

Population

POPULATION

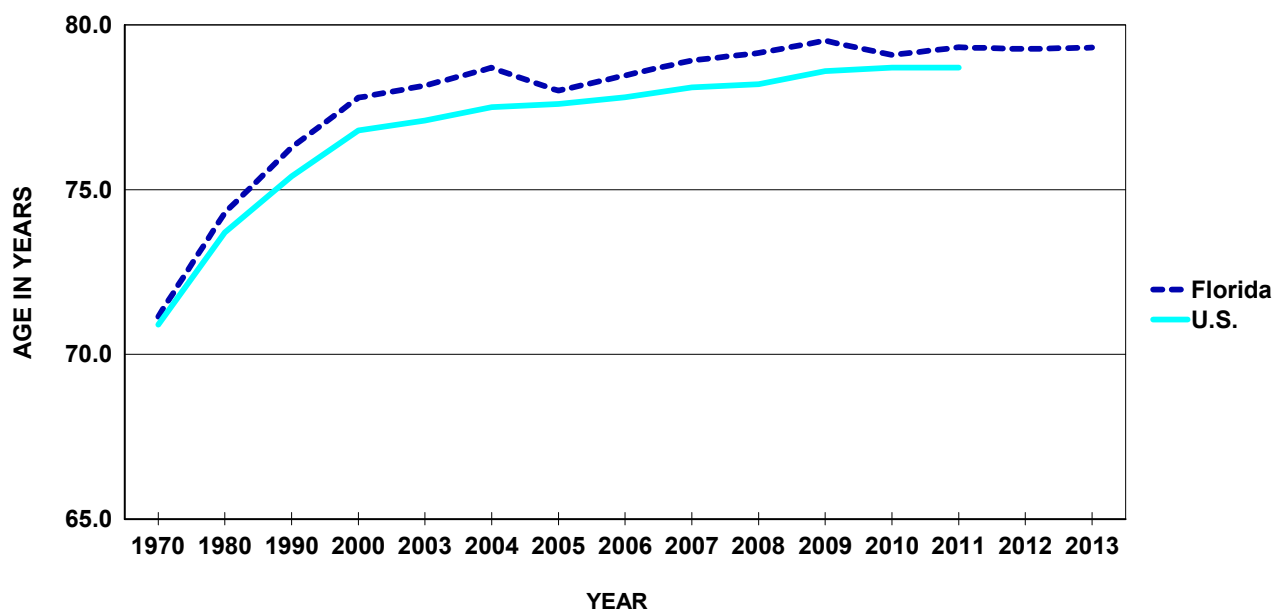
- In 2013, Florida's population reached 19,318,859 residents, a 1.5 percent increase from the 2012 population of 19,042,458.
- Since 1970, Florida's population has more than doubled. The population has risen by 48.3 percent since 1990 and 20.2 percent since 2000.
- In 2013, whites accounted for 78.3 percent of the population, and blacks accounted for 16.6 percent of the population. Additionally, Hispanics accounted for 23.5 percent of the population.
- A Florida Resident born in 2013 can expected to live 79.3 years. Since 1970, life expectancy at birth has increased by 8.2 years from 71.1 years.
- Compared to 2012, life expectancy increased for black males and remained constant for black females. White male's life expectancy increased and life expectancy for white females did not change. Hispanic males and Hispanic females life expectancy increased in 2013.
- Women of all races and ethnicities are expected to live longer than men.
- The age distribution of Florida's population in 2013 is older than in 1970.
 - Persons under 15 accounted for 17.3 percent of Florida's population in 2013 and 25.6 percent of Florida's population in 1970
 - Persons 65 and older accounted for 18.2 percent of Florida's population in 2013 and 14.6 percent of Florida's population in 1970
 - Persons 75 and older accounted for 8.3 percent of Florida's population in 2013 and 5.1 percent of Florida's population in 1970
 - Persons 85 and older accounted for 2.5 percent of Florida's population in 2013 and 0.8 percent of Florida's population in 1970

CHART P-1: YEARS OF LIFE EXPECTANCY AT BIRTH, BY RACE, ETHNICITY, AND GENDER, FOR FLORIDA RESIDENTS AND UNITED STATES TOTAL, CENSUS YEARS 1970-2000 AND 2003-2013

YEAR	FLORIDA							UNITED STATES			
	TOTAL	WHITE ¹		BLACK ¹		HISPANIC ²		TOTAL	WHITE ¹	BLACK ¹	HISPANIC ²
		MALE	FEMALE	MALE	FEMALE	MALE	FEMALE				
1970	71.1	68.5	77.0	59.1	68.7	NA	NA	70.9	71.1	NA	NA
1980	74.3	71.2	79.4	63.2	72.8	NA	NA	73.7	74.4	68.0	NA
1990	76.3	73.5	81.1	64.4	73.8	NA	NA	75.4	76.1	69.1	NA
2000	77.8	75.5	81.5	69.6	75.7	NA	NA	76.8	77.3	71.8	NA
2003	78.2	75.6	81.6	70.3	76.1	NA	NA	77.1	77.6	72.3	NA
2004	78.7	76.4	81.9	71.1	76.9	79.4	84.8	77.5	77.9	72.8	NA
2005	78.0	75.5	81.5	70.7	76.8	77.5	84.2	77.6	78.0	73.0	NA
2006	78.5	75.9	82.0	71.4	77.3	78.4	84.7	77.8	78.3	73.4	80.3
2007	78.9	76.4	82.4	71.7	78.2	78.6	85.4	78.1	78.5	73.8	80.7
2008	79.1	76.5	82.5	72.5	78.9	79.3	85.3	78.2	78.5	74.3	80.8
2009	79.5	76.9	82.8	73.1	79.1	79.7	86.0	78.6	78.8	74.7	81.1
2010	79.1	76.6	82.2	73.6	79.1	80.5	86.0	78.7	78.9	75.1	81.2
2011	79.3	76.9	82.4	74.1	79.7	80.7	86.1	78.7 ³	79.0 ³	75.3 ³	81.4 ³
2012	79.3	76.9	82.2	74.3	80.2	80.1	85.2	NA	NA	NA	NA
2013	79.3	77.0	82.2	74.5	80.2	80.5	85.3	NA	NA	NA	NA

1. Regardless of ethnicity.
 2. Regardless of race
 3. Preliminary data.

GRAPH P-1: YEARS OF LIFE EXPECTANCY AT BIRTH, FLORIDA AND UNITED STATES, CENSUS YEARS 1970-2000 AND 2003-2013



**CHART P-2: NATURAL INCREASE* IN POPULATION,
BY RACE, FLORIDA 2003-2013**

YEAR	TOTAL	WHITE	BLACK	OTHER
2003	43,784	7,879	29,197	6,477
2004	49,681	10,917	28,939	9,452
2005	55,919	16,079	29,953	9,552
2006	67,801	25,153	32,494	9,858
2007	71,412	27,292	33,308	10,396
2008	60,944	17,521	33,076	9,870
2009	51,537	9,996	32,220	8,714
2010	42,010	1,891	30,938	8,243
2011	40,381	171	30,470	9,210
2012	37,105	-3,177	30,121	9,578
2013	35,179	-3,948	29,305	9,029

*Resident Live Births minus Resident Deaths.

**GRAPH P-2: PERCENT DISTRIBUTION OF RACE-SPECIFIC POPULATION
BY AGE GROUPS, FLORIDA, 2013**

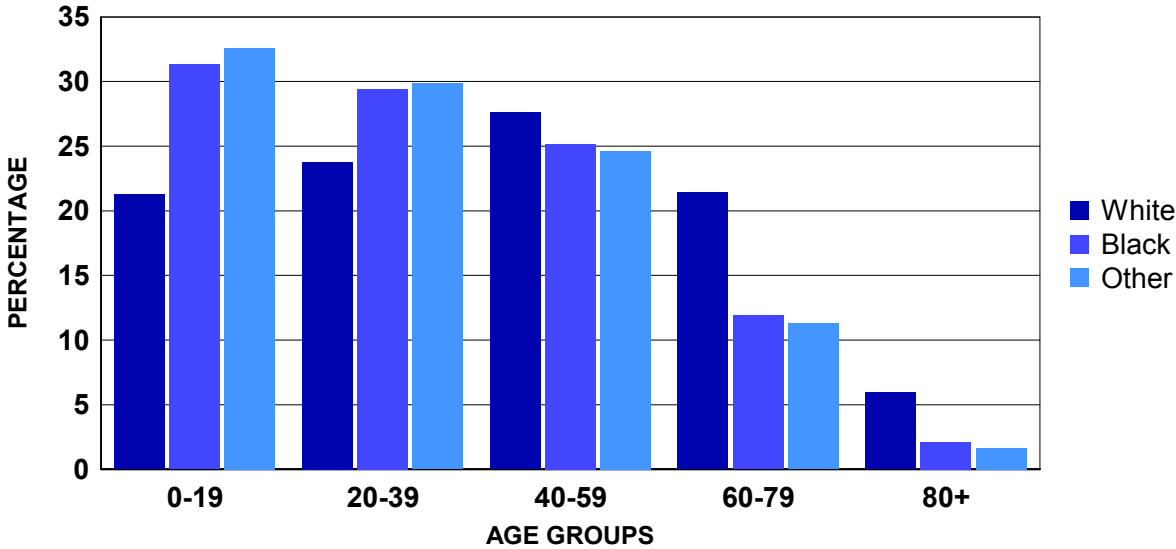


CHART P-3: RESIDENT MIDYEAR POPULATION ESTIMATES, BY AGE, RACE AND GENDER, FLORIDA, 2013

AGE GROUP	TOTAL	WHITE			BLACK			OTHER		
		TOTAL	MALE	FEMALE	TOTAL	MALE	FEMALE	TOTAL	MALE	FEMALE
TOTAL	19,318,859	15,122,965	7,425,559	7,697,406	3,212,321	1,547,688	1,664,633	983,573	471,324	512,249
<1 ¹	211,231	151,079	77,515	73,564	48,077	24,385	23,692	12,075	6,199	5,876
1-4 ²	880,025	607,996	310,124	297,872	198,195	101,271	96,924	73,834	37,535	36,299
5-9	1,112,712	782,561	400,014	382,547	247,298	125,493	121,805	82,853	41,609	41,244
10-14	1,140,733	811,183	415,564	395,619	250,782	126,868	123,914	78,768	39,332	39,436
15-19	1,200,272	864,577	443,339	421,238	262,670	132,746	129,924	73,025	36,848	36,177
20-24	1,282,463	934,303	481,216	453,087	271,127	136,456	134,671	77,033	38,943	38,090
25-29	1,228,214	911,704	468,022	443,682	242,810	119,419	123,391	73,700	36,219	37,481
30-34	1,175,127	879,835	446,424	433,411	222,861	106,933	115,928	72,431	34,463	37,968
35-39	1,150,395	870,828	439,474	431,354	209,028	98,787	110,241	70,539	33,295	37,244
40-44	1,212,172	937,080	470,075	467,005	207,934	98,415	109,519	67,158	31,137	36,021
45-49	1,308,461	1,036,307	517,828	518,479	209,837	99,822	110,015	62,317	29,007	33,310
50-54	1,388,739	1,120,716	552,339	568,377	208,423	98,346	110,077	59,600	27,242	32,358
55-59	1,314,334	1,078,520	519,901	558,619	182,663	84,755	97,908	53,151	23,966	29,185
60-64	1,201,087	1,013,816	478,994	534,822	143,978	65,815	78,163	43,293	19,274	24,019
65-69	1,059,170	921,206	432,602	488,604	106,450	47,665	58,785	31,514	14,078	17,436
70-74	841,320	742,399	346,444	395,955	77,082	33,363	43,719	21,839	9,801	12,038
75-79	627,605	558,755	256,289	302,466	54,543	22,895	31,648	14,307	6,167	8,140
80-84	506,063	459,540	202,269	257,271	37,208	14,241	22,967	9,315	3,755	5,560
85+	478,736	440,560	167,126	273,434	31,355	10,013	21,342	6,821	2,454	4,367

Source: The Florida Legislature, Office of Economic and Demographic Research, July 1 estimates or births and infant deaths from the Bureau of Vital Statistics.

1. The <1 age group is number of births minus infant deaths obtained when in-state births and infant deaths were finalized plus the number of out-of-state births minus infant deaths from the previous calendar year. When the estimate of individuals <1 in a county exceeds the 0-4 population estimate from the Office of Economic and Demographic Research for the county, then the county's total 0-4 population estimate is reallocated based on the proportion of individuals <1 in each race, ethnic, gender group in relation to the total number who are <1 in the county. A final adjustment may have been made to the <1 estimate to ensure that the sum of the <1, 1, 2, 3, and 4 age groups total to the county's 0-4 population estimate.

2. The 1-4 age group for each county is the Office of Economic and Demographic Research 0-4 age group estimate minus the <1 age group estimate described in the previous footnote. A final adjustment may have been made to the 1-4 estimate to ensure that the sum of the <1, 1, 2, 3, and 4 age groups total to the county's 0-4 population estimate.

**CHART P-4: RESIDENT MIDYEAR POPULATION ESTIMATES, BY RACE AND GENDER, FLORIDA,
CENSUS YEARS 1970-1990 AND 1994 - 2013**

YEAR	TOTAL	WHITE			BLACK			OTHER		
		TOTAL	MALE	FEMALE	TOTAL	MALE	FEMALE	TOTAL	MALE	FEMALE
1970	6,851,176	5,775,400	2,791,845	2,983,555	1,047,244	501,598	545,646	28,532	13,990	14,542
1980	9,840,317	8,389,968	4,031,868	4,358,100	1,366,808	649,110	717,698	83,541	39,070	44,471
1990	13,029,114	11,040,436	5,358,366	5,682,070	1,790,653	854,838	935,815	198,025	94,610	103,415
1994	14,120,555	11,791,929	5,741,676	6,050,253	2,062,457	990,398	1,072,059	266,169	126,402	139,767
1995	14,405,514	11,995,367	5,846,164	6,149,203	2,124,830	1,020,988	1,103,842	285,317	135,304	150,013
1996	14,701,293	12,205,330	5,957,258	6,248,072	2,191,834	1,053,895	1,137,939	304,129	144,321	159,808
1997	15,011,697	12,422,254	6,070,358	6,351,896	2,265,376	1,089,602	1,175,774	324,067	153,464	170,603
1998	15,309,968	12,633,341	6,177,496	6,455,845	2,334,494	1,122,859	1,211,635	342,133	162,015	180,118
1999	15,679,606	12,903,840	6,313,637	6,590,203	2,412,203	1,160,236	1,251,967	363,563	173,549	190,014
2000	16,074,896	13,200,518	6,461,066	6,739,452	2,487,562	1,196,463	1,291,099	386,816	186,108	200,708
2001	16,384,860	13,308,708	6,517,402	6,791,306	2,506,652	1,203,991	1,302,661	569,500	274,650	294,850
2002	16,718,033	13,530,669	6,628,652	6,902,017	2,577,689	1,238,065	1,339,624	609,675	294,751	314,924
2003	17,074,368	13,771,781	6,751,592	7,020,189	2,650,445	1,273,337	1,377,108	652,142	313,870	338,272
2004	17,476,489	14,047,501	6,893,166	7,154,335	2,732,636	1,312,932	1,419,704	696,352	334,256	362,096
2005	17,876,663	14,314,124	7,027,973	7,286,151	2,818,056	1,353,355	1,464,701	744,483	357,294	387,189
2006	18,237,596	14,539,520	7,142,191	7,397,329	2,904,545	1,395,616	1,508,929	793,531	381,434	412,097
2007	18,500,958	14,695,237	7,223,143	7,472,094	2,970,749	1,428,525	1,542,224	834,972	400,760	434,212
2008	18,636,837	14,747,636	7,244,354	7,503,282	3,019,761	1,452,221	1,567,540	869,440	416,260	453,180
2009	18,711,844	14,762,048	7,248,318	7,513,730	3,049,814	1,466,943	1,582,871	899,982	431,386	468,596
2010	18,820,278	14,815,082	7,276,743	7,538,339	3,083,154	1,483,295	1,599,859	922,042	442,190	479,852
2011	18,934,175	14,866,474	7,305,024	7,561,450	3,117,755	1,501,281	1,616,474	949,946	454,730	495,216
2012	19,042,458	14,930,936	7,331,419	7,599,517	3,150,349	1,517,653	1,632,696	961,173	460,322	500,851
2013	19,318,859	15,122,965	7,425,559	7,697,406	3,212,321	1,547,688	1,664,633	983,573	471,324	512,249

Source: The Florida Legislature, Office of Economic and Demographic Research

**CHART P-5: RESIDENT MIDYEAR POPULATION ESTIMATES, BY AGE GROUPS, FLORIDA,
CENSUS YEARS 1970-1990 AND 1994 - 2013**

YEAR	AGE GROUP											
	TOTAL	<1 ¹	1-4 ²	5-14	15-24	25-34	35-44	45-54	55-64	65-74	75-84	85+
1970	6,851,176	112,644	391,737	1,251,059	1,093,338	768,900	748,346	767,772	713,958	656,231	289,759	57,432
1980	9,840,317	129,893	448,565	1,310,351	1,630,632	1,438,555	1,051,361	994,915	1,131,187	1,067,585	517,689	119,584
1990	13,029,114	197,234	687,549	1,577,347	1,679,321	2,125,870	1,830,009	1,291,371	1,266,366	1,372,242	792,709	209,096
1994	14,120,555	189,006	758,595	1,823,222	1,688,009	2,129,987	2,098,672	1,570,953	1,266,249	1,451,927	881,634	262,301
1995	14,405,514	187,132	748,894	1,876,511	1,709,090	2,125,881	2,176,563	1,650,994	1,286,878	1,463,428	906,789	273,354
1996	14,701,293	187,933	738,827	1,925,408	1,736,529	2,118,987	2,251,266	1,733,377	1,314,581	1,470,070	939,150	285,165
1997	15,011,697	190,946	733,187	1,968,856	1,782,923	2,103,482	2,321,998	1,817,926	1,365,920	1,465,328	964,172	296,959
1998	15,309,968	194,149	729,556	2,009,851	1,833,426	2,078,343	2,382,246	1,893,110	1,438,765	1,456,934	984,061	309,527
1999	15,679,606	195,521	737,786	2,057,884	1,893,078	2,071,054	2,445,284	1,995,809	1,508,272	1,445,428	1,006,711	322,779
2000	16,074,896	202,607	752,066	2,094,766	1,961,818	2,086,402	2,488,959	2,090,243	1,579,582	1,455,587	1,029,871	332,995
2001	16,384,860	204,733	787,332	2,110,339	2,040,630	2,083,035	2,478,306	2,163,930	1,665,444	1,463,755	1,048,642	338,714
2002	16,718,033	204,486	781,008	2,120,022	2,086,329	2,071,620	2,490,536	2,267,322	1,758,361	1,489,751	1,085,544	363,054
2003	17,074,368	211,257	808,356	2,171,906	2,140,399	2,120,794	2,541,604	2,304,679	1,790,311	1,517,846	1,103,047	364,169
2004	17,476,489	220,922	840,464	2,223,491	2,291,411	2,114,627	2,515,128	2,419,314	1,925,093	1,433,804	1,071,348	420,887
2005	17,876,663	226,176	848,666	2,271,019	2,323,896	2,169,191	2,559,269	2,488,666	1,976,581	1,460,734	1,142,811	409,654
2006	18,237,596	236,579	857,820	2,296,310	2,366,202	2,221,896	2,544,341	2,551,058	2,067,667	1,513,436	1,149,747	432,540
2007	18,500,958	237,193	871,978	2,313,360	2,401,336	2,259,101	2,525,432	2,601,729	2,142,955	1,546,842	1,150,763	450,269
2008	18,636,837	230,660	905,284	2,306,432	2,410,214	2,272,113	2,481,650	2,627,769	2,198,837	1,565,961	1,148,391	489,526
2009	18,711,844	220,233	923,983	2,294,240	2,415,671	2,281,287	2,433,459	2,652,212	2,253,825	1,584,274	1,141,403	511,257
2010	18,820,278	224,098	834,824	2,202,794	2,437,270	2,272,695	2,421,253	2,744,741	2,368,230	1,760,445	1,114,335	439,593
2011	18,934,175	223,227	837,104	2,213,728	2,442,802	2,306,898	2,395,451	2,726,097	2,413,585	1,803,948	1,119,075	452,260
2012	19,042,458	209,035	868,895	2,226,029	2,459,267	2,352,723	2,367,106	2,693,194	2,447,516	1,837,950	1,118,494	462,249
2013	19,318,859	211,231	880,025	2,253,445	2,482,735	2,403,341	2,362,567	2,697,200	2,515,421	1,900,490	1,133,668	478,736

Source: The Florida Legislature, Office of Economic and Demographic Research, July 1 estimates or births and infant deaths from the Bureau of Vital Statistics.

1. The <1 age group is number of births minus infant deaths obtained when in-state births and infant deaths were finalized plus the number of out-of-state births minus infant deaths from the previous calendar year. When the estimate of individuals <1 in a county exceeds the 0-4 population estimate from the Office of Economic and Demographic Research for the county, then the county's total 0-4 population estimate is reallocated based on the proportion of individuals <1 in each race, ethnic, gender group in relation to the total number who are <1 in the county. A final adjustment may have been made to the <1 estimate to ensure that the sum of the <1, 1, 2, 3, and 4 age groups total to the county's 0-4 population estimate.

2. The 1-4 age group for each county is the Office of Economic and Demographic Research 0-4 age group estimate minus the <1 age group estimate described in the previous footnote. A final adjustment may have been made to the 1-4 estimate to ensure that the sum of the <1, 1, 2, 3, and 4 age groups total to the county's

TABLE P-1: RESIDENT MIDYEAR POPULATION ESTIMATES, BY RACE, ETHNICITY, AND COUNTY, FLORIDA, 2013

	TOTAL	RACE			ETHNICITY	
		WHITE	BLACK	OTHER	NON-HISPANIC	HISPANIC
FLORIDA	19,318,859	15,122,965	3,212,321	983,573	14,772,415	4,546,444
ALACHUA	247,989	175,927	50,706	21,356	225,627	22,362
BAKER	27,346	22,746	3,960	640	26,771	575
BAY	170,554	141,347	19,294	9,913	161,804	8,750
BRADFORD	26,717	20,581	5,532	604	25,760	957
BREVARD	549,006	461,581	58,770	28,655	501,229	47,777
BROWARD	1,785,823	1,177,101	500,447	108,275	1,310,969	474,854
CALHOUN	14,672	11,960	2,105	607	13,863	809
CHARLOTTE	165,732	150,239	10,283	5,210	155,377	10,355
CITRUS	141,896	132,672	4,441	4,783	135,084	6,812
CLAY	195,536	162,136	20,780	12,620	179,409	16,127
COLLIER	337,029	303,627	23,440	9,962	245,839	91,190
COLUMBIA	68,363	53,809	12,262	2,292	64,860	3,503
MIAMI-DADE	2,583,021	2,004,236	497,233	81,552	881,450	1,701,571
DESOTO	34,375	28,942	4,413	1,020	23,601	10,774
DIXIE	16,523	14,749	1,403	371	15,942	581
DUVAL	877,254	548,407	263,512	65,335	805,266	71,988
ESCAMBIA	299,769	208,200	70,535	21,034	283,764	16,005
FLAGLER	100,305	83,392	12,199	4,714	90,895	9,410
FRANKLIN	11,665	9,716	1,675	274	11,086	579
GADSDEN	46,894	20,017	25,742	1,135	41,975	4,919
GILCHRIST	17,062	15,753	937	372	16,124	938
GLADES	12,703	10,316	1,510	877	9,780	2,923
GULF	15,971	12,667	2,946	358	15,262	709
HAMILTON	14,933	9,566	4,952	415	13,505	1,428
HARDEE	27,848	24,749	2,082	1,017	15,592	12,256
HENDRY	37,819	30,909	5,236	1,674	18,536	19,283
HERNANDO	175,509	159,496	10,047	5,966	155,821	19,688
HIGHLANDS	99,699	85,895	10,066	3,738	81,374	18,325
HILLSBOROUGH	1,278,702	967,897	225,715	85,090	948,211	330,491
HOLMES	20,055	18,076	1,272	707	19,537	518
INDIAN RIVER	141,272	123,189	13,609	4,474	124,175	17,097
JACKSON	49,743	34,811	13,412	1,520	47,304	2,439
JEFFERSON	14,439	9,013	5,174	252	13,878	561
LAFAYETTE	8,692	7,280	1,288	124	7,630	1,062
LAKE	305,281	258,653	32,490	14,138	264,560	40,721
LEE	655,530	572,453	59,040	24,037	527,003	128,527
LEON	280,049	177,913	86,819	15,317	262,952	17,097
LEVY	40,487	35,325	3,982	1,180	37,210	3,277
LIBERTY	8,814	6,969	1,589	256	8,276	538
MADISON	19,178	11,340	7,444	394	18,199	979
MANATEE	335,798	291,007	31,580	13,211	282,498	53,300
MARION	337,975	281,723	43,870	12,382	299,041	38,934
MARTIN	148,639	134,571	8,562	5,506	129,201	19,438
MONROE	72,834	65,669	4,666	2,499	56,817	16,017
NASSAU	74,737	67,475	5,117	2,145	71,905	2,832
OKALOOSA	190,797	157,192	18,911	14,694	176,802	13,995
OKEECHOBEE	39,954	35,218	3,352	1,384	29,873	10,081
ORANGE	1,200,493	836,592	263,098	100,803	863,011	337,482
OSCEOLA	290,674	234,112	37,622	18,940	152,018	138,656
PALM BEACH	1,350,078	1,040,201	243,821	66,056	1,076,427	273,651
PASCO	476,411	428,465	25,123	22,823	416,610	59,801
PINELLAS	920,453	769,423	99,907	51,123	839,138	81,315
POLK	615,213	492,668	95,768	26,777	498,292	116,921
PUTNAM	72,775	58,508	12,138	2,129	65,892	6,883
SAINT JOHNS	202,067	181,450	12,044	8,573	190,282	11,785
SAINT LUCIE	285,502	216,824	56,178	12,500	235,927	49,575
SANTA ROSA	157,134	137,577	9,986	9,571	149,151	7,983
SARASOTA	387,624	356,085	19,464	12,075	354,161	33,463
SEMINOLE	432,577	351,118	52,092	29,367	353,288	79,289
SUMTER	104,597	92,680	9,772	2,145	98,065	6,532
SUWANNEE	44,210	37,466	5,411	1,333	39,921	4,289
TAYLOR	23,175	17,580	4,855	740	22,338	837
UNION	15,624	11,815	3,507	302	14,793	831
VOLUSIA	500,343	425,480	55,145	19,718	441,867	58,476
WAKULLA	31,048	25,497	4,601	950	29,919	1,129
WALTON	58,634	52,362	3,688	2,584	55,218	3,416
WASHINGTON	25,238	20,552	3,701	985	24,460	778