

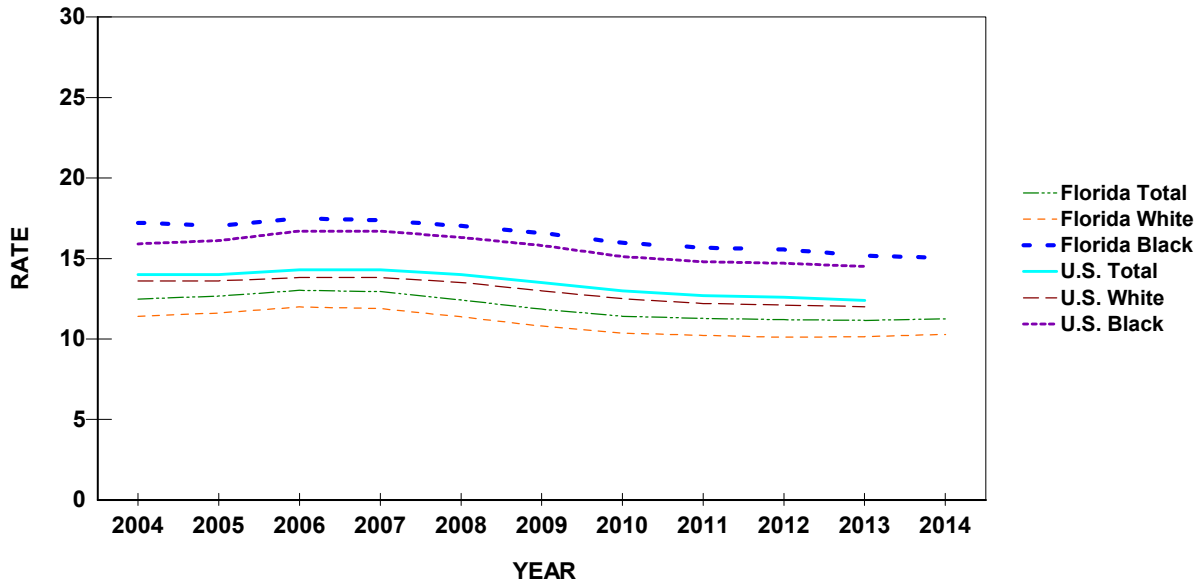
Live Births

**CHART B-1: RESIDENT LIVE BIRTHS AND RATES PER 1,000 POPULATION,
BY RACE*, FLORIDA AND UNITED STATES,
CENSUS YEARS 1970-2000 AND 2004-2014**

YEAR	NUMBER OF BIRTHS - FL				RATES - FL			RATES-U.S.		
	TOTAL	WHITE	BLACK	OTHER	TOTAL	WHITE	BLACK	TOTAL	WHITE	BLACK
1970	115,113	86,941	27,567	586	16.8	15.1	26.3	18.4	17.4	25.1
1980	131,810	97,401	33,127	1,259	13.4	11.6	24.2	15.9	15.1	21.3
1990	199,146	149,743	46,353	2,912	15.3	13.6	25.9	16.7	15.8	22.4
2000	204,030	150,115	47,271	6,351	12.7	11.4	19.0	14.4	13.9	17.0
2004	218,045	160,132	46,998	10,479	12.5	11.4	17.2	14.0	13.6	15.9
2005	226,219	166,181	47,957	11,651	12.7	11.6	17.0	14.0	13.6	16.1
2006	237,166	174,147	50,808	11,889	13.0	12.0	17.5	14.3	13.8	16.7
2007	239,120	174,597	51,587	12,503	12.9	11.9	17.4	14.3	13.8	16.7
2008	231,417	167,487	51,362	12,049	12.4	11.4	17.0	14.0	13.5	16.3
2009	221,391	159,186	50,559	11,006	11.8	10.8	16.6	13.5	13.0	15.8
2010	214,519	153,480	49,189	10,716	11.4	10.4	16.0	13.0	12.5	15.1
2011	213,237	152,007	48,838	11,623	11.3	10.2	15.7	12.7	12.2	14.8
2012	212,954	150,866	48,992	12,335	11.2	10.1	15.6	12.6	12.1	14.7
2013	215,194	153,278	48,737	12,213	11.1	10.1	15.2	12.4	12.0	14.5
2014	219,905	156,999	49,059	12,712	11.2	10.3	15.0	NA	NA	NA

*Data are based on the race of the mother.

**GRAPH B-1: RESIDENT LIVE BIRTH RATES PER 1,000 POPULATION, BY RACE OF
MOTHER, FLORIDA AND UNITED STATES, 2004-2014**



**CHART B-2: RESIDENT LIVE BIRTHS TO MOTHERS 18 YEARS AND UNDER,
BY SINGLE YEARS OF AGE, AND PERCENT OF TOTAL BIRTHS,
BY RACE OF MOTHER, FLORIDA, 1970, 1975, 1980, 1985, 1990, 1995, 2000, 2005, AND 2010-2014**

YEAR	AGE OF MOTHER							18 YEARS & UNDER	
	< 13	13	14	15	16	17	18	NUMBER	PERCENT
TOTAL									
1970	26	107	503	1,463	3,107	4,887	6,808	16,901	14.7
1975	20	145	647	1,798	3,369	4,936	6,482	17,397	16.5
1980	21	98	509	1,537	2,913	4,429	6,299	15,806	12.0
1985	16	105	549	1,407	2,709	4,348	6,139	15,273	9.3
1990	31	138	591	1,661	3,148	5,193	7,544	18,306	9.2
1995	20	128	588	1,583	3,236	5,166	6,971	17,692	9.4
2000	24	95	412	1,213	2,702	4,730	7,094	16,270	8.0
2005	15	59	341	1,036	2,428	4,126	6,797	14,802	6.5
2010	6	54	190	660	1,567	3,171	5,466	11,114	5.2
2011	2	34	158	552	1,422	2,749	4,840	9,757	4.6
2012	6	32	154	497	1,274	2,448	4,474	8,885	4.2
2013	5	27	132	448	1,074	2,176	3,798	7,660	3.6
2014	5	15	122	386	958	1,862	3,590	6,938	3.2
WHITE									
1970	3	19	155	524	1,553	3,004	4,463	9,721	11.2
1975	5	34	207	693	1,651	2,868	4,078	9,536	12.2
1980	5	24	128	581	1,370	2,434	3,887	8,429	8.7
1985	4	26	168	600	1,439	2,537	3,744	8,518	6.9
1990	8	37	201	693	1,571	2,976	4,636	10,122	6.8
1995	9	32	230	801	1,801	3,124	4,451	10,448	7.4
2000	6	43	167	625	1,512	2,863	4,463	9,679	6.4
2005	7	26	161	567	1,468	2,643	4,452	9,324	5.6
2010	4	24	103	346	915	1,930	3,363	6,685	4.4
2011	2	15	84	295	835	1,597	2,970	5,798	3.8
2012	3	14	78	261	763	1,516	2,815	5,450	3.6
2013	2	9	64	247	641	1,379	2,372	4,714	3.1
2014	3	7	67	210	593	1,192	2,304	4,376	2.8
BLACK									
1970	22	88	348	939	1,552	1,873	2,331	7,153	25.9
1975	15	111	439	1,101	1,711	2,057	2,387	7,821	29.4
1980	16	74	379	954	1,533	1,986	2,389	7,331	22.1
1985	12	78	379	799	1,259	1,796	2,368	6,691	17.3
1990	22	101	387	953	1,552	2,166	2,847	8,028	17.3
1995	10	96	353	761	1,399	1,973	2,446	7,038	16.7
2000	18	50	238	576	1,148	1,798	2,525	6,353	13.4
2005	8	33	169	426	884	1,354	2,121	4,995	10.4
2010	2	27	81	282	597	1,144	1,910	4,043	8.2
2011	0	17	65	233	530	1,046	1,703	3,594	7.4
2012	3	17	73	218	452	835	1,485	3,083	6.3
2013	2	15	67	181	397	685	1,267	2,614	5.4
2014	2	7	51	153	318	582	1,133	2,246	4.6
OTHER									
1970	1	0	0	0	2	9	14	26	4.4
1975	0	0	0	3	6	11	16	36	3.9
1980	0	0	1	2	10	8	23	44	3.5
1985	0	1	2	8	10	15	26	62	3.5
1990	1	0	3	14	22	46	58	144	4.9
1995	1	0	5	21	32	65	73	197	4.4
2000	0	2	6	12	37	64	103	224	3.5
2005	0	0	11	40	74	125	211	461	4.0
2010	0	3	4	26	48	76	169	326	3.0
2011	0	2	7	21	52	99	151	332	2.9
2012	0	1	3	15	54	91	155	319	2.6
2013	1	3	1	19	32	101	138	295	2.4
2014	0	1	4	18	44	71	132	270	2.1

**CHART B-3: PERCENT OF RESIDENT LIVE BIRTHS FOR SELECTED BIRTHWEIGHT GROUPS, CENSUS YEARS
1970-2000 AND 2004-2014**

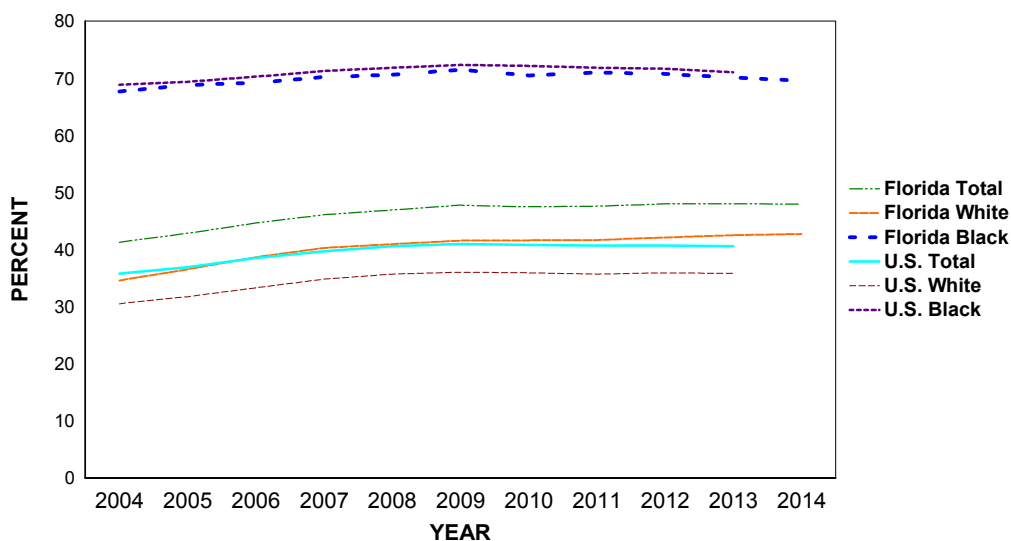
YE/	VERY LOW BIRTHWEIGHT: LESS THAN 1,500 GRAMS								LOW BIRTHWEIGHT: LESS THAN 2,500 GRAMS							
	TOTAL	WHITE		BLACK		OTHER		TOTAL	WHITE		BLACK		OTHER			
		MALE	FEMALE	MALE	FEMALE	MALE	FEMALE		MALE	FEMALE	MALE	FEMALE	MALE	FEMALE		
1970	1.3	0.9	0.9	2.4	2.4	8.5	10.4	8.5	6.4	7.5	12.0	14.6	1.6	1.8		
1980	1.4	1.0	0.9	2.6	2.6	3.8	5.9	7.6	5.6	6.5	11.6	13.1	0.6	0.7		
1990	1.5	1.0	1.0	2.8	2.9	7.3	7.2	7.4	5.5	6.3	11.5	13.4	0.9	1.1		
2000	1.5	1.2	1.1	2.8	2.9	7.4	8.8	8.0	6.2	7.0	11.4	13.3	1.2	1.1		
2004	1.6	1.1	1.2	3.0	3.2	8.0	9.7	8.6	6.6	7.9	11.9	14.3	1.3	1.4		
2005	1.6	1.2	1.2	3.0	3.2	7.9	9.7	8.8	6.7	8.0	12.2	15.0	1.3	1.5		
2006	1.6	1.2	1.2	3.0	3.2	7.7	9.6	8.7	6.8	8.0	11.9	15.0	1.2	1.3		
2007	1.6	1.2	1.2	3.0	3.3	7.2	9.2	8.7	6.7	7.8	12.4	15.0	1.3	1.5		
2008	1.7	1.2	1.3	2.9	3.1	8.0	9.0	8.8	6.8	8.0	12.3	14.8	1.3	1.6		
2009	1.6	1.1	1.2	2.9	3.3	8.1	9.8	8.7	6.6	7.8	12.0	14.9	1.2	1.3		
2010	1.6	1.3	1.2	2.8	3.2	8.2	9.6	8.7	6.6	7.7	12.5	14.9	1.4	1.2		
2011	1.6	1.1	1.2	2.9	3.1	8.6	8.3	8.7	6.6	8.1	12.2	14.1	1.5	1.1		
2012	1.6	1.2	1.2	2.8	2.9	7.7	9.0	8.6	6.8	7.7	11.7	14.0	1.2	1.3		
2013	1.5	1.1	1.1	2.7	3.0	8.1	8.9	8.5	6.6	7.8	11.7	14.1	1.4	1.3		
2014	1.6	1.2	1.2	3.0	2.9	7.6	9.1	8.7	6.6	7.9	12.3	14.5	1.5	1.3		

**CHART B-4: RESIDENT LIVE BIRTHS TO UNWED MOTHERS
AND PERCENT OF TOTAL LIVE BIRTHS, BY RACE*,
FLORIDA AND UNITED STATES, CENSUS YEARS 1920-2000 AND 2004-2014**

YEAR	NUMBER OF BIRTHS ¹				PERCENT - FL				PERCENT-U.S.		
	TOTAL	WHITE	BLACK	OTHER	TOTAL	WHITE	BLACK	OTHER	TOTAL	WHITE	BLACK
1970	17,264	5,679	11,554	27	15.0	6.5	41.9	4.6	10.7	5.7	37.6
1980	30,156	10,295	19,778	82	22.9	10.6	59.7	6.5	18.4	11.0	55.2
1990	63,126	31,276	31,360	442	31.7	20.9	67.7	15.2	28.0	20.4	66.5
2000	78,026	44,616	31,934	1,400	38.2	29.7	67.6	22.0	33.2	27.1	68.5
2004	89,976	55,381	31,799	2,670	41.3	34.6	67.7	25.5	35.8	30.5	68.8
2005	96,895	60,665	32,972	3,129	42.8	36.5	68.8	26.9	36.9	31.7	69.3
2006	105,770	67,305	35,133	3,208	44.6	38.6	69.1	27.0	38.5	33.3	70.2
2007	110,160	70,251	36,197	3,501	46.1	40.2	70.2	28.0	39.7	34.8	71.2
2008	108,484	68,583	36,227	3,412	46.9	40.9	70.5	28.3	40.6	35.7	71.8
2009	105,654	66,080	36,133	3,133	47.7	41.5	71.5	28.5	41.0	36.0	72.3
2010	101,810	63,796	34,658	2,867	47.5	41.6	70.5	26.8	40.8	35.9	72.1
2011	101,466	63,266	34,657	3,230	47.6	41.6	71.0	27.8	40.7	35.7	71.8
2012	102,135	63,507	34,654	3,665	48.0	42.1	70.7	29.7	40.7	35.9	71.6
2013	103,303	65,151	34,150	3,599	48.0	42.5	70.1	29.5	40.6	35.8	71.0
2014	105,278	67,010	34,128	3,677	47.9	42.7	69.6	28.9	NA	NA	NA

*Data are based on the race of the mother.

**GRAPH B-2: PERCENT OF RESIDENT LIVE BIRTHS TO UNWED MOTHERS,
BY RACE OF MOTHER, FLORIDA AND UNITED STATES, 2004-2014**



**CHART B-5: RESIDENT LIVE BIRTHS TO UNWED MOTHERS AND PERCENT
BY AGE AND RACE OF MOTHER, FLORIDA, 2004 AND 2014**

	WHITE				BLACK				OTHER			
	2004		2014		2004		2014		2004		2014	
	NUMBER	%	NUMBER	%	NUMBER	%	NUMBER	%	NUMBER	%	NUMBER	%
TOTAL	55,381	34.6	67,010	42.7	31,799	67.7	34,128	69.6	2,670	25.5	3,677	28.9
10-14	162	97.0	75	97.4	227	100.0	60	100.0	9	90.0	5	100.0
15	536	95.0	208	99.0	417	99.8	153	100.0	30	100.0	18	100.0
16	1,193	87.6	567	95.6	866	99.4	318	100.0	75	94.9	41	93.2
17	2,236	85.6	1,133	95.1	1,338	98.5	580	99.7	114	85.7	65	91.5
18	3,482	80.9	2,051	89.0	2,109	97.0	1,115	98.4	152	88.9	123	93.2
19	4,537	74.3	3,251	83.6	2,767	94.1	1,824	97.3	175	72.3	199	84.0
20-24	21,002	53.7	22,469	67.8	12,471	81.7	12,835	88.4	918	47.6	1,164	60.3
25-29	11,670	27.7	18,903	40.6	6,501	58.5	9,386	68.9	590	20.1	973	27.6
30-34	6,429	16.6	11,420	26.5	3,287	43.0	5,077	50.3	387	12.2	670	16.4
35-44	4,082	16.5	6,826	26.8	1,787	36.4	2,750	41.7	218	12.4	412	15.7
45+	49	19.4	97	29.0	27	40.3	29	30.9	2	15.4	7	19.4
UNK	3	27.3	10	34.5	2	50.0	1	50.0	0	0.0	0	0.0

% = Percent

TABLE B-1: RESIDENT AND RECORDED LIVE BIRTHS AND BIRTH RATES PER 1,000 POPULATION, BY RACE OF MOTHER, BY COUNTY, FLORIDA, 2014

RESIDENT LIVE BIRTHS

	NUMBERS					RATES		
	TOTAL	WHITE	BLACK	OTHER	UNK	TOTAL	WHITE	BLACK
FLORIDA	219,905	156,999	49,059	12,712	1,135	11.2	10.3	15.0
ALACHUA	2,916	1,730	889	293	4	11.6	9.7	17.4
BAKER	365	318	35	12	0	13.4	14.0	9.0
BAY	2,328	1,777	329	176	46	13.6	12.5	16.8
BRADFORD	282	226	52	4	0	10.3	10.6	9.4
BREVARD	5,259	4,111	792	349	7	9.5	8.8	13.1
BROWARD	22,213	11,947	8,498	1,673	95	12.4	10.1	16.8
CALHOUN	131	117	13	1	0	8.9	9.7	6.2
CHARLOTTE	1,007	889	81	37	0	6.1	6.0	7.8
CITRUS	1,016	948	37	30	1	7.1	7.2	8.0
CLAY	2,083	1,741	208	123	11	10.6	10.7	9.7
COLLIER	3,288	2,749	382	155	2	9.7	9.0	15.9
COLUMBIA	832	653	156	23	0	12.2	12.2	12.6
MIAMI-DADE	31,990	23,765	7,059	831	335	12.2	11.7	14.2
DESOTO	384	334	41	8	1	11.1	11.5	9.2
DIXIE	169	158	9	2	0	10.3	10.7	6.7
DUVAL	12,514	6,992	4,387	1,111	24	14.1	12.7	16.4
ESCAMBIA	3,880	2,461	1,183	235	1	12.8	11.7	16.6
FLAGLER	833	661	112	56	4	8.2	7.9	8.9
FRANKLIN	100	90	10	0	0	8.6	9.2	6.2
GADSDEN	535	197	331	7	0	11.1	9.5	12.7
GILCHRIST	167	154	10	3	0	9.8	9.8	10.9
GLADES	60	46	10	4	0	4.7	4.4	6.6
GULF	117	97	13	7	0	7.2	7.5	4.4
HAMILTON	145	97	47	1	0	10.0	10.3	10.0
HARDEE	414	385	20	9	0	15.0	15.6	9.8
HENDRY	569	490	61	18	0	15.0	15.7	12.1
HERNANDO	1,488	1,290	116	78	4	8.4	8.1	10.7
HIGHLANDS	937	745	152	37	3	9.4	8.7	14.9
HILLSBOROUGH	16,846	12,268	3,497	1,058	23	12.9	12.4	15.2
HOLMES	207	195	4	8	0	10.3	10.8	3.1
INDIAN RIVER	1,282	790	230	39	223	9.0	6.4	16.6
JACKSON	514	348	150	15	1	10.2	9.9	11.1
JEFFERSON	127	62	63	2	0	8.7	6.8	12.1
LAFAYETTE	76	71	5	0	0	8.7	9.7	3.9
LAKE	3,166	2,550	422	192	2	10.2	9.7	12.5
LEE	6,352	5,194	950	190	18	9.6	9.0	15.8
LEON	3,085	1,616	1,284	185	0	11.0	9.1	14.5
LEVY	409	355	43	10	1	10.0	9.9	10.9
LIBERTY	92	84	7	1	0	10.7	12.3	4.5
MADISON	191	104	86	1	0	9.8	9.0	11.4
MANATEE	3,545	2,773	455	301	16	10.4	9.4	14.1
MARION	3,417	2,646	633	137	1	10.0	9.3	14.1
MARTIN	1,263	1,098	108	51	6	8.4	8.1	12.3
MONROE	749	618	88	43	0	10.2	9.3	18.6
NASSAU	745	681	42	20	2	9.8	9.9	8.1
OKALOOSA	2,827	2,301	325	192	9	14.9	14.7	17.3
OKEECHOBEE	553	479	30	27	17	13.8	13.6	8.9
ORANGE	16,221	10,407	4,399	1,404	11	13.1	12.2	16.1
OSCEOLA	4,195	3,451	466	270	8	14.0	14.3	11.9
PALM BEACH	14,433	9,369	4,187	855	22	10.6	8.9	17.0
PASCO	4,826	4,268	314	221	23	10.0	9.8	11.9
PINELLAS	8,519	6,209	1,483	678	149	9.2	8.0	14.5
POLK	7,608	5,806	1,495	302	5	12.1	11.6	15.3
PUTNAM	831	623	178	30	0	11.4	10.7	14.8
SAINT JOHNS	2,148	1,856	161	128	3	10.3	9.9	12.8
SAINT LUCIE	2,969	1,978	810	156	25	10.3	9.1	14.2
SANTA ROSA	1,822	1,625	89	105	3	11.4	11.5	8.9
SARASOTA	2,955	2,564	239	138	14	7.6	7.1	12.5
SEMINOLE	4,515	3,451	694	364	6	10.4	9.8	13.1
SUMTER	494	395	82	15	2	4.5	4.0	8.2
SUWANNEE	440	363	63	14	0	9.9	9.7	11.6
TAYLOR	217	169	45	3	0	9.4	9.6	9.4
UNION	154	131	21	2	0	9.8	11.0	5.8
VOLUSIA	4,767	3,744	780	239	4	9.5	8.8	14.0
WAKULLA	335	299	33	3	0	10.7	11.7	6.8
WALTON	725	673	30	21	1	12.2	12.8	7.8
WASHINGTON	243	203	30	8	2	9.7	10.0	8.3

TABLE B-1 (Cont.): RESIDENT AND RECORDED LIVE BIRTHS AND BIRTH RATES PER 1,000 POPULATION, BY RACE OF MOTHER, BY COUNTY, FLORIDA, 2014

	RECORDED LIVE BIRTHS					RATES		
	NUMBERS					TOTAL	WHITE	BLACK
	TOTAL	WHITE	BLACK	OTHER	UNK			
FLORIDA	220,143	157,140	49,115	12,756	1,132	11.3	10.3	15.0
ALACHUA	5,623	3,982	1,272	365	4	22.4	22.4	24.8
BAKER	2	1	1	0	0	0.1	0.0	0.3
BAY	2,779	2,165	367	194	53	16.2	15.2	18.7
BRADFORD	2	2	0	0	0	0.1	0.1	0.0
BREVARD	5,129	4,033	743	347	6	9.3	8.7	12.3
BROWARD	23,798	12,801	9,331	1,567	99	13.2	10.8	18.4
CALHOUN	1	1	0	0	0	0.1	0.1	0.0
CHARLOTTE	1,317	1,162	98	56	1	8.0	7.8	9.4
CITRUS	852	791	33	27	1	6.0	6.0	7.1
CLAY	2,201	1,686	371	127	17	11.2	10.4	17.3
COLLIER	3,525	2,978	380	166	1	10.4	9.7	15.8
COLUMBIA	986	755	217	14	0	14.5	14.1	17.6
MIAMI-DADE	29,211	22,252	5,876	751	332	11.2	10.9	11.8
DESOTO	294	264	23	7	0	8.5	9.1	5.2
DIXIE	1	1	0	0	0	0.1	0.1	0.0
DUVAL	14,147	8,624	4,302	1,195	26	16.0	15.6	16.1
ESCAMBIA	5,549	3,959	1,284	305	1	18.3	18.9	18.0
FLAGLER	11	9	2	0	0	0.1	0.1	0.2
FRANKLIN	2	1	1	0	0	0.2	0.1	0.6
GADSDEN	3	2	1	0	0	0.1	0.1	0.0
GILCHRIST	3	3	0	0	0	0.2	0.2	0.0
GLADES	0	0	0	0	0	0.0	0.0	0.0
GULF	0	0	0	0	0	0.0	0.0	0.0
HAMILTON	0	0	0	0	0	0.0	0.0	0.0
HARDEE	1	1	0	0	0	0.0	0.0	0.0
HENDRY	4	2	2	0	0	0.1	0.1	0.4
HERNANDO	1,680	1,494	109	74	3	9.5	9.3	10.0
HIGHLANDS	1,305	1,084	167	51	3	13.0	12.6	16.4
HILLSBOROUGH	19,385	14,388	3,842	1,142	13	14.9	14.6	16.7
HOLMES	1	1	0	0	0	0.0	0.1	0.0
INDIAN RIVER	1,106	637	202	37	230	7.8	5.2	14.6
JACKSON	455	307	129	19	0	9.0	8.7	9.5
JEFFERSON	1	1	0	0	0	0.1	0.1	0.0
LAFAYETTE	0	0	0	0	0	0.0	0.0	0.0
LAKE	2,654	2,095	396	159	4	8.5	8.0	11.8
LEE	6,487	5,324	949	197	17	9.8	9.3	15.8
LEON	4,693	2,612	1,876	204	1	16.7	14.8	21.2
LEVY	5	4	0	1	0	0.1	0.1	0.0
LIBERTY	0	0	0	0	0	0.0	0.0	0.0
MADISON	2	0	2	0	0	0.1	0.0	0.3
MANATEE	2,724	2,083	348	289	4	8.0	7.1	10.8
MARION	2,585	1,987	486	112	0	7.6	7.0	10.8
MARTIN	994	853	92	46	3	6.6	6.3	10.5
MONROE	533	422	75	36	0	7.2	6.4	15.8
NASSAU	571	492	58	21	0	7.5	7.1	11.2
OKALOOSA	2,387	1,892	280	205	10	12.6	12.1	14.9
OKEECHOBEE	9	8	1	0	0	0.2	0.2	0.3
ORANGE	20,904	14,295	4,915	1,681	13	16.9	16.7	18.0
OSCEOLA	4,258	3,476	465	312	5	14.2	14.5	11.8
PALM BEACH	16,900	11,076	4,723	1,084	17	12.4	10.5	19.2
PASCO	1,987	1,743	143	83	18	4.1	4.0	5.4
PINELLAS	9,842	7,367	1,559	745	171	10.6	9.5	15.2
POLK	5,859	4,438	1,164	255	2	9.4	8.9	11.9
PUTNAM	394	267	108	19	0	5.4	4.6	9.0
SAINT JOHNS	1,476	1,202	192	81	1	7.1	6.4	15.2
SAINT LUCIE	3,140	2,167	783	151	39	10.9	9.9	13.7
SANTA ROSA	368	319	25	22	2	2.3	2.3	2.5
SARASOTA	3,410	2,918	340	132	20	8.7	8.1	17.8
SEMINOLE	3,226	2,377	602	241	6	7.4	6.7	11.4
SUMTER	4	4	0	0	0	0.0	0.0	0.0
SUWANNEE	6	5	1	0	0	0.1	0.1	0.2
TAYLOR	3	1	2	0	0	0.1	0.1	0.4
UNION	0	0	0	0	0	0.0	0.0	0.0
VOLUSIA	4,176	3,234	727	207	8	8.3	7.6	13.1
WAKULLA	3	3	0	0	0	0.1	0.1	0.0
WALTON	1,167	1,088	50	29	0	19.7	20.6	13.0
WASHINGTON	0	0	0	0	0	0.0	0.0	0.0

TABLE B-2: RESIDENT LIVE BIRTHS AND BIRTH RATES PER 1,000 POPULATION BY HISPANIC OR HAITIAN ORIGIN OF MOTHER, BY COUNTY, FLORIDA, 2014

	NUMBERS									RATE
	HISPANIC ORIGIN									
	TOTAL	TOTAL HISPANIC	MEXICAN	PUERTO RICAN	CUBAN	OTHER/ UNK HISPANIC	HAITIAN	NON-HISPANIC/ HAITIAN	UNK	
FLORIDA	219,905	61,784	12,071	12,527	13,143	24,043	8,282	149,103	736	13.2
ALACHUA	2,916	228	58	60	31	79	6	2,672	10	9.8
BAKER	365	2	0	1	0	1	0	363	0	3.2
BAY	2,328	169	67	44	19	39	3	2,152	4	17.6
BRADFORD	282	5	2	2	0	1	0	276	1	5.1
BREVARD	5,259	568	96	258	43	171	39	4,646	6	11.2
BROWARD	22,213	6,578	520	982	976	4,100	2,407	13,156	72	14.0
CALHOUN	131	3	3	0	0	0	0	128	0	3.5
CHARLOTTE	1,007	92	21	31	17	23	20	895	0	8.6
CITRUS	1,016	69	19	28	12	10	1	946	0	9.6
CLAY	2,083	196	59	70	14	53	9	1,869	9	11.5
COLLIER	3,288	1,503	721	92	252	438	278	1,507	0	15.9
COLUMBIA	832	50	25	9	6	10	0	777	5	13.7
MIAMI-DADE	31,990	20,208	799	1,026	8,759	9,624	1,764	9,765	253	11.6
DESOTO	384	143	126	4	3	10	1	239	1	13.0
DIXIE	169	7	5	0	1	1	0	161	1	11.1
DUVAL	12,514	1,285	329	399	107	450	108	11,100	21	17.2
ESCAMBIA	3,880	198	98	34	10	56	4	3,670	8	12.0
FLAGLER	833	85	9	40	11	25	2	743	3	8.3
FRANKLIN	100	3	2	1	0	0	0	97	0	5.4
GADSDEN	535	89	67	1	1	20	2	444	0	17.3
GILCHRIST	167	13	4	1	0	8	0	154	0	12.7
GLADES	60	20	14	3	0	3	0	40	0	6.5
GULF	117	2	0	0	0	2	0	114	1	2.6
HAMILTON	145	27	22	1	1	3	0	118	0	18.6
HARDEE	414	235	225	3	0	7	1	178	0	19.1
HENDRY	569	331	235	30	23	43	0	238	0	16.6
HERNANDO	1,488	182	34	101	25	22	2	1,301	3	8.9
HIGHLANDS	937	262	138	83	19	22	5	670	0	13.7
HILLSBOROUGH	16,846	4,960	1,560	1,498	830	1,072	160	11,708	18	14.5
HOLMES	207	2	1	0	0	1	0	205	0	3.7
INDIAN RIVER	1,282	267	186	18	19	44	21	994	0	15.1
JACKSON	514	26	18	3	3	2	0	488	0	10.5
JEFFERSON	127	9	4	2	2	1	0	117	1	13.3
LAFAYETTE	76	8	6	1	0	1	0	68	0	7.2
LAKE	3,166	614	224	221	32	137	19	2,528	5	14.2
LEE	6,352	1,955	661	416	294	584	233	4,156	8	14.6
LEON	3,085	156	47	24	17	68	17	2,911	1	8.9
LEVY	409	43	19	9	6	9	0	364	2	12.0
LIBERTY	92	7	6	0	0	1	0	85	0	13.0
MADISON	191	4	0	1	1	2	0	187	0	3.9
MANATEE	3,545	1,023	648	105	35	235	45	2,461	16	18.1
MARION	3,417	546	164	228	30	124	6	2,857	8	13.2
MARTIN	1,263	395	117	39	11	228	16	848	4	18.9
MONROE	749	237	34	11	113	79	50	462	0	14.6
NASSAU	745	32	14	7	1	10	1	711	1	10.1
OKALOOSA	2,827	296	126	50	7	113	0	2,530	1	20.9
OKEECHOBEE	553	184	151	10	2	21	2	365	2	17.8
ORANGE	16,221	4,964	694	2,351	275	1,644	894	10,340	23	14.0
OSCEOLA	4,195	2,252	129	1,418	77	628	69	1,866	8	15.5
PALM BEACH	14,433	4,205	858	548	553	2,246	1,688	8,494	46	14.8
PASCO	4,826	748	201	304	71	172	6	4,063	9	11.8
PINELLAS	8,519	1,077	440	297	103	237	19	7,302	121	12.8
POLK	7,608	1,925	998	572	90	265	145	5,527	11	15.2
PUTNAM	831	108	78	22	3	5	0	723	0	14.8
SAINT JOHNS	2,148	109	19	45	8	37	3	2,035	1	8.4
SAINT LUCIE	2,969	676	261	147	52	216	168	2,122	3	13.3
SANTA ROSA	1,822	100	53	21	4	22	1	1,718	3	11.2
SARASOTA	2,955	375	182	43	34	116	18	2,536	26	10.6
SEMINOLE	4,515	974	89	465	83	337	34	3,499	8	12.0
SUMTER	494	68	44	12	7	5	0	424	2	10.0
SUWANNEE	440	52	34	2	10	6	0	388	0	11.0
TAYLOR	217	3	1	0	2	0	1	213	0	3.4
UNION	154	7	6	1	0	0	0	147	0	8.2
VOLUSIA	4,767	724	240	322	35	127	14	4,022	7	12.0
WAKULLA	335	8	3	2	3	0	0	326	1	6.3
WALTON	725	82	54	6	0	22	0	642	1	23.1
WASHINGTON	243	7	3	2	0	2	0	235	1	9.5

**TABLE B-3: RESIDENT LIVE BIRTHS FOR INCORPORATED CITIES OF 2,400 OR MORE POPULATION,
BY RACE OF MOTHER, BY COUNTY, FLORIDA, 2014**

	TOTAL	WHITE	BLACK	AMER INDIAN	CHINESE	JAPANESE	HAWAIIAN	FILIPINO	OTHER ASIAN/ PAC ISL	MULTI - RACE & OTHER	UNK
FLORIDA	219,626	156,810	48,988	280	995	174	26	1,157	4,280	5,781	1,135
ALACHUA	2,916	1,730	889	3	76	5	1	22	94	92	4
ALACHUA	111	73	33	0	0	0	1	0	1	3	0
GAINESVILLE	1,977	989	731	2	70	4	0	20	87	72	2
HIGH SPRINGS	61	48	12	0	0	0	0	0	0	1	0
NEWBERRY	108	93	9	0	1	1	0	0	1	3	0
BALANCE OF COUNTY	659	527	104	1	5	0	0	2	5	13	2
BAKER	365	318	35	2	0	0	0	0	0	10	0
MACCLENNY	89	79	8	0	0	0	0	0	0	2	0
BALANCE OF COUNTY	276	239	27	2	0	0	0	0	0	8	0
BAY	2,328	1,777	329	16	6	4	0	20	30	100	46
CALLAWAY	33	25	6	0	0	0	0	0	0	1	1
LYNN HAVEN	224	187	20	0	1	0	0	1	4	8	3
PANAMA CITY	1,229	836	267	10	2	2	0	12	17	56	27
PANAMA CITY BEACH	368	309	14	2	1	1	0	2	6	23	10
PARKER	7	6	1	0	0	0	0	0	0	0	0
SPRINGFIELD	5	4	1	0	0	0	0	0	0	0	0
BALANCE OF COUNTY	462	410	20	4	2	1	0	5	3	12	5
BRADFORD	282	226	52	0	0	0	0	0	2	2	0
STARKE	104	68	33	0	0	0	0	0	2	1	0
BALANCE OF COUNTY	178	158	19	0	0	0	0	0	0	1	0
BREVARD	5,258	4,111	791	7	26	6	1	36	76	197	7
CAPE CANAVERAL	48	43	2	0	0	0	0	0	1	2	0
COCOA	496	331	127	1	0	0	0	4	8	21	4
COCOA BEACH	47	42	2	0	0	0	0	1	0	2	0
INDIALANTIC	94	89	1	0	2	0	0	1	0	1	0
INDIAN HARBOUR BEACH	66	63	0	0	0	0	0	0	1	2	0
MALABAR	16	13	2	0	0	0	0	0	1	0	0
MELBOURNE	1,152	901	143	1	9	2	0	8	22	66	0
MELBOURNE BEACH	34	32	0	0	0	0	0	0	0	2	0
PALM BAY	1,236	930	235	2	5	1	0	12	12	38	1
ROCKLEDGE	347	262	63	1	1	0	0	4	6	9	1
SATELLITE BEACH	118	112	0	0	0	0	0	3	1	2	0
TITUSVILLE	558	419	114	1	2	0	1	1	5	15	0
WEST MELBOURNE	208	168	12	1	3	0	0	0	8	16	0
BALANCE OF COUNTY	838	706	90	0	4	3	0	2	11	21	1
BROWARD	22,213	11,947	8,498	26	153	23	1	85	784	601	95
COCONUT CREEK	532	350	132	0	4	0	0	3	25	18	0
COOPER CITY	311	251	19	2	4	0	0	2	24	8	1
CORAL SPRINGS	1,397	878	380	0	18	2	0	9	69	37	4
DANIA BEACH	184	94	85	0	1	0	0	0	1	1	2
DAVIE	923	685	127	3	11	3	0	4	53	31	6
DEERFIELD BEACH	637	353	232	0	2	0	0	1	18	31	0
FORT LAUDERDALE	3,119	1,408	1,526	2	10	6	1	10	92	58	6
HALLANDALE	569	432	116	0	0	1	0	0	8	8	4
HOLLYWOOD	2,081	1,404	502	9	9	1	0	5	65	55	31
LAUDERDALE BY THE SEA	21	20	0	0	0	0	0	0	1	0	0
LAUDERDALE LAKES	509	30	466	0	1	0	0	0	5	7	0
LAUDERHILL	962	123	802	2	2	0	0	0	13	20	0
LIGHTHOUSE POINT	71	65	5	0	0	0	0	0	0	1	0
MARGATE	626	312	265	0	4	1	0	3	19	22	0
MIRAMAR	1,572	681	733	3	22	1	0	9	64	53	6
NORTH LAUDERDALE	590	164	392	0	2	0	0	1	7	23	1
OAKLAND PARK	389	201	161	0	0	0	0	3	16	8	0
PARKLAND	190	146	14	0	6	0	0	2	16	6	0
PEMBROKE PARK	53	6	47	0	0	0	0	0	0	0	0
PEMBROKE PINES	1,560	1,014	391	4	18	2	0	12	58	51	10
PLANTATION	1,021	657	255	0	7	3	0	5	57	33	4
POMPANO BEACH	1,733	806	835	0	3	1	0	3	48	36	1
SOUTHWEST RANCHES	52	45	5	0	0	0	0	0	1	1	0
SUNRISE	1,106	559	446	1	6	0	0	4	50	37	3
TAMARAC	622	322	255	0	3	1	0	2	22	15	2

**TABLE B-3 (Cont.): RESIDENT LIVE BIRTHS FOR INCORPORATED CITIES OF 2,400 OR MORE
POPULATION, BY RACE OF MOTHER, BY COUNTY, FLORIDA, 2014**

	TOTAL	WHITE	BLACK	AMER INDIAN	CHINESE	JAPANESE	HAWAIIAN	FILIPINO	OTHER ASIAN/ PAC ISL	MULTI - RACE & OTHER	UNK
BROWARD (Cont.)											
WEST PARK	179	53	120	0	0	0	0	0	1	3	2
WESTON	474	388	21	0	14	0	0	4	32	15	0
WILTON MANORS	44	25	16	0	0	0	0	0	2	1	0
BALANCE OF COUNTY	686	475	150	0	6	1	0	3	17	22	12
CALHOUN	131	117	13	0	0	0	0	1	0	0	0
BLOUNTSTOWN	24	17	6	0	0	0	0	1	0	0	0
BALANCE OF COUNTY	107	100	7	0	0	0	0	0	0	0	0
CHARLOTTE	1,007	889	81	2	4	0	0	8	6	17	0
PUNTA GORDA	83	75	2	1	1	0	0	0	2	2	0
BALANCE OF COUNTY	924	814	79	1	3	0	0	8	4	15	0
CITRUS	1,016	948	37	2	2	0	0	11	3	12	1
CRYSTAL RIVER	91	84	5	0	0	0	0	1	0	1	0
INVERNESS	149	141	4	1	0	0	0	0	1	2	0
BALANCE OF COUNTY	776	723	28	1	2	0	0	10	2	9	1
CLAY	2,083	1,741	208	2	10	1	0	29	16	65	11
GREEN COVE SPRINGS	46	40	4	0	0	0	0	2	0	0	0
ORANGE PARK	245	167	54	0	2	0	0	8	4	10	0
BALANCE OF COUNTY	1,792	1,534	150	2	8	1	0	19	12	55	11
COLLIER	3,288	2,749	382	11	2	0	0	3	28	111	2
MARCO ISLAND	6	6	0	0	0	0	0	0	0	0	0
NAPLES	361	295	43	0	0	0	0	2	5	15	1
BALANCE OF COUNTY	2,921	2,448	339	11	2	0	0	1	23	96	1
COLUMBIA	832	653	156	1	2	1	0	3	8	8	0
LAKE CITY	490	346	127	1	2	1	0	1	6	6	0
BALANCE OF COUNTY	342	307	29	0	0	0	0	2	2	2	0
MIAMI-DADE	31,990	23,765	7,059	18	122	17	1	74	239	360	335
AVENTURA	433	394	21	0	5	0	0	0	6	5	2
BAL HARBOUR	37	36	1	0	0	0	0	0	0	0	0
BAY HARBOR ISLANDS	56	55	1	0	0	0	0	0	0	0	0
BISCAYNE PARK	31	26	5	0	0	0	0	0	0	0	0
CORAL GABLES	145	137	3	0	2	0	0	1	1	0	1
CUTLER BAY	72	58	14	0	0	0	0	0	0	0	0
DORAL	361	332	8	0	2	0	0	0	10	6	3
EL PORTAL	13	10	2	0	0	0	0	0	1	0	0
FLORIDA CITY	88	62	24	0	0	0	0	0	1	1	0
HIALEAH	2,692	2,552	83	0	9	0	0	7	9	28	4
HIALEAH GARDENS	123	119	3	0	0	0	0	0	0	1	0
HOMESTEAD	1,002	764	214	0	1	1	0	3	8	11	0
KEY BISCAYNE	50	49	0	0	0	0	0	0	0	1	0
MIAMI	11,053	7,026	3,764	2	34	3	0	16	79	94	35
MIAMI BEACH	945	873	37	1	3	1	0	3	12	13	2
MIAMI GARDENS	1,165	379	761	0	0	1	0	2	7	15	0
MIAMI LAKES	276	247	18	0	0	0	0	0	0	9	2
MIAMI SHORES	89	68	13	0	0	0	0	2	4	1	1
MIAMI SPRINGS	74	70	1	1	0	0	0	0	1	1	0
NORTH BAY VILLAGE	56	54	0	0	1	0	0	0	0	1	0
NORTH MIAMI	652	229	410	0	0	1	0	3	2	5	2
NORTH MIAMI BEACH	615	336	253	1	11	2	0	1	4	6	1
OPA-LOCKA	321	131	187	0	0	0	0	1	0	2	0
PINECREST	11	10	0	0	1	0	0	0	0	0	0
PALMETTO BAY	23	21	2	0	0	0	0	0	0	0	0
SOUTH MIAMI	45	36	3	0	1	0	0	0	1	3	1
SUNNY ISLES BEACH	360	355	2	0	1	0	0	0	2	0	0
SURFSIDE	77	74	1	0	0	1	0	0	1	0	0
SWEETWATER	3	3	0	0	0	0	0	0	0	0	0
VIRGINIA GARDENS	9	9	0	0	0	0	0	0	0	0	0
WEST MIAMI	2	2	0	0	0	0	0	0	0	0	0
BALANCE OF COUNTY	11,111	9,248	1,228	13	51	7	1	35	90	157	281
DESOTO	384	334	41	1	0	0	0	1	1	5	1
ARCADIA	169	137	25	0	0	0	0	0	1	5	1
BALANCE OF COUNTY	215	197	16	1	0	0	0	1	0	0	0

**TABLE B-3 (Cont.): RESIDENT LIVE BIRTHS FOR INCORPORATED CITIES OF 2,400 OR MORE
POPULATION, BY RACE OF MOTHER, BY COUNTY, FLORIDA, 2014**

	TOTAL	WHITE	BLACK	AMER INDIAN	CHINESE	JAPANESE	HAWAIIAN	FILIPINO	OTHER ASIAN/ PAC ISL	MULTI - RACE & OTHER	UNK
DIXIE	169	158	9	0	0	0	0	0	0	2	0
DUVAL	12,514	6,992	4,387	10	41	17	5	147	421	470	24
ATLANTIC BEACH	247	195	33	1	0	0	0	5	3	9	1
BALDWIN	22	18	3	0	0	0	0	0	0	1	0
JACKSONVILLE	11,943	6,498	4,340	9	41	17	5	142	414	454	23
JACKSONVILLE BEACH	240	219	11	0	0	0	0	0	4	6	0
NEPTUNE BEACH	62	62	0	0	0	0	0	0	0	0	0
ESCAMBIA	3,880	2,461	1,183	11	10	6	1	32	60	115	1
CENTURY	31	18	13	0	0	0	0	0	0	0	0
PENSACOLA	1,388	832	460	3	6	1	0	17	22	46	1
BALANCE OF COUNTY	2,461	1,611	710	8	4	5	1	15	38	69	0
FLAGLER	833	661	112	1	3	0	0	5	15	32	4
BUNNELL	74	58	12	0	0	0	0	0	2	2	0
FLAGLER BEACH	35	31	1	0	0	0	0	0	1	2	0
PALM COAST	599	474	80	0	3	0	0	5	11	23	3
BALANCE OF COUNTY	125	98	19	1	0	0	0	0	1	5	1
FRANKLIN	89	79	10	0	0	0	0	0	0	0	0
APALACHICOLA	28	20	8	0	0	0	0	0	0	0	0
BALANCE OF COUNTY	61	59	2	0	0	0	0	0	0	0	0
GADSDEN	508	197	304	0	0	0	0	0	2	5	0
CHATTAHOOCHEE	38	10	28	0	0	0	0	0	0	0	0
GRETNA	15	2	13	0	0	0	0	0	0	0	0
HAVANA	47	21	24	0	0	0	0	0	0	2	0
QUINCY	171	51	116	0	0	0	0	0	1	3	0
BALANCE OF COUNTY	237	113	123	0	0	0	0	0	1	0	0
GILCHRIST	167	154	10	0	0	0	0	0	0	3	0
GLADES	60	46	10	2	0	0	0	0	0	2	0
GULF	117	97	13	1	1	0	0	2	0	3	0
PORT ST JOE	38	22	10	1	1	0	0	1	0	3	0
BALANCE OF COUNTY	79	75	3	0	0	0	0	1	0	0	0
HAMILTON	125	90	34	0	0	0	0	0	1	0	0
HARDEE	414	385	20	0	0	0	0	0	1	8	0
BOWLING GREEN	41	37	2	0	0	0	0	0	0	2	0
WAUCHULA	135	122	9	0	0	0	0	0	0	4	0
BALANCE OF COUNTY	238	226	9	0	0	0	0	0	1	2	0
HENDRY	569	490	61	13	0	0	0	1	1	3	0
CLEWISTON	63	42	12	7	0	0	0	0	0	2	0
LABELLE	108	102	4	2	0	0	0	0	0	0	0
BALANCE OF COUNTY	398	346	45	4	0	0	0	1	1	1	0
HERNANDO	1,488	1,290	116	4	3	1	1	7	26	36	4
BROOKSVILLE	248	197	38	2	0	0	0	0	5	6	0
BALANCE OF COUNTY	1,240	1,093	78	2	3	1	1	7	21	30	4
HIGHLANDS	937	745	152	2	4	0	0	8	6	17	3
AVON PARK	205	150	46	0	0	0	0	2	0	5	2
SEBRING	326	254	56	0	2	0	0	4	4	6	0
BALANCE OF COUNTY	406	341	50	2	2	0	0	2	2	6	1
HILLSBOROUGH	16,846	12,268	3,497	18	85	11	3	69	572	300	23
PLANT CITY	614	550	53	0	1	0	0	1	3	4	2
TAMPA	9,566	6,331	2,595	5	63	7	1	36	371	143	14
TEMPLE TERRACE	71	44	14	0	0	1	1	0	7	4	0
BALANCE OF COUNTY	6,595	5,343	835	13	21	3	1	32	191	149	7
HOLMES	207	195	4	1	0	0	0	1	0	6	0
BONIFAY	67	61	3	0	0	0	0	1	0	2	0

**TABLE B-3 (Cont.): RESIDENT LIVE BIRTHS FOR INCORPORATED CITIES OF 2,400 OR MORE
POPULATION, BY RACE OF MOTHER, BY COUNTY, FLORIDA, 2014**

	TOTAL	WHITE	BLACK	AMER INDIAN	CHINESE	JAPANESE	HAWAIIAN	FILIPINO	OTHER ASIAN/ PAC ISL	MULTI - RACE & OTHER	UNK
HOLMES (Cont.)											
BALANCE OF COUNTY	140	134	1	1	0	0	0	0	0	4	0
INDIAN RIVER											
FELLSMERE	116	29	9	0	0	0	0	0	0	0	78
INDIAN RIVER SHORES	1	1	0	0	0	0	0	0	0	0	0
SEBASTIAN	148	118	16	1	1	0	0	1	2	1	8
VERO BEACH	241	159	47	0	1	0	0	0	2	2	30
BALANCE OF COUNTY	776	483	158	1	3	0	0	3	12	9	107
JACKSON											
GRACEVILLE	37	22	13	0	0	0	0	0	0	2	0
MARIANNA	134	64	65	1	1	0	0	0	2	1	0
BALANCE OF COUNTY	343	262	72	0	0	0	0	0	1	7	1
JEFFERSON											
MONTICELLO	71	28	42	0	0	0	0	0	0	1	0
BALANCE OF COUNTY	56	34	21	0	0	0	0	0	0	1	0
LAFAYETTE											
	76	71	5	0	0	0	0	0	0	0	0
LAKE											
CLERMONT	565	437	69	0	2	1	0	3	14	38	1
EUSTIS	243	177	52	2	0	0	0	1	2	9	0
FRUITLAND PARK	73	66	5	1	0	0	0	0	0	1	0
GROVELAND	161	126	24	0	0	0	0	2	0	9	0
LADY LAKE	114	90	12	2	0	0	0	0	7	3	0
LEESBURG	454	301	120	0	0	1	0	2	7	23	0
MASCOTTE	83	70	9	0	0	0	0	0	1	2	1
MINNEOLA	93	74	10	0	0	0	0	0	1	8	0
MOUNT DORA	195	148	40	0	0	0	0	0	4	3	0
TAVARES	118	98	12	1	1	0	0	0	3	3	0
UMATILLA	57	56	1	0	0	0	0	0	0	0	0
BALANCE OF COUNTY	1,010	907	68	1	3	0	0	4	4	23	0
LEE											
BONITA SPRINGS	46	45	1	0	0	0	0	0	0	0	0
CAPE CORAL	1,454	1,318	82	1	0	0	0	8	20	19	6
FORT MYERS	1,279	819	416	0	5	0	0	4	5	27	3
FORT MYERS BEACH	9	8	0	0	0	0	0	0	1	0	0
SANIBEL	2	2	0	0	0	0	0	0	0	0	0
BALANCE OF COUNTY	3,562	3,002	451	6	6	1	0	7	31	49	9
LEON											
TALLAHASSEE	2,562	1,234	1,163	2	24	3	1	7	54	74	0
BALANCE OF COUNTY	523	382	121	1	4	0	0	2	7	6	0
LEVY											
WILLISTON	52	34	15	0	0	0	0	0	1	2	0
BALANCE OF COUNTY	357	321	28	0	0	0	0	0	1	6	1
LIBERTY											
	92	84	7	0	0	0	0	0	0	1	0
MADISON											
MADISON	75	23	52	0	0	0	0	0	0	0	0
BALANCE OF COUNTY	116	81	34	0	0	0	0	0	0	1	0
MANATEE											
BRADENTON	1,692	1,254	266	0	2	0	0	7	12	144	7
BRADENTON BEACH	1	1	0	0	0	0	0	0	0	0	0
HOLMES BEACH	3	3	0	0	0	0	0	0	0	0	0
LONGBOAT KEY	2	2	0	0	0	0	0	0	0	0	0
PALMETTO	272	203	51	1	0	0	0	2	0	12	3
BALANCE OF COUNTY	1,575	1,310	138	2	2	1	2	7	22	85	6
MARION											
BELLEVIEW	56	51	5	0	0	0	0	0	0	0	0
OCALA	1,129	734	334	2	7	0	0	5	15	32	0
BALANCE OF COUNTY	2,232	1,861	294	1	1	1	0	10	16	47	1

TABLE B-3 (Cont.): RESIDENT LIVE BIRTHS FOR INCORPORATED CITIES OF 2,400 OR MORE
POPULATION, BY RACE OF MOTHER, BY COUNTY, FLORIDA, 2014

	TOTAL	WHITE	BLACK	AMER INDIAN	CHINESE	JAPANESE	HAWAIIAN	FILIPINO	OTHER ASIAN/ PAC ISL	MULTI - RACE & OTHER	UNK
MARTIN	1,263	1,098	108	2	2	1	0	4	11	31	6
PORT SAINT LUCIE	7	4	2	0	0	0	0	0	1	0	0
STUART	374	312	44	1	0	0	0	1	1	12	3
BALANCE OF COUNTY	882	782	62	1	2	1	0	3	9	19	3
MONROE	749	618	88	0	1	1	0	5	16	20	0
ISLAMORADA	3	3	0	0	0	0	0	0	0	0	0
KEY WEST	378	281	65	0	0	0	0	1	14	17	0
MARATHON	64	57	6	0	0	0	0	0	0	1	0
BALANCE OF COUNTY	304	277	17	0	1	1	0	4	2	2	0
NASSAU	745	681	42	0	1	1	0	2	0	16	2
FERNANDINA BEACH	138	118	14	0	0	1	0	0	0	5	0
HILLIARD	52	48	3	0	0	0	0	0	0	1	0
BALANCE OF COUNTY	555	515	25	0	1	0	0	2	0	10	2
OKALOOSA	2,827	2,301	325	8	7	8	1	33	38	97	9
CRESTVIEW	585	455	91	1	1	3	0	8	4	20	2
DESTIN	200	183	9	0	0	0	0	3	2	3	0
FORT WALTON BEACH	763	547	139	3	0	1	1	15	11	41	5
MARY ESTHER	132	105	12	0	1	1	0	1	3	9	0
NICEVILLE	296	270	5	0	2	2	0	2	7	8	0
VALPARAISO	46	42	3	0	0	0	0	0	1	0	0
BALANCE OF COUNTY	805	699	66	4	3	1	0	4	10	16	2
OKEECHOBEE	553	479	30	15	0	0	0	0	3	9	17
OKEECHOBEE	453	388	30	9	0	0	0	0	2	7	17
BALANCE OF COUNTY	100	91	0	6	0	0	0	0	1	2	0
ORANGE	16,220	10,406	4,399	10	118	27	5	142	426	676	11
AOPKA	899	688	164	1	0	0	0	5	14	25	2
BELLE ISLE	17	17	0	0	0	0	0	0	0	0	0
EATONVILLE	4	1	3	0	0	0	0	0	0	0	0
MAITLAND	119	85	19	0	4	0	0	2	4	5	0
OCOEE	379	275	72	0	1	0	0	5	12	14	0
ORLANDO	8,904	5,323	2,782	4	62	10	4	73	244	397	5
WINDERMERE	231	186	10	1	3	0	0	5	15	11	0
WINTER GARDEN	504	362	91	0	10	1	0	3	14	23	0
WINTER PARK	408	327	51	0	2	2	0	5	9	12	0
BALANCE OF COUNTY	4,755	3,142	1,207	4	36	14	1	44	114	189	4
OSCEOLA	4,195	3,451	466	3	16	2	0	29	58	162	8
KISSIMMEE	1,948	1,595	217	2	7	0	0	11	33	79	4
ST CLOUD	467	420	22	0	3	0	0	4	4	13	1
BALANCE OF COUNTY	1,780	1,436	227	1	6	2	0	14	21	70	3
PALM BEACH	14,433	9,369	4,187	9	77	7	2	76	277	407	22
BELLE GLADE	279	123	154	0	0	0	0	0	1	0	1
BOCA RATON	1,349	1,066	130	0	19	1	0	7	43	81	2
BOYNTON BEACH	1,468	779	586	2	5	1	0	11	43	39	2
DELRAY BEACH	773	431	300	0	2	0	0	3	15	18	4
GREENACRES	407	259	121	0	1	1	0	6	9	10	0
HIGHLAND BEACH	4	4	0	0	0	0	0	0	0	0	0
HYPOLUXO	13	7	5	0	0	0	0	0	0	1	0
JUNO BEACH	9	9	0	0	0	0	0	0	0	0	0
JUPITER	678	614	25	1	5	0	0	4	17	12	0
LAKE CLARKE SHORES	3	2	1	0	0	0	0	0	0	0	0
LAKE PARK	149	51	94	0	1	0	0	0	0	3	0
LAKE WORTH	1,747	1,226	458	0	7	0	0	9	22	25	0
LANTANA	272	180	85	0	0	0	0	1	1	5	0
MANGONIA PARK	1	0	1	0	0	0	0	0	0	0	0
NORTH PALM BEACH	88	76	4	0	1	0	0	1	5	1	0
PAHOKEE	92	21	71	0	0	0	0	0	0	0	0
PALM BEACH	35	29	3	0	0	0	0	0	1	2	0
PALM BEACH GARDENS	577	486	49	0	7	2	0	2	14	17	0
PALM SPRINGS	185	123	53	0	0	0	0	0	1	8	0
RIVIERA BEACH	482	83	378	0	1	0	0	3	6	10	1
ROYAL PALM BEACH	405	286	79	0	4	0	0	3	16	16	1
SOUTH BAY	50	14	35	0	0	0	0	0	0	0	1

TABLE B-3 (Cont.): RESIDENT LIVE BIRTHS FOR INCORPORATED CITIES OF 2,400 OR MORE
POPULATION, BY RACE OF MOTHER, BY COUNTY, FLORIDA, 2014

	TOTAL	WHITE	BLACK	AMER INDIAN	CHINESE	JAPANESE	HAWAIIAN	FILIPINO	OTHER ASIAN/ PAC ISL	MULTI - RACE & OTHER	UNK
PALM BEACH (Cont.)											
TEQUESTA	61	58	2	0	0	0	0	1	0	0	0
WELLINGTON	501	402	58	2	3	2	0	4	16	14	0
WEST PALM BEACH	3,507	2,098	1,237	0	9	0	1	9	47	101	5
BALANCE OF COUNTY	1,298	942	258	4	12	0	1	12	20	44	5
PASCO											
DADE CITY	118	104	11	0	0	0	0	0	2	1	0
NEW PORT RICHEY	657	603	29	0	0	0	0	4	11	7	3
PORT RICHEY	344	305	21	0	3	0	0	2	2	10	1
ZEPHYRHILLS	190	162	23	0	0	0	0	1	0	3	1
BALANCE OF COUNTY	3,517	3,094	230	5	14	4	0	16	81	55	18
PINELLAS											
BELLEAIR	19	19	0	0	0	0	0	0	0	0	0
BELLEAIR BLUFFS	14	14	0	0	0	0	0	0	0	0	0
CLEARWATER	1,731	1,362	239	0	2	1	1	10	48	46	22
DUNEDIN	238	218	10	0	1	0	0	0	3	6	0
GULFPORT	76	60	9	0	1	0	0	0	2	2	2
INDIAN ROCKS BEACH	17	14	0	0	2	0	0	0	1	0	0
KENNETH CITY	36	24	4	1	0	0	0	0	5	1	1
LARGO	868	694	96	3	3	0	0	6	25	27	14
MADEIRA BEACH	19	16	0	0	0	0	0	1	2	0	0
OLDSMAR	174	143	12	1	0	0	0	2	14	2	0
PINELLAS PARK	483	370	38	3	3	0	0	10	32	19	8
REDINGTON SHORES	8	7	0	0	0	0	0	0	0	1	0
SAFETY HARBOR	117	100	7	0	2	0	0	2	2	3	1
SEMINOLE	346	311	10	3	1	1	0	4	7	2	7
SOUTH PASADENA	10	10	0	0	0	0	0	0	0	0	0
ST PETERSBURG	3,097	1,751	983	2	17	1	0	16	122	118	87
ST PETERSBURG BEACH	33	25	3	0	0	0	0	1	0	4	0
TARPON SPRINGS	220	179	27	0	0	0	0	0	1	10	3
TREASURE ISLAND	17	15	0	0	0	0	0	0	1	1	0
BALANCE OF COUNTY	996	877	45	2	5	1	0	13	29	20	4
POLK											
AUBURNDALE	275	218	47	0	0	0	0	0	1	9	0
BARTOW	235	158	71	1	0	0	0	0	1	4	0
DUNDEE	31	23	8	0	0	0	0	0	0	0	0
EAGLE LAKE	35	28	4	0	0	0	0	0	0	3	0
FORT MEADE	75	65	10	0	0	0	0	0	0	0	0
FROSTPROOF	53	46	5	0	0	0	0	0	0	2	0
HAINES CITY	371	268	86	1	0	0	0	0	4	12	0
LAKE ALFRED	87	66	16	0	1	0	0	0	0	4	0
LAKE WALES	273	178	88	0	0	0	0	0	1	5	1
LAKELAND	1,457	1,027	353	1	4	0	0	12	20	40	0
MULBERRY	69	63	5	0	0	0	0	0	0	1	0
WINTER HAVEN	844	533	281	0	3	0	0	5	8	14	0
BALANCE OF COUNTY	3,584	2,963	491	4	6	1	0	12	33	70	4
PUTNAM											
PALATKA	831	623	178	0	1	0	0	5	1	23	0
BALANCE OF COUNTY	236	127	104	0	0	0	0	0	0	5	0
BALANCE OF COUNTY	595	496	74	0	1	0	0	5	1	18	0
SAINT JOHNS											
ST AUGUSTINE	2,148	1,856	161	2	10	3	0	15	48	50	3
BALANCE OF COUNTY	705	577	93	1	1	0	0	1	10	22	0
BALANCE OF COUNTY	1,443	1,279	68	1	9	3	0	14	38	28	3
SAINT LUCIE											
FORT PIERCE	2,969	1,978	810	5	11	2	0	7	28	103	25
PORT ST LUCIE	962	493	448	0	1	1	0	0	4	11	4
BALANCE OF COUNTY	1,717	1,269	309	3	8	1	0	7	22	81	17
BALANCE OF COUNTY	290	216	53	2	2	0	0	0	2	11	4
SANTA ROSA											
GULF BREEZE	1,822	1,625	89	5	4	4	0	17	20	55	3
MILTON	74	60	4	0	3	1	0	2	1	3	0
BALANCE OF COUNTY	184	151	22	1	0	0	0	1	1	8	0
BALANCE OF COUNTY	1,564	1,414	63	4	1	3	0	14	18	44	3
SARASOTA											
NORTH PORT	2,955	2,564	239	2	7	0	0	12	42	75	14
BALANCE OF COUNTY	197	168	19	1	1	0	0	1	1	3	3

TABLE B-3 (Cont.): RESIDENT LIVE BIRTHS FOR INCORPORATED CITIES OF 2,400 OR MORE
POPULATION, BY RACE OF MOTHER, BY COUNTY, FLORIDA, 2014

	TOTAL	WHITE	BLACK	AMER INDIAN	CHINESE	JAPANESE	HAWAIIAN	FILIPINO	OTHER ASIAN/ PAC ISL	MULTI - RACE & OTHER	UNK
SARASOTA (Cont.)											
SARASOTA	1,229	1,027	138	1	4	0	0	2	19	31	7
VENICE	139	134	2	0	0	0	0	0	1	1	1
BALANCE OF COUNTY	1,390	1,235	80	0	2	0	0	9	21	40	3
SEMINOLE											
SEMINOLE	4,515	3,451	694	5	38	5	0	28	127	161	6
ALTAMONTE SPRINGS	610	442	116	2	3	0	0	2	19	24	2
CASSELBERRY	358	281	43	0	3	0	0	3	11	17	0
LAKE MARY	287	219	28	1	2	0	0	3	17	16	1
LONGWOOD	342	294	19	1	6	0	0	3	8	11	0
MAITLAND	60	49	6	0	1	1	0	0	2	1	0
OVIEDO	439	354	36	0	10	0	0	1	21	17	0
SANFORD	936	567	297	1	1	2	0	4	23	38	3
WINTER SPRINGS	329	270	29	0	5	0	0	3	9	13	0
BALANCE OF COUNTY	1,154	975	120	0	7	2	0	9	17	24	0
SUMTER											
SUMTER	494	395	82	0	0	0	0	2	5	8	2
BUSHNELL	54	41	11	0	0	0	0	0	1	1	0
WILDWOOD	112	72	38	0	0	0	0	0	1	1	0
BALANCE OF COUNTY	328	282	33	0	0	0	0	2	3	6	2
SUWANNEE											
SUWANNEE	440	363	63	1	1	0	0	0	2	10	0
LIVE OAK	184	128	50	0	1	0	0	0	1	4	0
BALANCE OF COUNTY	256	235	13	1	0	0	0	0	1	6	0
TAYLOR											
TAYLOR	217	169	45	0	0	0	0	0	0	3	0
PERRY	124	82	40	0	0	0	0	0	0	2	0
BALANCE OF COUNTY	93	87	5	0	0	0	0	0	0	1	0
UNION											
UNION	154	131	21	0	1	0	0	0	0	1	0
VOLUSIA											
VOLUSIA	4,767	3,744	780	6	18	4	0	20	71	120	4
DAYTONA BEACH	917	482	387	0	4	0	0	2	15	27	0
DAYTONA BEACH SHORES	9	7	0	0	0	0	0	0	1	1	0
DEBARY	140	123	8	0	0	0	0	0	3	6	0
DELAND	548	453	76	1	1	0	0	5	5	7	0
DELTONA	855	702	97	0	2	1	0	5	15	31	2
EDGEWATER	186	172	8	0	0	0	0	0	0	5	1
HOLLY HILL	131	83	45	1	0	0	0	0	0	2	0
LAKE HELEN	14	13	1	0	0	0	0	0	0	0	0
NEW SMYRNA BEACH	235	211	16	0	1	2	0	0	2	3	0
ORANGE CITY	178	153	16	0	1	0	0	1	3	4	0
ORMOND BEACH	420	365	28	2	2	0	0	1	9	12	1
PIERSON	34	34	0	0	0	0	0	0	0	0	0
PONCE INLET	3	3	0	0	0	0	0	0	0	0	0
PORT ORANGE	477	422	24	0	7	0	0	2	15	7	0
SOUTH DAYTONA	111	87	19	0	0	1	0	2	0	2	0
BALANCE OF COUNTY	509	434	55	2	0	0	0	2	3	13	0
WAKULLA											
WAKULLA	335	299	33	0	1	0	0	0	0	2	0
WALTON											
WALTON	725	673	30	0	0	0	0	2	10	9	1
DEFUNIAK SPRINGS	132	114	17	0	0	0	0	0	1	0	0
BALANCE OF COUNTY	593	559	13	0	0	0	0	2	9	9	1
WASHINGTON											
WASHINGTON	243	203	30	0	0	0	0	1	0	7	2
CHIPLEY	76	59	13	0	0	0	0	0	0	3	1
BALANCE OF COUNTY	167	144	17	0	0	0	0	1	0	4	1

TABLE B-4: RESIDENT LIVE BIRTHS BY TYPE OF PLACE OF DELIVERY AND ATTENDANT, BY COUNTY, FLORIDA, 2014

	TOTAL	HOSPITAL			BIRTHING CENTER			OTHER NAMED PLACE 2,074	UNK 7
		PHYSICIAN	MIDWIFE	OTHER/ UNKNOWN	PHYSICIAN	MIDWIFE	OTHER/ UNKNOWN		
FLORIDA	219,905	192,530	22,564	958	0	1,768	4		
ALACHUA	2,916	2,487	335	3	0	29	2	60	
BAKER	365	320	37	4	0	2	0	2	
BAY	2,328	2,054	259	2	0	3	0	10	
BRADFORD	282	231	46	3	0	1	0	1	
BREVARD	5,259	4,866	256	26	0	15	0	96	
BROWARD	22,213	19,639	2,179	69	0	120	0	205	
CALHOUN	131	114	14	1	0	1	0	1	
CHARLOTTE	1,007	943	34	10	0	5	0	15	
CITRUS	1,016	977	20	1	0	4	0	14	
CLAY	2,083	1,680	358	8	0	22	1	14	
COLLIER	3,288	3,102	45	63	0	57	0	21	
COLUMBIA	832	689	118	6	0	6	0	13	
MIAMI-DADE	31,990	30,908	682	29	0	191	0	179	
DESOTO	384	365	11	3	0	2	0	3	
DIXIE	169	142	24	0	0	0	0	3	
DUVAL	12,514	11,256	933	95	0	112	0	117	
ESCAMBIA	3,880	3,594	259	4	0	5	0	18	
FLAGLER	833	719	98	1	0	5	0	10	
FRANKLIN	100	84	15	0	0	0	0	1	
GADSDEN	535	427	98	5	0	2	0	3	
GILCHRIST	167	141	22	1	0	1	0	2	
GLADES	60	55	5	0	0	0	0	0	
GULF	117	98	17	0	0	0	0	2	
HAMILTON	145	123	22	0	0	0	0	0	
HARDEE	414	405	3	2	0	3	0	1	
HENDRY	569	413	147	2	0	3	0	4	
HERNANDO	1,488	1,246	213	5	0	14	0	10	
HIGHLANDS	937	925	4	1	0	3	0	4	
HILLSBOROUGH	16,846	14,772	1,733	55	0	120	0	166	
HOLMES	207	194	11	0	0	1	0	1	
INDIAN RIVER	1,282	1,217	32	0	0	1	0	32	
JACKSON	514	489	21	1	0	3	0	0	
JEFFERSON	127	91	31	0	0	2	0	3	
LAFAYETTE	76	66	10	0	0	0	0	0	
LAKE	3,166	2,957	95	33	0	49	0	32	
LEE	6,352	4,553	1,670	19	0	72	0	38	
LEON	3,085	2,526	466	10	0	47	0	36	
LEVY	409	351	49	1	0	3	0	5	
LIBERTY	92	83	8	0	0	1	0	0	
MADISON	191	136	50	1	0	1	0	3	
MANATEE	3,545	3,202	279	1	0	32	0	31	
MARION	3,417	2,803	506	4	0	56	0	48	
MARTIN	1,263	626	597	4	0	1	0	35	
MONROE	749	658	73	11	0	1	0	6	
NASSAU	745	637	87	5	0	7	0	9	
OKALOOSA	2,827	2,675	91	5	0	34	0	22	
OKEECHOBEE	553	341	206	2	0	0	0	4	
ORANGE	16,221	14,286	1,379	230	0	165	0	160	
OSCEOLA	4,195	3,863	254	32	0	20	0	26	
PALM BEACH	14,433	11,944	2,281	41	0	35	0	131	
PASCO	4,826	4,347	356	17	0	58	0	48	
PINELLAS	8,519	6,386	1,880	38	0	158	0	57	
POLK	7,608	6,588	893	21	0	44	0	62	
PUTNAM	831	743	75	3	0	2	1	7	
SAINT JOHNS	2,148	1,773	305	9	0	26	0	35	
SAINT LUCIE	2,969	1,992	928	10	0	0	0	39	
SANTA ROSA	1,822	1,691	116	0	0	5	0	10	
SARASOTA	2,955	2,627	203	3	0	45	0	77	
SEMINOLE	4,515	3,506	861	32	0	70	0	46	
SUMTER	494	475	11	0	0	3	0	5	
SUWANNEE	440	359	67	5	0	4	0	5	
TAYLOR	217	188	27	1	0	1	0	0	
UNION	154	125	28	1	0	0	0	0	
VOLUSIA	4,767	4,041	542	16	0	89	0	79	
WAKULLA	335	268	60	1	0	3	0	3	
WALTON	725	714	4	2	0	1	0	4	
WASHINGTON	243	219	23	0	0	1	0	0	

TABLE B-5: RESIDENT LIVE BIRTHS BY BIRTHWEIGHT, BY COUNTY, FLORIDA, 2014

	BIRTHWEIGHT IN GRAMS											LESS THAN 1500 GRAMS		LESS THAN 2500 GRAMS	
	TOTAL	<500	500-999	1000-1499	1500-1999	2000-2499	2500-2999	3000-3499	3500-3999	4000+	UNK	NUMBER	%	NUMBER	%
FLORIDA	219,905	398	1,356	1,796	3,768	11,786	41,797	86,874	56,479	15,625	26	3,550	1.6	19,104	8.7
ALACHUA	2,916	8	24	33	57	164	572	1,082	736	240	0	65	2.2	286	9.8
BAKER	365	0	2	6	8	16	60	153	91	29	0	8	2.2	32	8.8
BAY	2,328	3	15	21	28	112	441	885	622	201	0	39	1.7	179	7.7
BRADFORD	282	1	1	3	1	15	50	117	71	23	0	5	1.8	21	7.4
BREVARD	5,259	15	18	36	81	280	921	2,073	1,409	426	0	69	1.3	430	8.2
BROWARD	22,213	34	193	204	436	1,280	4,492	9,052	5,251	1,269	2	431	1.9	2,147	9.7
CALHOUN	131	0	1	4	3	7	27	48	29	12	0	5	3.8	15	11.5
CHARLOTTE	1,007	0	4	7	11	51	192	428	256	58	0	11	1.1	73	7.2
CITRUS	1,016	1	3	7	22	58	189	387	269	79	1	11	1.1	91	9.0
CLAY	2,083	2	13	18	42	107	376	814	532	179	0	33	1.6	182	8.7
COLLIER	3,288	3	24	13	38	151	582	1,276	952	249	0	40	1.2	229	7.0
COLUMBIA	832	1	7	6	19	52	162	332	193	60	0	14	1.7	85	10.2
MIAMI-DADE	31,990	47	218	297	555	1,701	6,324	13,074	7,867	1,899	8	562	1.8	2,818	8.8
DESOTO	384	2	0	0	7	18	62	135	114	46	0	2	0.5	27	7.0
DIXIE	169	0	0	0	1	5	36	66	46	15	0	0	0.0	6	3.6
DUVAL	12,514	36	81	126	238	700	2,480	4,859	3,091	902	1	243	1.9	1,181	9.4
ESCAMBIA	3,880	8	30	32	72	258	766	1,501	935	278	0	70	1.8	400	10.3
FLAGLER	833	2	4	4	18	35	136	336	227	71	0	10	1.2	63	7.6
FRANKLIN	100	0	0	1	1	6	22	37	29	4	0	1	1.0	8	8.0
GADSDEN	535	0	6	2	6	67	132	194	101	27	0	8	1.5	81	15.1
GILCHRIST	167	1	0	1	3	6	27	70	42	17	0	2	1.2	11	6.6
GLADES	60	0	0	1	0	2	16	22	15	4	0	1	1.7	3	5.0
GULF	117	0	1	0	0	8	18	40	39	11	0	1	0.9	9	7.7
HAMILTON	145	1	1	0	1	8	29	54	40	11	0	2	1.4	11	7.6
HARDEE	414	2	2	1	2	20	72	169	113	32	1	5	1.2	27	6.5
HENDRY	569	0	0	3	6	24	103	224	168	41	0	3	0.5	33	5.8
HERNANDO	1,488	1	7	10	21	87	298	570	369	124	1	18	1.2	126	8.5
HIGHLANDS	937	4	8	12	11	44	188	394	214	62	0	24	2.6	79	8.4
HILLSBOROUGH	16,846	48	84	120	287	956	3,160	6,680	4,229	1,280	2	252	1.5	1,495	8.9
HOLMES	207	0	0	0	4	13	37	84	54	15	0	0	0.0	17	8.2
INDIAN RIVER	1,282	2	5	8	15	59	243	499	373	78	0	15	1.2	89	6.9
JACKSON	514	1	4	3	9	29	123	199	120	26	0	8	1.6	46	8.9
JEFFERSON	127	0	0	0	4	11	28	45	32	7	0	0	0.0	15	11.8
LAFAYETTE	76	0	0	0	1	2	14	40	13	6	0	0	0.0	3	3.9
LAKE	3,166	11	21	14	49	190	619	1,206	799	257	0	46	1.5	285	9.0
LEE	6,352	15	36	52	91	313	1,166	2,493	1,723	463	0	103	1.6	507	8.0
LEON	3,085	12	19	22	73	173	620	1,150	788	228	0	53	1.7	299	9.7
LEVY	409	0	3	4	7	27	65	147	120	36	0	7	1.7	41	10.0
LIBERTY	92	0	0	2	2	4	21	31	25	7	0	2	2.2	8	8.7
MADISON	191	0	3	4	3	16	33	67	54	11	0	7	3.7	26	13.6
MANATEE	3,545	3	20	17	41	168	656	1,305	1,011	324	0	40	1.1	249	7.0
MARION	3,417	13	24	29	61	183	702	1,352	824	229	0	66	1.9	310	9.1
MARTIN	1,263	2	5	10	15	51	225	491	358	106	0	17	1.3	83	6.6
MONROE	749	1	3	1	9	29	117	314	214	61	0	5	0.7	43	5.7
NASSAU	745	1	3	3	17	27	142	285	212	55	0	7	0.9	51	6.8
OKALOOSA	2,827	2	16	22	51	133	488	1,135	780	200	0	40	1.4	224	7.9
OKEECHOBEE	553	0	6	1	6	23	106	212	150	49	0	7	1.3	36	6.5
ORANGE	16,221	37	100	131	263	867	3,105	6,398	4,191	1,124	5	268	1.7	1,398	8.6
OSCEOLA	4,195	5	27	33	72	241	813	1,654	1,083	267	0	65	1.5	378	9.0
PALM BEACH	14,433	15	80	137	271	718	2,764	5,964	3,620	860	4	232	1.6	1,221	8.5
PASCO	4,826	11	20	42	84	271	886	1,844	1,272	396	0	73	1.5	428	8.9
PINELLAS	8,519	8	47	69	157	432	1,508	3,249	2,344	705	0	124	1.5	713	8.4
POLK	7,608	12	54	55	137	393	1,378	2,984	2,004	590	1	121	1.6	651	8.6
PUTNAM	831	1	7	11	14	60	180	318	189	51	0	19	2.3	93	11.2
SAINT JOHNS	2,148	5	14	10	26	105	346	796	647	199	0	29	1.4	160	7.4
SAINT LUCIE	2,969	4	14	27	48	144	538	1,214	765	215	0	45	1.5	237	8.0
SANTA ROSA	1,822	1	8	13	21	112	299	661	547	160	0	22	1.2	155	8.5
SARASOTA	2,955	0	14	14	45	128	475	1,119	869	291	0	28	0.9	201	6.8
SEMINOLE	4,515	4	23	35	60	217	765	1,746	1,287	378	0	62	1.4	339	7.5
SUMTER	494	1	3	1	19	39	110	176	118	27	0	5	1.0	63	12.8
SUWANNEE	440	3	0	6	11	20	97	165	105	33	0	9	2.0	40	9.1
TAYLOR	217	0	0	3	2	12	46	81	55	18	0	3	1.4	17	7.8
UNION	154	0	1	3	4	10	30	45	46	15	0	4	2.6	18	11.7
VOLUSIA	4,767	7	21	39	88	262	871	1,824	1,283	372	0	67	1.4	417	8.7
WAKULLA	335	0	2	3	3	16	52	129	92	38	0	5	1.5	24	7.2
WALTON	725	0	2	3	8	38	146	282	189	57	0	5	0.7	51	7.0
WASHINGTON	243	1	4	0	2	10	43	92	70	21	0	5	2.1	17	7.0

TABLE B-5 (Cont.): RESIDENT LIVE BIRTHS TO WHITE MOTHERS BY BIRTHWEIGHT, BY COUNTY, FLORIDA, 2014

	BIRTHWEIGHT IN GRAMS											LESS THAN 1500 GRAMS		LESS THAN 2500 GRAMS	
	TOTAL	<500	500- 999	1000- 1499	1500- 1999	2000- 2499	2500- 2999	3000- 3499	3500- 3999	4000+	UNK	NUMBER	%	NUMBER	%
FLORIDA	156,999	191	684	1,008	2,280	7,231	26,746	61,850	44,185	12,815	9	1,883	1.2	11,394	7.3
ALACHUA	1,730	1	13	10	16	72	255	644	538	181	0	24	1.4	112	6.5
BAKER	318	0	1	5	7	13	50	134	80	28	0	6	1.9	26	8.2
BAY	1,777	1	9	13	19	67	298	682	506	182	0	23	1.3	109	6.1
BRADFORD	226	0	0	2	1	11	36	94	64	18	0	2	0.9	14	6.2
BREVARD	4,111	7	12	29	55	197	638	1,596	1,201	376	0	48	1.2	300	7.3
BROWARD	11,947	6	60	67	173	551	2,074	4,934	3,279	803	0	133	1.1	857	7.2
CALHOUN	117	0	1	4	3	7	25	39	27	11	0	5	4.3	15	12.8
CHARLOTTE	889	0	4	7	10	46	158	375	236	53	0	11	1.2	67	7.5
CITRUS	948	0	3	5	21	56	179	356	250	77	1	8	0.8	85	9.0
CLAY	1,741	1	10	14	33	76	302	683	462	160	0	25	1.4	134	7.7
COLLIER	2,749	2	15	10	29	117	475	1,050	828	223	0	27	1.0	173	6.3
COLUMBIA	653	1	4	5	17	39	117	259	159	52	0	10	1.5	66	10.1
MIAMI-DADE	23,765	25	123	178	351	1,078	4,325	9,812	6,341	1,529	3	326	1.4	1,755	7.4
DESOTO	334	2	0	0	3	16	49	117	103	44	0	2	0.6	21	6.3
DIXIE	158	0	0	0	1	5	32	64	43	13	0	0	0.0	6	3.8
DUVAL	6,992	17	25	49	100	334	1,141	2,639	2,038	649	0	91	1.3	525	7.5
ESCAMBIA	2,461	3	10	12	38	123	427	933	682	233	0	25	1.0	186	7.6
FLAGLER	661	2	1	4	12	25	107	262	185	63	0	7	1.1	44	6.7
FRANKLIN	90	0	0	1	1	5	20	33	27	3	0	1	1.1	7	7.8
GADSDEN	197	0	1	1	3	12	34	78	53	15	0	2	1.0	17	8.6
GILCHRIST	154	1	0	1	3	5	26	62	41	15	0	2	1.3	10	6.5
GLADES	46	0	0	0	0	2	12	17	12	3	0	0	0.0	2	4.3
GULF	97	0	0	0	0	6	14	35	31	11	0	0	0.0	6	6.2
HAMILTON	97	1	1	0	1	4	12	38	30	10	0	2	2.1	7	7.2
HARDEE	385	2	2	1	1	18	66	159	104	31	1	5	1.3	24	6.2
HENDRY	490	0	0	1	3	20	86	191	149	40	0	1	0.2	24	4.9
HERNANDO	1,290	1	7	8	17	75	254	487	326	114	1	16	1.2	108	8.4
HIGHLANDS	745	3	7	10	7	32	132	322	178	54	0	20	2.7	59	7.9
HILLSBOROUGH	12,268	24	40	61	185	598	2,042	4,871	3,382	1,063	2	125	1.0	908	7.4
HOLMES	195	0	0	0	4	11	34	80	52	14	0	0	0.0	15	7.7
INDIAN RIVER	790	0	3	5	9	31	132	307	252	51	0	8	1.0	48	6.1
JACKSON	348	0	1	3	7	16	82	128	89	22	0	4	1.1	27	7.8
JEFFERSON	62	0	0	0	1	3	13	17	23	5	0	0	0.0	4	6.5
LAFAYETTE	71	0	0	0	1	2	13	36	13	6	0	0	0.0	3	4.2
LAKE	2,550	6	14	6	31	136	465	975	694	223	0	26	1.0	193	7.6
LEE	5,194	11	25	42	64	223	890	2,051	1,481	407	0	78	1.5	365	7.0
LEON	1,616	2	2	7	24	58	237	594	508	184	0	11	0.7	93	5.8
LEVY	355	0	1	3	6	21	55	126	110	33	0	4	1.1	31	8.7
LIBERTY	84	0	0	2	1	3	17	30	25	6	0	2	2.4	6	7.1
MADISON	104	0	1	3	1	5	13	34	38	9	0	4	3.8	10	9.6
MANATEE	2,773	1	18	8	30	119	475	1,008	836	278	0	27	1.0	176	6.3
MARION	2,646	6	14	19	41	126	501	1,045	685	209	0	39	1.5	206	7.8
MARTIN	1,098	1	4	10	12	41	185	431	320	94	0	15	1.4	68	6.2
MONROE	618	1	1	1	4	27	93	257	183	51	0	3	0.5	34	5.5
NASSAU	681	1	2	3	17	21	126	261	199	51	0	6	0.9	44	6.5
OKALOOSA	2,301	1	10	16	38	103	373	925	664	171	0	27	1.2	168	7.3
ORKEECHOBEE	479	0	5	0	6	19	90	180	137	42	0	5	1.0	30	6.3
ORANGE	10,407	14	44	62	151	445	1,738	4,085	3,016	851	1	120	1.2	716	6.9
OSCEOLA	3,451	4	15	22	54	196	631	1,367	924	238	0	41	1.2	291	8.4
PALM BEACH	9,369	6	37	69	148	393	1,581	3,856	2,609	670	0	112	1.2	653	7.0
PASCO	4,268	10	18	37	74	234	768	1,616	1,151	360	0	65	1.5	373	8.7
PINELLAS	6,209	6	16	41	104	276	943	2,346	1,869	608	0	63	1.0	443	7.1
POLK	5,806	6	30	35	86	264	966	2,271	1,644	504	0	71	1.2	421	7.3
PUTNAM	623	0	4	9	11	38	120	246	149	46	0	13	2.1	62	10.0
SAINT JOHNS	1,856	5	10	8	19	77	288	680	584	185	0	23	1.2	119	6.4
SAINT LUCIE	1,978	0	5	15	29	81	312	804	557	175	0	20	1.0	130	6.6
SANTA ROSA	1,625	1	8	13	19	94	258	592	495	145	0	22	1.4	135	8.3
SARASOTA	2,564	0	9	11	34	103	392	954	790	271	0	20	0.8	157	6.1
SEMINOLE	3,451	2	18	23	42	150	528	1,327	1,040	321	0	43	1.2	235	6.8
SUMTER	395	1	1	1	14	27	84	140	100	27	0	3	0.8	44	11.1
SUWANNEE	363	3	0	5	7	13	73	138	91	33	0	8	2.2	28	7.7
TAYLOR	169	0	0	3	1	7	34	65	44	15	0	3	1.8	11	6.5
UNION	131	0	1	2	3	7	24	37	42	15	0	3	2.3	13	9.9
VOLUSIA	3,744	3	11	21	64	195	618	1,416	1,086	330	0	35	0.9	294	7.9
WAKULLA	299	0	2	3	3	14	39	116	87	35	0	5	1.7	22	7.4
WALTON	673	0	2	1	8	33	131	265	178	55	0	3	0.4	44	6.5
WASHINGTON	203	0	3	0	2	7	35	74	62	20	0	3	1.5	12	5.9

TABLE B-5 (Cont.): RESIDENT LIVE BIRTHS TO BLACK MOTHERS BY BIRTHWEIGHT, BY COUNTY, FLORIDA, 2014

	TOTAL	BIRTHWEIGHT IN GRAMS										LESS THAN 1500 GRAMS		LESS THAN 2500 GRAMS	
		<500	500- 999	1000- 1499	1500- 1999	2000- 2499	2500- 2999	3000- 3499	3500- 3999	4000+	UNK	NUMBER	%	NUMBER	%
FLORIDA	49,059	188	587	681	1,293	3,798	12,135	19,331	9,039	2,002	5	1,456	3.0	6,547	13.3
ALACHUA	889	7	11	21	37	72	241	315	137	48	0	39	4.4	148	16.6
BAKER	35	0	0	1	0	3	10	14	6	1	0	1	2.9	4	11.4
BAY	329	2	5	6	7	27	107	115	51	9	0	13	4.0	47	14.3
BRADFORD	52	1	1	1	0	2	12	23	7	5	0	3	5.8	5	9.6
BREVARD	792	8	5	6	22	64	198	321	131	37	0	19	2.4	105	13.3
BROWARD	8,498	26	127	115	223	628	2,010	3,383	1,618	366	2	268	3.2	1,119	13.2
CALHOUN	13	0	0	0	0	0	2	9	1	1	0	0	0.0	0	0.0
CHARLOTTE	81	0	0	0	0	5	24	33	15	4	0	0	0.0	5	6.2
CITRUS	37	1	0	2	1	1	6	14	11	1	0	3	8.1	5	13.5
CLAY	208	1	2	2	5	20	51	77	41	9	0	5	2.4	30	14.4
COLLIER	382	1	6	2	7	28	81	166	77	14	0	9	2.4	44	11.5
COLUMBIA	156	0	3	1	2	11	41	64	27	7	0	4	2.6	17	10.9
MIAMI-DADE	7,059	19	85	111	186	554	1,748	2,771	1,277	307	1	215	3.0	955	13.5
DESOTO	41	0	0	0	3	2	12	12	11	1	0	0	0.0	5	12.2
DIXIE	9	0	0	0	0	0	3	1	3	2	0	0	0.0	0	0.0
DUVAL	4,387	18	48	67	124	307	1,127	1,753	762	180	1	133	3.0	564	12.9
ESCAMBIA	1,183	5	17	19	33	120	294	462	196	37	0	41	3.5	194	16.4
FLAGLER	112	0	3	0	5	7	23	43	26	5	0	3	2.7	15	13.4
FRANKLIN	10	0	0	0	0	1	2	4	2	1	0	0	0.0	1	10.0
GADSDEN	331	0	5	1	3	53	97	113	47	12	0	6	1.8	62	18.7
GILCHRIST	10	0	0	0	0	1	1	6	1	1	0	0	0.0	1	10.0
GLADES	10	0	0	1	0	0	4	1	3	1	0	1	10.0	1	10.0
GULF	13	0	1	0	0	2	4	2	4	0	0	1	7.7	3	23.1
HAMILTON	47	0	0	0	0	4	17	15	10	1	0	0	0.0	4	8.5
HARDEE	20	0	0	0	0	1	6	5	8	0	0	0	0.0	1	5.0
HENDRY	61	0	0	2	3	4	15	26	10	1	0	2	3.3	9	14.8
HERNANDO	116	0	0	1	2	9	29	48	23	4	0	1	0.9	12	10.3
HIGHLANDS	152	1	1	2	2	10	49	58	21	8	0	4	2.6	16	10.5
HILLSBOROUGH	3,497	20	37	53	86	301	889	1,344	607	160	0	110	3.1	497	14.2
HOLMES	4	0	0	0	0	0	1	3	0	0	0	0	0.0	0	0.0
INDIAN RIVER	230	2	1	3	4	20	65	82	45	8	0	6	2.6	30	13.0
JACKSON	150	1	3	0	1	11	35	68	27	4	0	4	2.7	16	10.7
JEFFERSON	63	0	0	0	3	8	14	27	9	2	0	0	0.0	11	17.5
LAFAYETTE	5	0	0	0	0	0	1	4	0	0	0	0	0.0	0	0.0
LAKE	422	4	6	7	11	44	105	154	75	16	0	17	4.0	72	17.1
LEE	950	4	11	8	26	75	226	363	199	38	0	23	2.4	124	13.1
LEON	1,284	9	15	13	41	105	348	482	237	34	0	37	2.9	183	14.3
LEVY	43	0	2	1	1	5	10	15	8	1	0	3	7.0	9	20.9
LIBERTY	7	0	0	0	1	1	3	1	0	1	0	0	0.0	2	28.6
MADISON	86	0	2	1	2	11	20	32	16	2	0	3	3.5	16	18.6
MANATEE	455	2	1	7	11	36	118	176	89	15	0	10	2.2	57	12.5
MARION	633	7	10	9	18	50	163	252	108	16	0	26	4.1	94	14.8
MARTIN	108	1	0	0	3	9	29	36	24	6	0	1	0.9	13	12.0
MONROE	88	0	0	0	4	1	14	40	23	6	0	0	0.0	5	5.7
NASSAU	42	0	1	0	0	5	14	13	8	1	0	1	2.4	6	14.3
OKALOOSA	325	1	4	5	10	18	82	121	62	22	0	10	3.1	38	11.7
ORKEECHOBEE	30	0	0	0	0	3	7	13	7	0	0	0	0.0	3	10.0
ORANGE	4,399	19	46	54	99	351	1,043	1,749	844	193	1	119	2.7	569	12.9
OSCEOLA	466	0	11	9	16	27	123	178	88	14	0	20	4.3	63	13.5
PALM BEACH	4,187	8	41	61	114	276	991	1,759	791	146	0	110	2.6	500	11.9
PASCO	314	1	2	3	9	20	74	117	75	13	0	6	1.9	35	11.1
PINELLAS	1,483	2	22	22	42	117	377	580	268	53	0	46	3.1	205	13.8
POLK	1,495	5	22	19	47	110	351	590	284	67	0	46	3.1	203	13.6
PUTNAM	178	1	3	2	3	19	53	62	32	3	0	6	3.4	28	15.7
SAINT JOHNS	161	0	3	2	6	17	37	60	27	9	0	5	3.1	28	17.4
SAINT LUCIE	810	4	7	12	17	58	183	335	166	28	0	23	2.8	98	12.1
SANTA ROSA	89	0	0	0	1	8	22	35	17	6	0	0	0.0	9	10.1
SARASOTA	239	0	5	1	7	23	52	98	45	8	0	6	2.5	36	15.1
SEMINOLE	694	2	4	8	14	48	170	264	150	34	0	14	2.0	76	11.0
SUMTER	82	0	0	0	5	11	23	29	14	0	0	0	0.0	16	19.5
SUWANNEE	63	0	0	1	4	7	18	22	11	0	0	1	1.6	12	19.0
TAYLOR	45	0	0	0	1	5	11	16	9	3	0	0	0.0	6	13.3
UNION	21	0	0	1	1	3	5	8	3	0	0	1	4.8	5	23.8
VOLUSIA	780	4	7	17	20	53	215	311	127	26	0	28	3.6	101	12.9
WAKULLA	33	0	0	0	0	2	12	13	4	2	0	0	0.0	2	6.1
WALTON	30	0	0	1	0	3	7	12	6	1	0	1	3.3	4	13.3
WASHINGTON	30	1	1	0	0	1	6	12	8	1	0	2	6.7	3	10.0

TABLE B-5 (Cont.): RESIDENT LIVE BIRTHS TO OTHER MOTHERS BY BIRTHWEIGHT, BY COUNTY, FLORIDA, 2014

	TOTAL	BIRTHWEIGHT IN GRAMS										LESS THAN 1500 GRAMS		LESS THAN 2500 GRAMS	
		<500	500- 999	1000- 1499	1500- 1999	2000- 2499	2500- 2999	3000- 3499	3500- 3999	4000+	UNK	NUMBER	%	NUMBER	%
FLORIDA	12,712	13	68	98	174	708	2,701	5,252	2,966	732	0	179	1.4	1,061	8.3
ALACHUA	293	0	0	2	4	18	74	123	61	11	0	2	0.7	24	8.2
BAKER	12	0	1	0	1	0	0	5	5	0	0	1	8.3	2	16.7
BAY	176	0	1	1	2	14	28	71	50	9	0	2	1.1	18	10.2
BRADFORD	4	0	0	0	0	2	2	0	0	0	0	0	0.0	2	50.0
BREVARD	349	0	1	1	4	18	83	156	73	13	0	2	0.6	24	6.9
BROWARD	1,673	1	6	22	39	99	384	697	337	88	0	29	1.7	167	10.0
CALHOUN	1	0	0	0	0	0	0	0	1	0	0	0	0.0	0	0.0
CHARLOTTE	37	0	0	0	1	0	10	20	5	1	0	0	0.0	1	2.7
CITRUS	30	0	0	0	0	1	4	16	8	1	0	0	0.0	1	3.3
CLAY	123	0	1	2	4	10	20	51	27	8	0	3	2.4	17	13.8
COLLIER	155	0	3	1	2	6	26	59	46	12	0	4	2.6	12	7.7
COLUMBIA	23	0	0	0	0	2	4	9	7	1	0	0	0.0	2	8.7
MIAMI-DADE	831	1	3	5	8	53	186	363	165	47	0	9	1.1	70	8.4
DESOTO	8	0	0	0	1	0	1	5	0	1	0	0	0.0	1	12.5
DIXIE	2	0	0	0	0	0	1	1	0	0	0	0	0.0	0	0.0
DUVAL	1,111	1	7	10	14	57	209	457	285	71	0	18	1.6	89	8.0
ESCAMBIA	235	0	3	1	1	15	45	105	57	8	0	4	1.7	20	8.5
FLAGLER	56	0	0	0	1	3	6	27	16	3	0	0	0.0	4	7.1
FRANKLIN	0	0	0	0	0	0	0	0	0	0	0	0	0.0	0	0.0
GADSDEN	7	0	0	0	0	2	1	3	1	0	0	0	0.0	2	28.6
GILCHRIST	3	0	0	0	0	0	0	2	0	1	0	0	0.0	0	0.0
GLADES	4	0	0	0	0	0	0	4	0	0	0	0	0.0	0	0.0
GULF	7	0	0	0	0	0	0	3	4	0	0	0	0.0	0	0.0
HAMILTON	1	0	0	0	0	0	0	1	0	0	0	0	0.0	0	0.0
HARDEE	9	0	0	0	1	1	0	5	1	1	0	0	0.0	2	22.2
HENDRY	18	0	0	0	0	0	2	7	9	0	0	0	0.0	0	0.0
HERNANDO	78	0	0	1	1	3	13	34	20	6	0	1	1.3	5	6.4
HIGHLANDS	37	0	0	0	2	2	7	13	13	0	0	0	0.0	4	10.8
HILLSBOROUGH	1,058	4	7	6	16	55	225	455	235	55	0	17	1.6	88	8.3
HOLMES	8	0	0	0	0	2	2	1	2	1	0	0	0.0	2	25.0
INDIAN RIVER	39	0	0	0	0	3	8	18	6	4	0	0	0.0	3	7.7
JACKSON	15	0	0	0	1	2	5	3	4	0	0	0	0.0	3	20.0
JEFFERSON	2	0	0	0	0	0	1	1	0	0	0	0	0.0	0	0.0
LAFAYETTE	0	0	0	0	0	0	0	0	0	0	0	0	0.0	0	0.0
LAKE	192	1	1	1	7	10	49	76	29	18	0	3	1.6	20	10.4
LEE	190	0	0	2	1	14	46	73	38	16	0	2	1.1	17	8.9
LEON	185	1	2	2	8	10	35	74	43	10	0	5	2.7	23	12.4
LEVY	10	0	0	0	0	1	0	6	2	1	0	0	0.0	1	10.0
LIBERTY	1	0	0	0	0	0	1	0	0	0	0	0	0.0	0	0.0
MADISON	1	0	0	0	0	0	0	1	0	0	0	0	0.0	0	0.0
MANATEE	301	0	0	2	0	12	61	114	81	31	0	2	0.7	14	4.7
MARION	137	0	0	1	2	7	38	55	30	4	0	1	0.7	10	7.3
MARTIN	51	0	1	0	0	1	11	19	14	5	0	1	2.0	2	3.9
MONROE	43	0	2	0	1	1	10	17	8	4	0	2	4.7	4	9.3
NASSAU	20	0	0	0	0	1	2	10	4	3	0	0	0.0	1	5.0
OKALOOSA	192	0	2	1	3	12	31	84	52	7	0	3	1.6	18	9.4
ORKEECHOBEE	27	0	1	1	0	0	5	11	4	5	0	2	7.4	2	7.4
ORANGE	1,404	3	10	15	12	71	323	561	331	78	0	28	2.0	111	7.9
OSCEOLA	270	0	1	2	2	18	59	104	70	14	0	3	1.1	23	8.5
PALM BEACH	855	0	2	7	7	48	189	341	219	42	0	9	1.1	64	7.5
PASCO	221	0	0	2	1	16	37	100	43	22	0	2	0.9	19	8.6
PINELLAS	678	0	4	1	7	31	163	273	163	36	0	5	0.7	43	6.3
POLK	302	1	2	1	4	19	61	121	74	19	0	4	1.3	27	8.9
PUTNAM	30	0	0	0	0	3	7	10	8	2	0	0	0.0	3	10.0
SAINT JOHNS	128	0	1	0	1	11	21	54	35	5	0	1	0.8	13	10.2
SAINT LUCIE	156	0	2	0	2	4	34	68	37	9	0	2	1.3	8	5.1
SANTA ROSA	105	0	0	0	1	10	19	33	33	9	0	0	0.0	11	10.5
SARASOTA	138	0	0	2	4	2	30	60	30	10	0	2	1.4	8	5.8
SEMINOLE	364	0	1	4	4	19	66	153	95	22	0	5	1.4	28	7.7
SUMTER	15	0	0	0	0	1	3	7	4	0	0	0	0.0	1	6.7
SUWANNEE	14	0	0	0	0	0	6	5	3	0	0	0	0.0	0	0.0
TAYLOR	3	0	0	0	0	0	1	0	2	0	0	0	0.0	0	0.0
UNION	2	0	0	0	0	0	1	0	1	0	0	0	0.0	0	0.0
VOLUSIA	239	0	3	1	4	14	36	96	69	16	0	4	1.7	22	9.2
WAKULLA	3	0	0	0	0	0	1	0	1	1	0	0	0.0	0	0.0
WALTON	21	0	0	1	0	2	7	5	5	1	0	1	4.8	3	14.3
WASHINGTON	8	0	0	0	0	2	1	5	0	0	0	0	0.0	2	25.0

TABLE B-6: RESIDENT LIVE BIRTHS BY AGE OF MOTHER, BY COUNTY, FLORIDA, 2014

	TOTAL	<13	13	14	15	16	17	18	19	20-24	25-29	30-34	35-44	45+	UNK
FLORIDA	219,905	5	15	122	386	958	1,862	3,590	6,015	49,803	64,070	57,620	34,953	471	8
ALACHUA	2,916	0	0	0	4	8	21	35	79	600	916	840	408	5	0
BAKER	365	0	0	0	0	3	6	22	19	121	105	60	29	0	0
BAY	2,328	0	0	1	4	23	29	43	80	709	717	496	224	2	0
BRADFORD	282	0	0	1	1	2	0	12	16	99	78	57	16	0	0
BREVARD	5,259	0	0	3	11	14	34	84	140	1,202	1,674	1,337	750	10	0
BROWARD	22,213	0	1	5	26	58	116	253	453	3,852	6,103	6,653	4,624	67	1
CALHOUN	131	0	0	0	0	5	4	6	7	38	41	20	10	0	0
CHARLOTTE	1,007	0	0	0	4	7	14	20	30	300	299	220	112	1	0
CITRUS	1,016	0	0	0	1	9	11	24	44	364	296	178	89	0	0
CLAY	2,083	0	0	0	4	7	22	38	64	531	666	474	274	3	0
COLLIER	3,288	0	0	0	5	10	35	46	93	634	926	922	604	13	0
COLUMBIA	832	0	0	0	4	10	10	29	43	285	240	136	74	1	0
MIAMI-DADE	31,990	1	1	10	39	90	211	360	618	6,027	8,912	9,076	6,540	102	2
DESOTO	384	0	0	0	2	6	4	13	24	121	121	62	30	0	0
DIXIE	169	0	0	0	1	3	2	2	5	56	57	36	7	0	0
DUVAL	12,514	0	2	10	26	46	112	218	376	3,141	3,893	3,132	1,528	28	1
ESCAMBIA	3,880	0	1	4	10	34	36	88	144	1,154	1,186	826	392	5	0
FLAGLER	833	0	0	0	2	3	13	13	25	199	244	206	123	5	0
FRANKLIN	100	0	0	0	0	1	5	2	6	43	31	10	2	0	0
GADSDEN	535	0	1	0	2	1	7	12	23	172	148	99	70	0	0
GILCHRIST	167	0	0	0	1	2	0	3	12	61	49	29	10	0	0
GLADES	60	0	0	0	0	4	1	1	4	18	17	9	6	0	0
GULF	117	0	0	0	0	0	1	2	8	46	29	17	13	1	0
HAMILTON	145	0	0	1	0	2	0	5	6	55	44	17	15	0	0
HARDEE	414	0	0	1	1	5	12	15	27	138	116	67	32	0	0
HENDRY	569	0	0	0	3	3	5	19	26	171	177	106	55	3	0
HERNANDO	1,488	0	0	0	2	5	15	26	43	429	456	332	178	2	0
HIGHLANDS	937	0	0	0	0	8	16	24	42	279	302	170	94	1	0
HILLSBOROUGH	16,846	0	0	17	31	72	185	314	455	3,930	4,788	4,510	2,491	41	1
HOLMES	207	0	0	1	0	1	6	8	14	64	51	43	19	0	0
INDIAN RIVER	1,282	0	0	0	4	3	12	17	45	340	370	300	190	1	0
JACKSON	514	0	0	0	1	5	11	9	25	185	149	91	38	0	0
JEFFERSON	127	0	0	0	0	0	0	1	3	38	45	22	18	0	0
LAFAYETTE	76	0	0	0	0	0	3	0	3	26	24	15	5	0	0
LAKE	3,166	0	0	1	4	15	34	90	95	868	939	722	393	3	1
LEE	6,352	1	0	3	17	23	77	130	188	1,492	1,859	1,610	944	7	1
LEON	3,085	0	1	4	6	16	17	53	93	716	877	843	453	6	0
LEVY	409	0	1	0	1	5	4	11	12	140	113	92	30	0	0
LIBERTY	92	0	0	0	0	2	1	3	1	37	21	17	10	0	0
MADISON	191	0	0	0	0	0	1	2	7	60	65	35	21	0	0
MANATEE	3,545	0	1	4	13	22	40	94	131	881	978	905	469	4	0
MARION	3,417	0	0	6	14	22	48	82	106	1,023	1,053	691	366	6	0
MARTIN	1,263	1	0	1	5	5	9	26	34	246	376	346	213	1	0
MONROE	749	0	0	1	0	3	6	3	19	147	230	200	139	1	0
NASSAU	745	0	0	0	0	2	10	12	22	201	244	174	79	1	0
OKALOOSA	2,827	0	1	1	4	12	17	45	69	715	974	662	322	5	0
OKEECHOBEE	553	0	0	1	2	2	15	16	22	184	181	85	45	0	0
ORANGE	16,221	0	2	7	23	79	121	225	436	3,410	4,577	4,517	2,793	29	0
OSCEOLA	4,195	0	1	4	6	26	36	93	164	1,020	1,259	971	603	12	0
PALM BEACH	14,433	2	1	11	23	52	81	172	332	2,674	3,883	4,174	2,988	40	0
PASCO	4,826	0	0	2	5	28	37	75	145	1,149	1,417	1,237	725	5	0
PINELLAS	8,519	0	1	7	19	38	77	125	209	1,951	2,546	2,272	1,253	21	0
POLK	7,608	0	0	4	21	52	86	187	301	2,191	2,322	1,635	798	8	0
PUTNAM	831	0	0	1	4	8	14	28	42	283	241	131	78	1	0
SAINT JOHNS	2,148	0	0	0	1	4	7	28	30	302	640	733	396	7	0
SAINT LUCIE	2,969	0	0	1	2	13	18	62	74	731	896	759	409	4	0
SANTA ROSA	1,822	0	0	1	4	6	15	30	51	420	609	468	215	3	0
SARASOTA	2,955	0	0	2	8	16	27	42	78	609	876	812	481	3	1
SEMINOLE	4,515	0	0	4	3	13	24	38	95	835	1,336	1,342	816	9	0
SUMTER	494	0	0	0	2	2	5	13	26	184	133	86	42	1	0
SUWANNEE	440	0	0	1	3	2	10	8	25	142	141	72	36	0	0
TAYLOR	217	0	0	0	0	2	5	7	8	82	68	32	13	0	0
UNION	154	0	0	0	0	1	2	2	7	49	52	28	13	0	0
VOLUSIA	4,767	0	0	1	6	31	43	90	143	1,270	1,470	1,111	599	3	0
WAKULLA	335	0	0	0	1	0	2	11	12	87	115	76	31	0	0
WALTON	725	0	0	0	0	4	8	17	18	176	244	171	87	0	0
WASHINGTON	243	0	0	0	0	2	4	6	18	96	61	37	19	0	0

TABLE B-6 (Cont.): RESIDENT LIVE BIRTHS TO WHITE MOTHERS, BY AGE OF MOTHER,
BY COUNTY, FLORIDA, 2014

	TOTAL	<13	13	14	15	16	17	18	19	20-24	25-29	30-34	35-44	45+	UNK
FLORIDA	156,999	3	7	67	210	593	1,192	2,304	3,889	33,135	46,616	43,116	25,503	335	5
ALACHUA	1,730	0	0	0	0	3	7	16	31	268	556	567	279	3	0
BAKER	318	0	0	0	0	3	5	21	16	107	93	53	20	0	0
BAY	1,777	0	0	1	2	19	19	34	59	524	555	388	175	1	0
BRADFORD	226	0	0	1	1	2	0	8	14	80	60	50	10	0	0
BREVARD	4,111	0	0	0	8	7	26	60	99	881	1,350	1,070	602	8	0
BROWARD	11,947	0	1	2	9	17	34	99	169	1,661	3,327	3,895	2,695	37	0
CALHOUN	117	0	0	0	0	4	4	5	7	32	39	17	9	0	0
CHARLOTTE	889	0	0	0	2	7	11	17	26	270	268	196	91	1	0
CITRUS	948	0	0	0	1	8	10	22	42	343	278	162	82	0	0
CLAY	1,741	0	0	0	4	5	17	36	57	444	566	400	210	2	0
COLLIER	2,749	0	0	0	4	9	33	38	84	539	805	773	457	7	0
COLUMBIA	653	0	0	0	3	7	8	19	33	227	191	109	56	0	0
MIAMI-DADE	23,765	0	1	4	19	52	120	204	376	3,934	6,681	7,129	5,162	81	1
DESOTO	334	0	0	0	1	5	3	12	21	102	107	57	26	0	0
DIXIE	158	0	0	0	1	3	2	2	4	53	52	34	7	0	0
DUVAL	6,992	0	0	0	6	11	47	83	156	1,511	2,293	1,942	927	15	0
ESCAMBIA	2,461	0	0	1	5	21	22	47	68	648	798	571	276	4	0
FLAGLER	661	0	0	0	0	2	7	9	16	150	202	170	100	5	0
FRANKLIN	90	0	0	0	0	1	5	2	5	40	25	10	2	0	0
GADSDEN	197	0	0	0	0	0	1	2	4	54	59	44	33	0	0
GILCHRIST	154	0	0	0	1	2	0	3	11	53	48	26	10	0	0
GLADES	46	0	0	0	0	3	1	1	2	16	12	6	5	0	0
GULF	97	0	0	0	0	0	0	2	8	39	24	15	8	1	0
HAMILTON	97	0	0	0	0	1	0	2	4	36	28	13	13	0	0
HARDEE	385	0	0	0	1	5	12	14	26	124	108	66	29	0	0
HENDRY	490	0	0	0	3	3	5	15	24	141	157	89	49	3	0
HERNANDO	1,290	0	0	0	1	3	13	24	37	375	400	288	147	2	0
HIGHLANDS	745	0	0	0	0	6	15	14	34	213	241	146	74	1	0
HILLSBOROUGH	12,268	0	0	15	23	50	118	200	307	2,641	3,495	3,475	1,897	36	1
HOLMES	195	0	0	1	0	0	6	8	13	64	45	40	18	0	0
INDIAN RIVER	790	0	0	0	1	1	7	9	29	195	222	200	126	0	0
JACKSON	348	0	0	0	1	3	8	4	19	123	91	67	32	0	0
JEFFERSON	62	0	0	0	0	0	0	1	1	16	19	16	9	0	0
LAFAYETTE	71	0	0	0	0	0	3	0	2	22	24	15	5	0	0
LAKE	2,550	0	0	1	3	12	21	68	72	679	774	597	318	3	1
LEE	5,194	0	0	3	11	14	60	94	142	1,188	1,535	1,376	763	7	1
LEON	1,616	0	0	0	1	4	5	15	43	240	476	548	281	3	0
LEVY	355	0	1	0	1	3	4	11	7	118	102	82	26	0	0
LIBERTY	84	0	0	0	0	0	1	3	1	36	19	16	8	0	0
MADISON	104	0	0	0	0	0	0	0	3	28	39	21	13	0	0
MANATEE	2,773	0	1	3	8	19	27	67	92	646	784	736	384	3	0
MARION	2,646	0	0	5	11	17	34	65	85	790	788	556	290	5	0
MARTIN	1,098	1	0	1	4	5	7	24	26	207	331	305	186	1	0
MONROE	618	0	0	1	0	2	5	2	13	120	194	166	115	0	0
NASSAU	681	0	0	0	0	2	8	10	21	185	227	154	73	1	0
OKALOOSA	2,301	0	1	1	3	10	13	37	60	562	791	561	258	4	0
OKEECHOBEE	479	0	0	1	2	2	13	13	21	156	161	72	38	0	0
ORANGE	10,407	0	0	2	8	45	67	126	251	1,986	3,020	3,047	1,836	18	0
OSCEOLA	3,451	0	1	2	4	21	30	82	145	870	1,044	791	452	9	0
PALM BEACH	9,369	2	0	5	11	28	55	107	165	1,503	2,576	2,899	1,996	22	0
PASCO	4,268	0	0	2	3	24	32	66	132	1,040	1,266	1,084	613	5	0
PINELLAS	6,209	0	1	3	10	20	46	67	127	1,247	1,879	1,800	993	16	0
POLK	5,806	0	0	3	16	37	63	135	219	1,638	1,773	1,323	589	7	0
PUTNAM	623	0	0	1	1	4	12	19	32	214	178	102	60	0	0
SAINT JOHNS	1,856	0	0	0	1	3	5	19	22	219	573	666	343	5	0
SAINT LUCIE	1,978	0	0	1	1	8	10	32	41	486	593	536	267	3	0
SANTA ROSA	1,625	0	0	0	3	3	13	26	45	375	546	425	186	3	0
SARASOTA	2,564	0	0	2	3	11	22	35	66	500	780	719	422	3	1
SEMINOLE	3,451	0	0	3	2	7	9	25	61	573	1,041	1,065	659	6	0
SUMTER	395	0	0	0	0	1	4	11	21	138	109	72	38	1	0
SUWANNEE	363	0	0	1	3	2	10	5	21	113	119	60	29	0	0
TAYLOR	169	0	0	0	0	2	4	6	6	65	51	26	9	0	0
UNION	131	0	0	0	0	1	1	2	7	39	47	25	9	0	0
VOLUSIA	3,744	0	0	1	3	18	27	67	100	934	1,187	921	483	3	0
WAKULLA	299	0	0	0	0	0	2	10	10	75	106	67	29	0	0
WALTON	673	0	0	0	0	3	8	16	15	158	232	164	77	0	0
WASHINGTON	203	0	0	0	0	2	4	6	13	79	53	30	16	0	0

TABLE B-6 (Cont.): RESIDENT LIVE BIRTHS TO BLACK MOTHERS, BY AGE OF MOTHER,
BY COUNTY, FLORIDA, 2014

	TOTAL	<13	13	14	15	16	17	18	19	20-24	25-29	30-34	35-44	45+	UNK
FLORIDA	49,059	2	7	51	153	318	582	1,133	1,875	14,519	13,630	10,097	6,596	94	1
ALACHUA	889	0	0	0	3	4	12	19	43	310	260	167	70	1	0
BAKER	35	0	0	0	0	0	0	0	2	12	7	6	8	0	0
BAY	329	0	0	0	1	2	6	5	15	125	99	53	22	1	0
BRADFORD	52	0	0	0	0	0	0	4	2	18	17	5	6	0	0
BREVARD	792	0	0	3	3	5	7	20	28	241	225	170	89	1	0
BROWARD	8,498	0	0	3	16	39	78	138	266	1,993	2,275	2,123	1,543	24	0
CALHOUN	13	0	0	0	0	1	0	1	0	5	2	3	1	0	0
CHARLOTTE	81	0	0	0	0	0	2	3	3	24	23	14	12	0	0
CITRUS	37	0	0	0	0	0	0	1	1	15	9	9	2	0	0
CLAY	208	0	0	0	0	1	3	2	4	63	69	38	27	1	0
COLLIER	382	0	0	0	0	1	2	8	8	78	82	99	99	5	0
COLUMBIA	156	0	0	0	1	3	2	10	10	54	42	20	13	1	0
MIAMI-DADE	7,059	1	0	6	19	37	84	149	233	1,970	1,929	1,554	1,060	17	0
DESOTO	41	0	0	0	1	1	1	1	3	16	11	4	3	0	0
DIXIE	9	0	0	0	0	0	0	0	1	3	4	1	0	0	0
DUVAL	4,387	0	2	9	19	34	55	118	194	1,427	1,291	818	411	8	1
ESCAMBIA	1,183	0	0	3	5	11	13	37	70	452	312	192	88	0	0
FLAGLER	112	0	0	0	1	0	4	4	6	38	25	19	15	0	0
FRANKLIN	10	0	0	0	0	0	0	0	1	3	6	0	0	0	0
GADSDEN	331	0	1	0	2	1	6	10	19	116	88	53	35	0	0
GILCHRIST	10	0	0	0	0	0	0	0	1	8	1	0	0	0	0
GLADES	10	0	0	0	0	0	0	0	1	2	4	2	1	0	0
GULF	13	0	0	0	0	0	1	0	0	6	1	1	4	0	0
HAMILTON	47	0	0	1	0	1	0	3	2	19	15	4	2	0	0
HARDEE	20	0	0	1	0	0	0	1	1	8	7	0	2	0	0
HENDRY	61	0	0	0	0	0	0	3	1	23	19	12	3	0	0
HERNANDO	116	0	0	0	0	1	1	2	5	37	35	21	14	0	0
HIGHLANDS	152	0	0	0	0	2	1	9	7	57	48	17	11	0	0
HILLSBOROUGH	3,497	0	0	2	8	21	66	100	133	1,154	1,015	626	368	4	0
HOLMES	4	0	0	0	0	1	0	0	1	0	2	0	0	0	0
INDIAN RIVER	230	0	0	0	2	2	0	3	9	80	76	33	24	1	0
JACKSON	150	0	0	0	0	2	2	3	5	56	54	22	6	0	0
JEFFERSON	63	0	0	0	0	0	0	0	2	21	25	6	9	0	0
LAFAYETTE	5	0	0	0	0	0	0	0	1	4	0	0	0	0	0
LAKE	422	0	0	0	1	3	11	18	19	152	119	63	36	0	0
LEE	950	1	0	0	6	8	16	32	44	271	257	174	141	0	0
LEON	1,284	0	1	4	5	10	10	34	48	446	343	245	137	1	0
LEVY	43	0	0	0	0	1	0	0	2	19	9	9	3	0	0
LIBERTY	7	0	0	0	0	2	0	0	0	1	2	1	1	0	0
MADISON	86	0	0	0	0	0	1	2	4	31	26	14	8	0	0
MANATEE	455	0	0	1	4	2	7	17	28	162	118	82	33	1	0
MARION	633	0	0	1	3	5	12	15	18	201	222	101	55	0	0
MARTIN	108	0	0	0	1	0	0	1	6	33	32	20	15	0	0
MONROE	88	0	0	0	0	1	1	1	5	18	21	19	21	1	0
NASSAU	42	0	0	0	0	0	0	2	1	11	11	12	5	0	0
OKALOOSA	325	0	0	0	1	1	3	6	7	102	113	57	35	0	0
OKEECHOBEE	30	0	0	0	0	0	1	1	0	14	8	6	0	0	0
ORANGE	4,399	0	2	4	14	33	51	90	161	1,232	1,171	978	656	6	0
OSCEOLA	466	0	0	2	2	5	6	10	14	116	117	102	90	2	0
PALM BEACH	4,187	0	1	6	12	21	26	62	161	1,072	1,093	966	755	12	0
PASCO	314	0	0	0	1	4	3	8	10	72	91	81	44	0	0
PINELLAS	1,483	0	0	3	4	15	21	50	67	562	416	232	111	2	0
POLK	1,495	0	0	1	5	12	21	45	64	494	464	235	154	0	0
PUTNAM	178	0	0	0	3	2	2	7	10	60	54	24	15	1	0
SAINT JOHNS	161	0	0	0	0	0	2	8	6	65	34	29	17	0	0
SAINT LUCIE	810	0	0	0	1	5	6	26	30	212	246	180	103	1	0
SANTA ROSA	89	0	0	0	0	1	1	1	2	23	32	20	9	0	0
SARASOTA	239	0	0	0	3	3	5	5	9	91	58	37	28	0	0
SEMINOLE	694	0	0	1	0	5	11	13	25	203	206	151	76	3	0
SUMTER	82	0	0	0	2	1	1	1	5	42	16	11	3	0	0
SUWANNEE	63	0	0	0	0	0	0	2	4	23	17	11	6	0	0
TAYLOR	45	0	0	0	0	0	1	0	2	15	17	6	4	0	0
UNION	21	0	0	0	0	0	1	0	0	9	5	3	3	0	0
VOLUSIA	780	0	0	0	3	7	15	20	37	291	213	119	75	0	0
WAKULLA	33	0	0	0	1	0	0	1	2	12	8	8	1	0	0
WALTON	30	0	0	0	0	1	0	1	3	10	6	4	5	0	0
WASHINGTON	30	0	0	0	0	0	0	0	3	14	7	4	2	0	0

TABLE B-6 (Cont.): RESIDENT LIVE BIRTHS TO OTHER MOTHERS, BY AGE OF MOTHER,
BY COUNTY, FLORIDA, 2014

	TOTAL	<13	13	14	15	16	17	18	19	20-24	25-29	30-34	35-44	45+	UNK
FLORIDA	12,712	0	1	4	18	44	71	132	237	1,931	3,530	4,088	2,618	36	0
ALACHUA	293	0	0	0	1	1	2	0	5	21	97	106	59	1	0
BAKER	12	0	0	0	0	0	1	1	1	2	5	1	1	0	0
BAY	176	0	0	0	0	2	3	1	5	47	53	45	20	0	0
BRADFORD	4	0	0	0	0	0	0	0	0	1	1	2	0	0	0
BREVARD	349	0	0	0	0	2	1	3	13	80	96	95	58	1	0
BROWARD	1,673	0	0	0	1	2	4	13	18	181	475	611	362	6	0
CALHOUN	1	0	0	0	0	0	0	0	0	1	0	0	0	0	0
CHARLOTTE	37	0	0	0	2	0	1	0	1	6	8	10	9	0	0
CITRUS	30	0	0	0	0	1	1	1	1	6	8	7	5	0	0
CLAY	123	0	0	0	0	1	2	0	3	24	29	31	33	0	0
COLLIER	155	0	0	0	1	0	0	0	1	17	38	50	47	1	0
COLUMBIA	23	0	0	0	0	0	0	0	0	4	7	7	5	0	0
MIAMI-DADE	831	0	0	0	0	0	2	4	8	90	221	276	227	3	0
DESOTO	8	0	0	0	0	0	0	0	0	2	3	1	1	0	0
DIXIE	2	0	0	0	0	0	0	0	0	0	1	1	0	0	0
DUVAL	1,111	0	0	1	1	1	10	17	26	200	301	366	183	5	0
ESCAMBIA	235	0	1	0	0	2	1	4	6	54	76	63	27	1	0
FLAGLER	56	0	0	0	1	1	2	0	3	11	16	15	7	0	0
FRANKLIN	0	0	0	0	0	0	0	0	0	0	0	0	0	0	0
GADSDEN	7	0	0	0	0	0	0	0	0	2	1	2	2	0	0
GILCHRIST	3	0	0	0	0	0	0	0	0	0	0	3	0	0	0
GLADES	4	0	0	0	0	1	0	0	1	0	1	1	0	0	0
GULF	7	0	0	0	0	0	0	0	0	1	4	1	1	0	0
HAMILTON	1	0	0	0	0	0	0	0	0	0	1	0	0	0	0
HARDEE	9	0	0	0	0	0	0	0	0	6	1	1	1	0	0
HENDRY	18	0	0	0	0	0	0	1	1	7	1	5	3	0	0
HERNANDO	78	0	0	0	1	1	1	0	1	17	20	22	15	0	0
HIGHLANDS	37	0	0	0	0	0	0	1	0	8	13	6	9	0	0
HILLSBOROUGH	1,058	0	0	0	0	0	1	13	14	128	274	404	222	1	0
HOLMES	8	0	0	0	0	0	0	0	0	0	4	3	1	0	0
INDIAN RIVER	39	0	0	0	1	0	0	0	2	5	9	13	9	0	0
JACKSON	15	0	0	0	0	0	1	2	1	6	3	2	0	0	0
JEFFERSON	2	0	0	0	0	0	0	0	0	1	1	0	0	0	0
LAFAYETTE	0	0	0	0	0	0	0	0	0	0	0	0	0	0	0
LAKE	192	0	0	0	0	0	2	4	4	36	45	62	39	0	0
LEE	190	0	0	0	0	1	1	4	2	26	63	56	37	0	0
LEON	185	0	0	0	0	2	2	4	2	30	58	50	35	2	0
LEVY	10	0	0	0	0	1	0	0	3	3	1	1	1	0	0
LIBERTY	1	0	0	0	0	0	0	0	0	0	0	0	1	0	0
MADISON	1	0	0	0	0	0	0	0	0	1	0	0	0	0	0
MANATEE	301	0	0	0	0	1	6	9	11	71	75	80	48	0	0
MARION	137	0	0	0	0	0	2	2	3	32	43	33	21	1	0
MARTIN	51	0	0	0	0	0	0	1	2	6	13	19	10	0	0
MONROE	43	0	0	0	0	0	0	0	1	9	15	15	3	0	0
NASSAU	20	0	0	0	0	0	2	0	0	5	5	7	1	0	0
OKALOOSA	192	0	0	0	0	1	1	2	2	46	69	44	27	0	0
OKEECHOBEE	27	0	0	0	0	0	0	2	1	6	8	4	6	0	0
ORANGE	1,404	0	0	1	1	1	3	9	24	189	380	491	300	5	0
OSCEOLA	270	0	0	0	0	0	0	1	5	31	98	76	59	0	0
PALM BEACH	855	0	0	0	0	3	0	3	6	91	212	301	233	6	0
PASCO	221	0	0	0	1	0	2	1	3	33	52	67	62	0	0
PINELLAS	678	0	0	1	4	3	7	6	12	118	212	193	121	1	0
POLK	302	0	0	0	0	3	2	7	18	58	83	77	54	0	0
PUTNAM	30	0	0	0	0	2	0	2	0	9	9	5	3	0	0
SAINT JOHNS	128	0	0	0	0	1	0	1	2	18	30	38	36	2	0
SAINT LUCIE	156	0	0	0	0	0	2	4	2	26	49	36	37	0	0
SANTA ROSA	105	0	0	1	1	2	1	2	4	20	31	23	20	0	0
SARASOTA	138	0	0	0	1	2	0	1	3	17	34	52	28	0	0
SEMINOLE	364	0	0	0	1	1	4	0	9	55	88	126	80	0	0
SUMTER	15	0	0	0	0	0	0	1	0	2	8	3	1	0	0
SUWANNEE	14	0	0	0	0	0	0	1	0	6	5	1	1	0	0
TAYLOR	3	0	0	0	0	0	0	1	0	2	0	0	0	0	0
UNION	2	0	0	0	0	0	0	0	0	1	0	0	1	0	0
VOLUSIA	239	0	0	0	0	5	1	3	6	45	68	71	40	0	0
WAKULLA	3	0	0	0	0	0	0	0	0	0	1	1	1	0	0
WALTON	21	0	0	0	0	0	0	0	0	8	6	3	4	0	0
WASHINGTON	8	0	0	0	0	0	0	0	1	3	0	3	1	0	0

TABLE B-7: RESIDENT LIVE BIRTHS AND PERCENT BY TRIMESTER PRENATAL CARE BEGAN, BY COUNTY, FLORIDA, 2014

	TRIMESTER PRENATAL CARE BEGAN ¹						% CARE BEGAN BY TRIMESTER ²			
	TOTAL	1ST	2ND	3RD	NONE	UNK	1ST	2ND	3RD	NONE
FLORIDA	219,905	160,186	31,005	7,699	2,912	18,103	79.4	15.4	3.8	1.4
ALACHUA	2,916	2,124	433	120	20	219	78.8	16.1	4.4	0.7
BAKER	365	250	67	13	9	26	73.7	19.8	3.8	2.7
BAY	2,328	1,450	391	105	8	374	74.2	20.0	5.4	0.4
BRADFORD	282	177	56	24	3	22	68.1	21.5	9.2	1.2
BREVARD	5,259	4,178	629	119	58	275	83.8	12.6	2.4	1.2
BROWARD	22,213	15,282	3,464	991	420	2,056	75.8	17.2	4.9	2.1
CALHOUN	131	88	21	1	1	20	79.3	18.9	0.9	0.9
CHARLOTTE	1,007	678	195	54	12	68	72.2	20.8	5.8	1.3
CITRUS	1,016	701	201	55	15	44	72.1	20.7	5.7	1.5
CLAY	2,083	1,579	292	53	38	121	80.5	14.9	2.7	1.9
COLLIER	3,288	2,111	740	231	25	181	67.9	23.8	7.4	0.8
COLUMBIA	832	520	176	44	12	80	69.1	23.4	5.9	1.6
MIAMI-DADE	31,990	25,565	2,941	682	295	2,507	86.7	10.0	2.3	1.0
DESOTO	384	227	88	32	3	34	64.9	25.1	9.1	0.9
DIXIE	169	96	40	10	7	16	62.7	26.1	6.5	4.6
DUVAL	12,514	8,127	2,573	607	294	913	70.1	22.2	5.2	2.5
ESCAMBIA	3,880	2,610	578	179	52	461	76.3	16.9	5.2	1.5
FLAGLER	833	625	102	11	6	89	84.0	13.7	1.5	0.8
FRANKLIN	100	63	15	1	1	20	78.8	18.8	1.3	1.3
GADSDEN	535	286	78	23	11	137	71.9	19.6	5.8	2.8
GILCHRIST	167	114	36	5	2	10	72.6	22.9	3.2	1.3
GLADES	60	39	10	5	0	6	72.2	18.5	9.3	0.0
GULF	117	70	20	5	1	21	72.9	20.8	5.2	1.0
HAMILTON	145	80	34	15	5	11	59.7	25.4	11.2	3.7
HARDEE	414	224	127	34	5	24	57.4	32.6	8.7	1.3
HENDRY	569	370	118	34	12	35	69.3	22.1	6.4	2.2
HERNANDO	1,488	1,196	136	23	18	115	87.1	9.9	1.7	1.3
HIGHLANDS	937	541	287	79	10	20	59.0	31.3	8.6	1.1
HILLSBOROUGH	16,846	14,962	1,278	188	125	293	90.4	7.7	1.1	0.8
HOLMES	207	151	23	11	2	20	80.7	12.3	5.9	1.1
INDIAN RIVER	1,282	822	335	74	13	38	66.1	26.9	5.9	1.0
JACKSON	514	408	56	19	2	29	84.1	11.5	3.9	0.4
JEFFERSON	127	74	16	7	2	28	74.7	16.2	7.1	2.0
LAFAYETTE	76	51	10	8	1	6	72.9	14.3	11.4	1.4
LAKE	3,166	2,447	322	71	34	292	85.1	11.2	2.5	1.2
LEE	6,352	4,299	1,346	346	61	300	71.0	22.2	5.7	1.0
LEON	3,085	1,898	351	108	23	705	79.7	14.7	4.5	1.0
LEVY	409	269	86	14	6	34	71.7	22.9	3.7	1.6
LIBERTY	92	60	9	4	2	17	80.0	12.0	5.3	2.7
MADISON	191	100	26	11	3	51	71.4	18.6	7.9	2.1
MANATEE	3,545	2,537	666	193	41	108	73.8	19.4	5.6	1.2
MARION	3,417	2,002	859	227	69	260	63.4	27.2	7.2	2.2
MARTIN	1,263	878	262	72	12	39	71.7	21.4	5.9	1.0
MONROE	749	588	86	23	16	36	82.5	12.1	3.2	2.2
NASSAU	745	606	71	17	5	46	86.7	10.2	2.4	0.7
OKALOOSA	2,827	1,978	409	167	23	250	76.8	15.9	6.5	0.9
OKEECHOBEE	553	358	124	33	12	26	67.9	23.5	6.3	2.3
ORANGE	16,221	11,540	1,632	295	286	2,468	83.9	11.9	2.1	2.1
OSCEOLA	4,195	3,021	467	90	68	549	82.9	12.8	2.5	1.9
PALM BEACH	14,433	10,028	2,186	867	159	1,193	75.7	16.5	6.5	1.2
PASCO	4,826	3,830	646	85	53	212	83.0	14.0	1.8	1.1
PINELLAS	8,519	6,186	1,352	266	91	624	78.4	17.1	3.4	1.2
POLK	7,608	5,236	1,368	236	118	650	75.3	19.7	3.4	1.7
PUTNAM	831	579	141	27	15	69	76.0	18.5	3.5	2.0
SAINT JOHNS	2,148	1,718	253	46	12	119	84.7	12.5	2.3	0.6
SAINT LUCIE	2,969	2,064	575	131	86	113	72.3	20.1	4.6	3.0
SANTA ROSA	1,822	1,319	269	83	9	142	78.5	16.0	4.9	0.5
SARASOTA	2,955	2,226	455	92	34	148	79.3	16.2	3.3	1.2
SEMINOLE	4,515	3,385	477	93	51	509	84.5	11.9	2.3	1.3
SUMTER	494	391	54	9	5	35	85.2	11.8	2.0	1.1
SUWANNEE	440	280	84	30	8	38	69.7	20.9	7.5	2.0
TAYLOR	217	125	31	7	1	53	76.2	18.9	4.3	0.6
UNION	154	106	25	5	3	15	76.3	18.0	3.6	2.2
VOLUSIA	4,767	3,399	669	128	99	472	79.1	15.6	3.0	2.3
WAKULLA	335	212	27	15	2	79	82.8	10.5	5.9	0.8
WALTON	725	519	81	35	6	84	81.0	12.6	5.5	0.9
WASHINGTON	243	159	28	10	4	42	79.1	13.9	5.0	2.0

1. Starting in 2004, "trimester prenatal care began" is calculated as the time elapsed from the date of the last menstrual period to the date of the first prenatal care visit. Prior to 2004, these data were obtained by direct question that noted the trimester the mother began prenatal care. Consequently, these data are not comparable to data from prior years.

2. Births with unknown information as to when prenatal care began are excluded from the denominator.

TABLE B-7 (Cont.): RESIDENT LIVE BIRTHS AND PERCENT TO WHITE MOTHERS
BY TRIMESTER PRENATAL CARE BEGAN, BY COUNTY, FLORIDA, 2014

	TRIMESTER PRENATAL CARE BEGAN ¹						% CARE BEGAN BY TRIMESTER ²			
	TOTAL	1ST	2ND	3RD	NONE	UNK	1ST	2ND	3RD	NONE
FLORIDA	156,999	118,207	20,130	5,009	1,654	11,999	81.5	13.9	3.5	1.1
ALACHUA	1,730	1,330	217	62	12	109	82.0	13.4	3.8	0.7
BAKER	318	218	57	11	7	25	74.4	19.5	3.8	2.4
BAY	1,777	1,138	284	71	7	277	75.9	18.9	4.7	0.5
BRADFORD	226	153	43	10	3	17	73.2	20.6	4.8	1.4
BREVARD	4,111	3,330	446	79	39	217	85.5	11.5	2.0	1.0
BROWARD	11,947	8,783	1,540	501	145	978	80.1	14.0	4.6	1.3
CALHOUN	117	80	17	1	1	18	80.8	17.2	1.0	1.0
CHARLOTTE	889	612	164	40	11	62	74.0	19.8	4.8	1.3
CITRUS	948	657	185	49	15	42	72.5	20.4	5.4	1.7
CLAY	1,741	1,344	236	40	27	94	81.6	14.3	2.4	1.6
COLLIER	2,749	1,792	609	182	21	145	68.8	23.4	7.0	0.8
COLUMBIA	653	406	148	33	10	56	68.0	24.8	5.5	1.7
MIAMI-DADE	23,765	19,208	1,931	542	166	1,918	87.9	8.8	2.5	0.8
DESOTO	334	197	75	28	3	31	65.0	24.8	9.2	1.0
DIXIE	158	91	38	9	7	13	62.8	26.2	6.2	4.8
DUVAL	6,992	4,973	1,154	278	131	456	76.1	17.7	4.3	2.0
ESCAMBIA	2,461	1,746	309	106	18	282	80.1	14.2	4.9	0.8
FLAGLER	661	501	68	9	5	78	85.9	11.7	1.5	0.9
FRANKLIN	90	57	12	1	1	19	80.3	16.9	1.4	1.4
GADSDEN	197	108	26	5	5	53	75.0	18.1	3.5	3.5
GILCHRIST	154	105	32	5	2	10	72.9	22.2	3.5	1.4
GLADES	46	33	4	4	0	5	80.5	9.8	9.8	0.0
GULF	97	57	16	5	0	19	73.1	20.5	6.4	0.0
HAMILTON	97	56	19	13	4	5	60.9	20.7	14.1	4.3
HARDEE	385	210	116	31	5	23	58.0	32.0	8.6	1.4
HENDRY	490	320	103	34	12	21	68.2	22.0	7.2	2.6
HERNANDO	1,290	1,039	118	20	16	97	87.1	9.9	1.7	1.3
HIGHLANDS	745	431	232	58	9	15	59.0	31.8	7.9	1.2
HILLSBOROUGH	12,268	10,867	960	142	85	214	90.2	8.0	1.2	0.7
HOLMES	195	142	21	11	2	19	80.7	11.9	6.3	1.1
INDIAN RIVER	790	542	183	37	6	22	70.6	23.8	4.8	0.8
JACKSON	348	276	36	15	1	20	84.1	11.0	4.6	0.3
JEFFERSON	62	38	6	4	0	14	79.2	12.5	8.3	0.0
LAFAYETTE	71	49	10	7	1	4	73.1	14.9	10.4	1.5
LAKE	2,550	1,992	250	55	23	230	85.9	10.8	2.4	1.0
LEE	5,194	3,587	1,065	258	46	238	72.4	21.5	5.2	0.9
LEON	1,616	1,129	138	39	9	301	85.9	10.5	3.0	0.7
LEVY	355	236	78	8	4	29	72.4	23.9	2.5	1.2
LIBERTY	84	57	8	4	2	13	80.3	11.3	5.6	2.8
MADISON	104	57	11	5	1	30	77.0	14.9	6.8	1.4
MANATEE	2,773	2,054	475	136	27	81	76.3	17.6	5.1	1.0
MARION	2,646	1,600	630	158	50	208	65.6	25.8	6.5	2.1
MARTIN	1,098	788	210	56	8	36	74.2	19.8	5.3	0.8
MONROE	618	495	61	19	12	31	84.3	10.4	3.2	2.0
NASSAU	681	556	62	15	5	43	87.1	9.7	2.4	0.8
OKALOOSA	2,301	1,646	321	134	16	184	77.8	15.2	6.3	0.8
OKEECHOBEE	479	308	114	26	9	22	67.4	24.9	5.7	2.0
ORANGE	10,407	7,780	870	157	126	1,474	87.1	9.7	1.8	1.4
OSCEOLA	3,451	2,520	370	71	49	441	83.7	12.3	2.4	1.6
PALM BEACH	9,369	6,759	1,312	495	89	714	78.1	15.2	5.7	1.0
PASCO	4,268	3,402	563	78	45	180	83.2	13.8	1.9	1.1
PINELLAS	6,209	4,705	884	155	64	401	81.0	15.2	2.7	1.1
POLK	5,806	4,147	961	172	79	447	77.4	17.9	3.2	1.5
PUTNAM	623	442	103	18	12	48	76.9	17.9	3.1	2.1
SAINT JOHNS	1,856	1,517	200	36	10	93	86.0	11.3	2.0	0.6
SAINT LUCIE	1,978	1,441	349	74	34	80	75.9	18.4	3.9	1.8
SANTA ROSA	1,625	1,180	231	75	9	130	78.9	15.5	5.0	0.6
SARASOTA	2,564	1,965	370	81	29	119	80.4	15.1	3.3	1.2
SEMINOLE	3,451	2,664	315	59	24	389	87.0	10.3	1.9	0.8
SUMTER	395	316	47	6	4	22	84.7	12.6	1.6	1.1
SUWANNEE	363	233	67	24	7	32	70.4	20.2	7.3	2.1
TAYLOR	169	98	24	6	1	40	76.0	18.6	4.7	0.8
UNION	131	92	20	4	3	12	77.3	16.8	3.4	2.5
VOLUSIA	3,744	2,731	494	91	66	362	80.8	14.6	2.7	2.0
WAKULLA	299	193	23	13	1	69	83.9	10.0	5.7	0.4
WALTON	673	494	66	30	5	78	83.0	11.1	5.0	0.8
WASHINGTON	203	130	23	8	4	38	78.8	13.9	4.8	2.4

1. Starting in 2004, "trimester prenatal care began" is calculated as the time elapsed from the date of the last menstrual period to the date of the first prenatal care visit. Prior to 2004, these data were obtained by direct question that noted the trimester the mother began prenatal care. Consequently, these data are not comparable to data from prior years.

2. Births with unknown information as to when prenatal care began are excluded from the denominator.

TABLE B-7 (Cont.): RESIDENT LIVE BIRTHS AND PERCENT TO BLACK MOTHERS
BY TRIMESTER PRENATAL CARE BEGAN, BY COUNTY, FLORIDA, 2014

	TRIMESTER PRENATAL CARE BEGAN ¹						% CARE BEGAN BY TRIMESTER ²			
	TOTAL	1ST	2ND	3RD	NONE	UNK	1ST	2ND	3RD	NONE
FLORIDA	49,059	32,115	8,914	2,107	1,089	4,834	72.6	20.2	4.8	2.5
ALACHUA	889	563	181	43	6	96	71.0	22.8	5.4	0.8
BAKER	35	22	8	2	2	1	64.7	23.5	5.9	5.9
BAY	329	187	64	22	1	55	68.2	23.4	8.0	0.4
BRADFORD	52	24	12	11	0	5	51.1	25.5	23.4	0.0
BREVARD	792	571	138	30	15	38	75.7	18.3	4.0	2.0
BROWARD	8,498	5,311	1,656	399	243	889	69.8	21.8	5.2	3.2
CALHOUN	13	8	4	0	0	1	66.7	33.3	0.0	0.0
CHARLOTTE	81	45	22	10	0	4	58.4	28.6	13.0	0.0
CITRUS	37	21	9	5	0	2	60.0	25.7	14.3	0.0
CLAY	208	146	33	8	6	15	75.6	17.1	4.1	3.1
COLLIER	382	221	93	35	4	29	62.6	26.3	9.9	1.1
COLUMBIA	156	98	24	9	2	23	73.7	18.0	6.8	1.5
MIAMI-DADE	7,059	5,425	923	122	121	468	82.3	14.0	1.9	1.8
DESOTO	41	25	10	3	0	3	65.8	26.3	7.9	0.0
DIXIE	9	4	2	1	0	2	57.1	28.6	14.3	0.0
DUVAL	4,387	2,391	1,209	276	138	373	59.6	30.1	6.9	3.4
ESCAMBIA	1,183	704	234	64	30	151	68.2	22.7	6.2	2.9
FLAGLER	112	77	22	2	1	10	75.5	21.6	2.0	1.0
FRANKLIN	10	6	3	0	0	1	66.7	33.3	0.0	0.0
GADSDEN	331	174	51	17	6	83	70.2	20.6	6.9	2.4
GILCHRIST	10	6	4	0	0	0	60.0	40.0	0.0	0.0
GLADES	10	6	3	0	0	1	66.7	33.3	0.0	0.0
GULF	13	9	2	0	1	1	75.0	16.7	0.0	8.3
HAMILTON	47	23	15	2	1	6	56.1	36.6	4.9	2.4
HARDEE	20	9	8	2	0	1	47.4	42.1	10.5	0.0
HENDRY	61	38	10	0	0	13	79.2	20.8	0.0	0.0
HERNANDO	116	86	10	3	2	15	85.1	9.9	3.0	2.0
HIGHLANDS	152	86	46	15	1	4	58.1	31.1	10.1	0.7
HILLSBOROUGH	3,497	3,142	234	28	35	58	91.4	6.8	0.8	1.0
HOLMES	4	3	1	0	0	0	75.0	25.0	0.0	0.0
INDIAN RIVER	230	116	81	18	4	11	53.0	37.0	8.2	1.8
JACKSON	150	118	19	4	1	8	83.1	13.4	2.8	0.7
JEFFERSON	63	34	10	3	2	14	69.4	20.4	6.1	4.1
LAFAYETTE	5	2	0	1	0	2	66.7	0.0	33.3	0.0
LAKE	422	301	54	12	9	46	80.1	14.4	3.2	2.4
LEE	950	593	233	72	9	43	65.4	25.7	7.9	1.0
LEON	1,284	660	191	61	12	360	71.4	20.7	6.6	1.3
LEVY	43	25	8	4	2	4	64.1	20.5	10.3	5.1
LIBERTY	7	2	1	0	0	4	66.7	33.3	0.0	0.0
MADISON	86	43	15	6	2	20	65.2	22.7	9.1	3.0
MANATEE	455	285	111	31	9	19	65.4	25.5	7.1	2.1
MARION	633	310	204	58	17	44	52.6	34.6	9.8	2.9
MARTIN	108	59	36	9	3	1	55.1	33.6	8.4	2.8
MONROE	88	60	19	4	3	2	69.8	22.1	4.7	3.5
NASSAU	42	31	7	1	0	3	79.5	17.9	2.6	0.0
OKALOOSA	325	197	55	22	6	45	70.4	19.6	7.9	2.1
OKEECHOBEE	30	22	4	3	0	1	75.9	13.8	10.3	0.0
ORANGE	4,399	2,765	640	99	138	757	75.9	17.6	2.7	3.8
OSCEOLA	466	317	66	12	10	61	78.3	16.3	3.0	2.5
PALM BEACH	4,187	2,651	758	318	67	393	69.9	20.0	8.4	1.8
PASCO	314	236	48	4	6	20	80.3	16.3	1.4	2.0
PINELLAS	1,483	899	333	70	19	162	68.1	25.2	5.3	1.4
POLK	1,495	877	345	56	37	180	66.7	26.2	4.3	2.8
PUTNAM	178	118	34	6	3	17	73.3	21.1	3.7	1.9
SAINT JOHNS	161	100	36	3	2	20	70.9	25.5	2.1	1.4
SAINT LUCIE	810	501	189	45	49	26	63.9	24.1	5.7	6.3
SANTA ROSA	89	59	21	4	0	5	70.2	25.0	4.8	0.0
SARASOTA	239	152	57	5	3	22	70.0	26.3	2.3	1.4
SEMINOLE	694	461	117	23	24	69	73.8	18.7	3.7	3.8
SUMTER	82	60	7	3	1	11	84.5	9.9	4.2	1.4
SUWANNEE	63	43	12	5	1	2	70.5	19.7	8.2	1.6
TAYLOR	45	25	7	0	0	13	78.1	21.9	0.0	0.0
UNION	21	12	5	1	0	3	66.7	27.8	5.6	0.0
VOLUSIA	780	497	141	29	30	83	71.3	20.2	4.2	4.3
WAKULLA	33	17	4	2	1	9	70.8	16.7	8.3	4.2
WALTON	30	13	11	2	1	3	48.1	40.7	7.4	3.7
WASHINGTON	30	23	3	1	0	3	85.2	11.1	3.7	0.0

1. Starting in 2004, "trimester prenatal care began" is calculated as the time elapsed from the date of the last menstrual period to the date of the first prenatal care visit. Prior to 2004, these data were obtained by direct question that noted the trimester the mother began prenatal care. Consequently, these data are not comparable to data from prior years.

2. Births with unknown information as to when prenatal care began are excluded from the denominator.

TABLE B-7 (Cont.): RESIDENT LIVE BIRTHS AND PERCENT TO OTHER MOTHERS
BY TRIMESTER PRENATAL CARE BEGAN, BY COUNTY, FLORIDA, 2014

	TRIMESTER PRENATAL CARE BEGAN ¹						% CARE BEGAN BY TRIMESTER ²			
	TOTAL	1ST	2ND	3RD	NONE	UNK	1ST	2ND	3RD	NONE
FLORIDA	12,712	9,107	1,795	537	140	1,133	78.7	15.5	4.6	1.2
ALACHUA	293	227	35	15	2	14	81.4	12.5	5.4	0.7
BAKER	12	10	2	0	0	0	83.3	16.7	0.0	0.0
BAY	176	106	34	11	0	25	70.2	22.5	7.3	0.0
BRADFORD	4	0	1	3	0	0	0.0	25.0	75.0	0.0
BREVARD	349	274	42	10	4	19	83.0	12.7	3.0	1.2
BROWARD	1,673	1,126	253	85	28	181	75.5	17.0	5.7	1.9
CALHOUN	1	0	0	0	0	1	0.0	0.0	0.0	0.0
CHARLOTTE	37	21	9	4	1	2	60.0	25.7	11.4	2.9
CITRUS	30	23	6	1	0	0	76.7	20.0	3.3	0.0
CLAY	123	85	22	4	2	10	75.2	19.5	3.5	1.8
COLLIER	155	96	38	14	0	7	64.9	25.7	9.5	0.0
COLUMBIA	23	16	4	2	0	1	72.7	18.2	9.1	0.0
MIAMI-DADE	831	652	71	15	6	87	87.6	9.5	2.0	0.8
DESOTO	8	5	2	1	0	0	62.5	25.0	12.5	0.0
DIXIE	2	1	0	0	0	1	100.0	0.0	0.0	0.0
DUVAL	1,111	748	209	52	19	83	72.8	20.3	5.1	1.8
ESCAMBIA	235	159	35	9	4	28	76.8	16.9	4.3	1.9
FLAGLER	56	44	12	0	0	0	78.6	21.4	0.0	0.0
FRANKLIN	0	0	0	0	0	0	0.0	0.0	0.0	0.0
GADSDEN	7	4	1	1	0	1	66.7	16.7	16.7	0.0
GILCHRIST	3	3	0	0	0	0	100.0	0.0	0.0	0.0
GLADES	4	0	3	1	0	0	0.0	75.0	25.0	0.0
GULF	7	4	2	0	0	1	66.7	33.3	0.0	0.0
HAMILTON	1	1	0	0	0	0	100.0	0.0	0.0	0.0
HARDEE	9	5	3	1	0	0	55.6	33.3	11.1	0.0
HENDRY	18	12	5	0	0	1	70.6	29.4	0.0	0.0
HERNANDO	78	69	8	0	0	1	89.6	10.4	0.0	0.0
HIGHLANDS	37	22	8	6	0	1	61.1	22.2	16.7	0.0
HILLSBOROUGH	1,058	942	79	15	4	18	90.6	7.6	1.4	0.4
HOLMES	8	6	1	0	0	1	85.7	14.3	0.0	0.0
INDIAN RIVER	39	24	11	4	0	0	61.5	28.2	10.3	0.0
JACKSON	15	13	1	0	0	1	92.9	7.1	0.0	0.0
JEFFERSON	2	2	0	0	0	0	100.0	0.0	0.0	0.0
LAFAYETTE	0	0	0	0	0	0	0.0	0.0	0.0	0.0
LAKE	192	153	18	4	1	16	86.9	10.2	2.3	0.6
LEE	190	110	46	14	5	15	62.9	26.3	8.0	2.9
LEON	185	109	22	8	2	44	77.3	15.6	5.7	1.4
LEVY	10	7	0	2	0	1	77.8	0.0	22.2	0.0
LIBERTY	1	1	0	0	0	0	100.0	0.0	0.0	0.0
MADISON	1	0	0	0	0	1	0.0	0.0	0.0	0.0
MANATEE	301	186	79	25	5	6	63.1	26.8	8.5	1.7
MARION	137	92	25	11	2	7	70.8	19.2	8.5	1.5
MARTIN	51	28	15	6	1	1	56.0	30.0	12.0	2.0
MONROE	43	33	6	0	1	3	82.5	15.0	0.0	2.5
NASSAU	20	18	1	1	0	0	90.0	5.0	5.0	0.0
OKALOOSA	192	133	29	10	1	19	76.9	16.8	5.8	0.6
OKEECHOBEE	27	14	5	3	2	3	58.3	20.8	12.5	8.3
ORANGE	1,404	992	122	39	19	232	84.6	10.4	3.3	1.6
OSCEOLA	270	182	31	6	9	42	79.8	13.6	2.6	3.9
PALM BEACH	855	606	115	53	3	78	78.0	14.8	6.8	0.4
PASCO	221	176	29	3	2	11	83.8	13.8	1.4	1.0
PINELLAS	678	491	112	36	5	34	76.2	17.4	5.6	0.8
POLK	302	209	62	8	1	22	74.6	22.1	2.9	0.4
PUTNAM	30	19	4	3	0	4	73.1	15.4	11.5	0.0
SAINT JOHNS	128	100	17	7	0	4	80.6	13.7	5.6	0.0
SAINT LUCIE	156	108	28	10	3	7	72.5	18.8	6.7	2.0
SANTA ROSA	105	77	17	4	0	7	78.6	17.3	4.1	0.0
SARASOTA	138	97	27	6	2	6	73.5	20.5	4.5	1.5
SEMINOLE	364	256	44	11	3	50	81.5	14.0	3.5	1.0
SUMTER	15	15	0	0	0	0	100.0	0.0	0.0	0.0
SUWANNEE	14	4	5	1	0	4	40.0	50.0	10.0	0.0
TAYLOR	3	2	0	1	0	0	66.7	0.0	33.3	0.0
UNION	2	2	0	0	0	0	100.0	0.0	0.0	0.0
VOLUSIA	239	169	32	8	3	27	79.7	15.1	3.8	1.4
WAKULLA	3	2	0	0	0	1	100.0	0.0	0.0	0.0
WALTON	21	11	4	3	0	3	61.1	22.2	16.7	0.0
WASHINGTON	8	5	2	0	0	1	71.4	28.6	0.0	0.0

1. Starting in 2004, "trimester prenatal care began" is calculated as the time elapsed from the date of the last menstrual period to the date of the first prenatal care visit. Prior to 2004, these data were obtained by direct question that noted the trimester the mother began prenatal care. Consequently, these data are not comparable to data from prior years.

2. Births with unknown information as to when prenatal care began are excluded from the denominator.

TABLE B-8: RESIDENT LIVE BIRTHS TO UNWED MOTHERS, BY AGE OF MOTHER, BY COUNTY, FLORIDA, 2014

	TOTAL	<13	13	14	15	16	17	18	19	20-24	25-29	30-34	35-44	45+	UNK
FLORIDA	105,278	5	15	120	384	929	1,795	3,306	5,287	36,608	29,389	17,255	10,038	136	3
ALACHUA	1,210	0	0	0	4	7	21	35	70	442	365	187	76	3	0
BAKER	171	0	0	0	0	3	5	17	17	71	30	14	14	0	0
BAY	1,090	0	0	1	4	22	28	38	66	458	277	136	59	1	0
BRADFORD	162	0	0	1	1	2	0	12	14	75	33	17	7	0	0
BREVARD	2,391	0	0	3	11	14	34	79	116	854	711	374	190	5	0
BROWARD	9,947	0	1	5	26	58	109	242	407	2,980	2,814	1,955	1,330	20	0
CALHOUN	81	0	0	0	0	5	4	4	7	28	21	8	4	0	0
CHARLOTTE	546	0	0	0	4	5	14	20	25	222	143	73	40	0	0
CITRUS	591	0	0	0	1	9	9	23	39	258	153	71	28	0	0
CLAY	827	0	0	0	4	7	21	34	58	333	220	97	53	0	0
COLLIER	1,481	0	0	0	5	10	34	42	78	446	399	290	171	6	0
COLUMBIA	474	0	0	0	4	10	7	22	36	198	125	50	22	0	0
MIAMI-DADE	15,884	1	1	9	39	90	206	331	565	4,723	4,575	3,144	2,165	34	1
DESOTO	230	0	0	0	2	6	4	12	20	89	63	22	12	0	0
DIXIE	97	0	0	0	1	3	2	2	5	38	33	12	1	0	0
DUVAL	6,050	0	2	10	26	46	111	207	336	2,267	1,746	900	396	3	0
ESCAMBIA	2,023	0	1	4	10	34	34	82	123	800	545	272	116	2	0
FLAGLER	407	0	0	0	2	3	13	13	23	149	105	70	28	1	0
FRANKLIN	61	0	0	0	0	1	5	1	4	25	20	4	1	0	0
GADSDEN	377	0	1	0	2	1	7	12	22	145	97	55	35	0	0
GILCHRIST	89	0	0	0	1	2	0	3	11	38	18	15	1	0	0
GLADES	35	0	0	0	0	4	0	1	3	15	7	3	2	0	0
GULF	71	0	0	0	0	0	1	2	7	37	12	5	7	0	0
HAMILTON	97	0	0	1	0	2	0	5	4	44	25	8	8	0	0
HARDEE	243	0	0	1	1	4	9	13	21	92	66	21	15	0	0
HENDRY	350	0	0	0	3	2	5	19	22	118	95	54	29	2	0
HERNANDO	771	0	0	0	2	4	13	22	36	313	218	117	46	0	0
HIGHLANDS	540	0	0	0	0	8	14	21	36	204	163	62	31	1	0
HILLSBOROUGH	8,122	0	0	16	31	72	178	289	404	2,982	2,254	1,226	657	10	1
HOLMES	87	0	0	1	0	1	6	5	9	34	16	11	4	0	0
INDIAN RIVER	649	0	0	0	4	3	12	14	41	246	191	89	48	1	0
JACKSON	293	0	0	0	1	5	10	9	17	128	74	37	12	0	0
JEFFERSON	75	0	0	0	0	0	0	1	3	30	25	8	8	0	0
LAFAYETTE	41	0	0	0	0	0	2	0	3	17	12	5	2	0	0
LAKE	1,505	0	0	1	4	14	33	84	82	613	387	181	105	0	0
LEE	3,195	1	0	3	17	22	75	119	165	1,109	876	511	296	0	1
LEON	1,441	0	1	4	6	16	17	51	82	576	390	194	104	0	0
LEVY	220	0	1	0	1	4	4	8	11	87	58	34	12	0	0
LIBERTY	38	0	0	0	0	2	1	3	0	23	5	2	2	0	0
MADISON	105	0	0	0	0	0	1	2	4	46	33	15	4	0	0
MANATEE	1,887	0	1	4	12	19	38	87	120	674	470	301	159	0	0
MARION	1,847	0	0	6	13	22	45	73	89	739	508	236	114	2	0
MARTIN	564	1	0	1	5	5	8	21	27	175	162	91	67	1	0
MONROE	318	0	0	1	0	2	6	2	17	93	90	63	44	0	0
NASSAU	300	0	0	0	0	2	10	11	18	118	78	44	19	0	0
OKALOOSA	947	0	1	1	4	12	16	41	47	357	272	118	77	1	0
OKEECHOBEE	344	0	0	1	2	2	14	15	21	131	98	39	21	0	0
ORANGE	7,573	0	2	7	23	75	119	214	383	2,575	2,096	1,289	774	15	0
OSCEOLA	2,107	0	1	4	6	23	35	85	141	730	575	318	185	4	0
PALM BEACH	6,535	2	1	11	23	51	78	157	306	2,040	1,768	1,239	851	8	0
PASCO	2,196	0	0	2	5	27	37	67	132	804	611	346	163	2	0
PINELLAS	4,353	0	1	7	19	36	75	121	190	1,554	1,253	714	376	7	0
POLK	4,023	0	0	4	21	51	85	174	262	1,576	1,086	520	239	4	0
PUTNAM	505	0	0	1	4	8	13	23	38	189	135	60	33	1	0
SAINT JOHNS	620	0	0	0	1	3	6	26	30	218	168	115	52	1	0
SAINT LUCIE	1,532	0	0	1	2	12	18	57	61	533	457	270	121	0	0
SANTA ROSA	588	0	0	1	4	6	15	26	39	238	151	82	26	0	0
SARASOTA	1,313	0	0	2	8	16	26	38	71	421	384	223	124	0	0
SEMINOLE	1,755	0	0	4	3	13	24	36	83	615	529	285	162	1	0
SUMTER	271	0	0	0	2	2	5	13	20	121	60	36	12	0	0
SUWANNEE	257	0	0	1	3	2	9	8	19	94	73	33	15	0	0
TAYLOR	119	0	0	0	0	2	5	6	8	54	28	11	5	0	0
UNION	76	0	0	0	0	1	2	1	6	25	21	14	6	0	0
VOLUSIA	2,604	0	0	1	6	30	43	80	126	956	765	390	207	0	0
WAKULLA	138	0	0	0	1	0	1	8	12	56	45	12	3	0	0
WALTON	308	0	0	0	0	4	8	12	17	109	82	47	29	0	0
WASHINGTON	118	0	0	0	0	2	4	5	12	57	23	6	9	0	0

TABLE B-8 (Cont.): RESIDENT LIVE BIRTHS TO UNWED WHITE MOTHERS, BY AGE OF MOTHER, BY COUNTY, FLORIDA, 2014

	TOTAL	<13	13	14	15	16	17	18	19	20-24	25-29	30-34	35-44	45+	UNK
FLORIDA	67,010	3	7	65	208	567	1,133	2,051	3,251	22,469	18,903	11,420	6,826	97	3
ALACHUA	491	0	0	0	0	2	7	16	23	148	168	84	40	3	0
BAKER	137	0	0	0	0	3	4	16	14	57	25	10	8	0	0
BAY	743	0	0	1	2	18	18	30	46	305	188	88	46	1	0
BRADFORD	119	0	0	1	1	2	0	8	12	56	22	14	3	0	0
BREVARD	1,713	0	0	0	8	7	26	55	79	601	531	265	137	4	0
BROWARD	4,237	0	1	2	9	17	29	90	133	1,141	1,270	880	651	14	0
CALHOUN	69	0	0	0	0	4	4	3	7	23	20	5	3	0	0
CHARLOTTE	476	0	0	0	2	5	11	17	21	199	124	64	33	0	0
CITRUS	553	0	0	0	1	8	8	21	37	244	140	66	28	0	0
CLAY	674	0	0	0	4	5	16	33	51	269	178	78	40	0	0
COLLIER	1,253	0	0	0	4	9	32	34	69	377	351	240	134	3	0
COLUMBIA	338	0	0	0	3	7	5	13	26	146	87	37	14	0	0
MIAMI-DADE	10,594	0	1	3	19	52	115	182	330	2,862	3,094	2,248	1,661	26	1
DESOTO	195	0	0	0	1	5	3	11	17	72	53	21	12	0	0
DIXIE	87	0	0	0	1	3	2	2	4	35	28	11	1	0	0
DUVAL	2,507	0	0	0	6	11	46	73	124	919	752	401	173	2	0
ESCAMBIA	996	0	0	1	5	21	20	42	50	372	289	132	63	1	0
FLAGLER	303	0	0	0	0	2	7	9	14	106	85	56	23	1	0
FRANKLIN	52	0	0	0	0	1	5	1	3	22	15	4	1	0	0
GADSDEN	100	0	0	0	0	0	1	2	4	35	26	19	13	0	0
GILCHRIST	81	0	0	0	1	2	0	3	10	33	17	14	1	0	0
GLADES	23	0	0	0	0	3	0	1	1	13	2	1	2	0	0
GULF	55	0	0	0	0	0	0	2	7	30	8	4	4	0	0
HAMILTON	54	0	0	0	0	1	0	2	2	25	13	5	6	0	0
HARDEE	220	0	0	0	1	4	9	12	20	81	59	20	14	0	0
HENDRY	288	0	0	0	3	2	5	15	20	91	81	42	26	2	0
HERNANDO	655	0	0	0	1	2	12	20	30	266	180	106	38	0	0
HIGHLANDS	401	0	0	0	0	6	13	12	29	144	118	51	27	1	0
HILLSBOROUGH	5,332	0	0	14	23	50	112	178	263	1,862	1,483	858	478	8	1
HOLMES	79	0	0	1	0	0	6	5	8	34	13	9	3	0	0
INDIAN RIVER	355	0	0	0	1	1	7	7	26	134	104	48	27	0	0
JACKSON	153	0	0	0	1	3	7	4	11	70	28	22	7	0	0
JEFFERSON	21	0	0	0	0	0	0	1	1	9	5	4	1	0	0
LAFAYETTE	37	0	0	0	0	0	2	0	2	14	12	5	2	0	0
LAKE	1,133	0	0	1	3	11	20	62	62	457	291	141	84	0	0
LEE	2,473	0	0	3	11	13	58	85	121	846	674	423	238	0	1
LEON	443	0	0	0	1	4	5	14	33	155	119	72	40	0	0
LEVY	177	0	1	0	1	2	4	8	6	70	48	28	9	0	0
LIBERTY	31	0	0	0	0	0	1	3	0	22	3	1	1	0	0
MADISON	35	0	0	0	0	0	0	0	1	18	9	6	1	0	0
MANATEE	1,351	0	1	3	7	17	27	60	81	465	340	228	120	0	0
MARION	1,317	0	0	5	10	17	32	57	70	544	330	169	81	2	0
MARTIN	457	1	0	1	4	5	6	19	20	140	134	70	56	1	0
MONROE	263	0	0	1	0	1	5	1	12	78	76	53	36	0	0
NASSAU	259	0	0	0	0	2	8	9	17	104	69	35	15	0	0
OKALOOSA	706	0	1	1	3	10	12	34	39	260	199	89	58	0	0
OKEECHOBEE	288	0	0	1	2	2	12	12	20	105	85	33	16	0	0
ORANGE	4,264	0	0	2	8	41	65	117	210	1,389	1,216	748	460	8	0
OSCEOLA	1,752	0	1	2	4	18	29	74	123	612	477	270	139	3	0
PALM BEACH	3,764	2	0	5	11	27	52	93	146	1,073	1,043	769	538	5	0
PASCO	1,964	0	0	2	3	23	32	58	119	726	549	309	141	2	0
PINELLAS	2,773	0	1	3	10	18	45	64	111	926	808	502	280	5	0
POLK	2,794	0	0	3	16	37	62	123	186	1,091	724	372	175	4	0
PUTNAM	331	0	0	1	1	4	11	14	28	127	81	38	26	0	0
SAINT JOHNS	481	0	0	0	1	2	4	17	22	145	139	100	50	1	0
SAINT LUCIE	888	0	0	1	1	7	10	28	29	321	256	163	72	0	0
SANTA ROSA	506	0	0	0	3	3	13	22	33	207	130	70	25	0	0
SARASOTA	1,091	0	0	2	3	11	21	31	59	332	333	195	104	0	0
SEMINOLE	1,182	0	0	3	2	7	9	24	51	402	366	201	117	0	0
SUMTER	199	0	0	0	0	1	4	11	15	87	42	30	9	0	0
SUWANNEE	200	0	0	1	3	2	9	5	15	71	58	24	12	0	0
TAYLOR	82	0	0	0	0	2	4	5	6	40	14	8	3	0	0
UNION	62	0	0	0	0	1	1	1	6	19	18	12	4	0	0
VOLUSIA	1,865	0	0	1	3	18	27	57	85	657	570	289	158	0	0
WAKULLA	114	0	0	0	0	0	1	7	10	45	39	10	2	0	0
WALTON	276	0	0	0	0	3	8	11	14	94	77	43	26	0	0
WASHINGTON	89	0	0	0	0	2	4	5	7	44	16	4	7	0	0

TABLE B-8 (Cont.): RESIDENT LIVE BIRTHS TO UNWED BLACK MOTHERS, BY AGE OF MOTHER, BY COUNTY, FLORIDA, 2014

	TOTAL	<13	13	14	15	16	17	18	19	20-24	25-29	30-34	35-44	45+	UNK
FLORIDA	34,128	2	7	51	153	318	580	1,115	1,824	12,835	9,386	5,077	2,750	29	0
ALACHUA	686	0	0	0	3	4	12	19	42	283	190	98	35	0	0
BAKER	27	0	0	0	0	0	0	0	2	12	4	4	5	0	0
BAY	248	0	0	0	1	2	6	5	14	111	71	30	8	0	0
BRADFORD	41	0	0	0	0	0	0	4	2	18	10	3	4	0	0
BREVARD	563	0	0	3	3	5	7	20	25	208	154	94	43	1	0
BROWARD	5,208	0	0	3	16	39	78	136	259	1,716	1,403	947	607	4	0
CALHOUN	12	0	0	0	0	1	0	1	0	5	1	3	1	0	0
CHARLOTTE	54	0	0	0	0	0	2	3	3	20	15	6	5	0	0
CITRUS	25	0	0	0	0	0	0	1	1	12	8	3	0	0	0
CLAY	102	0	0	0	0	1	3	1	4	48	32	7	6	0	0
COLLIER	190	0	0	0	0	1	2	8	8	63	39	36	31	2	0
COLUMBIA	128	0	0	0	1	3	2	9	10	49	35	12	7	0	0
MIAMI-DADE	5,000	1	0	6	19	37	84	146	228	1,788	1,401	828	455	7	0
DESOTO	33	0	0	0	1	1	1	1	3	16	9	1	0	0	0
DIXIE	9	0	0	0	0	0	0	0	1	3	4	1	0	0	0
DUVAL	3,232	0	2	9	19	34	55	117	191	1,243	920	449	192	1	0
ESCAMBIA	937	0	0	3	5	11	13	37	67	398	229	126	48	0	0
FLAGLER	77	0	0	0	1	0	4	4	6	35	13	10	4	0	0
FRANKLIN	9	0	0	0	0	0	0	0	1	3	5	0	0	0	0
GADSDEN	274	0	1	0	2	1	6	10	18	109	70	36	21	0	0
GILCHRIST	7	0	0	0	0	0	0	0	1	5	1	0	0	0	0
GLADES	9	0	0	0	0	0	0	0	1	2	4	2	0	0	0
GULF	12	0	0	0	0	0	1	0	0	6	1	1	3	0	0
HAMILTON	42	0	0	1	0	1	0	3	2	19	11	3	2	0	0
HARDEE	19	0	0	1	0	0	0	1	1	8	7	0	1	0	0
HENDRY	51	0	0	0	0	0	0	3	1	21	14	11	1	0	0
HERNANDO	83	0	0	0	0	1	0	2	5	35	28	9	3	0	0
HIGHLANDS	125	0	0	0	0	2	1	8	6	55	39	10	4	0	0
HILLSBOROUGH	2,566	0	0	2	8	21	65	99	129	1,050	720	319	151	2	0
HOLMES	3	0	0	0	0	1	0	0	1	0	1	0	0	0	0
INDIAN RIVER	184	0	0	0	2	2	0	3	9	72	58	23	14	1	0
JACKSON	131	0	0	0	0	2	2	3	5	54	45	15	5	0	0
JEFFERSON	52	0	0	0	0	0	0	0	2	20	19	4	7	0	0
LAFAYETTE	4	0	0	0	0	0	0	0	1	3	0	0	0	0	0
LAKE	305	0	0	0	1	3	11	18	17	134	82	27	12	0	0
LEE	650	1	0	0	6	8	16	30	42	235	184	76	52	0	0
LEON	954	0	1	4	5	10	10	34	48	406	256	119	61	0	0
LEVY	36	0	0	0	0	1	0	0	2	16	9	6	2	0	0
LIBERTY	6	0	0	0	0	2	0	0	0	1	2	1	0	0	0
MADISON	70	0	0	0	0	0	1	2	3	28	24	9	3	0	0
MANATEE	373	0	0	1	4	2	7	17	28	156	91	48	19	0	0
MARION	477	0	0	1	3	5	12	14	17	175	161	60	29	0	0
MARTIN	85	0	0	0	1	0	0	1	6	30	25	15	7	0	0
MONROE	47	0	0	0	0	1	1	1	4	11	14	7	8	0	0
NASSAU	30	0	0	0	0	0	0	2	1	9	8	6	4	0	0
OKALOOSA	189	0	0	0	1	1	3	5	7	73	60	23	16	0	0
OKEECHOBEE	24	0	0	0	0	0	1	1	0	13	6	3	0	0	0
ORANGE	2,947	0	2	4	14	33	51	89	156	1,070	775	477	271	4	0
OSCEOLA	281	0	0	2	2	5	6	10	14	97	73	38	34	0	0
PALM BEACH	2,569	0	1	6	12	21	26	61	157	913	663	427	279	3	0
PASCO	175	0	0	0	1	4	3	8	10	58	46	34	11	0	0
PINELLAS	1,260	0	0	3	4	15	21	50	65	528	348	155	69	2	0
POLK	1,114	0	0	1	5	12	21	45	62	446	339	134	49	0	0
PUTNAM	153	0	0	0	3	2	2	7	10	56	46	19	7	1	0
SAINT JOHNS	115	0	0	0	0	0	2	8	6	60	24	13	2	0	0
SAINT LUCIE	560	0	0	0	1	5	6	25	29	187	176	89	42	0	0
SANTA ROSA	44	0	0	0	0	1	1	1	2	19	13	7	0	0	0
SARASOTA	173	0	0	0	3	3	5	5	9	75	39	19	15	0	0
SEMINOLE	472	0	0	1	0	5	11	12	24	179	138	64	37	1	0
SUMTER	65	0	0	0	2	1	1	1	5	33	13	6	3	0	0
SUWANNEE	49	0	0	0	0	0	0	2	4	20	13	8	2	0	0
TAYLOR	35	0	0	0	0	0	1	0	2	13	14	3	2	0	0
UNION	13	0	0	0	0	0	1	0	0	5	3	2	2	0	0
VOLUSIA	639	0	0	0	3	7	15	20	37	265	166	84	42	0	0
WAKULLA	23	0	0	0	1	0	0	1	2	11	5	2	1	0	0
WALTON	22	0	0	0	0	1	0	1	3	9	3	2	3	0	0
WASHINGTON	26	0	0	0	0	0	0	0	3	13	6	2	2	0	0

TABLE B-8 (Cont.): RESIDENT LIVE BIRTHS TO UNWED OTHER MOTHERS, BY AGE OF MOTHER, BY COUNTY, FLORIDA, 2014

	TOTAL	<13	13	14	15	16	17	18	19	20-24	25-29	30-34	35-44	45+	UNK
FLORIDA	3,677	0	1	4	18	41	65	123	199	1,164	973	670	412	7	0
ALACHUA	33	0	0	0	1	1	2	0	5	11	7	5	1	0	0
BAKER	7	0	0	0	0	0	1	1	1	2	1	0	1	0	0
BAY	75	0	0	0	0	2	3	0	5	35	14	12	4	0	0
BRADFORD	2	0	0	0	0	0	0	0	0	1	1	0	0	0	0
BREVARD	112	0	0	0	0	2	1	3	12	45	24	15	10	0	0
BROWARD	461	0	0	0	1	2	2	13	15	113	128	121	64	2	0
CALHOUN	0	0	0	0	0	0	0	0	0	0	0	0	0	0	0
CHARLOTTE	16	0	0	0	2	0	1	0	1	3	4	3	2	0	0
CITRUS	12	0	0	0	0	1	1	1	1	2	4	2	0	0	0
CLAY	47	0	0	0	0	1	2	0	3	16	8	11	6	0	0
COLLIER	37	0	0	0	1	0	0	0	1	6	8	14	6	1	0
COLUMBIA	8	0	0	0	0	0	0	0	0	3	3	1	1	0	0
MIAMI-DADE	184	0	0	0	0	0	2	3	6	51	53	36	33	0	0
DESOTO	2	0	0	0	0	0	0	0	0	1	1	0	0	0	0
DIXIE	1	0	0	0	0	0	0	0	0	0	1	0	0	0	0
DUVAL	303	0	0	1	1	1	10	17	21	103	72	48	29	0	0
ESCAMBIA	89	0	1	0	0	2	1	3	6	30	27	14	4	1	0
FLAGLER	27	0	0	0	1	1	2	0	3	8	7	4	1	0	0
FRANKLIN	0	0	0	0	0	0	0	0	0	0	0	0	0	0	0
GADSDEN	3	0	0	0	0	0	0	0	0	1	1	0	1	0	0
GILCHRIST	1	0	0	0	0	0	0	0	0	0	0	1	0	0	0
GLADES	3	0	0	0	0	1	0	0	1	0	1	0	0	0	0
GULF	4	0	0	0	0	0	0	0	0	1	3	0	0	0	0
HAMILTON	1	0	0	0	0	0	0	0	0	0	1	0	0	0	0
HARDEE	4	0	0	0	0	0	0	0	0	3	0	1	0	0	0
HENDRY	11	0	0	0	0	0	0	1	1	6	0	1	2	0	0
HERNANDO	31	0	0	0	1	1	1	0	1	12	9	2	4	0	0
HIGHLANDS	13	0	0	0	0	0	0	1	0	5	6	1	0	0	0
HILLSBOROUGH	215	0	0	0	0	0	1	11	12	66	50	48	27	0	0
HOLMES	5	0	0	0	0	0	0	0	0	0	2	2	1	0	0
INDIAN RIVER	11	0	0	0	1	0	0	0	1	3	2	3	1	0	0
JACKSON	9	0	0	0	0	0	1	2	1	4	1	0	0	0	0
JEFFERSON	2	0	0	0	0	0	0	0	0	1	1	0	0	0	0
LAFAYETTE	0	0	0	0	0	0	0	0	0	0	0	0	0	0	0
LAKE	66	0	0	0	0	0	2	4	3	22	13	13	9	0	0
LEE	62	0	0	0	0	1	1	4	2	21	16	11	6	0	0
LEON	44	0	0	0	0	2	2	3	1	15	15	3	3	0	0
LEVY	6	0	0	0	0	1	0	0	3	1	0	0	1	0	0
LIBERTY	1	0	0	0	0	0	0	0	0	0	0	0	1	0	0
MADISON	0	0	0	0	0	0	0	0	0	0	0	0	0	0	0
MANATEE	158	0	0	0	0	0	4	9	11	51	38	25	20	0	0
MARION	53	0	0	0	0	0	1	2	2	20	17	7	4	0	0
MARTIN	17	0	0	0	0	0	0	1	1	5	3	5	2	0	0
MONROE	8	0	0	0	0	0	0	0	1	4	0	3	0	0	0
NASSAU	10	0	0	0	0	0	2	0	0	5	1	2	0	0	0
OKALOOSA	46	0	0	0	0	1	1	2	1	20	12	6	3	0	0
OKEECHOBEE	19	0	0	0	0	0	0	2	1	5	5	2	4	0	0
ORANGE	355	0	0	1	1	1	3	8	17	113	102	63	43	3	0
OSCEOLA	70	0	0	0	0	0	0	1	4	19	25	10	11	0	0
PALM BEACH	197	0	0	0	0	3	0	3	3	51	61	42	34	0	0
PASCO	50	0	0	0	1	0	2	1	3	17	14	3	9	0	0
PINELLAS	256	0	0	1	4	3	6	5	11	85	74	44	23	0	0
POLK	113	0	0	0	0	2	2	6	14	39	22	14	14	0	0
PUTNAM	21	0	0	0	0	2	0	2	0	6	8	3	0	0	0
SAINT JOHNS	23	0	0	0	0	1	0	1	2	13	4	2	0	0	0
SAINT LUCIE	69	0	0	0	0	0	2	4	2	20	21	14	6	0	0
SANTA ROSA	35	0	0	1	1	2	1	2	4	10	8	5	1	0	0
SARASOTA	44	0	0	0	1	2	0	1	3	13	12	8	4	0	0
SEMINOLE	97	0	0	0	1	1	4	0	8	31	24	20	8	0	0
SUMTER	7	0	0	0	0	0	0	1	0	1	5	0	0	0	0
SUWANNEE	8	0	0	0	0	0	0	1	0	3	2	1	1	0	0
TAYLOR	2	0	0	0	0	0	0	1	0	1	0	0	0	0	0
UNION	1	0	0	0	0	0	0	0	0	1	0	0	0	0	0
VOLUSIA	98	0	0	0	0	4	1	3	4	34	28	17	7	0	0
WAKULLA	1	0	0	0	0	0	0	0	0	0	1	0	0	0	0
WALTON	10	0	0	0	0	0	0	0	0	6	2	2	0	0	0
WASHINGTON	1	0	0	0	0	0	0	0	1	0	0	0	0	0	0

TABLE B-9: RESIDENT LIVE BIRTHS BY MONTH, BY COUNTY, FLORIDA, 2014

	TOTAL	JAN	FEB	MAR	APR	MAY	JUN	JUL	AUG	SEP	OCT	NOV	DEC
FLORIDA	219,905	18,282	16,462	17,777	17,496	17,744	17,167	18,932	19,234	19,238	19,393	18,091	20,089
ALACHUA	2,916	262	247	238	241	224	210	237	254	233	267	223	280
BAKER	365	27	34	27	26	43	32	24	33	39	26	23	31
BAY	2,328	192	184	170	172	179	183	225	206	198	199	195	225
BRADFORD	282	25	11	25	30	24	22	22	27	21	28	20	27
BREVARD	5,259	429	399	434	443	451	393	465	389	451	467	459	479
BROWARD	22,213	1,903	1,651	1,843	1,751	1,846	1,685	1,902	1,938	2,043	1,905	1,856	1,890
CALHOUN	131	8	17	10	13	11	8	13	8	9	10	10	14
CHARLOTTE	1,007	79	70	84	80	85	85	86	86	85	95	78	94
CITRUS	1,016	67	85	78	75	80	90	97	103	75	76	73	117
CLAY	2,083	152	140	164	161	185	172	175	179	212	185	160	198
COLLIER	3,288	265	282	255	255	283	242	278	278	272	312	261	305
COLUMBIA	832	73	51	67	60	74	65	79	64	78	75	72	74
MIAMI-DADE	31,990	2,671	2,375	2,607	2,522	2,600	2,446	2,694	2,779	2,795	2,832	2,667	3,002
DESOTO	384	35	32	34	36	34	20	28	42	23	32	32	36
DIXIE	169	18	11	14	10	20	15	13	10	16	12	15	15
DUVAL	12,514	1,066	898	968	1,066	981	926	1,074	1,074	1,099	1,166	1,034	1,162
ESCAMBIA	3,880	310	287	307	328	285	337	345	319	326	388	310	338
FLAGLER	833	76	45	67	74	63	73	65	69	74	83	78	66
FRANKLIN	100	6	9	7	7	7	8	9	9	14	5	9	10
GADSDEN	535	40	40	39	39	43	45	52	41	46	46	51	53
GILCHRIST	167	14	12	19	9	12	8	15	18	17	15	15	13
GLADES	60	6	7	6	3	4	5	8	1	6	5	3	6
GULF	117	13	11	3	13	8	9	12	10	10	11	13	4
HAMILTON	145	13	8	15	17	8	8	13	11	11	11	13	17
HARDEE	414	28	28	44	33	27	28	42	39	32	39	36	38
HENDRY	569	38	52	39	50	46	54	37	51	48	59	46	49
HERNANDO	1,488	128	104	116	108	135	116	134	140	119	124	110	154
HIGHLANDS	937	79	66	71	72	72	74	83	88	67	72	94	99
HILLSBOROUGH	16,846	1,379	1,295	1,341	1,322	1,353	1,315	1,486	1,495	1,470	1,476	1,351	1,563
HOLMES	207	13	13	17	18	19	18	17	16	17	19	22	18
INDIAN RIVER	1,282	103	105	125	86	105	103	95	121	103	105	110	121
JACKSON	514	43	51	40	34	42	28	41	45	44	50	48	48
JEFFERSON	127	14	10	13	8	12	4	13	14	7	10	12	10
LAFAYETTE	76	4	6	12	6	5	5	6	7	12	4	4	5
LAKE	3,166	276	247	266	264	227	259	267	277	276	286	244	277
LEE	6,352	559	474	473	458	500	539	515	586	556	544	548	600
LEON	3,085	242	221	258	240	265	229	329	251	237	280	270	263
LEVY	409	41	27	23	32	35	37	37	30	38	30	43	36
LIBERTY	92	5	8	8	3	6	9	7	15	12	5	6	8
MADISON	191	16	10	18	13	15	11	17	22	19	13	18	19
MANATEE	3,545	253	282	295	268	284	249	296	349	321	300	294	354
MARION	3,417	272	271	292	265	273	249	274	308	279	331	289	314
MARTIN	1,263	94	85	107	100	121	95	123	96	121	109	103	109
MONROE	749	60	57	57	48	66	78	63	70	64	70	52	64
NASSAU	745	46	53	74	74	65	61	55	69	59	51	69	69
OKALOOSA	2,827	230	205	221	237	212	201	247	267	272	247	216	272
OKEECHOBEE	553	53	48	44	46	42	50	51	37	41	48	38	55
ORANGE	16,221	1,370	1,201	1,345	1,314	1,261	1,265	1,397	1,396	1,423	1,477	1,286	1,486
OSCEOLA	4,195	362	319	344	299	332	348	343	387	392	336	356	377
PALM BEACH	14,433	1,205	1,081	1,122	1,142	1,188	1,179	1,261	1,288	1,256	1,227	1,167	1,317
PASCO	4,826	411	366	366	398	388	405	423	409	440	434	370	416
PINELLAS	8,519	701	635	693	677	703	693	732	736	718	757	734	740
POLK	7,608	626	587	615	622	596	582	670	672	692	648	623	675
PUTNAM	831	70	45	52	57	65	74	82	72	84	61	77	92
SAINT JOHNS	2,148	174	158	175	166	168	165	184	199	199	195	162	203
SAINT LUCIE	2,969	256	220	254	229	252	213	262	270	222	273	239	279
SANTA ROSA	1,822	178	126	173	143	154	133	152	141	138	154	154	176
SARASOTA	2,955	199	213	223	258	239	249	270	265	281	275	244	239
SEMINOLE	4,515	382	338	362	379	371	344	353	394	386	409	382	415
SUMTER	494	33	26	40	36	31	39	42	42	52	51	46	56
SUWANNEE	440	43	22	37	31	46	43	42	37	37	33	31	38
TAYLOR	217	16	14	21	16	23	18	17	21	18	17	16	20
UNION	154	15	11	26	12	9	11	17	14	6	10	15	8
VOLUSIA	4,767	412	383	382	387	360	391	403	429	416	396	374	434
WAKULLA	335	33	17	24	26	30	28	31	28	28	31	38	21
WALTON	725	52	58	67	59	39	69	64	64	57	67	62	67
WASHINGTON	243	18	17	18	27	10	18	20	26	23	18	22	26

TABLE B-10: RESIDENT LIVE BIRTHS BY MOTHER'S EDUCATION*, BY COUNTY, FLORIDA, 2014

	HIGHEST LEVEL/DEGREE OF EDUCATION COMPLETED									
	TOTAL	< 9TH GRADE	9TH-12TH NO DIPLOMA	HIGH SCHOOL DIPLOMA	SOME COLLEGE	ASSOCIATE DEGREE	BACHELOR DEGREE	MASTER DEGREE	DOCTORATE	UNK
FLORIDA	219,905	7,039	22,058	67,969	43,677	21,361	36,745	14,577	4,180	2,299
ALACHUA	2,916	27	235	587	590	298	613	337	219	10
BAKER	365	8	47	145	78	44	31	6	3	3
BAY	2,328	48	301	615	608	202	329	105	20	100
BRADFORD	282	6	45	114	64	24	25	4	0	0
BREVARD	5,259	90	447	1,274	1,383	691	900	370	70	34
BROWARD	22,213	470	2,092	6,022	4,205	2,322	4,330	2,007	567	198
CALHOUN	131	3	22	49	33	13	7	2	1	1
CHARLOTTE	1,007	7	111	362	254	102	110	34	11	16
CITRUS	1,016	21	141	413	243	105	62	18	5	8
CLAY	2,083	19	179	582	581	250	306	102	24	40
COLLIER	3,288	253	193	1,290	590	224	493	186	47	12
COLUMBIA	832	32	140	347	156	61	57	30	6	3
MIAMI-DADE	31,990	1,043	2,215	11,377	4,739	3,377	5,456	2,642	751	390
DESOTO	384	62	77	155	45	19	16	6	0	4
DIXIE	169	5	37	69	36	13	8	0	0	1
DUVAL	12,514	368	1,260	3,538	3,152	1,054	2,043	752	232	115
ESCAMBIA	3,880	51	488	1,724	415	418	525	182	57	20
FLAGLER	833	5	82	219	252	101	119	38	10	7
FRANKLIN	100	4	21	40	20	5	6	1	0	3
GADSDEN	535	35	101	154	140	27	36	20	1	21
GILCHRIST	167	7	25	67	42	13	10	2	0	1
GLADES	60	5	9	24	4	13	4	1	0	0
GULF	117	3	12	43	31	6	12	1	3	6
HAMILTON	145	24	30	57	15	9	8	1	0	1
HARDEE	414	60	100	154	54	28	14	3	0	1
HENDRY	569	51	129	262	75	21	20	5	0	6
HERNANDO	1,488	14	152	572	346	150	186	35	9	24
HIGHLANDS	937	46	199	305	200	93	59	23	8	4
HILLSBOROUGH	16,846	617	1,836	5,122	3,211	1,242	3,086	1,240	385	107
HOLMES	207	8	37	72	40	19	21	8	1	1
INDIAN RIVER	1,282	40	167	422	310	107	155	54	24	3
JACKSON	514	13	73	176	128	61	41	14	2	6
JEFFERSON	127	5	20	32	40	11	13	2	0	4
LAFAYETTE	76	3	12	38	12	6	5	0	0	0
LAKE	3,166	71	346	1,067	631	354	483	148	34	32
LEE	6,352	331	750	2,637	973	539	792	201	50	79
LEON	3,085	44	240	531	729	247	759	331	125	79
LEVY	409	16	55	180	83	30	34	11	0	0
LIBERTY	92	2	11	44	12	7	12	3	0	1
MADISON	191	4	33	48	57	18	21	6	2	2
MANATEE	3,545	233	543	1,139	579	320	475	162	51	43
MARION	3,417	81	507	1,100	947	312	294	129	30	17
MARTIN	1,263	152	142	278	241	117	217	90	20	6
MONROE	749	23	69	236	162	71	127	47	11	3
NASSAU	745	14	66	235	169	82	128	35	12	4
OKALOOSA	2,827	38	252	726	729	315	534	169	47	17
OKEECHOBEE	553	39	111	200	123	39	28	9	1	3
ORANGE	16,221	350	1,394	4,862	3,148	1,536	3,237	1,268	294	132
OSCEOLA	4,195	80	380	1,504	898	521	591	166	30	25
PALM BEACH	14,433	1,056	1,450	3,658	2,575	1,414	2,788	1,009	328	155
PASCO	4,826	54	444	1,469	1,091	465	846	325	54	78
PINELLAS	8,519	129	837	2,364	1,924	795	1,521	574	210	165
POLK	7,608	422	1,215	2,529	1,553	666	863	279	56	25
PUTNAM	831	39	158	334	177	55	51	11	3	3
SAINT JOHNS	2,148	7	97	407	497	203	618	215	90	14
SAINT LUCIE	2,969	127	354	884	725	355	359	106	36	23
SANTA ROSA	1,822	17	135	610	276	250	380	121	25	8
SARASOTA	2,955	22	227	1,124	536	282	483	155	46	80
SEMINOLE	4,515	60	282	980	978	493	1,105	465	97	55
SUMTER	494	24	87	200	93	35	38	13	2	2
SUWANNEE	440	22	85	181	93	34	20	4	1	0
TAYLOR	217	5	32	87	40	24	15	2	3	9
UNION	154	4	20	59	40	18	9	2	0	2
VOLUSIA	4,767	94	546	1,442	1,188	514	631	238	51	63
WAKULLA	335	3	29	101	90	44	37	20	3	8
WALTON	725	21	86	217	180	57	122	28	10	4
WASHINGTON	243	1	38	107	45	18	20	4	2	8

* Starting in 2004, "mother's education" is measured according to the highest level/degree completed, instead of highest grade completed.

TABLE B-10 (Cont.): WHITE RESIDENT LIVE BIRTHS BY MOTHER'S EDUCATION*, BY COUNTY, FLORIDA, 2014

	TOTAL	HIGHEST LEVEL/DEGREE OF EDUCATION COMPLETED									
		< 9TH GRADE	9TH-12TH NO DIPLOMA	HIGH SCHOOL DIPLOMA	SOME COLLEGE	ASSOCIATE DEGREE	BACHELOR DEGREE	MASTER DEGREE	DOCTORATE	UNK	
FLORIDA	156,999	5,865	13,968	45,088	30,524	16,001	29,442	11,420	3,177	1,514	
ALACHUA	1,730	25	76	239	331	218	447	235	152	7	
BAKER	318	8	42	127	65	37	28	5	3	3	
BAY	1,777	33	217	449	456	160	298	89	16	59	
BRADFORD	226	6	35	95	46	20	22	2	0	0	
BREVARD	4,111	71	303	906	1,087	572	766	317	60	29	
BROWARD	11,947	268	792	2,748	2,136	1,266	2,926	1,334	365	112	
CALHOUN	117	3	19	45	27	13	7	2	1	0	
CHARLOTTE	889	7	96	324	218	87	104	28	11	14	
CITRUS	948	19	127	392	226	102	52	17	5	8	
CLAY	1,741	15	160	496	466	215	256	89	19	25	
COLLIER	2,749	243	161	1,045	474	184	425	165	42	10	
COLUMBIA	653	30	117	246	129	54	48	22	4	3	
MIAMI-DADE	23,765	919	1,322	7,536	3,481	2,682	4,664	2,287	657	217	
DESOTO	334	60	65	132	40	16	13	5	0	3	
DIXIE	158	5	34	65	33	12	8	0	0	1	
DUVAL	6,992	233	515	1,662	1,737	622	1,463	513	170	77	
ESCAMBIA	2,461	35	239	962	277	303	437	149	44	15	
FLAGLER	661	4	55	169	200	85	105	31	9	3	
FRANKLIN	90	4	20	35	18	4	6	1	0	2	
GADSDEN	197	32	30	49	42	17	15	8	0	4	
GILCHRIST	154	7	24	57	41	13	9	2	0	1	
GLADES	46	4	8	15	4	12	3	0	0	0	
GULF	97	2	11	38	24	6	10	1	2	3	
HAMILTON	97	17	22	31	11	9	5	1	0	1	
HARDEE	385	58	97	138	51	24	13	3	0	1	
HENDRY	490	51	117	222	59	17	16	3	0	5	
HERNANDO	1,290	12	139	491	302	133	158	27	6	22	
HIGHLANDS	745	45	146	228	166	81	49	22	4	4	
HILLSBOROUGH	12,268	578	1,303	3,458	2,268	940	2,424	936	282	79	
HOLMES	195	7	32	71	39	17	19	8	1	1	
INDIAN RIVER	790	7	73	221	204	80	138	48	17	2	
JACKSON	348	11	46	115	86	44	29	12	2	3	
JEFFERSON	62	3	8	11	19	8	10	2	0	1	
LAFAYETTE	71	3	11	35	11	6	5	0	0	0	
LAKE	2,550	65	274	834	520	285	414	115	25	18	
LEE	5,194	313	571	2,035	821	478	686	185	40	65	
LEON	1,616	17	65	242	289	138	520	231	90	24	
LEVY	355	13	45	154	72	27	34	10	0	0	
LIBERTY	84	2	10	38	11	7	12	3	0	1	
MADISON	104	3	10	28	24	13	19	5	2	0	
MANATEE	2,773	166	406	839	436	278	425	142	45	36	
MARION	2,646	73	382	824	728	244	253	104	21	17	
MARTIN	1,098	142	125	218	207	106	195	83	18	4	
MONROE	618	21	44	186	131	63	116	43	11	3	
NASSAU	681	14	55	216	153	74	123	31	11	4	
OKALOOSA	2,301	35	212	559	571	268	457	143	41	15	
OKEECHOBEE	479	36	93	167	111	36	25	8	1	2	
ORANGE	10,407	277	726	2,816	1,941	1,013	2,435	925	190	84	
OSCEOLA	3,451	73	334	1,244	753	417	469	123	23	15	
PALM BEACH	9,369	868	768	1,976	1,552	913	2,167	790	247	88	
PASCO	4,268	50	408	1,328	971	410	728	266	37	70	
PINELLAS	6,209	110	521	1,532	1,398	641	1,267	472	167	101	
POLK	5,806	382	886	1,832	1,145	541	733	230	39	18	
PUTNAM	623	36	124	228	130	44	48	9	2	2	
SAINT JOHNS	1,856	4	69	319	433	184	569	188	78	12	
SAINT LUCIE	1,978	104	206	537	478	247	290	73	27	16	
SANTA ROSA	1,625	15	119	546	237	225	345	107	24	7	
SARASOTA	2,564	20	178	959	462	251	441	146	41	66	
SEMINOLE	3,451	44	173	688	750	391	927	364	68	46	
SUMTER	395	20	67	152	81	30	30	13	2	0	
SUWANNEE	363	21	69	140	82	31	15	4	1	0	
TAYLOR	169	5	22	66	30	23	14	1	1	7	
UNION	131	3	16	49	35	16	8	2	0	2	
VOLUSIA	3,744	82	396	1,098	915	436	529	191	42	55	
WAKULLA	299	3	22	92	82	40	35	17	2	6	
WALTON	673	21	76	200	162	57	117	28	8	4	
WASHINGTON	203	1	33	87	38	14	17	4	1	8	

* Starting in 2004, "mother's education" is measured according to the highest level/degree completed, instead of highest grade completed.

TABLE B-10 (Cont.): BLACK RESIDENT LIVE BIRTHS BY MOTHER'S EDUCATION*, BY COUNTY, FLORIDA, 2014

	HIGHEST LEVEL/DEGREE OF EDUCATION COMPLETED										
	TOTAL	< 9TH GRADE	9TH-12TH NO DIPLOMA	HIGH SCHOOL DIPLOMA	SOME COLLEGE	ASSOCIATE DEGREE	BACHELOR DEGREE	MASTER DEGREE	DOCTORATE	UNK	
FLORIDA	49,059	758	7,151	19,819	10,779	4,058	4,063	1,597	383	451	
ALACHUA	889	2	148	327	234	64	79	26	8	1	
BAKER	35	0	3	17	8	4	3	0	0	0	
BAY	329	7	59	114	84	27	10	5	1	22	
BRADFORD	52	0	10	18	17	4	3	0	0	0	
BREVARD	792	11	118	283	222	82	55	19	2	0	
BROWARD	8,498	116	1,178	2,950	1,816	885	971	397	115	70	
CALHOUN	13	0	2	4	6	0	0	0	0	1	
CHARLOTTE	81	0	9	30	26	10	2	2	0	2	
CITRUS	37	0	4	18	13	0	1	1	0	0	
CLAY	208	0	10	58	83	24	19	6	3	5	
COLLIER	382	8	27	209	82	26	24	3	1	2	
COLUMBIA	156	2	21	93	25	7	5	3	0	0	
MIAMI-DADE	7,059	108	842	3,608	1,128	579	513	203	36	42	
DESOTO	41	0	12	20	4	3	1	1	0	0	
DIXIE	9	0	2	4	2	1	0	0	0	0	
DUVAL	4,387	65	680	1,621	1,190	331	332	112	29	27	
ESCAMBIA	1,183	14	229	659	111	87	55	20	5	3	
FLAGLER	112	0	20	36	34	11	6	4	1	0	
FRANKLIN	10	0	1	5	2	1	0	0	0	1	
GADSDEN	331	3	71	102	96	10	21	12	0	16	
GILCHRIST	10	0	1	8	1	0	0	0	0	0	
GLADES	10	0	0	7	0	1	1	1	0	0	
GULF	13	0	1	3	6	0	1	0	0	2	
HAMILTON	47	6	8	26	4	0	3	0	0	0	
HARDEE	20	1	2	13	2	2	0	0	0	0	
HENDRY	61	0	9	29	15	3	3	2	0	0	
HERNANDO	116	0	10	55	32	7	9	3	0	0	
HIGHLANDS	152	1	47	65	26	8	3	1	1	0	
HILLSBOROUGH	3,497	33	497	1,479	777	223	309	121	37	21	
HOLMES	4	1	1	0	1	0	1	0	0	0	
INDIAN RIVER	230	2	29	109	68	10	9	1	1	1	
JACKSON	150	0	25	56	39	16	10	1	0	3	
JEFFERSON	63	2	12	21	19	3	3	0	0	3	
LAFAYETTE	5	0	1	3	1	0	0	0	0	0	
LAKE	422	3	56	189	69	48	27	17	3	10	
LEE	950	17	166	528	115	47	60	8	4	5	
LEON	1,284	25	168	260	409	100	178	68	26	50	
LEVY	43	2	10	18	10	3	0	0	0	0	
LIBERTY	7	0	1	5	1	0	0	0	0	0	
MADISON	86	1	23	19	33	5	2	1	0	2	
MANATEE	455	3	89	215	91	27	15	9	3	3	
MARION	633	5	106	240	185	56	19	18	4	0	
MARTIN	108	4	12	45	27	10	8	1	0	1	
MONROE	88	1	23	38	17	4	3	2	0	0	
NASSAU	42	0	8	17	8	5	2	1	1	0	
OKALOOSA	325	0	29	114	104	31	35	11	0	1	
OKEECHOBEE	30	0	8	15	5	1	0	1	0	0	
ORANGE	4,399	55	605	1,741	979	378	406	179	25	31	
OSCEOLA	466	5	35	184	100	60	56	22	3	1	
PALM BEACH	4,187	172	649	1,514	886	400	369	116	29	52	
PASCO	314	1	23	96	76	26	54	30	5	3	
PINELLAS	1,483	8	240	633	381	76	81	22	7	35	
POLK	1,495	30	291	612	350	96	70	33	8	5	
PUTNAM	178	3	29	96	41	6	0	2	1	0	
SAINT JOHNS	161	1	25	67	37	9	10	8	3	1	
SAINT LUCIE	810	18	131	315	194	78	43	22	5	4	
SANTA ROSA	89	0	6	33	16	13	12	8	0	1	
SARASOTA	239	0	36	123	46	15	10	1	2	6	
SEMINOLE	694	11	90	232	156	70	78	44	7	6	
SUMTER	82	3	17	43	11	3	5	0	0	0	
SUWANNEE	63	0	13	37	9	1	3	0	0	0	
TAYLOR	45	0	10	18	10	1	1	1	2	2	
UNION	21	0	4	10	4	2	1	0	0	0	
VOLUSIA	780	8	138	276	211	51	60	25	4	7	
WAKULLA	33	0	7	8	7	4	2	3	0	2	
WALTON	30	0	9	11	9	0	1	0	0	0	
WASHINGTON	30	0	4	16	6	3	0	0	1	0	

* Starting in 2004, "mother's education" is measured according to the highest level/degree completed, instead of highest grade completed.

TABLE B-10 (Cont.): OTHER RESIDENT LIVE BIRTHS BY MOTHER'S EDUCATION*, BY COUNTY, FLORIDA, 2014

	TOTAL	HIGHEST LEVEL/DEGREE OF EDUCATION COMPLETED									
		< 9TH GRADE	9TH-12TH NO DIPLOMA	HIGH SCHOOL DIPLOMA	SOME COLLEGE	ASSOCIATE DEGREE	BACHELOR DEGREE	MASTER DEGREE	DOCTORATE	UNK	
FLORIDA	12,712	351	794	2,821	2,216	1,222	3,117	1,478	595	118	
ALACHUA	293	0	11	20	25	15	85	76	59	2	
BAKER	12	0	2	1	5	3	0	1	0	0	
BAY	176	2	18	38	59	14	20	9	3	13	
BRADFORD	4	0	0	1	1	0	0	2	0	0	
BREVARD	349	6	26	82	74	37	79	34	8	3	
BROWARD	1,673	81	115	305	235	162	419	265	84	7	
CALHOUN	1	0	1	0	0	0	0	0	0	0	
CHARLOTTE	37	0	6	8	10	5	4	4	0	0	
CITRUS	30	2	9	3	4	3	9	0	0	0	
CLAY	123	4	9	27	32	11	31	6	2	1	
COLLIER	155	2	5	35	34	14	43	18	4	0	
COLUMBIA	23	0	2	8	2	0	4	5	2	0	
MIAMI-DADE	831	9	37	187	95	88	231	115	47	22	
DESOTO	8	2	0	3	1	0	2	0	0	0	
DIXIE	2	0	1	0	1	0	0	0	0	0	
DUVAL	1,111	70	65	252	220	97	246	126	32	3	
ESCAMBIA	235	2	20	103	27	27	33	13	8	2	
FLAGLER	56	1	7	14	18	5	6	3	0	2	
FRANKLIN	0	0	0	0	0	0	0	0	0	0	
GADSDEN	7	0	0	3	2	0	0	0	1	1	
GILCHRIST	3	0	0	2	0	0	1	0	0	0	
GLADES	4	1	1	2	0	0	0	0	0	0	
GULF	7	1	0	2	1	0	1	0	1	1	
HAMILTON	1	1	0	0	0	0	0	0	0	0	
HARDEE	9	1	1	3	1	2	1	0	0	0	
HENDRY	18	0	3	11	1	1	1	0	0	1	
HERNANDO	78	2	3	26	12	9	18	4	3	1	
HIGHLANDS	37	0	5	11	7	4	7	0	3	0	
HILLSBOROUGH	1,058	5	33	183	159	79	347	183	66	3	
HOLMES	8	0	4	1	0	2	1	0	0	0	
INDIAN RIVER	39	0	4	17	7	4	3	2	2	0	
JACKSON	15	2	2	4	3	1	2	1	0	0	
JEFFERSON	2	0	0	0	2	0	0	0	0	0	
LAFAYETTE	0	0	0	0	0	0	0	0	0	0	
LAKE	192	3	15	43	42	21	42	16	6	4	
LEE	190	1	12	71	35	12	44	8	6	1	
LEON	185	2	7	29	31	9	61	32	9	5	
LEVY	10	0	0	8	1	0	0	1	0	0	
LIBERTY	1	0	0	1	0	0	0	0	0	0	
MADISON	1	0	0	1	0	0	0	0	0	0	
MANATEE	301	64	47	82	51	15	29	10	3	0	
MARION	137	3	19	35	34	12	22	7	5	0	
MARTIN	51	4	3	14	7	1	14	6	2	0	
MONROE	43	1	2	12	14	4	8	2	0	0	
NASSAU	20	0	3	1	7	3	3	3	0	0	
OKALOOSA	192	3	8	50	53	15	42	14	6	1	
OKEECHOBEE	27	1	3	12	7	1	3	0	0	0	
ORANGE	1,404	18	62	303	228	145	396	164	79	9	
OSCEOLA	270	2	11	76	45	44	66	21	4	1	
PALM BEACH	855	15	30	166	134	100	251	100	52	7	
PASCO	221	3	11	40	41	26	59	28	12	1	
PINELLAS	678	10	58	166	117	68	151	61	30	17	
POLK	302	10	37	84	57	29	59	16	9	1	
PUTNAM	30	0	5	10	6	5	3	0	0	1	
SAINT JOHNS	128	2	3	20	27	10	38	19	9	0	
SAINT LUCIE	156	2	12	29	46	27	25	10	4	1	
SANTA ROSA	105	1	9	31	23	12	22	6	1	0	
SARASOTA	138	1	10	39	25	16	32	8	3	4	
SEMINOLE	364	5	19	58	70	31	99	57	22	3	
SUMTER	15	1	3	5	1	2	3	0	0	0	
SUWANNEE	14	1	3	4	2	2	2	0	0	0	
TAYLOR	3	0	0	3	0	0	0	0	0	0	
UNION	2	1	0	0	1	0	0	0	0	0	
VOLUSIA	239	3	11	67	62	27	42	22	5	0	
WAKULLA	3	0	0	1	1	0	0	0	1	0	
WALTON	21	0	1	5	9	0	4	0	2	0	
WASHINGTON	8	0	0	3	1	1	3	0	0	0	

* Starting in 2004, "mother's education" is measured according to the highest level/degree completed, instead of highest grade completed.

TABLE B-11: RESIDENT LIVE BIRTHS TO MOTHERS UNDER 15 YEARS OF AGE FOR SELECTED INDICATORS,
BY COUNTY, FLORIDA, 2014

	TOTAL	UNWED	BIRTHWEIGHT		THIRD TRIMESTER OR NO PRENATAL CARE*	ONE OR MORE PREVIOUS LIVE BIRTHS
			UNDER 1,500 GRAMS	UNDER 2,500 GRAMS		
FLORIDA	142	140	4	12	21	0
ALACHUA	0	0	0	0	0	0
BAKER	0	0	0	0	0	0
BAY	1	1	0	0	0	0
BRADFORD	1	1	0	0	0	0
BREVARD	3	3	0	0	3	0
BROWARD	6	6	0	1	1	0
CALHOUN	0	0	0	0	0	0
CHARLOTTE	0	0	0	0	0	0
CITRUS	0	0	0	0	0	0
CLAY	0	0	0	0	0	0
COLLIER	0	0	0	0	0	0
COLUMBIA	0	0	0	0	0	0
MIAMI-DADE	12	11	1	1	3	0
DESOTO	0	0	0	0	0	0
DIXIE	0	0	0	0	0	0
DUVAL	12	12	0	2	3	0
ESCAMBIA	5	5	0	1	0	0
FLAGLER	0	0	0	0	0	0
FRANKLIN	0	0	0	0	0	0
GADSDEN	1	1	0	0	0	0
GILCHRIST	0	0	0	0	0	0
GLADES	0	0	0	0	0	0
GULF	0	0	0	0	0	0
HAMILTON	1	1	0	0	0	0
HARDEE	1	1	0	0	0	0
HENDRY	0	0	0	0	0	0
HERNANDO	0	0	0	0	0	0
HIGHLANDS	0	0	0	0	0	0
HILLSBOROUGH	17	16	0	2	0	0
HOLMES	1	1	0	0	0	0
INDIAN RIVER	0	0	0	0	0	0
JACKSON	0	0	0	0	0	0
JEFFERSON	0	0	0	0	0	0
LAFAYETTE	0	0	0	0	0	0
LAKE	1	1	0	0	0	0
LEE	4	4	1	1	0	0
LEON	5	5	0	0	0	0
LEVY	1	1	0	0	0	0
LIBERTY	0	0	0	0	0	0
MADISON	0	0	0	0	0	0
MANATEE	5	5	0	0	2	0
MARION	6	6	0	1	1	0
MARTIN	2	2	0	0	0	0
MONROE	1	1	0	0	1	0
NASSAU	0	0	0	0	0	0
OKALOOSA	2	2	0	0	0	0
OKEECHOBEE	1	1	0	0	0	0
ORANGE	9	9	1	1	3	0
OSCEOLA	5	5	0	0	0	0
PALM BEACH	14	14	1	1	2	0
PASCO	2	2	0	0	0	0
PINELLAS	8	8	0	0	1	0
POLK	4	4	0	0	1	0
PUTNAM	1	1	0	0	0	0
SAINT JOHNS	0	0	0	0	0	0
SAINT LUCIE	1	1	0	0	0	0
SANTA ROSA	1	1	0	0	0	0
SARASOTA	2	2	0	0	0	0
SEMINOLE	4	4	0	0	0	0
SUMTER	0	0	0	0	0	0
SUWANNEE	1	1	0	0	0	0
TAYLOR	0	0	0	0	0	0
UNION	0	0	0	0	0	0
VOLUSIA	1	1	0	1	0	0
WAKULLA	0	0	0	0	0	0
WALTON	0	0	0	0	0	0
WASHINGTON	0	0	0	0	0	0

* Starting in 2004, "trimester prenatal care began" is calculated as the time elapsed from the date of the last menstrual period to the date of the first prenatal care visit. Prior to 2004, these data were obtained by direct question that noted the trimester the mother began prenatal care. Consequently, these data are not comparable to data from prior years.

TABLE B-12: RESIDENT LIVE BIRTHS TO MOTHERS 15 THROUGH 19 YEARS OF AGE FOR SELECTED INDICATORS, AND AGE-SPECIFIC BIRTH RATES PER 1,000 FEMALES, BY COUNTY, FLORIDA, 2014

	TOTAL	BIRTHWEIGHT				THIRD TRIMESTER OR NO PRENATAL CARE NUMBER ¹		ONE OR MORE PREVIOUS LIVE BIRTHS		AGE-SPECIFIC BIRTH RATE	POPULATION 15-19 FEMALES		
		UNWED		UNDER 1,500 GRAMS		UNDER 2,500 GRAMS		NUMBER	%				
		NUMBER	%	NUMBER	%	NUMBER	%						
FLORIDA	12,811	11,701	91.3	271	2.1	1,256	9.8	976	8.4	2,113	16.5	21.9	585,049
ALACHUA	147	137	93.2	8	5.4	22	15.0	8	5.8	15	10.2	11.7	12,592
BAKER	50	42	84.0	3	6.0	5	10.0	2	4.3	8	16.0	59.7	837
BAY	179	158	88.3	9	5.0	14	7.8	16	10.5	18	10.1	35.5	5,039
BRADFORD	31	29	93.5	0	0.0	2	6.5	4	13.8	8	25.8	47.3	655
BREVARD	283	254	89.8	6	2.1	25	8.8	16	6.0	38	13.4	18.9	14,966
BROWARD	906	842	92.9	22	2.4	93	10.3	126	15.5	164	18.1	16.7	54,169
CALHOUN	22	20	90.9	1	4.5	3	13.6	0	0.0	1	4.5	54.6	403
CHARLOTTE	75	68	90.7	0	0.0	5	6.7	10	14.3	11	14.7	23.4	3,211
CITRUS	89	81	91.0	1	1.1	5	5.6	5	5.8	18	20.2	29.3	3,037
CLAY	135	124	91.9	3	2.2	19	14.1	9	6.9	13	9.6	19.6	6,902
COLLIER	189	169	89.4	2	1.1	13	6.9	18	10.1	31	16.4	21.8	8,652
COLUMBIA	96	79	82.3	1	1.0	4	4.2	4	4.7	14	14.6	51.3	1,872
MIAMI-DADE	1,318	1,231	93.4	38	2.9	160	12.1	60	5.0	207	15.7	16.5	79,907
DESOTO	49	44	89.8	0	0.0	4	8.2	5	12.2	4	8.2	53.0	924
DIXIE	13	13	100.0	0	0.0	0	0.0	2	20.0	1	7.7	33.9	383
DUVAL	778	726	93.3	17	2.2	92	11.8	86	12.2	120	15.4	27.3	28,488
ESCAMBIA	312	283	90.7	6	1.9	32	10.3	16	6.0	67	21.5	32.1	9,722
FLAGLER	56	54	96.4	0	0.0	4	7.1	0	0.0	6	10.7	20.8	2,686
FRANKLIN	14	11	78.6	0	0.0	1	7.1	0	0.0	2	14.3	59.6	235
GADSDEN	45	44	97.8	0	0.0	3	6.7	7	18.9	13	28.9	33.6	1,341
GILCHRIST	18	17	94.4	0	0.0	0	0.0	2	13.3	2	11.1	37.2	484
GLADES	10	8	80.0	0	0.0	0	0.0	2	22.2	2	20.0	33.6	298
GULF	11	10	90.9	0	0.0	0	0.0	1	11.1	0	0.0	31.3	351
HAMILTON	13	11	84.6	0	0.0	2	15.4	1	7.7	3	23.1	34.9	373
HARDEE	60	48	80.0	2	3.3	6	10.0	6	10.7	10	16.7	65.8	912
HENDRY	56	51	91.1	0	0.0	5	8.9	2	3.8	9	16.1	42.3	1,324
HERNANDO	91	77	84.6	1	1.1	3	3.3	6	7.6	16	17.6	19.3	4,713
HIGHLANDS	90	79	87.8	2	2.2	8	8.9	18	20.9	16	17.8	39.6	2,270
HILLSBOROUGH	1,057	974	92.1	23	2.2	112	10.6	36	3.5	200	18.9	24.0	43,989
HOLMES	29	21	72.4	0	0.0	4	13.8	1	4.0	4	13.8	55.4	523
INDIAN RIVER	81	74	91.4	1	1.2	4	4.9	8	10.1	16	19.8	22.8	3,550
JACKSON	51	42	82.4	1	2.0	4	7.8	1	2.0	3	5.9	40.8	1,250
JEFFERSON	4	4	100.0	0	0.0	1	25.0	1	33.3	0	0.0	12.3	326
LAFAYETTE	6	5	83.3	0	0.0	0	0.0	0	0.0	0	0.0	27.3	220
LAKE	238	217	91.2	6	2.5	25	10.5	23	10.7	43	18.1	29.0	8,193
LEE	435	398	91.5	10	2.3	43	9.9	46	11.0	63	14.5	24.8	17,510
LEON	185	172	93.0	1	0.5	18	9.7	15	11.4	35	18.9	12.4	14,926
LEVY	33	28	84.8	0	0.0	2	6.1	4	13.8	7	21.2	30.4	1,084
LIBERTY	7	6	85.7	0	0.0	1	14.3	0	0.0	1	14.3	34.0	206
MADISON	10	7	70.0	0	0.0	2	20.0	0	0.0	1	10.0	19.8	505
MANATEE	300	276	92.0	5	1.7	19	6.3	25	8.6	65	21.7	32.8	9,150
MARION	272	242	89.0	9	3.3	34	12.5	36	14.3	46	16.9	32.0	8,499
MARTIN	79	66	83.5	2	2.5	7	8.9	10	13.5	17	21.5	21.3	3,704
MONROE	31	27	87.1	0	0.0	1	3.2	6	20.7	3	9.7	21.4	1,449
NASSAU	46	41	89.1	1	2.2	4	8.7	2	4.5	5	10.9	20.7	2,225
OKALOOSA	147	120	81.6	5	3.4	17	11.6	9	7.2	32	21.8	26.3	5,595
OKEECHOBEE	57	54	94.7	1	1.8	1	1.8	2	3.7	11	19.3	48.2	1,183
ORANGE	884	814	92.1	19	2.1	100	11.3	58	7.8	139	15.7	19.9	44,519
OSCEOLA	325	290	89.2	4	1.2	29	8.9	24	8.4	50	15.4	30.5	10,673
PALM BEACH	660	615	93.2	9	1.4	47	7.1	65	10.7	118	17.9	17.4	38,031
PASCO	290	268	92.4	7	2.4	36	12.4	12	4.4	41	14.1	21.4	13,533
PINELLAS	468	441	94.2	12	2.6	51	10.9	35	8.2	69	14.7	20.4	22,889
POLK	647	593	91.7	16	2.5	54	8.3	33	5.7	118	18.2	33.8	19,121
PUTNAM	96	86	89.6	4	4.2	16	16.7	7	7.8	24	25.0	47.4	2,026
SAINT JOHNS	70	66	94.3	1	1.4	7	10.0	4	6.2	6	8.6	10.5	6,687
SAINT LUCIE	169	150	88.8	0	0.0	14	8.3	17	10.2	26	15.4	20.4	8,291
SANTA ROSA	106	90	84.9	2	1.9	6	5.7	7	7.3	14	13.2	21.3	4,988
SARASOTA	171	159	93.0	2	1.2	5	2.9	8	4.9	20	11.7	19.9	8,584
SEMINOLE	173	159	91.9	0	0.0	11	6.4	10	6.3	28	16.2	11.8	14,703
SUMTER	48	42	87.5	0	0.0	8	16.7	2	4.5	9	18.8	39.8	1,206
SUWANNEE	48	41	85.4	1	2.1	4	8.3	6	14.0	18	37.5	38.9	1,234
TAYLOR	22	21	95.5	0	0.0	0	0.0	2	18.2	5	22.7	39.8	553
UNION	12	10	83.3	1	8.3	3	25.0	0	0.0	1	8.3	31.5	381
VOLUSIA	313	285	91.1	4	1.3	27	8.6	22	7.9	41	13.1	22.6	13,870
WAKULLA	26	22	84.6	0	0.0	2	7.7	1	5.0	6	23.1	30.9	842
WALTON	47	41	87.2	1	2.1	3	6.4	3	7.5	7	14.9	33.0	1,426
WASHINGTON	30	23	76.7	1	3.3	4	13.3	2	8.7	3	10.0	45.5	659

1. Starting in 2004, "trimester prenatal care began" is the time elapsed from the date of the last menstrual period to the date of the first prenatal care visit. Prior to 2004, these data were obtained by direct question that noted the trimester the mother began prenatal care. Consequently, these data are not comparable to data from prior years.

2. Births with unknown information as to when prenatal care began are excluded from the denominator.