

Marriages and Dissolutions of Marriage

**CHART M-1: MARRIAGES AND DISSOLUTIONS OF MARRIAGE,
AND RATES PER 1,000 POPULATION, FLORIDA AND UNITED
STATES, CENSUS YEARS 1920-1990 AND 2004-2014**

YEAR	MARRIAGES			DISSOLUTIONS ¹		
	FLORIDA		U.S.	FLORIDA		U.S.
	NUMBER	RATE	RATE	NUMBER	RATE	RATE
1920	NA	NA	12.0	NA	NA	1.6
1930	17,147	11.7	9.2	3,262	2.5	1.6
1940	32,709	17.1	12.1	11,061	5.8	2.0
1950	27,588	9.8	11.1	17,845	6.3	2.6
1960	39,315	7.9	8.5	19,326	3.9	2.2
1970	70,244	10.3	10.6	37,556	5.5	3.5
1980	108,344	11.0	10.6	71,590	7.3	5.2
1990	141,816	10.9	9.8	81,122	6.2	4.7
2000	145,300	9.0	8.2 ²	81,493	5.1	4.0 ²
2004	154,453	8.8	7.8 ²	83,306	4.8	3.7 ²
2005	158,192	8.8	7.6 ²	81,287	4.5	3.6 ²
2006	158,167	8.7	7.5 ²	85,955	4.7	3.7 ²
2007	155,998	8.4	7.3 ²	84,386	4.6	3.6 ²
2008	147,888	7.9	7.1 ²	79,868	4.3	3.5 ²
2009	139,127	7.4	6.8 ²	78,752	4.2	3.5 ²
2010	137,250	7.3	6.8 ²	83,342	4.4	3.6 ²
2011	140,900	7.4	6.8 ²	84,785	4.5	3.6 ²
2012	140,467	7.4	6.8 ²	81,490	4.3	3.4 ²
2013	137,127	7.1	NA	80,619	4.2	NA
2014	145,250	7.4	NA	79,432	4.1	NA

¹ Includes divorces and annulments.
² Provisional data.

**GRAPH M-1: MARRIAGES AND DISSOLUTIONS OF MARRIAGE RATES PER 1,000 POPULATION,
FLORIDA AND UNITED STATES, 2004-2014**

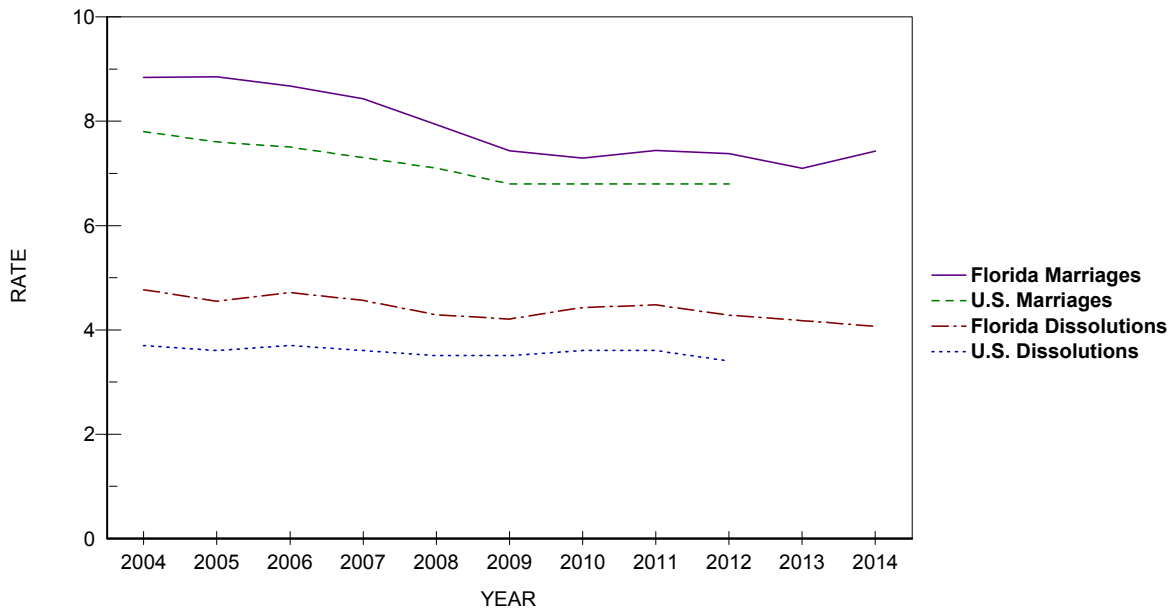


TABLE M-1: MARRIAGES PERFORMED BY MONTH, BY COUNTY OF ISSUANCE, FLORIDA, 2014

	TOTAL	JAN	FEB	MAR	APR	MAY	JUN	JUL	AUG	SEP	OCT	NOV	DEC
FLORIDA	145,249	8,429	11,029	14,232	13,340	14,506	12,791	11,276	10,754	9,956	13,522	12,262	13,152
ALACHUA	1,648	91	128	191	140	176	141	118	112	105	141	138	167
BAKER	227	5	18	24	24	26	13	18	17	22	25	18	17
BAY	2,397	71	120	154	228	250	334	274	232	210	248	146	130
BRADFORD	201	4	11	25	17	21	22	14	13	18	17	20	19
BREVARD	4,378	303	332	409	389	458	340	314	302	310	411	386	424
BROWARD	13,287	914	1,077	1,427	1,151	1,168	1,125	992	1,030	874	1,095	1,144	1,290
CALHOUN	95	7	5	4	14	12	5	6	6	6	16	6	8
CHARLOTTE	1,037	80	95	86	103	95	75	81	66	61	88	99	108
CITRUS	732	44	59	71	66	72	56	59	42	47	65	75	76
CLAY	1,357	73	96	137	124	143	113	128	84	105	125	119	110
COLLIER	2,877	161	199	255	275	330	263	202	175	171	254	281	311
COLUMBIA	519	32	36	50	47	46	49	54	21	29	36	51	68
MIAMI-DADE	20,015	1,387	1,735	1,998	1,771	1,771	1,591	1,528	1,623	1,430	1,638	1,640	1,903
DESOTO	210	16	22	32	17	16	23	12	10	10	15	17	20
DIXIE	88	4	10	14	16	7	7	4	6	4	5	7	4
DUVAL	6,304	328	459	624	586	632	564	484	467	444	596	544	576
ESCAMBIA	3,273	144	194	295	314	389	364	294	296	220	323	202	238
FLAGLER	583	38	33	49	57	67	51	48	44	43	74	35	44
FRANKLIN	169	7	7	14	16	25	22	24	14	13	16	5	6
GADSDEN	164	8	14	19	18	12	17	19	14	12	17	7	7
GILCHRIST	251	10	16	26	23	20	27	25	21	15	27	21	20
GLADES	44	5	5	3	3	4	3	3	1	1	2	7	7
GULF	208	3	13	9	9	31	38	24	21	16	19	13	12
HAMILTON	114	7	7	14	11	12	11	6	6	4	16	12	8
HARDEE	146	16	9	12	14	10	10	11	16	12	11	13	12
HENDRY	273	20	21	28	23	16	26	26	18	23	18	22	32
HERNANDO	918	55	63	92	82	75	62	79	64	52	94	88	112
HIGHLANDS	570	33	46	65	46	44	48	43	35	32	53	59	66
HILLSBOROUGH	9,140	517	683	975	872	917	707	676	635	609	835	846	868
HOLMES	138	8	7	17	9	11	13	9	8	10	16	21	9
INDIAN RIVER	839	49	88	87	66	107	75	68	54	54	89	71	31
JACKSON	290	12	18	28	17	37	32	26	31	21	30	18	20
JEFFERSON	68	4	8	12	10	6	10	7	5	5	1	0	0
LAFAYETTE	52	3	5	8	5	4	2	4	3	2	7	0	9
LAKE	3,054	131	214	275	284	318	258	240	214	227	336	279	278
LEE	4,547	253	344	425	426	487	412	320	271	285	426	414	484
LEON	1,743	97	104	194	159	198	159	114	143	110	176	139	150
LEVY	212	12	13	33	21	14	17	19	12	10	17	25	19
LIBERTY	59	2	4	9	6	5	9	4	2	5	7	3	3
MADISON	145	5	19	16	10	16	16	9	7	8	11	12	16
MANATEE	2,017	116	137	197	217	198	174	168	111	127	203	184	185
MARION	2,124	106	149	231	206	210	187	180	158	124	198	185	190
MARTIN	1,011	78	73	89	97	126	92	53	73	64	75	90	101
MONROE	2,803	185	211	239	277	336	263	205	195	161	261	205	265
NASSAU	802	33	33	72	81	105	79	67	63	62	74	80	53
OKALOOSA	3,216	106	131	217	288	393	447	352	300	309	377	163	133
OKEECHOBEE	238	19	21	24	19	24	20	20	15	15	17	21	23
ORANGE	9,664	568	793	981	862	926	796	725	734	663	893	824	899
OSCEOLA	3,466	198	272	336	304	337	292	275	272	277	346	255	302
PALM BEACH	8,446	548	701	823	763	848	692	623	633	523	722	725	845
PASCO	2,393	150	207	241	240	199	221	170	144	176	212	219	214
PINELLAS	7,064	357	538	683	650	784	633	506	479	472	755	625	582
POLK	3,784	200	341	419	347	363	305	282	262	244	318	338	365
PUTNAM	427	25	35	54	39	36	42	39	35	26	33	37	26
SAINT JOHNS	1,600	93	84	141	152	156	146	128	130	116	175	125	154
SAINT LUCIE	1,461	91	123	145	137	127	123	120	108	104	123	113	147
SANTA ROSA	994	42	59	94	98	101	98	78	81	88	118	66	71
SARASOTA	2,661	136	201	238	278	294	253	179	161	155	272	241	253
SEMINOLE	2,748	155	213	268	264	294	216	210	190	157	284	259	238
SUMTER	304	11	31	35	28	25	24	20	20	22	39	25	24
SUWANNEE	200	12	11	20	23	11	16	10	19	17	20	16	25
TAYLOR	130	7	10	11	14	10	13	8	4	7	16	16	14
UNION	109	13	11	9	7	10	14	6	9	9	11	6	4
VOLUSIA	3,302	180	238	333	309	300	284	275	228	220	337	292	306
WAKULLA	224	17	17	20	19	22	25	20	25	8	21	18	12
WALTON	1,551	19	43	91	138	212	214	159	154	164	210	116	31
WASHINGTON	138	5	9	15	14	11	12	12	10	11	16	15	8

TABLE M-2: MARRIAGES BY RACE OF GROOM AND BRIDE, FLORIDA, 2014

RACE OF GROOM	RACE OF BRIDE										
	TOTAL	WHITE	BLACK	AMERICAN INDIAN	CHINESE	JAPANESE	HAWAIIAN	FILIPINO	OTHER ASIAN/PAC ISL	OTHER ENTRIES	UNK
TOTAL	145,250	113,364	19,836	318	47	12	9	141	3,502	7,671	350
WHITE	112,393	106,240	1,653	225	26	9	7	99	1,790	2,254	90
BLACK	22,316	3,671	17,721	34	1	0	1	7	157	706	18
AMERICAN INDIAN	349	270	14	44	0	0	0	1	7	12	1
CHINESE	22	6	0	0	13	0	0	0	3	0	0
JAPANESE	6	5	0	0	0	1	0	0	0	0	0
HAWAIIAN	13	11	0	0	0	0	1	0	0	1	0
FILIPINO	67	40	0	0	1	0	0	25	0	1	0
OTH ASIAN/PAC ISL	2,338	777	54	4	1	0	0	2	1,450	47	3
OTHER ENTRIES	7,414	2,266	384	10	5	2	0	7	91	4,649	0
UNK	332	78	10	1	0	0	0	0	4	1	238

TABLE M-3: DISSOLUTIONS* OF MARRIAGE BY DURATION OF MARRIAGE IN YEARS AND NUMBER OF MINOR CHILDREN AFFECTED, FLORIDA, 2014

DURATION IN YEARS	NUMBER OF MINOR CHILDREN AFFECTED								
	TOTAL	NONE	ONE	TWO	THREE	FOUR	FIVE	SIX+	UNK
TOTAL	79,432	45,907	14,972	10,383	2,819	572	116	33	4,630
<1	1,999	1,693	97	44	10	3	0	1	151
1	3,865	3,135	314	96	16	2	0	0	302
2	4,708	3,567	624	156	24	10	1	0	326
3	5,490	3,952	866	272	42	8	1	1	348
4	5,371	3,597	1,018	334	52	9	2	1	358
5-9	21,260	11,772	4,737	2,868	593	122	22	5	1,141
10-14	12,976	5,439	2,833	2,973	940	183	34	8	566
15-19	8,491	3,000	1,985	2,218	756	154	37	11	330
20-24	5,805	2,894	1,422	880	251	49	13	2	294
25-29	3,459	2,369	555	203	40	8	3	3	278
30-34	1,934	1,561	131	45	13	2	0	0	182
35-39	887	740	25	15	9	1	0	0	97
40+	826	728	10	12	2	1	0	0	73
UNK	2,361	1,460	355	267	71	20	3	1	184

*Includes divorces and annulments.

TABLE M-4: DISSOLUTIONS* OF MARRIAGE BY MONTH, BY COUNTY, FLORIDA, 2014

	TOTAL	JAN	FEB	MAR	APR	MAY	JUN	JUL	AUG	SEP	OCT	NOV	DEC
FLORIDA	79,432	5,849	6,298	6,734	7,142	7,143	6,728	6,708	6,598	6,583	7,075	5,784	6,790
ALACHUA	830	39	63	90	68	87	91	58	75	58	50	85	66
BAKER	128	9	7	14	10	6	14	8	7	12	18	10	13
BAY	821	62	70	70	75	83	57	63	77	82	67	44	71
BRADFORD	126	5	26	5	13	8	12	12	11	6	11	9	8
BREVARD	2,167	178	168	204	217	174	201	169	200	173	153	159	171
BROWARD	8,147	422	661	811	693	886	730	668	636	765	644	642	589
CALHOUN	60	6	7	0	6	7	3	3	5	6	4	6	7
CHARLOTTE	582	48	44	50	50	58	49	61	35	51	54	22	60
CITRUS	466	41	33	37	56	46	34	41	30	30	33	46	39
CLAY	811	66	58	78	67	84	75	67	65	61	85	47	58
COLLIER	1,241	104	85	121	103	102	109	96	99	107	110	97	108
COLUMBIA	311	11	16	18	52	31	26	36	32	20	23	23	23
MIAMI-DADE	13,431	987	1,006	1,217	1,185	1,291	1,110	1,106	1,139	1,107	1,192	1,018	1,073
DESOTO	107	8	6	8	8	12	8	8	7	13	11	8	10
DIXIE	76	9	4	9	5	11	2	9	2	7	14	4	0
DUVAL	3,637	287	299	284	270	281	298	409	330	248	336	222	373
ESCAMBIA	1,080	63	102	120	93	106	92	101	103	107	7	69	117
FLAGLER	352	27	25	13	47	32	42	27	37	30	43	29	0
FRANKLIN	71	12	7	6	3	7	7	8	2	2	7	4	6
GADSDEN	145	14	6	11	17	6	17	8	11	19	7	14	15
GILCHRIST	85	7	5	8	3	0	17	7	6	2	11	6	13
GLADES	27	1	2	1	5	6	3	2	0	2	2	0	3
GULF	48	3	1	8	4	2	5	8	3	1	10	2	1
HAMILTON	66	4	4	4	7	6	8	3	6	9	2	9	4
HARDEE	86	10	6	7	6	6	7	8	4	8	7	9	8
HENDRY	139	5	15	13	26	11	11	10	13	5	8	12	10
HERNANDO	599	53	43	44	50	47	61	55	55	43	54	40	54
HIGHLANDS	254	20	20	20	17	22	16	15	34	12	28	29	21
HILLSBOROUGH	5,190	415	457	407	403	415	458	481	444	437	411	405	457
HOLMES	71	5	9	2	4	5	5	7	6	6	6	7	9
INDIAN RIVER	537	48	42	54	39	55	47	50	48	34	42	35	43
JACKSON	216	19	32	22	26	20	14	19	15	16	20	0	13
JEFFERSON	48	2	1	10	3	4	3	1	9	5	2	6	2
LAFAYETTE	40	5	3	6	1	3	4	2	6	3	4	2	1
LAKE	917	66	82	62	88	80	95	74	76	79	60	91	64
LEE	3,411	231	270	285	345	264	300	306	276	216	354	250	314
LEON	1,003	77	63	82	175	81	72	66	91	70	96	63	67
LEVY	123	3	11	9	22	3	9	23	6	18	10	0	9
LIBERTY	31	2	4	0	7	3	0	4	5	0	0	1	5
MADISON	55	0	1	9	7	4	0	8	7	9	6	2	2
MANATEE	1,116	94	75	78	89	111	95	82	99	113	107	81	92
MARION	1,290	107	86	100	126	150	94	104	75	99	117	68	164
MARTIN	513	42	48	44	50	51	50	29	48	35	42	34	40
MONROE	613	45	47	38	62	57	81	55	41	46	56	33	52
NASSAU	348	26	30	34	24	27	22	28	34	34	35	18	36
OKALOOSA	1,019	55	71	83	88	88	77	86	96	87	97	91	100
OKEECHOBEE	142	23	8	12	19	9	9	13	3	11	20	3	12
ORANGE	4,564	354	473	338	416	352	349	388	302	416	512	306	358
OSCEOLA	1,400	97	94	153	139	85	109	114	126	84	159	64	176
PALM BEACH	5,085	406	426	380	443	506	411	423	388	440	467	382	413
PASCO	1,615	137	96	137	132	112	159	121	197	119	165	104	136
PINELLAS	3,202	199	235	274	280	262	255	255	256	324	304	232	326
POLK	2,363	194	193	166	214	192	178	223	187	211	194	196	215
PUTNAM	271	26	20	18	21	22	38	24	20	14	20	19	29
SAINT JOHNS	810	82	56	75	92	81	68	39	71	64	63	64	55
SAINT LUCIE	912	77	64	68	83	103	74	70	89	54	97	60	73
SANTA ROSA	748	45	59	67	92	68	53	41	35	85	71	59	73
SARASOTA	1,245	80	79	111	112	118	108	103	100	101	131	76	126
SEMINOLE	1,573	132	127	115	111	138	130	120	158	109	151	138	144
SUMTER	184	12	17	15	20	14	15	10	23	15	11	13	19
SUWANNEE	160	13	17	13	9	18	13	11	13	13	15	8	17
TAYLOR	91	8	2	4	7	12	3	12	8	11	12	3	9
UNION	68	4	9	6	8	5	1	12	0	9	7	2	5
VOLUSIA	2,123	186	161	149	185	172	189	197	180	177	176	174	177
WAKULLA	124	7	14	18	16	9	8	13	6	7	8	6	12
WALTON	234	23	15	19	19	21	20	18	23	20	23	16	17
WASHINGTON	84	1	12	0	9	5	7	10	7	6	13	7	7

*Includes divorces and annulments.

TABLE M-5: DISSOLUTIONS* OF MARRIAGE BY NUMBER OF MINOR CHILDREN AFFECTED, BY COUNTY, FLORIDA, 2014

	TOTAL	NONE	ONE	TWO	THREE	FOUR	FIVE	SIX	SEVEN	EIGHT+	UNK
FLORIDA	79,432	45,907	14,972	10,383	2,819	572	116	24	5	4	4,630
ALACHUA	830	460	195	130	38	5	2	0	0	0	0
BAKER	128	63	21	28	11	4	0	0	0	1	0
BAY	821	461	201	104	41	11	3	0	0	0	0
BRADFORD	126	79	20	16	10	1	0	0	0	0	0
BREVARD	2,167	1,233	453	360	95	24	2	0	0	0	0
BROWARD	8,147	5,231	1,371	887	233	33	12	2	0	0	378
CALHOUN	60	29	13	16	1	1	0	0	0	0	0
CHARLOTTE	582	554	13	12	2	1	0	0	0	0	0
CITRUS	466	295	87	57	19	7	0	1	0	0	0
CLAY	811	384	165	161	40	9	1	0	0	0	51
COLLIER	1,241	773	246	158	55	6	2	1	0	0	0
COLUMBIA	311	177	72	35	19	6	1	0	1	0	0
MIAMI-DADE	13,431	9,667	2,194	1,251	262	47	6	2	2	0	0
DESOTO	107	63	20	16	6	2	0	0	0	0	0
DIXIE	76	41	15	17	2	1	0	0	0	0	0
DUVAL	3,637	2,094	771	554	147	39	9	1	0	1	21
ESCAMBIA	1,080	671	225	143	32	5	2	0	1	1	0
FLAGLER	352	156	70	38	22	4	0	0	0	0	62
FRANKLIN	71	6	12	10	1	2	0	0	0	0	40
GADSDEN	145	50	27	19	10	0	2	0	0	0	37
GILCHRIST	85	52	16	13	2	2	0	0	0	0	0
GLADES	27	15	1	8	2	1	0	0	0	0	0
GULF	48	28	13	5	2	0	0	0	0	0	0
HAMILTON	66	38	15	9	4	0	0	0	0	0	0
HARDEE	86	43	23	13	4	3	0	0	0	0	0
HENDRY	139	70	33	20	13	1	2	0	0	0	0
HERNANDO	599	357	120	88	27	7	0	0	0	0	0
HIGHLANDS	254	161	45	33	12	2	1	0	0	0	0
HILLSBOROUGH	5,190	3,111	1,038	764	209	40	10	2	0	0	16
HOLMES	71	43	10	18	0	0	0	0	0	0	0
INDIAN RIVER	537	288	121	101	19	4	3	1	0	0	0
JACKSON	216	135	44	25	10	1	1	0	0	0	0
JEFFERSON	48	33	6	8	1	0	0	0	0	0	0
LAFAYETTE	40	20	10	7	2	1	0	0	0	0	0
LAKE	917	365	165	150	44	9	0	1	0	0	183
LEE	3,411	2,242	602	433	103	28	3	0	0	0	0
LEON	1,003	578	212	140	36	14	1	0	0	0	22
LEVY	123	61	24	28	9	1	0	0	0	0	0
LIBERTY	31	17	10	4	0	0	0	0	0	0	0
MADISON	55	27	14	8	4	2	0	0	0	0	0
MANATEE	1,116	643	212	178	63	12	2	0	0	0	6
MARION	1,290	806	238	151	58	17	5	1	0	0	14
MARTIN	513	337	84	63	24	3	1	0	0	1	0
MONROE	613	467	76	44	8	5	1	0	0	0	12
NASSAU	348	211	74	48	14	1	0	0	0	0	0
OKALOOSA	1,019	586	225	158	40	9	1	0	0	0	0
OKEECHOBEE	142	85	37	12	3	5	0	0	0	0	0
ORANGE	4,564	2,810	906	623	176	37	6	2	0	0	4
OSCEOLA	1,400	860	265	199	65	6	3	1	0	0	1
PALM BEACH	5,085	1,180	1,004	678	170	25	3	2	0	0	2,023
PASCO	1,615	876	370	281	68	14	3	1	0	0	2
PINELLAS	3,202	2,084	586	387	98	14	3	3	0	0	27
POLK	2,363	1,379	502	336	108	25	11	0	0	0	2
PUTNAM	271	164	44	51	9	2	1	0	0	0	0
SAINT JOHNS	810	444	159	156	47	4	0	0	0	0	0
SAINT LUCIE	912	510	201	142	49	8	1	0	0	0	1
SANTA ROSA	748	375	176	145	42	9	0	1	0	0	0
SARASOTA	1,245	864	211	130	34	6	0	0	0	0	0
SEMINOLE	1,573	480	322	253	67	19	2	2	0	0	428
SUMTER	184	140	22	17	5	0	0	0	0	0	0
SUWANNEE	160	83	37	25	9	5	0	0	1	0	0
TAYLOR	91	46	17	16	6	2	0	0	0	0	4
UNION	68	34	14	12	5	2	1	0	0	0	0
VOLUSIA	2,123	16	389	313	84	16	9	0	0	0	1,296
WAKULLA	124	68	26	26	4	0	0	0	0	0	0
WALTON	234	141	43	37	11	2	0	0	0	0	0
WASHINGTON	84	47	19	15	3	0	0	0	0	0	0

*Includes divorces and annulments.