

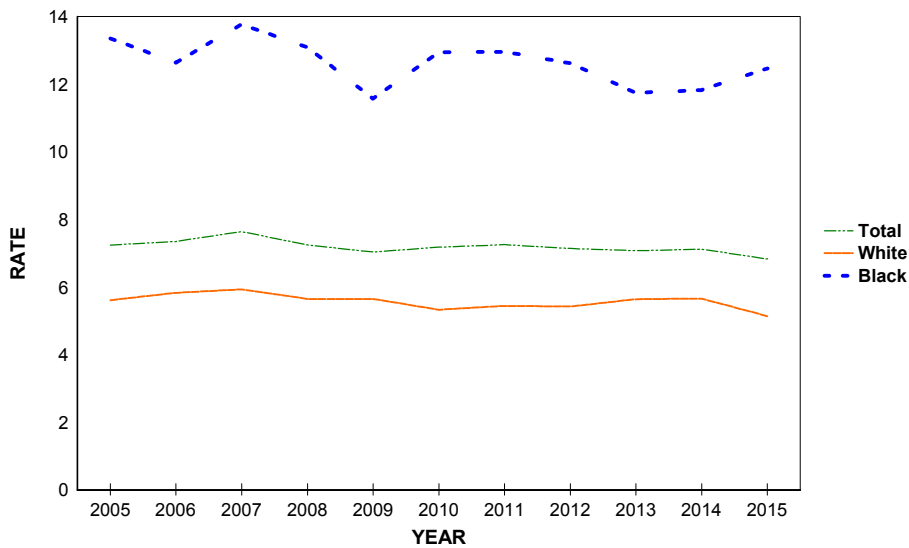
# **Fetal and Infant Deaths**

**CHART F-1: RESIDENT FETAL DEATHS AND RATES PER 1,000 LIVE BIRTHS AND FETAL DEATHS, BY RACE\*, FLORIDA AND UNITED STATES, CENSUS YEARS 1970-2000 AND 2005-2015**

YEAR	NUMBER OF FETAL DEATHS - FL				RATES PER 1,000 - FL			RATES - U.S.		
	TOTAL	WHITE	BLACK	OTHER	TOTAL	WHITE	BLACK	TOTAL	WHITE	BLACK
1970	1,708	1,034	608	7	14.6	11.8	21.6	14.0	12.3	23.2
1980	1,356	848	476	15	10.2	8.6	14.2	9.1	8.1	14.7
1990	1,811	1,071	695	25	9.0	7.1	14.8	7.5	6.4	13.3
2000	1,675	954	667	37	8.1	6.3	13.9	6.6	5.6	12.4
2005	1,650	938	649	39	7.2	5.6	13.4	6.2	5.3	11.4
2006	1,756	1,020	650	83	7.3	5.8	12.6	6.1	NA	NA
2007	1,840	1,042	720	72	7.6	5.9	13.8	NA	NA	NA
2008	1,688	951	681	44	7.2	5.6	13.1	NA	NA	NA
2009	1,569	904	592	63	7.0	5.6	11.6	NA	NA	NA
2010	1,551	822	645	79	7.2	5.3	12.9	NA	NA	NA
2011	1,558	832	641	76	7.3	5.4	13.0	NA	NA	NA
2012	1,530	822	626	77	7.1	5.4	12.6	NA	NA	NA
2013	1,533	869	579	81	7.1	5.6	11.7	NA	NA	NA
2014	1,576	893	587	90	7.1	5.7	11.8	NA	NA	NA
2015	1,541	831	620	83	6.8	5.1	12.5	NA	NA	NA

\*Fetal deaths and live births based on the race of the mother.

**GRAPH F-1: RESIDENT FETAL DEATH RATES PER 1,000 LIVE BIRTHS AND FETAL DEATHS, BY RACE OF MOTHER, FLORIDA, 2005-2015**

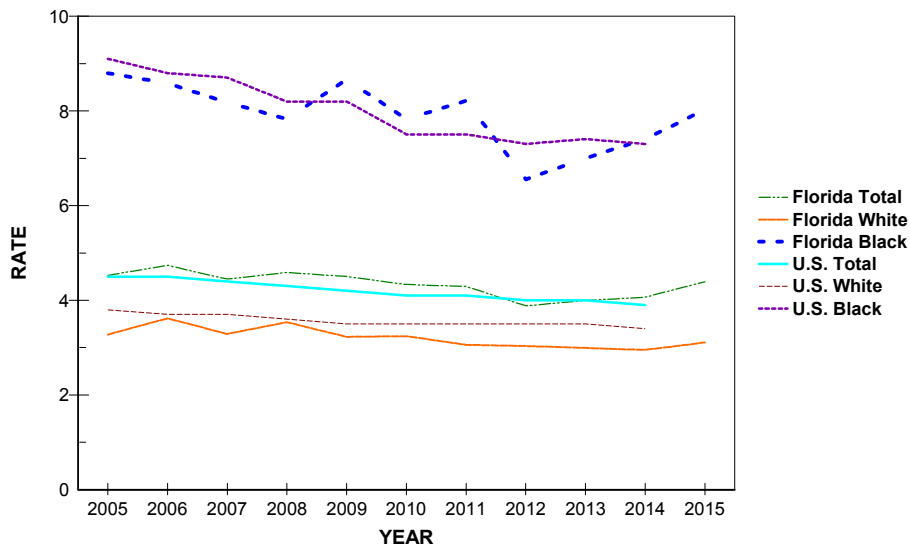


**CHART F-2: RESIDENT NEONATAL DEATHS AND RATES PER 1,000 LIVE BIRTHS,  
BY RACE, FLORIDA AND UNITED STATES,  
CENSUS YEARS 1970-2000 AND 2005-2015**

YEAR	NUMBER OF NEONATAL DEATHS - FL <sup>1</sup>				RATES - FL <sup>1</sup>			RATES - U.S.		
	TOTAL	WHITE	BLACK	OTHER	TOTAL	WHITE	BLACK	TOTAL	WHITE	BLACK
1970	1,847	1,198	636	11	16.0	13.8	23.1	15.1	13.8	22.8
1980	1,282	791	487	3	9.7	8.1	14.7	8.5	7.4	14.6
1990	1,227	742	476	8	6.2	5.0	10.3	5.9	4.8	11.6
2000	925	526	384	13	4.5	3.5	8.1	4.6	3.8	9.4
2005	1,024	544	422	57	4.5	3.3	8.8	4.5	3.8	9.1
2006	1,122	630	436	54	4.7	3.6	8.6	4.5	3.7	8.8
2007	1,062	573	422	65	4.4	3.3	8.2	4.4	3.7	8.7
2008	1,061	592	402	65	4.6	3.5	7.8	4.3	3.6	8.2
2009	996	513	438	42	4.5	3.2	8.7	4.2	3.5	8.2
2010	929	497	385	46	4.3	3.2	7.8	4.1	3.5	7.5
2011	915	465	401	46	4.3	3.1	8.2	4.1	3.5	7.5
2012	826	457	321	47	3.9	3.0	6.6	4.0	3.5	7.3
2013	859	458	341	57	4.0	3.0	7.0	4.0	3.5	7.4
2014	893	463	363	62	4.1	2.9	7.4	3.9	3.4	7.3
2015	984	499	394	84	4.4	3.1	8.0	NA	NA	NA

1. Neonatal deaths based on race of decedent, live births based on race of mother.

**GRAPH F-2: RESIDENT NEONATAL DEATH RATES PER 1,000 LIVE BIRTHS, BY RACE,  
FLORIDA AND UNITED STATES, 2005-2015**



**CHART F-3: RESIDENT INFANT DEATHS AND RATES PER 1,000 LIVE BIRTHS, BY RACE, FLORIDA AND UNITED STATES, CENSUS YEARS 1970-2000 AND 2005-2015**

YEAR	NUMBER OF INFANT DEATHS - FL <sup>1</sup>				RATES - FL <sup>1</sup>			RATE - U.S.		
	TOTAL	WHITE	BLACK	OTHER	TOTAL	WHITE	BLACK	TOTAL	WHITE	BLACK
1970	2,469	1,538	918	11	21.4	17.7	33.3	20.0	17.8	32.7
1980	1,918	1,137	774	6	14.6	11.7	23.4	12.6	10.9	22.1
1990	1,912	1,123	775	12	9.6	7.5	16.7	9.2	7.6	18.0
2000	1,423	810	594	17	7.0	5.4	12.6	6.9	5.7	14.1
2005	1,626	882	652	91	7.2	5.3	13.6	6.9	5.7	13.7
2006	1,713	974	653	84	7.2	5.6	12.9	6.7	5.6	13.3
2007	1,689	906	689	92	7.1	5.2	13.4	6.8	5.6	13.2
2008	1,667	914	661	90	7.2	5.5	12.9	6.6	5.5	12.7
2009	1,525	780	667	75	6.9	4.9	13.2	6.4	5.3	12.6
2010	1,400	750	580	69	6.5	4.9	11.8	6.2	5.2	11.6
2011	1,372	698	584	86	6.4	4.6	12.0	6.1	5.1	11.5
2012	1,285	687	523	73	6.0	4.6	10.7	6.0	5.1	11.2
2013	1,318	707	517	90	6.1	4.6	10.6	6.0	5.1	11.2
2014	1,327	688	538	95	6.0	4.4	11.0	5.8	4.9	11.0
2015	1,400	711	558	124	6.2	4.4	11.4	NA	NA	NA

1. Infant deaths based on race of decedent, live births based on race of mother.

**GRAPH F-3: RESIDENT INFANT DEATH RATES PER 1,000 LIVE BIRTHS, BY RACE, FLORIDA AND UNITED STATES, 2005-2015**

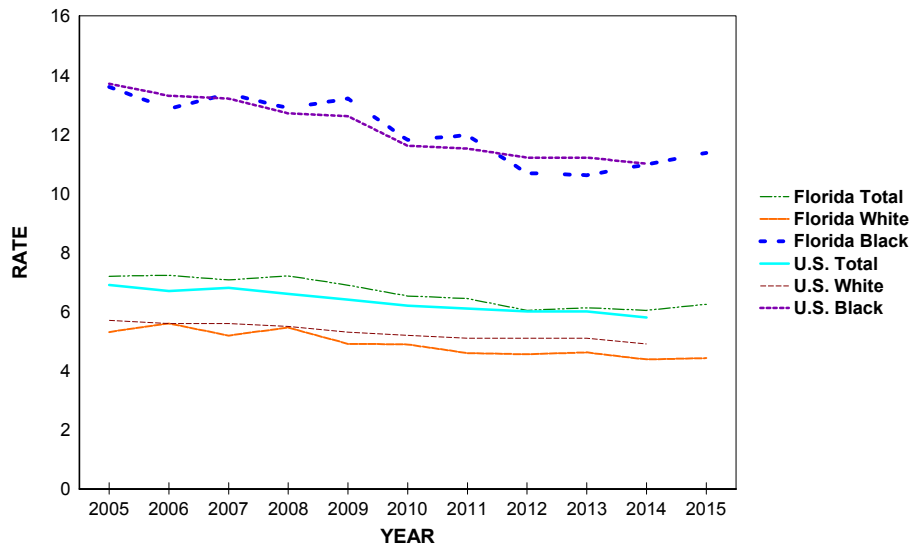


TABLE F-1: RESIDENT AND RECORDED FETAL DEATHS (OF 20 OR MORE WEEKS GESTATION) AND RATES PER 1,000 LIVE BIRTHS AND FETAL DEATHS, BY RACE OF MOTHER, BY COUNTY, FLORIDA, 2015

	RESIDENT FETAL DEATHS					RATES		
	NUMBERS					RATES		
	TOTAL	WHITE	BLACK	OTHER	UNK	TOTAL	WHITE	BLACK
FLORIDA	1541	831	620	83	7	6.8	5.1	12.5
ALACHUA	18	6	11	1	0	6.2	3.4	13.0
BAKER	0	0	0	0	0	0.0	0.0	0.0
BAY	8	6	1	1	0	3.3	3.2	3.2
BRADFORD	1	1	0	0	0	3.4	4.3	0.0
BREVARD	32	25	6	1	0	6.1	6.0	7.9
BROWARD	189	62	115	11	1	8.4	5.0	13.8
CALHOUN	2	2	0	0	0	13.2	16.3	0.0
CHARLOTTE	3	3	0	0	0	2.9	3.4	0.0
CITRUS	4	4	0	0	0	3.9	4.2	0.0
CLAY	11	9	1	1	0	4.9	5.0	3.4
COLLIER	16	14	2	0	0	4.9	5.1	5.0
COLUMBIA	5	4	1	0	0	6.0	6.4	5.6
MIAMI-DADE	216	97	106	9	4	6.6	3.9	15.3
DESOTO	0	0	0	0	0	0.0	0.0	0.0
DIXIE	2	2	0	0	0	13.9	15.9	0.0
DUVAL	109	44	62	3	0	8.3	6.0	13.3
ESCAMBIA	26	10	14	2	0	6.6	4.1	11.6
FLAGLER	5	5	0	0	0	6.2	7.6	0.0
FRANKLIN	2	2	0	0	0	18.5	20.4	0.0
GADSDEN	2	0	2	0	0	3.6	0.0	6.0
GILCHRIST	0	0	0	0	0	0.0	0.0	0.0
GLADES	1	1	0	0	0	12.5	13.7	0.0
GULF	1	1	0	0	0	8.3	10.3	0.0
HAMILTON	1	0	1	0	0	6.0	0.0	23.3
HARDEE	2	2	0	0	0	5.1	5.5	0.0
HENDRY	4	2	1	1	0	6.3	3.7	14.5
HERNANDO	11	10	1	0	0	6.8	7.1	9.1
HIGHLANDS	10	7	1	2	0	10.8	9.7	6.6
HILLSBOROUGH	108	57	43	8	0	6.1	4.5	11.4
HOLMES	4	3	0	1	0	17.9	14.4	0.0
INDIAN RIVER	8	5	3	0	0	6.4	6.6	12.8
JACKSON	5	1	4	0	0	10.0	2.8	31.7
JEFFERSON	0	0	0	0	0	0.0	0.0	0.0
LAFAYETTE	0	0	0	0	0	0.0	0.0	0.0
LAKE	20	17	2	1	0	6.2	6.7	4.3
LEE	37	28	8	1	0	5.4	5.0	7.8
LEON	13	6	6	1	0	4.2	3.8	4.6
LEVY	4	4	0	0	0	10.1	12.2	0.0
LIBERTY	0	0	0	0	0	0.0	0.0	0.0
MADISON	2	0	2	0	0	9.4	0.0	19.6
MANATEE	20	14	4	2	0	5.7	5.2	8.4
MARION	35	23	11	0	1	9.7	8.3	16.3
MARTIN	6	5	1	0	0	4.7	4.7	9.8
MONROE	4	2	2	0	0	5.3	3.2	22.7
NASSAU	3	3	0	0	0	3.7	4.1	0.0
OKALOOSA	13	9	4	0	0	4.6	3.9	14.0
OKEECHOBEE	4	4	0	0	0	7.6	8.6	0.0
ORANGE	109	50	43	16	0	6.5	4.7	9.6
OSCEOLA	29	23	4	2	0	6.9	6.5	9.0
PALM BEACH	104	48	54	2	0	6.9	4.8	13.2
PASCO	33	26	5	1	1	6.4	5.7	15.2
PINELLAS	62	31	28	3	0	7.0	4.8	18.3
POLK	67	45	20	2	0	8.9	7.9	13.3
PUTNAM	12	4	7	1	0	14.5	6.7	35.4
SAINT JOHNS	9	8	0	1	0	4.2	4.3	0.0
SAINT LUCIE	16	5	9	2	0	5.1	2.5	10.0
SANTA ROSA	10	10	0	0	0	5.1	5.7	0.0
SARASOTA	25	18	6	1	0	8.5	7.2	23.6
SEMINOLE	35	24	9	2	0	7.6	7.0	13.0
SUMTER	4	0	4	0	0	7.9	0.0	42.6
SUWANNEE	3	3	0	0	0	6.9	8.4	0.0
TAYLOR	3	3	0	0	0	11.9	15.2	0.0
UNION	4	2	2	0	0	26.5	15.4	117.6
VOLUSIA	37	22	11	4	0	7.4	5.6	13.7
WAKULLA	1	1	0	0	0	2.9	3.3	0.0
WALTON	7	7	0	0	0	8.6	9.2	0.0
WASHINGTON	3	1	2	0	0	13.0	5.3	64.5

TABLE F-1 (Cont.): RESIDENT AND RECORDED FETAL DEATHS (OF 20 OR MORE WEEKS GESTATION) AND RATES PER 1,000 LIVE BIRTHS AND FETAL DEATHS, BY RACE OF MOTHER, BY COUNTY, FLORIDA, 2015

	RECORDED FETAL DEATHS					RATES		
	NUMBERS							
	TOTAL	WHITE	BLACK	OTHER	UNK	TOTAL	WHITE	BLACK
FLORIDA	1577	851	630	86	10	7.0	5.3	12.6
ALACHUA	51	31	19	1	0	8.4	7.1	14.4
BAKER	0	0	0	0	0	0.0	0.0	0.0
BAY	15	12	1	2	0	5.2	5.3	2.8
BRADFORD	0	0	0	0	0	0.0	0.0	----
BREVARD	25	22	3	0	0	4.8	5.4	4.1
BROWARD	225	84	124	16	1	9.3	6.3	13.6
CALHOUN	0	0	0	0	0	0.0	----	0.0
CHARLOTTE	5	5	0	0	0	4.3	5.0	0.0
CITRUS	3	3	0	0	0	3.5	3.8	0.0
CLAY	11	8	3	0	0	4.8	4.7	6.3
COLLIER	15	13	2	0	0	4.3	4.4	5.0
COLUMBIA	5	3	2	0	0	6.5	5.4	10.4
MIAMI-DADE	195	83	98	9	5	6.5	3.6	16.9
DESOTO	0	0	0	0	0	0.0	0.0	0.0
DIXIE	0	0	0	0	0	----	----	----
DUVAL	117	51	61	5	0	7.9	5.7	13.4
ESCAMBIA	45	24	18	2	1	7.9	6.0	13.8
FLAGLER	0	0	0	0	0	0.0	0.0	0.0
FRANKLIN	0	0	0	0	0	0.0	0.0	----
GADSDEN	0	0	0	0	0	0.0	0.0	0.0
GILCHRIST	0	0	0	0	0	0.0	0.0	----
GLADES	0	0	0	0	0	----	----	----
GULF	0	0	0	0	0	----	----	----
HAMILTON	0	0	0	0	0	----	----	----
HARDEE	0	0	0	0	0	0.0	0.0	----
HENDRY	0	0	0	0	0	0.0	0.0	0.0
HERNANDO	11	10	1	0	0	6.2	6.4	9.3
HIGHLANDS	9	6	1	2	0	7.6	6.3	5.9
HILLSBOROUGH	131	76	49	6	0	6.4	5.0	11.7
HOLMES	0	0	0	0	0	0.0	----	----
INDIAN RIVER	8	5	3	0	0	7.6	8.4	15.0
JACKSON	3	2	1	0	0	6.6	6.2	9.6
JEFFERSON	0	0	0	0	0	0.0	0.0	----
LAFAYETTE	0	0	0	0	0	----	----	----
LAKE	19	15	4	0	0	7.1	7.3	8.7
LEE	41	31	8	2	0	5.8	5.4	7.6
LEON	27	11	15	1	0	5.7	4.1	7.9
LEVY	0	0	0	0	0	0.0	0.0	0.0
LIBERTY	0	0	0	0	0	----	----	----
MADISON	0	0	0	0	0	0.0	0.0	----
MANATEE	11	8	2	1	0	4.2	4.1	6.0
MARION	21	13	6	0	2	8.1	6.6	12.2
MARTIN	5	5	0	0	0	5.1	6.1	0.0
MONROE	4	2	2	0	0	7.6	4.7	25.3
NASSAU	3	2	1	0	0	4.7	3.7	14.3
OKALOOSA	13	9	4	0	0	5.2	4.6	15.3
OKEECHOBEE	0	0	0	0	0	0.0	0.0	0.0
ORANGE	160	86	58	16	0	7.3	5.8	11.6
OSCEOLA	32	22	5	5	0	7.4	6.2	11.0
PALM BEACH	106	47	56	3	0	6.1	4.0	12.1
PASCO	17	12	4	1	0	7.8	6.3	26.0
PINELLAS	71	37	28	5	1	6.9	4.8	17.7
POLK	47	31	14	2	0	8.4	7.4	12.5
PUTNAM	6	1	5	0	0	22.3	5.6	59.5
SAINT JOHNS	7	6	0	1	0	4.5	4.9	0.0
SAINT LUCIE	19	8	10	1	0	5.8	3.7	11.2
SANTA ROSA	3	3	0	0	0	7.9	8.7	0.0
SARASOTA	31	24	6	1	0	8.6	7.9	16.0
SEMINOLE	20	12	7	1	0	6.5	5.4	11.1
SUMTER	0	0	0	0	0	0.0	0.0	----
SUWANNEE	0	0	0	0	0	0.0	0.0	0.0
TAYLOR	1	1	0	0	0	333.3	333.3	----
UNION	0	0	0	0	0	----	----	----
VOLUSIA	35	23	9	3	0	8.2	6.9	12.6
WAKULLA	0	0	0	0	0	0.0	0.0	----
WALTON	4	4	0	0	0	3.3	3.6	0.0
WASHINGTON	0	0	0	0	0	----	----	----

---- Indicates that no fetal deaths nor live births occurred for the race group in the county, therefore a rate could not be calculated.

TABLE F-2: RESIDENT FETAL DEATHS AND RATE PER 1,000 LIVE BIRTHS AND FETAL DEATHS BY HISPANIC OR HAITIAN ORIGIN OF MOTHER, BY COUNTY, FLORIDA, 2015

	NUMBERS									RATE
	HISPANIC ORIGIN									TOTAL HISPANIC
	TOTAL	TOTAL HISPANIC	MEXICAN	PUERTO RICAN	CUBAN	OTHER/UNK HISPANIC	HAITIAN	NON-HISPANIC/ HAITIAN	UNK	
FLORIDA	1,541	338	62	87	59	130	106	1,052	45	5.3
ALACHUA	18	0	0	0	0	0	1	17	0	0.0
BAKER	0	0	0	0	0	0	0	0	0	0.0
BAY	8	0	0	0	0	0	0	8	0	0.0
BRADFORD	1	0	0	0	0	0	0	1	0	0.0
BREVARD	32	4	1	2	0	1	0	28	0	6.1
BROWARD	189	44	5	3	3	33	29	101	15	6.4
CALHOUN	2	0	0	0	0	0	0	2	0	0.0
CHARLOTTE	3	0	0	0	0	0	0	3	0	0.0
CITRUS	4	1	0	1	0	0	0	3	0	15.9
CLAY	11	2	1	0	0	1	0	9	0	9.0
COLLIER	16	5	4	0	0	1	1	9	1	3.2
COLUMBIA	5	1	0	1	0	0	0	4	0	25.6
MIAMI-DADE	216	86	2	11	41	32	29	89	12	4.3
DESOTO	0	0	0	0	0	0	0	0	0	0.0
DIXIE	2	0	0	0	0	0	0	2	0	0.0
DUVAL	109	7	2	2	1	2	1	101	0	5.0
ESCAMBIA	26	3	1	0	0	2	0	23	0	13.0
FLAGLER	5	1	0	1	0	0	0	4	0	11.1
FRANKLIN	2	0	0	0	0	0	0	2	0	0.0
GADSDEN	2	0	0	0	0	0	0	2	0	0.0
GILCHRIST	0	0	0	0	0	0	0	0	0	0.0
GLADES	1	0	0	0	0	0	0	1	0	0.0
GULF	1	0	0	0	0	0	0	1	0	0.0
HAMILTON	1	0	0	0	0	0	0	1	0	0.0
HARDEE	2	2	2	0	0	0	0	0	0	8.4
HENDRY	4	2	1	0	0	1	0	2	0	5.0
HERNANDO	11	1	1	0	0	0	0	10	0	4.4
HIGHLANDS	10	3	1	1	0	1	0	7	0	11.0
HILLSBOROUGH	108	31	12	8	3	8	3	74	0	5.8
HOLMES	4	0	0	0	0	0	0	4	0	0.0
INDIAN RIVER	8	0	0	0	0	0	0	8	0	0.0
JACKSON	5	1	0	0	0	1	0	4	0	52.6
JEFFERSON	0	0	0	0	0	0	0	0	0	0.0
LAFAYETTE	0	0	0	0	0	0	0	0	0	0.0
LAKE	20	5	3	2	0	0	0	15	0	8.1
LEE	37	15	4	3	2	6	3	19	0	7.0
LEON	13	1	0	0	0	1	0	12	0	6.0
LEVY	4	0	0	0	0	0	0	4	0	0.0
LIBERTY	0	0	0	0	0	0	0	0	0	0.0
MADISON	2	0	0	0	0	0	0	1	1	0.0
MANATEE	20	4	4	0	0	0	0	16	0	4.2
MARION	35	3	0	1	0	2	0	31	1	5.5
MARTIN	6	3	0	0	0	3	0	3	0	7.7
MONROE	4	1	0	0	1	0	1	2	0	4.2
NASSAU	3	0	0	0	0	0	0	3	0	0.0
OKALOOSA	13	0	0	0	0	0	0	12	1	0.0
OKEECHOBEE	4	0	0	0	0	0	0	4	0	0.0
ORANGE	109	29	1	13	3	12	5	72	3	5.4
OSCEOLA	29	15	0	9	0	6	3	11	0	6.5
PALM BEACH	104	19	5	3	1	10	19	60	6	4.1
PASCO	33	5	0	4	0	1	1	26	1	5.9
PINELLAS	62	4	0	3	1	0	1	56	1	3.4
POLK	67	15	5	7	0	3	2	50	0	7.6
PUTNAM	12	0	0	0	0	0	0	12	0	0.0
SAINT JOHNS	9	0	0	0	0	0	0	9	0	0.0
SAINT LUCIE	16	2	1	1	0	0	4	10	0	2.9
SANTA ROSA	10	0	0	0	0	0	0	9	1	0.0
SARASOTA	25	7	2	2	1	2	0	18	0	21.3
SEMINOLE	35	9	2	4	2	1	1	24	1	8.9
SUMTER	4	0	0	0	0	0	0	4	0	0.0
SUWANNEE	3	0	0	0	0	0	0	3	0	0.0
TAYLOR	3	0	0	0	0	0	0	2	1	0.0
UNION	4	0	0	0	0	0	1	3	0	0.0
VOLUSIA	37	7	2	5	0	0	1	29	0	9.3
WAKULLA	1	0	0	0	0	0	0	1	0	0.0
WALTON	7	0	0	0	0	0	0	7	0	0.0
WASHINGTON	3	0	0	0	0	0	0	3	0	0.0

TABLE F-3: RESIDENT FETAL DEATHS BY AGE OF MOTHER, BY COUNTY, FLORIDA, 2015

	TOTAL	AGE OF MOTHER													
		<13	13	14	15	16	17	18	19	20-24	25-29	30-34	35-44	45+	UNK
FLORIDA	1,541	0	1	4	1	7	8	32	51	342	391	370	282	11	41
ALACHUA	18	0	0	0	0	0	0	1	0	6	5	5	1	0	0
BAKER	0	0	0	0	0	0	0	0	0	0	0	0	0	0	0
BAY	8	0	0	0	0	0	0	1	0	2	3	1	0	1	0
BRADFORD	1	0	0	0	0	0	0	0	0	1	0	0	0	0	0
BREVARD	32	0	0	0	0	0	0	0	2	6	13	9	2	0	0
BROWARD	189	0	1	0	0	1	0	2	1	34	34	43	44	1	28
CALHOUN	2	0	0	0	0	0	0	0	0	1	0	0	1	0	0
CHARLOTTE	3	0	0	0	0	0	0	0	0	1	1	0	1	0	0
CITRUS	4	0	0	0	0	0	0	0	0	2	1	1	0	0	0
CLAY	11	0	0	0	0	1	1	0	0	3	4	1	1	0	0
COLLIER	16	0	0	0	0	0	0	0	0	3	6	3	3	1	0
COLUMBIA	5	0	0	0	0	0	0	0	0	2	3	0	0	0	0
MIAMI-DADE	216	0	0	0	0	2	1	6	12	42	46	57	42	2	6
DESOTO	0	0	0	0	0	0	0	0	0	0	0	0	0	0	0
DIXIE	2	0	0	0	0	0	0	0	0	1	0	1	0	0	0
DUVAL	109	0	0	0	0	1	1	1	6	26	35	27	12	0	0
ESCAMBIA	26	0	0	2	0	0	0	1	1	11	7	2	2	0	0
FLAGLER	5	0	0	0	0	0	0	0	0	1	2	0	2	0	0
FRANKLIN	2	0	0	0	0	0	0	0	0	2	0	0	0	0	0
GADSDEN	2	0	0	0	0	0	0	0	0	0	1	1	0	0	0
GILCHRIST	0	0	0	0	0	0	0	0	0	0	0	0	0	0	0
GLADES	1	0	0	0	0	0	0	0	0	0	1	0	0	0	0
GULF	1	0	0	0	0	0	0	0	0	0	0	1	0	0	0
HAMILTON	1	0	0	0	0	0	0	0	0	1	0	0	0	0	0
HARDEE	2	0	0	0	0	0	0	0	0	1	0	0	1	0	0
HENDRY	4	0	0	0	0	0	0	0	0	2	1	0	1	0	0
HERNANDO	11	0	0	0	0	0	0	0	0	3	2	3	3	0	0
HIGHLANDS	10	0	0	0	0	0	0	0	0	2	4	3	1	0	0
HILLSBOROUGH	108	0	0	1	0	1	0	1	3	30	28	22	21	1	0
HOLMES	4	0	0	0	0	0	0	1	0	2	0	0	1	0	0
INDIAN RIVER	8	0	0	0	0	0	0	0	1	0	4	2	1	0	0
JACKSON	5	0	0	0	0	0	0	0	2	1	1	1	0	0	0
JEFFERSON	0	0	0	0	0	0	0	0	0	0	0	0	0	0	0
LAFAYETTE	0	0	0	0	0	0	0	0	0	0	0	0	0	0	0
LAKE	20	0	0	0	0	0	2	0	0	4	5	6	3	0	0
LEE	37	0	0	1	0	0	1	2	2	6	7	9	9	0	0
LEON	13	0	0	0	0	0	0	0	0	3	2	6	2	0	0
LEVY	4	0	0	0	0	0	0	0	1	0	1	2	0	0	0
LIBERTY	0	0	0	0	0	0	0	0	0	0	0	0	0	0	0
MADISON	2	0	0	0	0	0	0	0	0	1	0	1	0	0	0
MANATEE	20	0	0	0	0	0	0	3	1	3	7	2	4	0	0
MARION	35	0	0	0	0	0	0	1	0	7	10	9	8	0	0
MARTIN	6	0	0	0	0	0	0	0	0	3	1	2	0	0	0
MONROE	4	0	0	0	0	0	0	0	1	1	1	1	0	0	0
NASSAU	3	0	0	0	0	0	0	0	0	1	0	1	1	0	0
OKALOOSA	13	0	0	0	0	0	0	0	0	4	4	3	2	0	0
OKEECHOBEE	4	0	0	0	0	0	0	0	0	2	0	0	2	0	0
ORANGE	109	0	0	0	0	0	0	2	1	20	33	23	29	0	1
OSCEOLA	29	0	0	0	0	0	1	0	2	7	5	5	9	0	0
PALM BEACH	104	0	0	0	0	0	0	3	3	16	20	32	26	2	2
PASCO	33	0	0	0	0	0	0	0	1	7	12	9	3	1	0
PINELLAS	62	0	0	0	1	0	0	1	1	12	18	16	11	1	1
POLK	67	0	0	0	0	1	1	1	4	14	13	18	14	0	1
PUTNAM	12	0	0	0	0	0	0	0	1	4	3	3	1	0	0
SAINT JOHNS	9	0	0	0	0	0	0	0	0	2	1	4	2	0	0
SAINT LUCIE	16	0	0	0	0	0	0	2	0	7	4	2	1	0	0
SANTA ROSA	10	0	0	0	0	0	0	0	0	2	4	3	1	0	0
SARASOTA	25	0	0	0	0	0	0	0	0	7	12	5	0	1	0
SEMINOLE	35	0	0	0	0	0	0	2	3	7	8	12	3	0	0
SUMTER	4	0	0	0	0	0	0	0	0	1	3	0	0	0	0
SUWANNEE	3	0	0	0	0	0	0	0	0	0	2	0	1	0	0
TAYLOR	3	0	0	0	0	0	0	1	1	1	0	0	0	0	0
UNION	4	0	0	0	0	0	0	0	0	1	0	1	1	0	1
VOLUSIA	37	0	0	0	0	0	0	0	0	10	9	9	9	0	0
WAKULLA	1	0	0	0	0	0	0	0	0	0	1	0	0	0	0
WALTON	7	0	0	0	0	0	0	0	1	1	1	3	0	0	1
WASHINGTON	3	0	0	0	0	0	0	0	0	2	1	0	0	0	0



TABLE F-4: RESIDENT AND RECORDED NEONATAL DEATHS (UNDER 28 DAYS) AND RATES PER 1,000 LIVE BIRTHS, BY RACE, BY COUNTY, FLORIDA, 2015

	RESIDENT NEONATAL DEATHS					RATES*		
	NUMBERS					TOTAL	WHITE	BLACK
	TOTAL	WHITE	BLACK	OTHER	UNK			
FLORIDA	984	499	394	84	7	4.4	3.1	8.0
ALACHUA	15	7	8	0	0	5.2	3.9	9.6
BAKER	2	2	0	0	0	6.0	7.0	0.0
BAY	7	5	2	0	0	2.9	2.7	6.5
BRADFORD	3	2	1	0	0	10.2	8.7	18.5
BREVARD	25	14	8	3	0	4.8	3.4	10.6
BROWARD	87	28	53	6	0	3.9	2.3	6.5
CALHOUN	1	0	1	0	0	6.7	0.0	41.7
CHARLOTTE	3	2	1	0	0	2.9	2.2	11.5
CITRUS	6	5	0	0	1	5.9	5.3	0.0
CLAY	4	2	2	0	0	1.8	1.1	6.9
COLLIER	19	15	4	0	0	5.8	5.5	10.1
COLUMBIA	3	1	2	0	0	3.6	1.6	11.4
MIAMI-DADE	118	67	38	13	0	3.6	2.7	5.6
DESOTO	2	1	1	0	0	5.3	3.0	25.6
DIXIE	1	1	0	0	0	7.0	8.1	0.0
DUVAL	73	24	44	4	1	5.6	3.3	9.5
ESCAMBIA	24	6	14	4	0	6.2	2.5	11.7
FLAGLER	5	3	1	1	0	6.3	4.6	11.1
FRANKLIN	0	0	0	0	0	0.0	0.0	0.0
GADSDEN	3	0	3	0	0	5.4	0.0	9.1
GILCHRIST	2	1	0	1	0	10.3	5.6	0.0
GLADES	0	0	0	0	0	0.0	0.0	0.0
GULF	1	1	0	0	0	8.4	10.4	0.0
HAMILTON	2	2	0	0	0	12.0	17.1	0.0
HARDEE	2	2	0	0	0	5.1	5.5	0.0
HENDRY	2	2	0	0	0	3.2	3.7	0.0
HERNANDO	7	5	2	0	0	4.4	3.6	18.3
HIGHLANDS	2	2	0	0	0	2.2	2.8	0.0
HILLSBOROUGH	105	45	41	18	1	6.0	3.5	11.0
HOLMES	1	1	0	0	0	4.6	4.9	0.0
INDIAN RIVER	6	3	2	1	0	4.8	4.0	8.6
JACKSON	2	1	1	0	0	4.0	2.8	8.2
JEFFERSON	0	0	0	0	0	0.0	0.0	0.0
LAFAYETTE	0	0	0	0	0	0.0	0.0	0.0
LAKE	18	12	6	0	0	5.7	4.8	13.0
LEE	31	11	15	5	0	4.6	2.0	14.7
LEON	12	6	6	0	0	3.9	3.8	4.7
LEVY	2	2	0	0	0	5.1	6.2	0.0
LIBERTY	0	0	0	0	0	0.0	0.0	0.0
MADISON	0	0	0	0	0	0.0	0.0	0.0
MANATEE	15	8	6	1	0	4.3	3.0	12.6
MARION	17	8	5	3	1	4.7	2.9	7.5
MARTIN	2	1	1	0	0	1.6	0.9	9.9
MONROE	3	1	1	1	0	4.0	1.6	11.6
NASSAU	3	2	1	0	0	3.7	2.8	18.5
OKALOOSA	9	5	2	2	0	3.2	2.2	7.1
OKEECHOBEE	3	2	1	0	0	5.7	4.3	29.4
ORANGE	85	38	39	6	2	5.1	3.6	8.8
OSCEOLA	13	9	2	2	0	3.1	2.6	4.6
PALM BEACH	50	26	21	3	0	3.4	2.6	5.2
PASCO	16	15	1	0	0	3.1	3.3	3.1
PINELLAS	35	23	9	3	0	4.0	3.5	6.0
POLK	45	18	25	2	0	6.0	3.2	16.8
PUTNAM	5	3	1	0	1	6.1	5.0	5.2
SAINT JOHNS	6	4	2	0	0	2.8	2.2	12.3
SAINT LUCIE	14	6	7	1	0	4.5	3.0	7.8
SANTA ROSA	6	5	0	1	0	3.1	2.9	0.0
SARASOTA	14	11	2	1	0	4.8	4.4	8.1
SEMINOLE	18	12	6	0	0	4.0	3.5	8.8
SUMTER	2	1	1	0	0	4.0	2.5	11.1
SUWANNEE	3	3	0	0	0	6.9	8.5	0.0
TAYLOR	0	0	0	0	0	0.0	0.0	0.0
UNION	0	0	0	0	0	0.0	0.0	0.0
VOLUSIA	21	15	4	2	0	4.3	3.9	5.0
WAKULLA	2	1	1	0	0	5.9	3.3	33.3
WALTON	0	0	0	0	0	0.0	0.0	0.0
WASHINGTON	1	1	0	0	0	4.4	5.3	0.0

\*Rates based on neonatal deaths by race of decedent, live births by race of mother.

---- Indicates that no neonatal deaths nor live births occurred for the race group in the county, therefore a rate could not be calculated.

TABLE F-4 (Cont.): RESIDENT AND RECORDED NEONATAL DEATHS (UNDER 28 DAYS) AND RATES PER 1,000 LIVE BIRTHS, BY RACE, BY COUNTY, FLORIDA, 2015

	RECORDED NEONATAL DEATHS					RATES*		
	NUMBERS					TOTAL	WHITE	BLACK
	TOTAL	WHITE	BLACK	OTHER	UNK			
FLORIDA	995	503	397	87	8	4.4	3.1	8.1
ALACHUA	50	25	18	3	4	8.3	5.8	13.8
BAKER	0	0	0	0	0	0.0	0.0	0.0
BAY	10	7	2	1	0	3.5	3.1	5.6
BRADFORD	1	1	0	0	0	500.0	500.0	----
BREVARD	8	5	2	1	0	1.6	1.2	2.8
BROWARD	96	30	54	12	0	4.0	2.3	6.0
CALHOUN	0	0	0	0	0	0.0	----	0.0
CHARLOTTE	1	0	1	0	0	0.9	0.0	10.2
CITRUS	3	3	0	0	0	3.5	3.8	0.0
CLAY	4	1	3	0	0	1.7	0.6	6.4
COLLIER	14	12	2	0	0	4.0	4.1	5.0
COLUMBIA	4	3	1	0	0	5.2	5.4	5.3
MIAMI-DADE	123	73	43	7	0	4.2	3.2	7.6
DESOTO	1	0	1	0	0	3.0	0.0	35.7
DIXIE	0	0	0	0	0	----	----	----
DUVAL	88	38	43	5	2	6.0	4.3	9.6
ESCAMBIA	36	15	14	7	0	6.4	3.8	10.9
FLAGLER	0	0	0	0	0	0.0	0.0	0.0
FRANKLIN	0	0	0	0	0	0.0	0.0	----
GADSDEN	0	0	0	0	0	0.0	0.0	0.0
GILCHRIST	0	0	0	0	0	0.0	0.0	----
GLADES	0	0	0	0	0	----	----	----
GULF	0	0	0	0	0	----	----	----
HAMILTON	0	0	0	0	0	----	----	----
HARDEE	0	0	0	0	0	0.0	0.0	----
HENDRY	0	0	0	0	0	0.0	0.0	0.0
HERNANDO	4	4	0	0	0	2.3	2.6	0.0
HIGHLANDS	2	2	0	0	0	1.7	2.1	0.0
HILLSBOROUGH	140	66	56	18	0	6.9	4.4	13.6
HOLMES	0	0	0	0	0	0.0	----	----
INDIAN RIVER	3	3	0	0	0	2.9	5.1	0.0
JACKSON	1	1	0	0	0	2.2	3.1	0.0
JEFFERSON	0	0	0	0	0	0.0	0.0	----
LAFAYETTE	0	0	0	0	0	----	----	----
LAKE	10	7	3	0	0	3.8	3.4	6.6
LEE	35	15	15	5	0	5.0	2.6	14.5
LEON	18	5	13	0	0	3.8	1.9	6.9
LEVY	0	0	0	0	0	0.0	0.0	0.0
LIBERTY	0	0	0	0	0	----	----	----
MADISON	0	0	0	0	0	0.0	0.0	----
MANATEE	7	3	3	1	0	2.7	1.5	9.0
MARION	5	4	0	1	0	1.9	2.0	0.0
MARTIN	2	2	0	0	0	2.0	2.5	0.0
MONROE	2	0	1	1	0	3.8	0.0	13.0
NASSAU	0	0	0	0	0	0.0	0.0	0.0
OKALOOSA	5	2	2	1	0	2.0	1.0	7.8
OKEECHOBEE	1	0	1	0	0	100.0	0.0	1,000.0
ORANGE	164	82	69	11	2	7.5	5.6	14.0
OSCEOLA	1	1	0	0	0	0.2	0.3	0.0
PALM BEACH	44	23	19	2	0	2.5	2.0	4.1
PASCO	5	3	1	1	0	2.3	1.6	6.7
PINELLAS	55	39	11	5	0	5.4	5.1	7.1
POLK	16	6	9	1	0	2.9	1.4	8.1
PUTNAM	0	0	0	0	0	0.0	0.0	0.0
SAINT JOHNS	2	1	1	0	0	1.3	0.8	4.8
SAINT LUCIE	10	5	4	1	0	3.1	2.3	4.5
SANTA ROSA	1	1	0	0	0	2.6	2.9	0.0
SARASOTA	9	7	1	1	0	2.5	2.3	2.7
SEMINOLE	3	1	2	0	0	1.0	0.5	3.2
SUMTER	0	0	0	0	0	0.0	0.0	----
SUWANNEE	0	0	0	0	0	0.0	0.0	0.0
TAYLOR	0	0	0	0	0	0.0	0.0	----
UNION	0	0	0	0	0	----	----	----
VOLUSIA	10	7	1	2	0	2.4	2.1	1.4
WAKULLA	0	0	0	0	0	0.0	0.0	----
WALTON	1	0	1	0	0	0.8	0.0	20.4
WASHINGTON	0	0	0	0	0	----	----	----

\*Rates based on neonatal deaths by race of decedent, live births by race of mother.

---- Indicates that no neonatal deaths nor live births occurred for the race group in the county, therefore a rate could not be calculated.

TABLE F-5: RESIDENT AND RECORDED INFANT DEATHS (UNDER 1 YEAR) AND RATES PER 1,000 LIVE BIRTHS, BY RACE, BY COUNTY, FLORIDA, 2015

	RESIDENT INFANT DEATHS					RATES*		
	NUMBERS					RATES*		
	TOTAL	WHITE	BLACK	OTHER	UNK	TOTAL	WHITE	BLACK
FLORIDA	1400	711	558	124	7	6.2	4.4	11.4
ALACHUA	20	8	11	1	0	6.9	4.5	13.2
BAKER	4	3	1	0	0	11.9	10.5	23.3
BAY	13	8	4	1	0	5.4	4.3	12.9
BRADFORD	5	3	2	0	0	17.0	13.1	37.0
BREVARD	33	22	8	3	0	6.3	5.3	10.6
BROWARD	121	37	75	9	0	5.4	3.0	9.1
CALHOUN	1	0	1	0	0	6.7	0.0	41.7
CHARLOTTE	7	4	2	1	0	6.8	4.5	23.0
CITRUS	10	9	0	0	1	9.8	9.5	0.0
CLAY	11	9	2	0	0	4.9	5.0	6.9
COLLIER	22	18	4	0	0	6.8	6.6	10.1
COLUMBIA	8	4	4	0	0	9.7	6.4	22.7
MIAMI-DADE	157	83	60	14	0	4.8	3.4	8.8
DESOTO	5	4	1	0	0	13.3	12.0	25.6
DIXIE	1	1	0	0	0	7.0	8.1	0.0
DUVAL	103	35	60	7	1	7.9	4.8	13.0
ESCAMBIA	30	8	18	4	0	7.7	3.3	15.0
FLAGLER	5	3	1	1	0	6.3	4.6	11.1
FRANKLIN	0	0	0	0	0	0.0	0.0	0.0
GADSDEN	5	0	5	0	0	9.0	0.0	15.1
GILCHRIST	2	1	0	1	0	10.3	5.6	0.0
GLADES	0	0	0	0	0	0.0	0.0	0.0
GULF	2	2	0	0	0	16.8	20.8	0.0
HAMILTON	2	2	0	0	0	12.0	17.1	0.0
HARDEE	2	2	0	0	0	5.1	5.5	0.0
HENDRY	2	2	0	0	0	3.2	3.7	0.0
HERNANDO	11	8	3	0	0	6.9	5.7	27.5
HIGHLANDS	3	3	0	0	0	3.3	4.2	0.0
HILLSBOROUGH	140	65	49	25	1	8.0	5.1	13.1
HOLMES	2	1	0	1	0	9.1	4.9	0.0
INDIAN RIVER	9	5	3	1	0	7.2	6.6	12.9
JACKSON	4	2	1	1	0	8.1	5.6	8.2
JEFFERSON	0	0	0	0	0	0.0	0.0	0.0
LAFAYETTE	0	0	0	0	0	0.0	0.0	0.0
LAKE	27	16	11	0	0	8.5	6.4	23.8
LEE	41	14	21	6	0	6.1	2.5	20.5
LEON	22	8	11	3	0	7.2	5.1	8.5
LEVY	4	2	1	1	0	10.2	6.2	19.2
LIBERTY	0	0	0	0	0	0.0	0.0	0.0
MADISON	0	0	0	0	0	0.0	0.0	0.0
MANATEE	20	11	8	1	0	5.8	4.1	16.8
MARION	25	15	6	3	1	7.0	5.4	9.0
MARTIN	6	4	2	0	0	4.8	3.8	19.8
MONROE	3	1	1	1	0	4.0	1.6	11.6
NASSAU	4	3	1	0	0	5.0	4.1	18.5
OKALOOSA	15	8	5	2	0	5.3	3.5	17.7
OKEECHOBEE	3	2	1	0	0	5.7	4.3	29.4
ORANGE	107	48	48	9	2	6.4	4.5	10.8
OSCEOLA	21	13	4	4	0	5.0	3.7	9.1
PALM BEACH	73	32	37	4	0	4.9	3.2	9.1
PASCO	23	19	2	2	0	4.5	4.2	6.2
PINELLAS	56	35	15	6	0	6.4	5.4	10.0
POLK	64	29	33	2	0	8.6	5.1	22.2
PUTNAM	8	5	1	1	1	9.8	8.4	5.2
SAINT JOHNS	10	7	2	1	0	4.6	3.8	12.3
SAINT LUCIE	18	7	10	1	0	5.8	3.5	11.2
SANTA ROSA	7	6	0	1	0	3.6	3.4	0.0
SARASOTA	17	14	2	1	0	5.8	5.6	8.1
SEMINOLE	22	15	7	0	0	4.8	4.4	10.2
SUMTER	6	4	1	1	0	12.0	10.0	11.1
SUWANNEE	3	3	0	0	0	6.9	8.5	0.0
TAYLOR	3	2	1	0	0	12.0	10.3	20.4
UNION	0	0	0	0	0	0.0	0.0	0.0
VOLUSIA	41	30	8	3	0	8.3	7.7	10.1
WAKULLA	3	2	1	0	0	8.9	6.6	33.3
WALTON	6	3	2	1	0	7.4	4.0	71.4
WASHINGTON	1	1	0	0	0	4.4	5.3	0.0

\*Rates based on infant deaths by race of decedent, live births by race of mother.

--- Indicates that no neonatal deaths nor live births occurred for the race group in the county, therefore a rate could not be calculated.

TABLE F-5 (Cont.): RESIDENT AND RECORDED INFANT DEATHS (UNDER 1 YEAR) AND RATES PER 1,000 LIVE BIRTHS, BY RACE, BY COUNTY, FLORIDA, 2015

	RECORDED INFANT DEATHS					RATES*		
	NUMBERS					RATES*		
	TOTAL	WHITE	BLACK	OTHER	UNK	TOTAL	WHITE	BLACK
FLORIDA	1423	724	563	128	8	6.3	4.5	11.4
ALACHUA	66	32	24	6	4	11.0	7.4	18.5
BAKER	2	2	0	0	0	666.7	2,000.0	0.0
BAY	16	10	4	2	0	5.6	4.5	11.2
BRADFORD	2	1	1	0	0	1,000.0	500.0	----
BREVARD	13	10	2	1	0	2.5	2.4	2.8
BROWARD	130	38	77	15	0	5.4	2.9	8.5
CALHOUN	0	0	0	0	0	0.0	----	0.0
CHARLOTTE	4	1	2	1	0	3.5	1.0	20.4
CITRUS	5	5	0	0	0	5.9	6.4	0.0
CLAY	9	6	3	0	0	3.9	3.6	6.4
COLLIER	15	13	2	0	0	4.3	4.4	5.0
COLUMBIA	7	4	3	0	0	9.2	7.2	15.8
MIAMI-DADE	172	93	70	9	0	5.8	4.0	12.3
DESOTO	1	0	1	0	0	3.0	0.0	35.7
DIXIE	0	0	0	0	0	----	----	----
DUVAL	130	57	62	9	2	8.8	6.4	13.8
ESCAMBIA	46	19	20	7	0	8.2	4.8	15.6
FLAGLER	0	0	0	0	0	0.0	0.0	0.0
FRANKLIN	0	0	0	0	0	0.0	0.0	----
GADSDEN	0	0	0	0	0	0.0	0.0	0.0
GILCHRIST	0	0	0	0	0	0.0	0.0	----
GLADES	0	0	0	0	0	----	----	----
GULF	1	1	0	0	0	----	----	----
HAMILTON	0	0	0	0	0	----	----	----
HARDEE	0	0	0	0	0	0.0	0.0	----
HENDRY	0	0	0	0	0	0.0	0.0	0.0
HERNANDO	8	6	1	1	0	4.6	3.9	9.4
HIGHLANDS	4	4	0	0	0	3.4	4.2	0.0
HILLSBOROUGH	180	90	67	23	0	8.9	6.0	16.2
HOLMES	1	0	0	1	0	1,000.0	----	----
INDIAN RIVER	7	6	1	0	0	6.7	10.2	5.1
JACKSON	3	2	0	1	0	6.7	6.2	0.0
JEFFERSON	0	0	0	0	0	0.0	0.0	----
LAFAYETTE	0	0	0	0	0	----	----	----
LAKE	17	11	6	0	0	6.4	5.4	13.2
LEE	44	18	20	6	0	6.3	3.1	19.3
LEON	32	8	22	2	0	6.8	3.0	11.7
LEVY	1	0	1	0	0	111.1	0.0	1,000.0
LIBERTY	0	0	0	0	0	----	----	----
MADISON	0	0	0	0	0	0.0	0.0	----
MANATEE	10	5	4	1	0	3.8	2.5	12.0
MARION	11	9	1	1	0	4.3	4.6	2.1
MARTIN	5	5	0	0	0	5.1	6.2	0.0
MONROE	2	0	1	1	0	3.8	0.0	13.0
NASSAU	0	0	0	0	0	0.0	0.0	0.0
OKALOOSA	7	3	3	1	0	2.8	1.5	11.7
OKEECHOBEE	1	0	1	0	0	100.0	0.0	1,000.0
ORANGE	209	110	80	17	2	9.6	7.4	16.2
OSCEOLA	6	5	1	0	0	1.4	1.4	2.2
PALM BEACH	65	30	33	2	0	3.7	2.6	7.2
PASCO	10	7	2	1	0	4.6	3.7	13.3
PINELLAS	85	57	17	11	0	8.4	7.4	10.9
POLK	32	15	15	2	0	5.8	3.6	13.6
PUTNAM	2	1	0	1	0	7.6	5.7	0.0
SAINT JOHNS	2	1	1	0	0	1.3	0.8	4.8
SAINT LUCIE	11	5	5	1	0	3.4	2.3	5.7
SANTA ROSA	3	3	0	0	0	7.9	8.8	0.0
SARASOTA	11	9	1	1	0	3.1	3.0	2.7
SEMINOLE	6	3	3	0	0	2.0	1.4	4.8
SUMTER	0	0	0	0	0	0.0	0.0	----
SUWANNEE	0	0	0	0	0	0.0	0.0	0.0
TAYLOR	2	2	0	0	0	1,000.0	1,000.0	----
UNION	0	0	0	0	0	----	----	----
VOLUSIA	22	16	3	3	0	5.2	4.8	4.2
WAKULLA	0	0	0	0	0	0.0	0.0	----
WALTON	5	1	3	1	0	4.2	0.9	61.2
WASHINGTON	0	0	0	0	0	----	----	----

\*Rates based on infant deaths by race of decedent, live births by race of mother.

---- Indicates that no neonatal deaths nor live births occurred for the race group in the county, therefore a rate could not be calculated.

TABLE F-6: RESIDENT INFANT DEATHS AND RATE PER 1,000 LIVE BIRTHS BY HISPANIC OR HAITIAN ORIGIN, BY COUNTY, FLORIDA, 2015

	NUMBERS										RATE
	HISPANIC ORIGIN										
	TOTAL	TOTAL HISPANIC			OTHER/UNK			NON-HISPANIC/HAITIAN		TOTAL HISPANIC	
	HISPANIC	MEXICAN	PUERTO RICAN	CUBAN	HAITIAN	UNK					
FLORIDA	1,400	307	72	88	54	93	79	962	52	4.8	
ALACHUA	20	1	0	0	0	1	0	18	1	4.0	
BAKER	4	0	0	0	0	0	0	4	0	0.0	
BAY	13	0	0	0	0	0	1	12	0	0.0	
BRADFORD	5	0	0	0	0	0	0	5	0	0.0	
BREVARD	33	6	1	1	1	3	1	25	1	9.3	
BROWARD	121	17	1	3	6	7	20	73	11	2.5	
CALHOUN	1	1	1	0	0	0	0	0	0	125.0	
CHARLOTTE	7	2	1	1	0	0	0	5	0	18.2	
CITRUS	10	2	0	2	0	0	0	7	1	32.3	
CLAY	11	1	0	1	0	0	0	10	0	4.6	
COLLIER	22	10	5	1	2	2	4	8	0	6.5	
COLUMBIA	8	0	0	0	0	0	0	8	0	0.0	
MIAMI-DADE	157	74	7	7	32	28	15	61	7	3.7	
DESOTO	5	4	4	0	0	0	0	1	0	29.6	
DIXIE	1	0	0	0	0	0	0	1	0	0.0	
DUVAL	103	10	0	4	0	6	1	87	5	7.2	
ESCAMBIA	30	1	1	0	0	0	0	28	1	4.4	
FLAGLER	5	1	1	0	0	0	0	4	0	11.2	
FRANKLIN	0	0	0	0	0	0	0	0	0	0.0	
GADSDEN	5	0	0	0	0	0	0	5	0	0.0	
GILCHRIST	2	0	0	0	0	0	0	2	0	0.0	
GLADES	0	0	0	0	0	0	0	0	0	0.0	
GULF	2	0	0	0	0	0	0	2	0	0.0	
HAMILTON	2	1	0	0	0	1	0	1	0	26.3	
HARDEE	2	1	1	0	0	0	0	1	0	4.3	
HENDRY	2	1	0	0	0	1	0	1	0	2.5	
HERNANDO	11	3	1	2	0	0	0	8	0	13.4	
HIGHLANDS	3	1	1	0	0	0	0	2	0	3.7	
HILLSBOROUGH	140	41	9	18	7	7	4	93	2	7.7	
HOLMES	2	0	0	0	0	0	0	2	0	0.0	
INDIAN RIVER	9	1	0	0	0	1	0	8	0	3.9	
JACKSON	4	0	0	0	0	0	0	4	0	0.0	
JEFFERSON	0	0	0	0	0	0	0	0	0	0.0	
LAFAYETTE	0	0	0	0	0	0	0	0	0	0.0	
LAKE	27	2	1	1	0	0	0	24	1	3.3	
LEE	41	5	3	0	0	2	5	31	0	2.4	
LEON	22	0	0	0	0	0	0	22	0	0.0	
LEVY	4	0	0	0	0	0	0	4	0	0.0	
LIBERTY	0	0	0	0	0	0	0	0	0	0.0	
MADISON	0	0	0	0	0	0	0	0	0	0.0	
MANATEE	20	7	4	1	0	2	0	13	0	7.4	
MARION	25	3	1	1	0	1	0	19	3	5.5	
MARTIN	6	1	0	0	0	1	0	5	0	2.6	
MONROE	3	0	0	0	0	0	1	2	0	0.0	
NASSAU	4	0	0	0	0	0	0	4	0	0.0	
OKALOOSA	15	1	0	0	0	1	0	14	0	2.7	
OKEECHOBEE	3	1	1	0	0	0	0	2	0	6.0	
ORANGE	107	30	4	20	2	4	8	62	7	5.6	
OSCEOLA	21	8	0	5	1	2	1	12	0	3.5	
PALM BEACH	73	19	3	4	1	11	14	37	3	4.2	
PASCO	23	3	1	1	0	1	0	20	0	3.6	
PINELLAS	56	12	6	3	0	3	0	42	2	10.4	
POLK	64	14	4	5	1	4	2	47	1	7.1	
PUTNAM	8	2	2	0	0	0	0	5	1	16.5	
SAINT JOHNS	10	0	0	0	0	0	0	10	0	0.0	
SAINT LUCIE	18	3	1	2	0	0	1	12	2	4.3	
SANTA ROSA	7	0	0	0	0	0	0	7	0	0.0	
SARASOTA	17	4	3	1	0	0	0	12	1	12.4	
SEMINOLE	22	4	1	0	1	2	1	17	0	4.0	
SUMTER	6	2	0	1	0	1	0	4	0	35.7	
SUWANNEE	3	0	0	0	0	0	0	2	1	0.0	
TAYLOR	3	0	0	0	0	0	0	3	0	0.0	
UNION	0	0	0	0	0	0	0	0	0	0.0	
VOLUSIA	41	5	1	3	0	1	0	36	0	6.7	
WAKULLA	3	0	0	0	0	0	0	3	0	0.0	
WALTON	6	2	2	0	0	0	0	4	0	19.2	
WASHINGTON	1	0	0	0	0	0	0	1	0	0.0	

**TABLE F-7: RESIDENT INFANT, NEONATAL AND POST-NEONATAL DEATHS FROM SELECTED CAUSES  
BY RACE, FLORIDA, 2015**

	TOTAL			POST NEO- NATAL	WHITE			POST NEO- NATAL
	NEONATAL		1-27 DAYS		NEONATAL		1-27 DAYS	
	<1 DAY	1-27 DAYS			<1 DAY	1-27 DAYS		
INFANT	DAY	DAYS	NATAL	INFANT	DAY	DAYS	NATAL	
<b>TOTAL</b>	<b>1,400</b>	<b>556</b>	<b>428</b>	<b>416</b>	<b>711</b>	<b>276</b>	<b>223</b>	<b>212</b>
Intestinal Infectious Disease	0	0	0	0	0	0	0	0
Diarrhea & Gastroenteritis--Infectious Origin	12	0	0	12	3	0	0	3
Tuberculosis	0	0	0	0	0	0	0	0
Tetanus	0	0	0	0	0	0	0	0
Diphtheria	0	0	0	0	0	0	0	0
Whooping Cough	0	0	0	0	0	0	0	0
Meningococcal Infection	1	0	0	1	1	0	0	1
Septicemia	15	0	0	15	5	0	0	5
Congenital Syphilis	0	0	0	0	0	0	0	0
Gonococcal Infection	0	0	0	0	0	0	0	0
Acute Poliomyelitis	0	0	0	0	0	0	0	0
Varicella (Chicken Pox)	0	0	0	0	0	0	0	0
Measles	0	0	0	0	0	0	0	0
HIV Disease	1	0	1	0	0	0	0	0
Mumps	0	0	0	0	0	0	0	0
Other & Unspec Viral Diseases	8	0	2	6	6	0	2	4
Candidiasis	0	0	0	0	0	0	0	0
Malaria	0	0	0	0	0	0	0	0
Pneumocystosis	0	0	0	0	0	0	0	0
Other & Unspecified Infectious & Parasitic Diseases	2	1	1	0	1	1	0	0
Hodgkins Disease & Non-Hodgkins Lymphomas	0	0	0	0	0	0	0	0
Leukemia	0	0	0	0	0	0	0	0
Other & Unspecified Malignant Neoplasm	2	0	0	2	1	0	0	1
In Situ/Benign/Malignant Neoplasms Uncert/Unk Behavior	3	0	1	2	3	0	1	2
Anemias	1	0	0	1	0	0	0	0
Blood, Blood-Forming, Hemorrhagic Diseases	4	0	4	0	3	0	3	0
Disorders Involving Immune Mechanism	1	0	1	0	0	0	0	0
Short Stature	0	0	0	0	0	0	0	0
Nutritional Deficiencies	1	0	0	1	0	0	0	0
Cystic Fibrosis	0	0	0	0	0	0	0	0
Fluid/Electrolyte/Acid-Base/Volume Depletion Disorders	1	0	0	1	1	0	0	1
Other Endocrine, Nutritional, Metabolic Diseases	5	0	3	2	4	0	3	1
Meningitis	6	0	2	4	2	0	2	0
Infantile Spinal Muscular Atrophy, Type 1 (Werdnig-Hoffman)	0	0	0	0	0	0	0	0
Infantile Cerebral Palsy	0	0	0	0	0	0	0	0
Anoxic Brain Damage	3	0	0	3	3	0	0	3
Other Nervous System Diseases	8	0	2	6	4	0	1	3
Ear & Mastoid Process Diseases	0	0	0	0	0	0	0	0
Pulmonary Heart/Circulation Diseases	3	0	0	3	3	0	0	3
Pericarditis, Endocarditis, Myocarditis	2	0	0	2	1	0	0	1
Cardiomyopathy	7	0	2	5	5	0	1	4
Cardiac Arrest	1	0	0	1	1	0	0	1
Cerebrovascular Diseases	1	0	0	1	0	0	0	0
Other Circulatory System Diseases	5	0	2	3	2	0	0	2
Acute Upper Respiratory Infections	1	0	1	0	1	0	1	0
Influenza	0	0	0	0	0	0	0	0
Pneumonia	7	0	0	7	2	0	0	2

TABLE F-7 (Cont.): RESIDENT INFANT, NEONATAL AND POST-NEONATAL DEATHS FROM SELECTED CAUSES, BY RACE, FLORIDA, 2015

	TOTAL			POST NEO-	WHITE			POST NEO-
	NEONATAL		INFANT		NEONATAL		INFANT	
	<1 DAY	1-27 DAYS			<1 DAY	1-27 DAYS		
Acute Bronchitis & Acute Bronchiolitis	2	0	0	2	0	0	0	0
Bronchitis, Chronic & Unspecified	2	0	0	2	1	0	0	1
Asthma	0	0	0	0	0	0	0	0
Pneumonitis Due to Solids & Liquids	0	0	0	0	0	0	0	0
Other & Unspecified Respiratory System Diseases	12	0	0	12	7	0	0	7
Gastritis, Duodenitis, Noninfective Enteritis/Colitis	1	0	1	0	1	0	1	0
Hernia Abdom Cavity & Intestinal Obstruct W/O Hernia	3	0	1	2	3	0	1	2
Other & Unspec Digestive System Disease	4	0	2	2	1	0	1	0
Renal Failure & Other Kidney Disorders	7	0	6	1	4	0	4	0
Other & Unspec Genitourinary System Dis	2	0	1	1	1	0	1	0
<b>PERINATAL PERIOD CONDITIONS</b>	<b>756</b>	<b>461</b>	<b>272</b>	<b>23</b>	<b>352</b>	<b>209</b>	<b>130</b>	<b>13</b>
Maternal Hypertensive Disorders	6	6	0	0	1	1	0	0
Maternal Conditions Unrelated Present Pregnancy	12	11	1	0	9	8	1	0
Incompetent Cervix	40	36	4	0	13	11	2	0
Premature Rupture of Membranes	52	45	6	1	27	23	3	1
Multiple Pregnancy	6	5	1	0	3	2	1	0
Maternal Complications of Pregnancy	21	20	1	0	16	16	0	0
Placenta Complications	23	19	4	0	10	9	1	0
Cord Complications	4	2	2	0	2	0	2	0
Chorioamnionitis	33	30	3	0	11	10	1	0
Other & Unspecified Membrane Abnormalities	0	0	0	0	0	0	0	0
Other Complications of Labor & Delivery	8	8	0	0	5	5	0	0
Noxious Influences Via Placenta or Breast Milk	6	6	0	0	1	1	0	0
Slow Fetal Growth & Fetal Malnutrition	8	3	4	1	4	2	2	0
Extreme Low Birth Weight or Extreme Immaturity	174	141	29	4	79	58	18	3
Other Low Birth Weight or Preterm	66	59	5	2	26	23	2	1
Long Gestation & High Birth Weight	0	0	0	0	0	0	0	0
Birth Trauma	0	0	0	0	0	0	0	0
Intrauterine Hypoxia	19	9	10	0	6	4	2	0
Birth Asphyxia	7	2	4	1	4	1	3	0
Respiratory Distress	29	11	17	1	15	6	8	1
Congenital Pneumonia	5	0	5	0	2	0	2	0
Neonatal Aspiration Syndromes	1	0	0	1	1	0	0	1
Interstitial Emphysema & Related Conditions	6	2	4	0	4	2	2	0
Pulmonary Hemorrhage	12	0	12	0	5	0	5	0
Chronic Respiratory Disease	3	0	1	2	2	0	1	1
Atelectasis	13	8	4	1	8	4	3	1
Other Respiratory Conditions	2	1	0	1	1	0	0	1
Bacterial Sepsis	51	3	45	3	22	3	17	2
Omphalitis With or Without Hemorrhage	0	0	0	0	0	0	0	0
All Other Infections	6	0	4	2	2	0	2	0
Neonatal Hemorrhage	32	1	31	0	14	1	13	0
Hemorrhagic Disease of Newborn	0	0	0	0	0	0	0	0
Hemolytic Dis Due to Isoimmunization/Perinat Jaundice	0	0	0	0	0	0	0	0
Hematological Disorders	6	3	3	0	4	2	2	0
Diabetes Mellitus, Maternal or Neonatal	1	1	0	0	0	0	0	0
Necrotizing Enterocolitis	20	0	20	0	7	0	7	0
Hydrops Fetalis Not Due To Hemolytic Dis	14	6	8	0	12	6	6	0

TABLE F-7 (Cont.): RESIDENT INFANT, NEONATAL AND POST-NEONATAL DEATHS FROM SELECTED CAUSES, BY RACE, FLORIDA, 2015

	TOTAL			POST NEO- NATAL	WHITE			POST NEO- NATAL
	NEONATAL		INFANT		NEONATAL		INFANT	
	<1 DAY	1-27 DAYS			<1 DAY	1-27 DAYS		
Other Perinatal Conditions	70	23	44	3	36	11	24	1
<b>CONGENITAL / CHROMOSOMAL ANOMALIES</b>	<b>266</b>	<b>88</b>	<b>109</b>	<b>69</b>	<b>163</b>	<b>64</b>	<b>62</b>	<b>37</b>
Anencephaly & Similar Anomalies	18	10	8	0	14	8	6	0
Congenital Hydrocephalus	5	0	2	3	3	0	0	3
Spina Bifida	1	1	0	0	1	1	0	0
Other Cong Malf Nervous System	14	2	8	4	12	1	8	3
Congenital Malf of Heart	61	13	29	19	34	9	14	11
Other Congenital Malf of Circulatory Sys	10	0	7	3	6	0	5	1
Congenital Malf of Respiratory Sys	14	4	8	2	8	2	5	1
Congenital Anomalies of Digestive Sys	2	0	0	2	0	0	0	0
Congenital Malf of Genitourinary Sys	26	13	12	1	18	11	7	0
Congenital Malf of Musculoskeletal Sys	28	6	11	11	13	4	6	3
Downs Syndrome	5	2	0	3	3	1	0	2
Edwards Syndrome	34	10	10	14	18	8	2	8
Pataus Syndrome	14	7	5	2	10	6	3	1
Other Congenital Malf	30	19	6	5	21	13	4	4
Other Chromosomal Abnorm	4	1	3	0	2	0	2	0
Sudden Infant Death Syndrome	59	0	4	55	31	0	2	29
Symptoms, Signs, Abn Clinical/Lab Findings	72	4	2	66	32	1	2	29
All Other Diseases	1	0	1	0	1	0	1	0
Unint Inj: Motor Vehicle	5	1	0	4	4	1	0	3
Unint Inj: Other & Unspecified Transport	0	0	0	0	0	0	0	0
Unint Inj: Falls	0	0	0	0	0	0	0	0
Unint Inj: Firearms Discharge	1	1	0	0	0	0	0	0
Unint Inj: Drowning & Submersion	6	0	0	6	3	0	0	3
Unint Inj: Suffocation & Strangulation in Bed	68	0	6	62	37	0	4	33
Unint Inj: Other Suffocation & Strangulation	12	0	0	12	5	0	0	5
Unint Inj: Inhale/Ingest--Respiratory Tract Obstruction	1	0	0	1	1	0	0	1
Unint Inj: Smoke, Fire, Flames Exposure	1	0	0	1	1	0	0	1
Unint Inj: Poisoning & Noxious Substance Exposure	1	0	1	0	0	0	0	0
Unint Inj: Other & Unspecified	3	0	0	3	1	0	0	1
Homicide: Hanging, Strangulation, Suffocation	3	0	0	3	2	0	0	2
Homicide: Firearms Discharge	2	0	0	2	0	0	0	0
Homicide: Neglect, Abandonment, Maltreatment	4	0	0	4	3	0	0	3
Homicide: Other & Unspecified Means	3	0	0	3	3	0	0	3
Medical & Surgical Care Complications	2	0	0	2	2	0	0	2
Other External Causes	0	0	0	0	0	0	0	0

ICD-10 codes associated with each cause of death group are presented in Appendix 2.



TABLE F-7 (Cont.): RESIDENT INFANT, NEONATAL AND POST-NEONATAL DEATHS FROM SELECTED CAUSES, BY RACE, FLORIDA, 2015

	BLACK			POST NEO- NATAL	OTHER			POST NEO- NATAL
	NEONATAL		INFANT		NEONATAL		INFANT	
	<1 DAY	1-27 DAYS			<1 DAY	1-27 DAYS		
TOTAL	558	227	167	164	124	47	37	40
Intestinal Infectious Disease	0	0	0	0	0	0	0	0
Diarrhea & Gastroenteritis--Infectious Origin	7	0	0	7	2	0	0	2
Tuberculosis	0	0	0	0	0	0	0	0
Tetanus	0	0	0	0	0	0	0	0
Diphtheria	0	0	0	0	0	0	0	0
Whooping Cough	0	0	0	0	0	0	0	0
Meningococcal Infection	0	0	0	0	0	0	0	0
Septicemia	8	0	0	8	2	0	0	2
Congenital Syphilis	0	0	0	0	0	0	0	0
Gonococcal Infection	0	0	0	0	0	0	0	0
Acute Poliomyelitis	0	0	0	0	0	0	0	0
Varicella (Chicken Pox)	0	0	0	0	0	0	0	0
Measles	0	0	0	0	0	0	0	0
HIV Disease	1	0	1	0	0	0	0	0
Mumps	0	0	0	0	0	0	0	0
Other & Unspec Viral Diseases	1	0	0	1	1	0	0	1
Candidiasis	0	0	0	0	0	0	0	0
Malaria	0	0	0	0	0	0	0	0
Pneumocystosis	0	0	0	0	0	0	0	0
Other & Unspecified Infectious & Parasitic Diseases	1	0	1	0	0	0	0	0
Hodgkins Disease & Non-Hodgkins Lymphomas	0	0	0	0	0	0	0	0
Leukemia	0	0	0	0	0	0	0	0
Other & Unspecified Malignant Neoplasm	0	0	0	0	1	0	0	1
In Situ/Benign/Malignant Neoplasms Uncert/Unk Behavior	0	0	0	0	0	0	0	0
Anemias	1	0	0	1	0	0	0	0
Blood, Blood-Forming, Hemorrhagic Diseases	1	0	1	0	0	0	0	0
Disorders Involving Immune Mechanism	1	0	1	0	0	0	0	0
Short Stature	0	0	0	0	0	0	0	0
Nutritional Deficiencies	0	0	0	0	1	0	0	1
Cystic Fibrosis	0	0	0	0	0	0	0	0
Fluid/Electrolyte/Acid-Base/Volume Depletion Disorders	0	0	0	0	0	0	0	0
Other Endocrine, Nutritional, Metabolic Diseases	1	0	0	1	0	0	0	0
Meningitis	4	0	0	4	0	0	0	0
Infantile Spinal Muscular Atrophy, Type 1 (Werdnig-Hoffman)	0	0	0	0	0	0	0	0
Infantile Cerebral Palsy	0	0	0	0	0	0	0	0
Anoxic Brain Damage	0	0	0	0	0	0	0	0
Other Nervous System Diseases	3	0	0	3	1	0	1	0
Ear & Mastoid Process Diseases	0	0	0	0	0	0	0	0
Pulmonary Heart/Circulation Diseases	0	0	0	0	0	0	0	0
Pericarditis, Endocarditis, Myocarditis	1	0	0	1	0	0	0	0
Cardiomyopathy	1	0	0	1	1	0	1	0
Cardiac Arrest	0	0	0	0	0	0	0	0
Cerebrovascular Diseases	0	0	0	0	1	0	0	1
Other Circulatory System Diseases	2	0	1	1	1	0	1	0
Acute Upper Respiratory Infections	0	0	0	0	0	0	0	0
Influenza	0	0	0	0	0	0	0	0

TABLE F-7 (Cont.): RESIDENT INFANT, NEONATAL AND POST-NEONATAL DEATHS FROM SELECTED CAUSES, BY RACE, FLORIDA, 2015

	BLACK			POST NEO- NATAL	OTHER			POST NEO- NATAL
	NEONATAL		INFANT		NEONATAL		INFANT	
	<1 DAY	1-27 DAYS			<1 DAY	1-27 DAYS		
Pneumonia	4	0	0	4	1	0	0	1
Acute Bronchitis & Acute Bronchiolitis	1	0	0	1	1	0	0	1
Bronchitis, Chronic & Unspecified	1	0	0	1	0	0	0	0
Asthma	0	0	0	0	0	0	0	0
Pneumonitis Due to Solids & Liquids	0	0	0	0	0	0	0	0
Other & Unspecified Respiratory System Diseases	5	0	0	5	0	0	0	0
Gastritis, Duodenitis, Noninfective Enteritis/Colitis	0	0	0	0	0	0	0	0
Hernia Abdom Cavity & Intestinal Obstruct W/O Hernia	0	0	0	0	0	0	0	0
Other & Unspec Digestive System Disease	1	0	1	0	2	0	0	2
Renal Failure & Other Kidney Disorders	3	0	2	1	0	0	0	0
Other & Unspec Genitourinary System Dis	1	0	0	1	0	0	0	0
<b>PERINATAL PERIOD CONDITIONS</b>	<b>331</b>	<b>203</b>	<b>118</b>	<b>10</b>	<b>68</b>	<b>44</b>	<b>24</b>	<b>0</b>
Maternal Hypertensive Disorders	4	4	0	0	1	1	0	0
Maternal Conditions Unrelated Present Pregnancy	2	2	0	0	1	1	0	0
Incompetent Cervix	18	17	1	0	8	7	1	0
Premature Rupture of Membranes	23	20	3	0	2	2	0	0
Multiple Pregnancy	3	3	0	0	0	0	0	0
Maternal Complications of Pregnancy	4	3	1	0	0	0	0	0
Placenta Complications	7	4	3	0	6	6	0	0
Cord Complications	2	2	0	0	0	0	0	0
Chorioamnionitis	21	19	2	0	1	1	0	0
Other & Unspecified Membrane Abnormalities	0	0	0	0	0	0	0	0
Other Complications of Labor & Delivery	2	2	0	0	0	0	0	0
Noxious Influences Via Placenta or Breast Milk	4	4	0	0	1	1	0	0
Slow Fetal Growth & Fetal Malnutrition	4	1	2	1	0	0	0	0
Extreme Low Birth Weight or Extreme Immaturity	80	69	10	1	15	14	1	0
Other Low Birth Weight or Preterm	34	30	3	1	4	4	0	0
Long Gestation & High Birth Weight	0	0	0	0	0	0	0	0
Birth Trauma	0	0	0	0	0	0	0	0
Intrauterine Hypoxia	12	5	7	0	1	0	1	0
Birth Asphyxia	3	1	1	1	0	0	0	0
Respiratory Distress	12	4	8	0	2	1	1	0
Congenital Pneumonia	2	0	2	0	1	0	1	0
Neonatal Aspiration Syndromes	0	0	0	0	0	0	0	0
Interstitial Emphysema & Related Conditions	2	0	2	0	0	0	0	0
Pulmonary Hemorrhage	5	0	5	0	2	0	2	0
Chronic Respiratory Disease	1	0	0	1	0	0	0	0
Atelectasis	4	3	1	0	1	1	0	0
Other Respiratory Conditions	1	1	0	0	0	0	0	0
Bacterial Sepsis	26	0	25	1	3	0	3	0
Omphalitis With or Without Hemorrhage	0	0	0	0	0	0	0	0
All Other Infections	3	0	1	2	1	0	1	0
Neonatal Hemorrhage	14	0	14	0	4	0	4	0
Hemorrhagic Disease of Newborn	0	0	0	0	0	0	0	0
Hemolytic Dis Due to Isoimmunization/Perinat Jaundice	0	0	0	0	0	0	0	0
Hematological Disorders	2	1	1	0	0	0	0	0
Diabetes Mellitus, Maternal or Neonatal	0	0	0	0	1	1	0	0
Necrotizing Enterocolitis	8	0	8	0	5	0	5	0

TABLE F-7 (Cont.): RESIDENT INFANT, NEONATAL AND POST-NEONATAL DEATHS FROM SELECTED CAUSES, BY RACE, FLORIDA, 2015

	BLACK			POST NEO- NATAL	OTHER			POST NEO- NATAL
	NEONATAL		INFANT		NEONATAL		INFANT	
	<1 DAY	1-27 DAYS			<1 DAY	1-27 DAYS		
Hydrops Fetalis Not Due To Hemolytic Dis	1	0	1	0	1	0	1	0
Other Perinatal Conditions	27	8	17	2	7	4	3	0
<b>CONGENITAL / CHROMOSOMAL ANOMALIES</b>	<b>80</b>	<b>20</b>	<b>37</b>	<b>23</b>	<b>21</b>	<b>3</b>	<b>9</b>	<b>9</b>
Anencephaly & Similar Anomalies	3	2	1	0	1	0	1	0
Congenital Hydrocephalus	2	0	2	0	0	0	0	0
Spina Bifida	0	0	0	0	0	0	0	0
Other Cong Malf Nervous System	2	1	0	1	0	0	0	0
Congenital Malf of Heart	24	3	14	7	2	0	1	1
Other Congenital Malf of Circulatory Sys	2	0	1	1	1	0	0	1
Congenital Malf of Respiratory Sys	3	1	1	1	3	1	2	0
Congenital Anomalies of Digestive Sys	2	0	0	2	0	0	0	0
Congenital Malf of Genitourinary Sys	7	2	4	1	1	0	1	0
Congenital Malf of Musculoskeletal Sys	10	1	4	5	5	1	1	3
Downs Syndrome	2	1	0	1	0	0	0	0
Edwards Syndrome	11	2	5	4	5	0	3	2
Pataus Syndrome	3	1	2	0	1	0	0	1
Other Congenital Malf	7	5	2	0	2	1	0	1
Other Chromosomal Abnorm	2	1	1	0	0	0	0	0
Sudden Infant Death Syndrome	23	0	2	21	5	0	0	5
Symptoms, Signs, Abn Clinical/Lab Findings	34	3	0	31	6	0	0	6
All Other Diseases	0	0	0	0	0	0	0	0
Unint Inj: Motor Vehicle	1	0	0	1	0	0	0	0
Unint Inj: Other & Unspecified Transport	0	0	0	0	0	0	0	0
Unint Inj: Falls	0	0	0	0	0	0	0	0
Unint Inj: Firearms Discharge	1	1	0	0	0	0	0	0
Unint Inj: Drowning & Submersion	1	0	0	1	2	0	0	2
Unint Inj: Suffocation & Strangulation in Bed	28	0	1	27	3	0	1	2
Unint Inj: Other Suffocation & Strangulation	5	0	0	5	2	0	0	2
Unint Inj: Inhale/Ingest--Respiratory Tract Obstruction	0	0	0	0	0	0	0	0
Unint Inj: Smoke, Fire, Flames Exposure	0	0	0	0	0	0	0	0
Unint Inj: Poisoning & Noxious Substance Exposure	1	0	1	0	0	0	0	0
Unint Inj: Other & Unspecified	2	0	0	2	0	0	0	0
Homicide: Hanging, Strangulation, Suffocation	1	0	0	1	0	0	0	0
Homicide: Firearms Discharge	0	0	0	0	2	0	0	2
Homicide: Neglect, Abandonment, Maltreatment	1	0	0	1	0	0	0	0
Homicide: Other & Unspecified Means	0	0	0	0	0	0	0	0
Medical & Surgical Care Complications	0	0	0	0	0	0	0	0
Other External Causes	0	0	0	0	0	0	0	0

ICD-10 codes associated with each cause of death group are presented in Appendix 2.

