

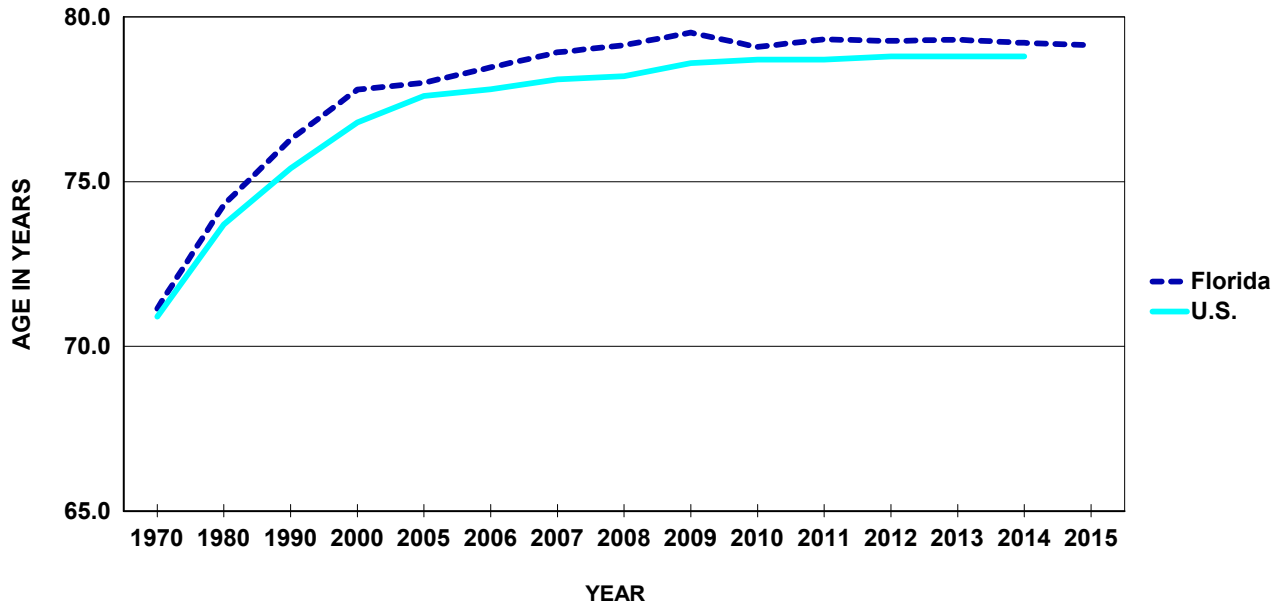
Population

CHART P-1: YEARS OF LIFE EXPECTANCY AT BIRTH, BY RACE, ETHNICITY AND GENDER, FOR FLORIDA RESIDENTS AND UNITED STATES TOTAL, CENSUS YEARS 1970-2000 AND 2005-2015

YEAR	FLORIDA							UNITED STATES			
	TOTAL	WHITE ¹		BLACK ¹		HISPANIC ²		TOTAL	WHITE ¹	BLACK ¹	HISPANIC ²
		MALE	FEMALE	MALE	FEMALE	MALE	FEMALE				
1970	71.1	68.5	77.0	59.1	68.7	NA	NA	70.9	71.1	NA	NA
1980	74.3	71.2	79.4	63.2	72.8	NA	NA	73.7	74.4	68.0	NA
1990	76.3	73.5	81.1	64.4	73.8	NA	NA	75.4	76.1	69.1	NA
2000	77.8	75.5	81.5	69.6	75.7	NA	NA	76.8	77.3	71.8	NA
2005	78.0	75.5	81.5	70.7	76.8	77.5	84.2	77.6	78.0	73.0	NA
2006	78.5	75.9	82.0	71.4	77.3	78.4	84.7	77.8	78.3	73.4	80.3
2007	78.9	76.4	82.4	71.7	78.2	78.6	85.4	78.1	78.5	73.8	80.7
2008	79.1	76.5	82.5	72.5	78.9	79.3	85.3	78.2	78.5	74.3	80.8
2009	79.5	76.9	82.8	73.1	79.1	79.7	86.0	78.6	78.8	74.7	81.1
2010	79.1	76.6	82.2	73.6	79.1	80.5	86.0	78.7	78.9	75.1	81.2
2011	79.3	76.9	82.4	74.1	79.7	80.7	86.1	78.7	79.0	75.3	81.4
2012	79.3	76.9	82.2	74.3	80.2	80.1	85.2	78.8	79.1	75.5	81.6
2013	79.3	77.0	82.2	74.5	80.2	80.5	85.3	78.8	79.1	75.5	81.6
2014	79.2	76.8	82.2	74.8	80.3	80.0	85.4	78.8	79.0	75.6	81.8
2015	79.1	76.6	82.3	74.5	80.6	79.9	85.6	NA	NA	NA	NA

1. Regardless of ethnicity.
2. Regardless of race

GRAPH P-1: YEARS OF LIFE EXPECTANCY AT BIRTH, FLORIDA AND UNITED STATES, CENSUS YEARS 1970-2000 AND 2005-2015



**CHART P-2: NATURAL INCREASE* IN POPULATION,
BY RACE, FLORIDA 2005-2015**

YEAR	TOTAL	WHITE	BLACK	OTHER
2005	55,919	16,079	29,953	9,552
2006	67,801	25,153	32,494	9,858
2007	71,412	27,292	33,308	10,396
2008	60,944	17,521	33,076	9,870
2009	51,537	9,996	32,220	8,714
2010	42,010	1,891	30,938	8,243
2011	40,381	171	30,470	9,210
2012	37,105	-3,177	30,121	9,578
2013	35,179	-3,948	29,305	9,029
2014	34,867	-4,483	29,163	9,256
2015	32,785	-5,563	28,145	9,242

*Resident Live Births minus Resident Deaths.

**GRAPH P-2: PERCENT DISTRIBUTION OF RACE-SPECIFIC POPULATION
BY AGE GROUPS, FLORIDA, 2015**

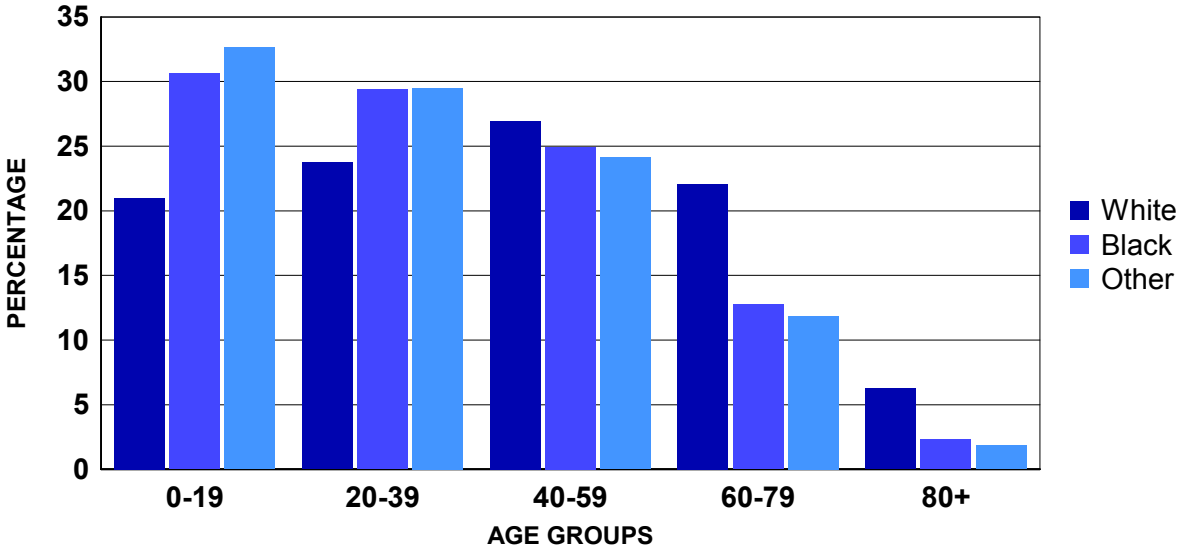


CHART P-3: RESIDENT MIDYEAR POPULATION ESTIMATES, BY AGE, RACE AND GENDER, FLORIDA, 2015

AGE GROUP	WHITE			BLACK			OTHER			
	TOTAL	TOTAL	MALE	FEMALE	TOTAL	MALE	FEMALE	TOTAL	MALE	FEMALE
TOTAL	19,860,805	15,480,568	7,606,549	7,874,019	3,343,371	1,613,069	1,730,302	1,036,866	498,366	538,500
<1 ¹	221,322	159,860	82,336	77,524	48,504	24,509	23,995	12,958	6,717	6,241
1-4 ²	891,687	608,598	309,786	298,812	204,580	104,776	99,804	78,509	39,847	38,662
5-9	1,141,762	798,580	407,818	390,762	255,187	129,797	125,390	87,995	44,457	43,538
10-14	1,157,969	819,102	419,141	399,961	255,583	129,126	126,457	83,284	41,557	41,727
15-19	1,198,941	863,677	442,311	421,366	259,621	130,835	128,786	75,643	37,955	37,688
20-24	1,319,476	956,217	493,696	462,521	281,293	142,805	138,488	81,966	41,606	40,360
25-29	1,266,572	937,104	483,242	453,862	252,327	125,637	126,690	77,141	38,393	38,748
30-34	1,225,369	915,151	465,229	449,922	234,668	113,035	121,633	75,550	36,258	39,292
35-39	1,150,553	864,790	436,750	428,040	214,419	101,569	112,850	71,344	33,788	37,556
40-44	1,197,470	916,319	459,160	457,159	212,820	100,250	112,570	68,331	31,593	36,738
45-49	1,263,040	990,590	496,014	494,576	209,760	99,778	109,982	62,690	29,285	33,405
50-54	1,413,620	1,137,472	563,489	573,983	214,185	101,312	112,873	61,963	28,551	33,412
55-59	1,381,101	1,126,923	547,823	579,100	196,904	91,851	105,053	57,274	26,100	31,174
60-64	1,246,066	1,040,242	491,808	548,434	158,597	72,752	85,845	47,227	21,176	26,051
65-69	1,137,481	981,676	460,833	520,843	120,468	54,015	66,453	35,337	15,786	19,551
70-74	906,263	797,382	370,716	426,666	84,817	36,765	48,052	24,064	10,757	13,307
75-79	679,401	601,181	275,234	325,947	61,807	26,162	35,645	16,413	7,095	9,318
80-84	540,747	487,774	216,488	271,286	42,062	16,405	25,657	10,911	4,465	6,446
85+	521,965	477,930	184,675	293,255	35,769	11,690	24,079	8,266	2,980	5,286

Source: The Florida Legislature, Office of Economic and Demographic Research, July 1 estimates or births and infant deaths from the Bureau of Vital Statistics.

1. The <1 age group is number of births minus infant deaths obtained when in-state births and infant deaths were finalized plus the number of out-of-state births minus infant deaths from the previous calendar year. When the estimate of individuals <1 in a county exceeds the 0-4 population estimate from the Office of Economic and Demographic Research for the county, then the county's total 0-4 population estimate is reallocated based on the proportion of individuals <1 in each race, ethnic, gender group in relation to the total number who are <1 in the county. A final adjustment may have been made to the <1 estimate to ensure that the sum of the <1, 1, 2, 3, and 4 age groups total to the county's 0-4 population estimate.

2. The 1-4 age group for each county is the Office of Economic and Demographic Research 0-4 age group estimate minus the <1 age group estimate described in the previous footnote. A final adjustment may have been made to the 1-4 estimate to ensure that the sum of the <1, 1, 2, 3, and 4 age groups total to the county's 0-4 population estimate.

**CHART P-4: RESIDENT MIDYEAR POPULATION ESTIMATES, BY RACE AND GENDER, FLORIDA,
CENSUS YEARS 1970-1990 AND 1996-2015**

YEAR	TOTAL	WHITE			BLACK			OTHER		
		TOTAL	MALE	FEMALE	TOTAL	MALE	FEMALE	TOTAL	MALE	FEMALE
1970	6,851,176	5,775,400	2,791,845	2,983,555	1,047,244	501,598	545,646	28,532	13,990	14,542
1980	9,840,317	8,389,968	4,031,868	4,358,100	1,366,808	649,110	717,698	83,541	39,070	44,471
1990	13,029,114	11,040,436	5,358,366	5,682,070	1,790,653	854,838	935,815	198,025	94,610	103,415
1996	14,701,293	12,205,330	5,957,258	6,248,072	2,191,834	1,053,895	1,137,939	304,129	144,321	159,808
1997	15,011,697	12,422,254	6,070,358	6,351,896	2,265,376	1,089,602	1,175,774	324,067	153,464	170,603
1998	15,309,968	12,633,341	6,177,496	6,455,845	2,334,494	1,122,859	1,211,635	342,133	162,015	180,118
1999	15,679,606	12,903,840	6,313,637	6,590,203	2,412,203	1,160,236	1,251,967	363,563	173,549	190,014
2000	16,074,896	13,200,518	6,461,066	6,739,452	2,487,562	1,196,463	1,291,099	386,816	186,108	200,708
2001	16,384,860	13,308,708	6,517,402	6,791,306	2,506,652	1,203,991	1,302,661	569,500	274,650	294,850
2002	16,718,033	13,530,669	6,628,652	6,902,017	2,577,689	1,238,065	1,339,624	609,675	294,751	314,924
2003	17,074,368	13,771,781	6,751,592	7,020,189	2,650,445	1,273,337	1,377,108	652,142	313,870	338,272
2004	17,476,489	14,047,501	6,893,166	7,154,335	2,732,636	1,312,932	1,419,704	696,352	334,256	362,096
2005	17,876,663	14,314,124	7,027,973	7,286,151	2,818,056	1,353,355	1,464,701	744,483	357,294	387,189
2006	18,237,596	14,539,520	7,142,191	7,397,329	2,904,545	1,395,616	1,508,929	793,531	381,434	412,097
2007	18,500,958	14,695,237	7,223,143	7,472,094	2,970,749	1,428,525	1,542,224	834,972	400,760	434,212
2008	18,636,837	14,747,636	7,244,354	7,503,282	3,019,761	1,452,221	1,567,540	869,440	416,260	453,180
2009	18,711,844	14,762,048	7,248,318	7,513,730	3,049,814	1,466,943	1,582,871	899,982	431,386	468,596
2010	18,820,278	14,815,082	7,276,743	7,538,339	3,083,154	1,483,295	1,599,859	922,042	442,190	479,852
2011	18,934,175	14,866,474	7,305,024	7,561,450	3,117,755	1,501,281	1,616,474	949,946	454,730	495,216
2012	19,042,458	14,930,936	7,331,419	7,599,517	3,150,349	1,517,653	1,632,696	961,173	460,322	500,851
2013	19,318,859	15,122,965	7,425,559	7,697,406	3,212,321	1,547,688	1,664,633	983,573	471,324	512,249
2014	19,548,031	15,286,521	7,504,627	7,781,894	3,263,817	1,572,592	1,691,225	997,693	478,350	519,343
2015	19,860,805	15,480,568	7,606,549	7,874,019	3,343,371	1,613,069	1,730,302	1,036,866	498,366	538,500

Source: The Florida Legislature, Office of Economic and Demographic Research

**CHART P-5: RESIDENT MIDYEAR POPULATION ESTIMATES, BY AGE GROUPS, FLORIDA,
CENSUS YEARS 1970-1990 AND 1996 - 2015**

YEAR	AGE GROUP											
	TOTAL	<1 ¹	1-4 ²	5-14	15-24	25-34	35-44	45-54	55-64	65-74	75-84	85+
1970	6,851,176	112,644	391,737	1,251,059	1,093,338	768,900	748,346	767,772	713,958	656,231	289,759	57,432
1980	9,840,317	129,893	448,565	1,310,351	1,630,632	1,438,555	1,051,361	994,915	1,131,187	1,067,585	517,689	119,584
1990	13,029,114	197,234	687,549	1,577,347	1,679,321	2,125,870	1,830,009	1,291,371	1,266,366	1,372,242	792,709	209,096
1996	14,701,293	187,933	738,827	1,925,408	1,736,529	2,118,987	2,251,266	1,733,377	1,314,581	1,470,070	939,150	285,165
1997	15,011,697	190,946	733,187	1,968,856	1,782,923	2,103,482	2,321,998	1,817,926	1,365,920	1,465,328	964,172	296,959
1998	15,309,968	194,149	729,556	2,009,851	1,833,426	2,078,343	2,382,246	1,893,110	1,438,765	1,456,934	984,061	309,527
1999	15,679,606	195,521	737,786	2,057,884	1,893,078	2,071,054	2,445,284	1,995,809	1,508,272	1,445,428	1,006,711	322,779
2000	16,074,896	202,607	752,066	2,094,766	1,961,818	2,086,402	2,488,959	2,090,243	1,579,582	1,455,587	1,029,871	332,995
2001	16,384,860	204,733	787,332	2,110,339	2,040,630	2,083,035	2,478,306	2,163,930	1,665,444	1,463,755	1,048,642	338,714
2002	16,718,033	204,486	781,008	2,120,022	2,086,329	2,071,620	2,490,536	2,267,322	1,758,361	1,489,751	1,085,544	363,054
2003	17,074,368	211,257	808,356	2,171,906	2,140,399	2,120,794	2,541,604	2,304,679	1,790,311	1,517,846	1,103,047	364,169
2004	17,476,489	220,922	840,464	2,223,491	2,291,411	2,114,627	2,515,128	2,419,314	1,925,093	1,433,804	1,071,348	420,887
2005	17,876,663	226,176	848,666	2,271,019	2,323,896	2,169,191	2,559,269	2,488,666	1,976,581	1,460,734	1,142,811	409,654
2006	18,237,596	236,579	857,820	2,296,310	2,366,202	2,221,896	2,544,341	2,551,058	2,067,667	1,513,436	1,149,747	432,540
2007	18,500,958	237,193	871,978	2,313,360	2,401,336	2,259,101	2,525,432	2,601,729	2,142,955	1,546,842	1,150,763	450,269
2008	18,636,837	230,660	905,284	2,306,432	2,410,214	2,272,113	2,481,650	2,627,769	2,198,837	1,565,961	1,148,391	489,526
2009	18,711,844	220,233	923,983	2,294,240	2,415,671	2,281,287	2,433,459	2,652,212	2,253,825	1,584,274	1,141,403	511,257
2010	18,820,278	224,098	834,824	2,202,794	2,437,270	2,272,695	2,421,253	2,744,741	2,368,230	1,760,445	1,114,335	439,593
2011	18,934,175	223,227	837,104	2,213,728	2,442,802	2,306,898	2,395,451	2,726,097	2,413,585	1,803,948	1,119,075	452,260
2012	19,042,458	209,035	868,895	2,226,029	2,459,267	2,352,723	2,367,106	2,693,194	2,447,516	1,837,950	1,118,494	462,249
2013	19,318,859	211,231	880,025	2,253,445	2,482,735	2,403,341	2,362,567	2,697,200	2,515,421	1,900,490	1,133,668	478,736
2014	19,548,031	217,026	886,618	2,279,012	2,504,635	2,448,462	2,345,727	2,699,859	2,574,936	1,951,625	1,142,703	497,428
2015	19,860,805	221,322	891,687	2,299,731	2,518,417	2,491,941	2,348,023	2,676,660	2,627,167	2,043,744	1,220,148	521,965

Source: The Florida Legislature, Office of Economic and Demographic Research, July 1 estimates or births and infant deaths from the Bureau of Vital Statistics.

1. The <1 age group is number of births minus infant deaths obtained when in-state births and infant deaths were finalized plus the number of out-of-state births minus infant deaths from the previous calendar year. When the estimate of individuals <1 in a county exceeds the 0-4 population estimate from the Office of Economic and Demographic Research for the county, then the county's total 0-4 population estimate is reallocated based on the proportion of individuals <1 in each race, ethnic, gender group in relation to the total number who are <1 in the county. A final adjustment may have been made to the <1 estimate to ensure that the sum of the <1, 1, 2, 3, and 4 age groups total to the county's 0-4 population estimate.

2. The 1-4 age group for each county is the Office of Economic and Demographic Research 0-4 age group estimate minus the <1 age group estimate described in the previous footnote. A final adjustment may have been made to the 1-4 estimate to ensure that the sum of the <1, 1, 2, 3, and 4 age groups total to the county's 0-4 population estimate.

TABLE P-1: RESIDENT MIDYEAR POPULATION ESTIMATES, BY RACE, ETHNICITY AND COUNTY, FLORIDA, 2015

	TOTAL	RACE			ETHNICITY	
		WHITE	BLACK	OTHER	NON-HISPANIC	HISPANIC
FLORIDA	19,860,805	15,480,568	3,343,371	1,036,866	15,006,422	4,854,383
ALACHUA	253,752	179,048	52,516	22,188	229,650	24,102
BAKER	27,484	22,878	3,956	650	26,854	630
BAY	172,973	142,842	19,821	10,310	162,818	10,155
BRADFORD	27,715	21,439	5,638	638	26,697	1,018
BREVARD	559,020	467,511	61,402	30,107	506,065	52,955
BROWARD	1,821,974	1,189,783	519,619	112,572	1,328,242	493,732
CALHOUN	14,595	11,928	2,045	622	13,744	851
CHARLOTTE	166,506	150,408	10,681	5,417	155,438	11,068
CITRUS	142,942	133,120	4,710	5,112	135,610	7,332
CLAY	202,859	166,033	22,853	13,973	184,238	18,621
COLLIER	345,014	309,773	24,678	10,563	248,099	96,915
COLUMBIA	68,524	53,660	12,459	2,405	64,729	3,795
MIAMI-DADE	2,651,195	2,064,044	503,933	83,218	885,572	1,765,623
DESOTO	34,420	28,706	4,633	1,081	22,887	11,533
DIXIE	16,697	14,880	1,432	385	16,059	638
DUVAL	901,215	554,750	277,323	69,142	820,055	81,160
ESCAMBIA	306,237	212,015	72,416	21,806	288,855	17,382
FLAGLER	102,738	84,858	12,879	5,001	92,183	10,555
FRANKLIN	11,842	9,945	1,611	286	11,244	598
GADSDEN	48,406	20,790	26,440	1,176	43,193	5,213
GILCHRIST	16,906	15,685	843	378	15,833	1,073
GLADES	12,989	10,551	1,538	900	9,800	3,189
GULF	16,491	13,276	2,874	341	15,716	775
HAMILTON	14,694	9,582	4,702	410	13,216	1,478
HARDEE	27,694	24,593	2,070	1,031	15,280	12,414
HENDRY	38,070	31,467	4,965	1,638	17,830	20,240
HERNANDO	178,020	160,296	11,142	6,582	157,321	20,699
HIGHLANDS	101,045	86,894	10,297	3,854	81,194	19,851
HILLSBOROUGH	1,334,793	1,006,507	238,142	90,144	975,083	359,710
HOLMES	20,090	18,095	1,265	730	19,541	549
INDIAN RIVER	143,743	125,036	14,029	4,678	125,218	18,525
JACKSON	50,337	35,167	13,610	1,560	47,772	2,565
JEFFERSON	14,676	9,136	5,255	285	13,985	691
LAFAYETTE	8,724	7,347	1,247	130	7,581	1,143
LAKE	319,259	269,120	34,863	15,276	273,216	46,043
LEE	674,907	587,435	61,952	25,520	532,547	142,360
LEON	284,740	178,416	90,311	16,013	266,776	17,964
LEVY	40,849	35,625	3,982	1,242	37,219	3,630
LIBERTY	8,719	6,947	1,515	257	8,164	555
MADISON	19,328	11,447	7,462	419	18,279	1,049
MANATEE	347,272	300,318	33,000	13,954	288,777	58,495
MARION	342,831	284,854	45,100	12,877	300,623	42,208
MARTIN	150,165	135,550	8,816	5,799	128,855	21,310
MONROE	74,094	66,678	4,814	2,602	57,470	16,624
NASSAU	77,218	69,731	5,243	2,244	73,763	3,455
OKALOOSA	192,676	158,156	19,340	15,180	177,697	14,979
OKEECHOBEE	40,084	35,288	3,389	1,407	29,604	10,480
ORANGE	1,265,036	872,023	283,948	109,065	892,134	372,902
OSCEOLA	308,780	247,139	40,959	20,682	156,938	151,842
PALM BEACH	1,381,632	1,063,412	249,759	68,461	1,085,704	295,928
PASCO	492,513	439,874	27,573	25,066	426,544	65,969
PINELLAS	942,832	779,337	108,012	55,483	850,715	92,117
POLK	637,493	509,442	99,691	28,360	503,659	133,834
PUTNAM	72,633	58,409	12,046	2,178	65,108	7,525
SAINT JOHNS	216,670	194,267	13,095	9,308	202,855	13,815
SAINT LUCIE	287,366	217,642	56,988	12,736	236,401	50,965
SANTA ROSA	164,206	143,648	10,482	10,076	154,745	9,461
SARASOTA	391,451	359,858	19,440	12,153	355,405	36,046
SEMINOLE	444,123	358,207	54,940	30,976	358,714	85,409
SUMTER	118,505	105,944	10,208	2,353	111,374	7,131
SUWANNEE	44,887	37,999	5,479	1,409	39,965	4,922
TAYLOR	23,000	17,550	4,712	738	22,150	850
UNION	15,910	11,994	3,603	313	15,045	865
VOLUSIA	508,744	431,133	57,082	20,529	445,813	62,931
WAKULLA	31,547	25,695	4,843	1,009	30,239	1,308
WALTON	61,665	54,775	4,009	2,881	57,829	3,836
WASHINGTON	25,290	20,612	3,691	987	24,493	797

