

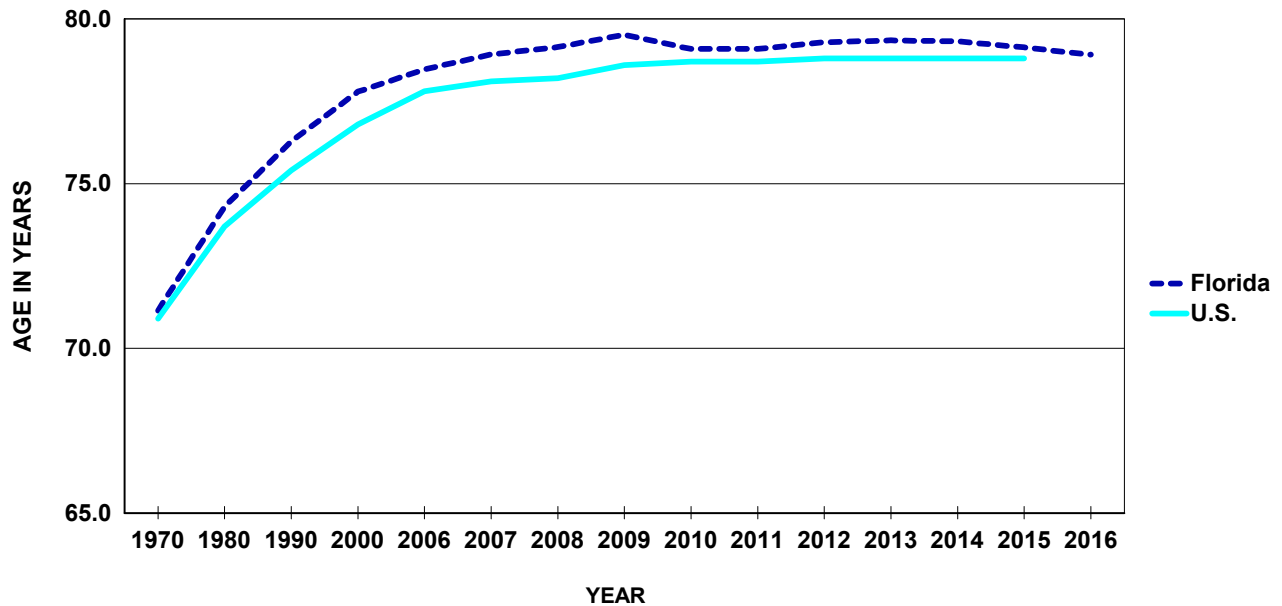
Population

CHART P-1: YEARS OF LIFE EXPECTANCY AT BIRTH, BY RACE, ETHNICITY AND GENDER, FOR FLORIDA RESIDENTS AND UNITED STATES TOTAL, CENSUS YEARS 1970-2000 AND 2006-2016

YEAR	FLORIDA							UNITED STATES			
	TOTAL	WHITE ¹		BLACK ¹		HISPANIC ²		TOTAL	WHITE ¹	BLACK ¹	HISPANIC ²
		MALE	FEMALE	MALE	FEMALE	MALE	FEMALE				
1970	71.1	68.5	77.0	59.1	68.7	NA	NA	70.9	71.1	NA	NA
1980	74.3	71.2	79.4	63.2	72.8	NA	NA	73.7	74.4	68.0	NA
1990	76.3	73.5	81.1	64.4	73.8	NA	NA	75.4	76.1	69.1	NA
2000	77.8	75.5	81.5	69.6	75.7	NA	NA	76.8	77.3	71.8	NA
2006	78.5	75.9	82.0	71.4	77.3	78.4	84.7	77.8	78.3	73.4	80.3
2007	78.9	76.4	82.4	71.7	78.2	78.6	85.4	78.1	78.5	73.8	80.7
2008	79.1	76.5	82.5	72.5	78.9	79.3	85.3	78.2	78.5	74.3	80.8
2009	79.5	76.9	82.8	73.1	79.1	79.7	86.0	78.6	78.8	74.7	81.1
2010	79.1	76.6	82.2	73.6	79.1	80.5	86.0	78.7	78.9	75.1	81.2
2011	79.1	76.6	82.3	73.4	79.2	79.6	85.3	78.7	79.0	75.3	81.4
2012	79.3	76.9	82.3	73.7	79.9	79.8	85.0	78.8	79.1	75.5	81.6
2013	79.3	77.1	82.4	73.9	80.0	80.2	85.2	78.8	79.1	75.5	81.6
2014	79.3	76.9	82.4	74.3	80.1	79.9	85.6	78.8	79.0	75.6	81.8
2015	79.1	76.6	82.4	73.8	80.2	79.7	85.6	78.8	NA	NA	NA
2016	78.9	76.3	82.1	73.9	79.8	79.5	85.5	NA	NA	NA	NA

1. Regardless of ethnicity.
2. Regardless of race

GRAPH P-1: YEARS OF LIFE EXPECTANCY AT BIRTH, FLORIDA AND UNITED STATES, CENSUS YEARS 1970-2000 AND 2006-2016



**CHART P-2: NATURAL INCREASE* IN POPULATION,
BY RACE, FLORIDA 2006-2016**

YEAR	TOTAL	WHITE	BLACK	OTHER
2006	67,801	25,153	32,494	9,858
2007	71,412	27,292	33,308	10,396
2008	60,944	17,521	33,076	9,870
2009	51,537	9,996	32,220	8,714
2010	42,010	1,891	30,938	8,243
2011	40,381	171	30,470	9,210
2012	37,105	-3,177	30,121	9,578
2013	35,180	-3,947	29,305	9,029
2014	34,867	-4,483	29,163	9,256
2015	32,785	-5,563	28,145	9,242
2016	27,782	-10,602	27,312	9,783

*Resident Live Births minus Resident Deaths.

**GRAPH P-2: PERCENT DISTRIBUTION OF RACE-SPECIFIC POPULATION
BY AGE GROUPS, FLORIDA, 2016**

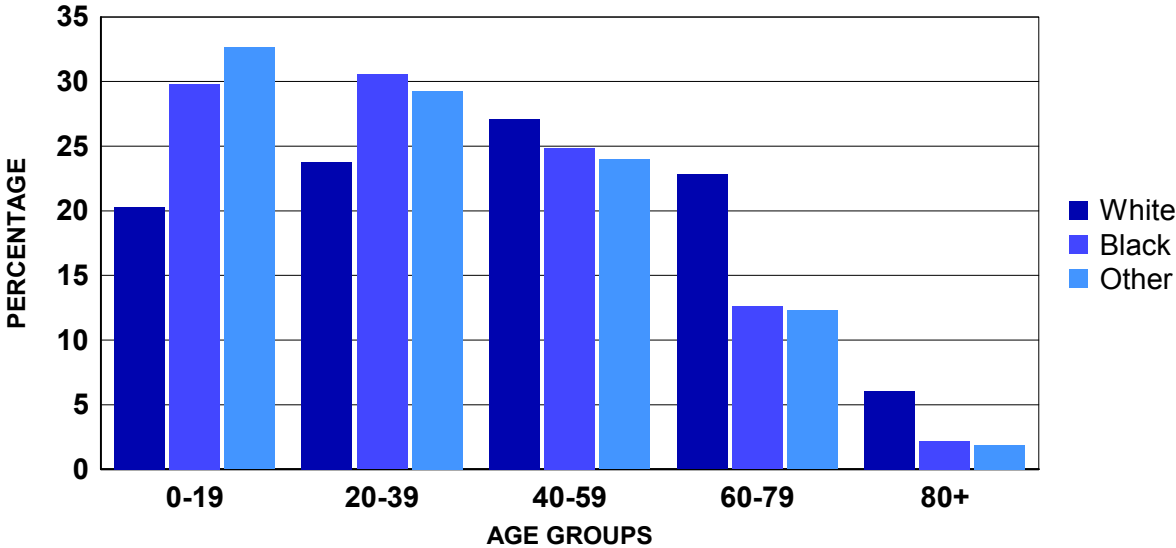


CHART P-3: RESIDENT MIDYEAR POPULATION ESTIMATES, BY AGE, RACE AND GENDER, FLORIDA, 2016

AGE GROUP	WHITE			BLACK			OTHER			
	TOTAL	TOTAL	MALE	FEMALE	TOTAL	MALE	FEMALE	TOTAL	MALE	FEMALE
TOTAL	20,231,092	15,722,428	7,719,778	8,002,650	3,408,734	1,641,187	1,767,547	1,099,930	526,199	573,731
<1 ¹	220,904	158,516	81,230	77,286	48,702	24,711	23,991	13,686	7,061	6,625
1-4 ²	889,872	601,923	308,641	293,282	205,736	104,474	101,262	82,213	41,900	40,313
5-9	1,130,984	781,568	399,706	381,862	254,528	129,188	125,340	94,888	48,139	46,749
10-14	1,141,142	804,469	412,829	391,640	250,030	126,346	123,684	86,643	43,324	43,319
15-19	1,179,821	841,218	433,596	407,622	257,356	130,836	126,520	81,247	41,130	40,117
20-24	1,295,161	918,214	472,333	445,881	292,874	148,078	144,796	84,073	42,274	41,799
25-29	1,344,918	985,441	506,948	478,493	276,415	136,896	139,519	83,062	41,074	41,988
30-34	1,263,268	937,649	477,306	460,343	246,115	118,312	127,803	79,504	37,725	41,779
35-39	1,198,054	897,603	453,085	444,518	225,129	107,271	117,858	75,322	35,037	40,285
40-44	1,245,173	953,413	478,654	474,759	216,892	101,699	115,193	74,868	34,901	39,967
45-49	1,306,983	1,026,950	512,972	513,978	211,555	100,751	110,804	68,478	31,609	36,869
50-54	1,435,666	1,153,962	568,911	585,051	217,940	102,669	115,271	63,764	29,105	34,659
55-59	1,381,950	1,124,102	541,346	582,756	201,060	93,387	107,673	56,788	25,241	31,547
60-64	1,263,704	1,054,057	494,318	559,739	160,923	72,971	87,952	48,724	21,267	27,457
65-69	1,210,320	1,046,918	491,344	555,574	123,108	54,858	68,250	40,294	17,578	22,716
70-74	964,833	852,736	398,049	454,687	84,624	37,032	47,592	27,473	12,251	15,222
75-79	711,967	633,264	292,087	341,177	60,401	25,191	35,210	18,302	8,426	9,876
80-84	506,294	456,800	204,669	252,131	38,637	14,871	23,766	10,857	4,587	6,270
85+	540,078	493,625	191,754	301,871	36,709	11,646	25,063	9,744	3,570	6,174

Source: The Florida Legislature, Office of Economic and Demographic Research, July 1 estimates or births and infant deaths from the Bureau of Vital Statistics.

1. The <1 age group is number of births minus infant deaths obtained when in-state births and infant deaths were finalized plus the number of out-of-state births minus infant deaths from the previous calendar year. When the estimate of individuals <1 in a county exceeds the 0-4 population estimate from the Office of Economic and Demographic Research for the county, then the county's total 0-4 population estimate is reallocated based on the proportion of individuals <1 in each race, ethnic, gender group in relation to the total number who are <1 in the county. A final adjustment may have been made to the <1 estimate to ensure that the sum of the <1, 1, 2, 3, and 4 age groups total to the county's 0-4 population estimate.

2. The 1-4 age group for each county is the Office of Economic and Demographic Research 0-4 age group estimate minus the <1 age group estimate described in the previous footnote. A final adjustment may have been made to the 1-4 estimate to ensure that the sum of the <1, 1, 2, 3, and 4 age groups total to the county's 0-4 population estimate.

**CHART P-4: RESIDENT MIDYEAR POPULATION ESTIMATES, BY RACE AND GENDER, FLORIDA,
CENSUS YEARS 1970-1990 AND 1997-2016**

YEAR	TOTAL	WHITE			BLACK			OTHER		
		TOTAL	MALE	FEMALE	TOTAL	MALE	FEMALE	TOTAL	MALE	FEMALE
1970	6,851,176	5,775,400	2,791,845	2,983,555	1,047,244	501,598	545,646	28,532	13,990	14,542
1980	9,840,317	8,389,968	4,031,868	4,358,100	1,366,808	649,110	717,698	83,541	39,070	44,471
1990	13,029,114	11,040,436	5,358,366	5,682,070	1,790,653	854,838	935,815	198,025	94,610	103,415
1997	15,011,697	12,422,254	6,070,358	6,351,896	2,265,376	1,089,602	1,175,774	324,067	153,464	170,603
1998	15,309,968	12,633,341	6,177,496	6,455,845	2,334,494	1,122,859	1,211,635	342,133	162,015	180,118
1999	15,679,606	12,903,840	6,313,637	6,590,203	2,412,203	1,160,236	1,251,967	363,563	173,549	190,014
2000	16,074,896	13,200,518	6,461,066	6,739,452	2,487,562	1,196,463	1,291,099	386,816	186,108	200,708
2001	16,384,860	13,308,708	6,517,402	6,791,306	2,506,652	1,203,991	1,302,661	569,500	274,650	294,850
2002	16,718,033	13,530,669	6,628,652	6,902,017	2,577,689	1,238,065	1,339,624	609,675	294,751	314,924
2003	17,074,368	13,771,781	6,751,592	7,020,189	2,650,445	1,273,337	1,377,108	652,142	313,870	338,272
2004	17,476,489	14,047,501	6,893,166	7,154,335	2,732,636	1,312,932	1,419,704	696,352	334,256	362,096
2005	17,876,663	14,314,124	7,027,973	7,286,151	2,818,056	1,353,355	1,464,701	744,483	357,294	387,189
2006	18,237,596	14,539,520	7,142,191	7,397,329	2,904,545	1,395,616	1,508,929	793,531	381,434	412,097
2007	18,500,958	14,695,237	7,223,143	7,472,094	2,970,749	1,428,525	1,542,224	834,972	400,760	434,212
2008	18,636,837	14,747,636	7,244,354	7,503,282	3,019,761	1,452,221	1,567,540	869,440	416,260	453,180
2009	18,711,844	14,762,048	7,248,318	7,513,730	3,049,814	1,466,943	1,582,871	899,982	431,386	468,596
2010	18,820,278	14,815,082	7,276,743	7,538,339	3,083,154	1,483,295	1,599,859	922,042	442,190	479,852
2011	18,941,742	14,910,321	7,321,404	7,588,917	3,106,365	1,494,849	1,611,516	925,056	442,904	482,152
2012	19,118,938	14,997,292	7,364,269	7,633,023	3,165,062	1,524,688	1,640,374	956,584	457,994	498,590
2013	19,314,396	15,106,653	7,418,152	7,688,501	3,219,386	1,549,521	1,669,865	988,357	473,154	515,203
2014	19,579,871	15,278,924	7,504,007	7,774,917	3,278,527	1,578,356	1,700,171	1,022,420	489,472	532,948
2015	19,897,762	15,492,935	7,608,260	7,884,675	3,344,939	1,610,114	1,734,825	1,059,888	507,150	552,738
2016	20,231,092	15,722,428	7,719,778	8,002,650	3,408,734	1,641,187	1,767,547	1,099,930	526,199	573,731

Source: The Florida Legislature, Office of Economic and Demographic Research

**CHART P-5: RESIDENT MIDYEAR POPULATION ESTIMATES, BY AGE GROUPS, FLORIDA,
CENSUS YEARS 1970-1990 AND 1997 - 2016**

YEAR	AGE GROUP											
	TOTAL	<1 ¹	1-4 ²	5-14	15-24	25-34	35-44	45-54	55-64	65-74	75-84	85+
1970	6,851,176	112,644	391,737	1,251,059	1,093,338	768,900	748,346	767,772	713,958	656,231	289,759	57,432
1980	9,840,317	129,893	448,565	1,310,351	1,630,632	1,438,555	1,051,361	994,915	1,131,187	1,067,585	517,689	119,584
1990	13,029,114	197,234	687,549	1,577,347	1,679,321	2,125,870	1,830,009	1,291,371	1,266,366	1,372,242	792,709	209,096
1997	15,011,697	190,946	733,187	1,968,856	1,782,923	2,103,482	2,321,998	1,817,926	1,365,920	1,465,328	964,172	296,959
1998	15,309,968	194,149	729,556	2,009,851	1,833,426	2,078,343	2,382,246	1,893,110	1,438,765	1,456,934	984,061	309,527
1999	15,679,606	195,521	737,786	2,057,884	1,893,078	2,071,054	2,445,284	1,995,809	1,508,272	1,445,428	1,006,711	322,779
2000	16,074,896	202,607	752,066	2,094,766	1,961,818	2,086,402	2,488,959	2,090,243	1,579,582	1,455,587	1,029,871	332,995
2001	16,384,860	204,733	787,332	2,110,339	2,040,630	2,083,035	2,478,306	2,163,930	1,665,444	1,463,755	1,048,642	338,714
2002	16,718,033	204,486	781,008	2,120,022	2,086,329	2,071,620	2,490,536	2,267,322	1,758,361	1,489,751	1,085,544	363,054
2003	17,074,368	211,257	808,356	2,171,906	2,140,399	2,120,794	2,541,604	2,304,679	1,790,311	1,517,846	1,103,047	364,169
2004	17,476,489	220,922	840,464	2,223,491	2,291,411	2,114,627	2,515,128	2,419,314	1,925,093	1,433,804	1,071,348	420,887
2005	17,876,663	226,176	848,666	2,271,019	2,323,896	2,169,191	2,559,269	2,488,666	1,976,581	1,460,734	1,142,811	409,654
2006	18,237,596	236,579	857,820	2,296,310	2,366,202	2,221,896	2,544,341	2,551,058	2,067,667	1,513,436	1,149,747	432,540
2007	18,500,958	237,193	871,978	2,313,360	2,401,336	2,259,101	2,525,432	2,601,729	2,142,955	1,546,842	1,150,763	450,269
2008	18,636,837	230,660	905,284	2,306,432	2,410,214	2,272,113	2,481,650	2,627,769	2,198,837	1,565,961	1,148,391	489,526
2009	18,711,844	220,233	923,983	2,294,240	2,415,671	2,281,287	2,433,459	2,652,212	2,253,825	1,584,274	1,141,403	511,257
2010	18,820,278	224,098	834,824	2,202,794	2,437,270	2,272,695	2,421,253	2,744,741	2,368,230	1,760,445	1,114,335	439,593
2011	18,941,742	210,081	866,725	2,221,303	2,473,323	2,312,891	2,437,668	2,758,848	2,364,888	1,748,471	1,106,676	440,868
2012	19,118,938	209,568	864,252	2,220,419	2,483,701	2,358,439	2,412,827	2,761,736	2,440,747	1,781,802	1,118,070	467,377
2013	19,314,396	211,853	861,000	2,230,250	2,483,104	2,405,697	2,403,414	2,745,448	2,460,721	1,892,949	1,133,537	486,423
2014	19,579,871	217,037	856,486	2,247,663	2,490,275	2,462,027	2,410,595	2,737,635	2,508,083	1,987,603	1,156,350	506,117
2015	19,897,762	221,333	868,873	2,260,954	2,487,272	2,532,191	2,424,296	2,736,706	2,572,268	2,082,092	1,187,221	524,556
2016	20,231,092	220,904	889,872	2,272,126	2,474,982	2,608,186	2,443,227	2,742,649	2,645,654	2,175,153	1,218,261	540,078

Source: The Florida Legislature, Office of Economic and Demographic Research, July 1 estimates or births and infant deaths from the Bureau of Vital Statistics.

1. The <1 age group is number of births minus infant deaths obtained when in-state births and infant deaths were finalized plus the number of out-of-state births minus infant deaths from the previous calendar year. When the estimate of individuals <1 in a county exceeds the 0-4 population estimate from the Office of Economic and Demographic Research for the county, then the county's total 0-4 population estimate is reallocated based on the proportion of individuals <1 in each race, ethnic, gender group in relation to the total number who are <1 in the county. A final adjustment may have been made to the <1 estimate to ensure that the sum of the <1, 1, 2, 3, and 4 age groups total to the county's 0-4 population estimate.

2. The 1-4 age group for each county is the Office of Economic and Demographic Research 0-4 age group estimate minus the <1 age group estimate described in the previous footnote. A final adjustment may have been made to the 1-4 estimate to ensure that the sum of the <1, 1, 2, 3, and 4 age groups total to the county's 0-4 population estimate.

TABLE P-1: RESIDENT MIDYEAR POPULATION ESTIMATES, BY RACE, ETHNICITY AND COUNTY, FLORIDA, 2016

	TOTAL	RACE			ETHNICITY	
		WHITE	BLACK	OTHER	NON-HISPANIC	HISPANIC
FLORIDA	20,231,092	15,722,428	3,408,734	1,099,930	15,268,108	4,962,984
ALACHUA	257,478	181,109	53,131	23,238	233,939	23,539
BAKER	26,967	22,604	3,596	767	26,328	639
BAY	176,637	145,470	19,888	11,279	165,997	10,640
BRADFORD	27,498	21,465	5,261	772	26,447	1,051
BREVARD	570,496	478,049	60,621	31,826	516,038	54,458
BROWARD	1,860,979	1,194,643	548,037	118,299	1,337,951	523,028
CALHOUN	14,594	12,006	1,936	652	13,776	818
CHARLOTTE	171,219	154,906	10,449	5,864	159,706	11,513
CITRUS	143,458	133,959	4,311	5,188	135,960	7,498
CLAY	206,387	169,926	22,515	13,946	187,223	19,164
COLLIER	351,768	315,140	25,618	11,010	257,370	94,398
COLUMBIA	68,687	53,723	12,557	2,407	64,752	3,935
MIAMI-DADE	2,712,144	2,118,462	507,868	85,814	890,529	1,821,615
DESOTO	35,215	29,484	4,533	1,198	24,305	10,910
DIXIE	16,844	14,860	1,574	410	16,197	647
DUVAL	927,903	571,860	280,519	75,524	845,360	82,543
ESCAMBIA	310,642	216,166	71,346	23,130	293,556	17,086
FLAGLER	103,584	86,980	11,583	5,021	93,184	10,400
FRANKLIN	11,937	9,889	1,680	368	11,315	622
GADSDEN	48,527	20,114	27,279	1,134	43,705	4,822
GILCHRIST	16,862	15,541	856	465	15,948	914
GLADES	13,101	10,300	1,827	974	10,323	2,778
GULF	16,718	13,128	3,096	494	15,872	846
HAMILTON	14,666	9,125	4,993	548	13,330	1,336
HARDEE	27,643	24,456	2,098	1,089	15,723	11,920
HENDRY	38,436	31,671	4,984	1,781	18,559	19,877
HERNANDO	180,213	163,373	10,050	6,790	158,886	21,327
HIGHLANDS	101,727	87,093	10,612	4,022	82,782	18,945
HILLSBOROUGH	1,359,850	1,021,452	239,193	99,205	991,673	368,177
HOLMES	20,037	18,015	1,282	740	19,509	528
INDIAN RIVER	147,163	128,257	13,763	5,143	129,615	17,548
JACKSON	50,311	35,105	13,470	1,736	47,980	2,331
JEFFERSON	14,501	9,021	5,133	347	13,919	582
LAFAYETTE	8,620	7,109	1,296	215	7,586	1,034
LAKE	325,887	275,081	34,773	16,033	279,493	46,394
LEE	684,465	595,842	61,755	26,868	547,653	136,812
LEON	288,495	179,819	91,075	17,601	270,947	17,548
LEVY	40,599	35,593	3,740	1,266	37,242	3,357
LIBERTY	8,754	6,799	1,679	276	8,155	599
MADISON	19,252	11,306	7,487	459	18,299	953
MANATEE	359,486	310,473	33,153	15,860	302,308	57,178
MARION	346,956	286,927	45,943	14,086	304,690	42,266
MARTIN	151,081	136,903	8,460	5,718	131,481	19,600
MONROE	76,461	68,479	5,213	2,769	59,096	17,365
NASSAU	78,174	71,014	4,786	2,374	75,152	3,022
OKALOOSA	193,247	158,040	19,418	15,789	176,840	16,407
OKEECHOBEE	40,983	35,864	3,528	1,591	30,628	10,355
ORANGE	1,287,703	882,266	291,323	114,114	903,111	384,592
OSCEOLA	326,342	260,747	44,011	21,584	158,952	167,390
PALM BEACH	1,395,117	1,055,657	267,713	71,747	1,101,205	293,912
PASCO	497,991	444,891	28,242	24,858	429,111	68,880
PINELLAS	956,302	794,820	104,205	57,277	869,650	86,652
POLK	650,552	517,674	102,396	30,482	518,418	132,134
PUTNAM	73,004	58,744	11,997	2,263	65,988	7,016
SAINT JOHNS	222,006	198,659	12,124	11,223	207,919	14,087
SAINT LUCIE	294,144	220,565	59,853	13,726	241,471	52,673
SANTA ROSA	168,026	146,796	10,876	10,354	159,210	8,816
SARASOTA	401,316	367,934	19,518	13,864	366,418	34,898
SEMINOLE	450,706	362,330	55,246	33,130	361,571	89,135
SUMTER	119,433	107,251	9,414	2,768	112,786	6,647
SUWANNEE	44,340	37,106	5,974	1,260	40,461	3,879
TAYLOR	22,400	17,005	4,585	810	21,481	919
UNION	15,873	11,841	3,618	414	14,991	882
VOLUSIA	519,037	438,384	57,891	22,762	453,679	65,358
WAKULLA	31,706	26,093	4,550	1,063	30,545	1,161
WALTON	63,562	57,060	3,437	3,065	59,816	3,746
WASHINGTON	24,880	20,004	3,796	1,080	23,998	882

