

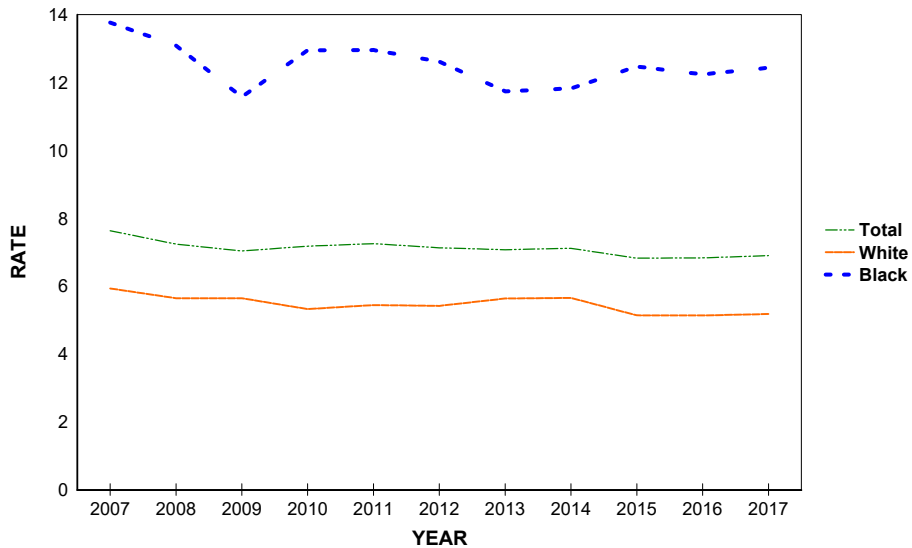
Fetal and Infant Deaths

CHART F-1: RESIDENT FETAL DEATHS AND RATES PER 1,000 LIVE BIRTHS AND FETAL DEATHS, BY RACE*, FLORIDA AND UNITED STATES, CENSUS YEARS 1970-2000 AND 2007-2017

YEAR	NUMBER OF FETAL DEATHS - FL				RATES PER 1,000 - FL			RATES - U.S.		
	TOTAL	WHITE	BLACK	OTHER	TOTAL	WHITE	BLACK	TOTAL	WHITE	BLACK
1970	1,708	1,034	608	7	14.6	11.8	21.6	14.0	12.3	23.2
1980	1,356	848	476	15	10.2	8.6	14.2	9.1	8.1	14.7
1990	1,811	1,071	695	25	9.0	7.1	14.8	7.5	6.4	13.3
2000	1,675	954	667	37	8.1	6.3	13.9	6.6	5.6	12.4
2007	1,840	1,042	720	72	7.6	5.9	13.8	6.1	NA	NA
2008	1,688	951	681	44	7.2	5.6	13.1	6.2	NA	NA
2009	1,569	904	592	63	7.0	5.6	11.6	6.0	NA	NA
2010	1,551	822	645	79	7.2	5.3	12.9	6.0	NA	NA
2011	1,558	832	641	76	7.3	5.4	13.0	6.1	NA	NA
2012	1,530	822	626	77	7.1	5.4	12.6	6.1	NA	NA
2013	1,533	869	579	81	7.1	5.6	11.7	6.0	NA	NA
2014	1,576	893	587	90	7.1	5.7	11.8	NA	NA	NA
2015	1,541	831	620	83	6.8	5.1	12.5	NA	NA	NA
2016	1,548	828	612	94	6.8	5.1	12.2	NA	NA	NA
2017	1,553	823	627	83	6.9	5.2	12.4	NA	NA	NA

*Fetal deaths and live births based on the race of the mother.

GRAPH F-1: RESIDENT FETAL DEATH RATES PER 1,000 LIVE BIRTHS AND FETAL DEATHS, BY RACE OF MOTHER, FLORIDA, 2007-2017



**CHART F-2: RESIDENT NEONATAL DEATHS AND RATES PER 1,000 LIVE BIRTHS,
BY RACE, FLORIDA AND UNITED STATES,
CENSUS YEARS 1970-2000 AND 2007-2017**

YEAR	NUMBER OF NEONATAL DEATHS - FL ¹				RATES - FL ¹			RATES - U.S.		
	TOTAL	WHITE	BLACK	OTHER	TOTAL	WHITE	BLACK	TOTAL	WHITE	BLACK
1970	1,847	1,198	636	11	16.0	13.8	23.1	15.1	13.8	22.8
1980	1,282	791	487	3	9.7	8.1	14.7	8.5	7.4	14.6
1990	1,227	742	476	8	6.2	5.0	10.3	5.9	4.8	11.6
2000	925	526	384	13	4.5	3.5	8.1	4.6	3.8	9.4
2007	1,062	573	422	65	4.4	3.3	8.2	4.4	3.7	8.7
2008	1,061	592	402	65	4.6	3.5	7.8	4.3	3.6	8.2
2009	996	513	438	42	4.5	3.2	8.7	4.2	3.5	8.2
2010	929	497	385	46	4.3	3.2	7.8	4.1	3.5	7.5
2011	915	465	401	46	4.3	3.1	8.2	4.1	3.5	7.5
2012	826	457	321	47	3.9	3.0	6.6	4.0	3.5	7.3
2013	859	458	341	57	4.0	3.0	7.0	4.0	3.5	7.4
2014	893	463	363	62	4.1	2.9	7.4	3.9	3.4	7.3
2015	984	499	394	84	4.4	3.1	8.0	3.9	NA	NA
2016	929	469	384	69	4.1	2.9	7.8	NA	NA	NA
2017	900	473	347	74	4.0	3.0	7.0	NA	NA	NA

1. Neonatal deaths based on race of decedent, live births based on race of mother.

**GRAPH F-2: RESIDENT NEONATAL DEATH RATES PER 1,000 LIVE BIRTHS, BY RACE,
FLORIDA AND UNITED STATES, 2007-2017**

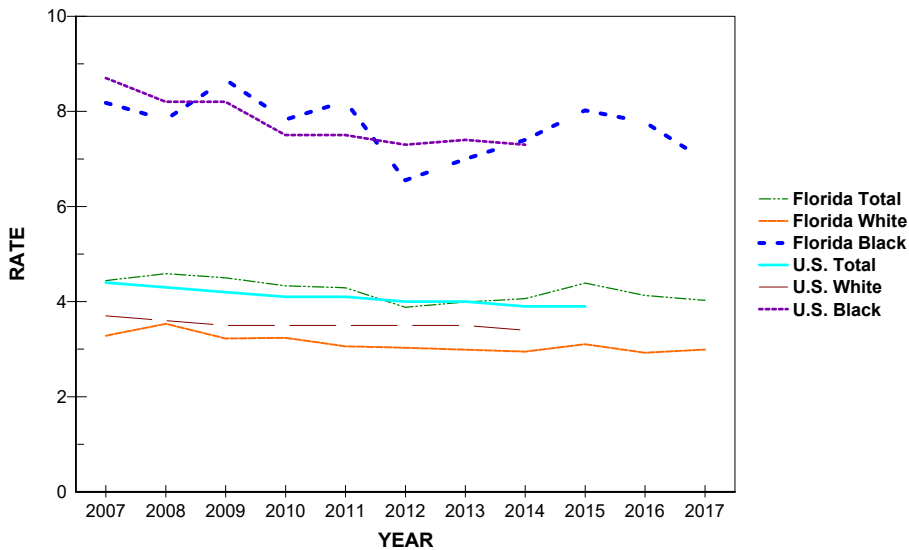


CHART F-3: RESIDENT INFANT DEATHS AND RATES PER 1,000 LIVE BIRTHS, BY RACE, FLORIDA AND UNITED STATES, CENSUS YEARS 1970-2000 AND 2007-2017

YEAR	NUMBER OF INFANT DEATHS - FL ¹				RATES - FL ¹			RATE - U.S.		
	TOTAL	WHITE	BLACK	OTHER	TOTAL	WHITE	BLACK	TOTAL	WHITE	BLACK
1970	2,469	1,538	918	11	21.4	17.7	33.3	20.0	17.8	32.7
1980	1,918	1,137	774	6	14.6	11.7	23.4	12.6	10.9	22.1
1990	1,912	1,123	775	12	9.6	7.5	16.7	9.2	7.6	18.0
2000	1,423	810	594	17	7.0	5.4	12.6	6.9	5.7	14.1
2007	1,689	906	689	92	7.1	5.2	13.4	6.8	5.6	13.2
2008	1,667	914	661	90	7.2	5.5	12.9	6.6	5.5	12.7
2009	1,525	780	667	75	6.9	4.9	13.2	6.4	5.3	12.6
2010	1,400	750	580	69	6.5	4.9	11.8	6.2	5.2	11.6
2011	1,372	698	584	86	6.4	4.6	12.0	6.1	5.1	11.5
2012	1,285	687	523	73	6.0	4.6	10.7	6.0	5.1	11.2
2013	1,318	707	517	90	6.1	4.6	10.6	6.0	5.1	11.2
2014	1,327	688	538	95	6.0	4.4	11.0	5.8	4.9	11.0
2015	1,400	711	558	124	6.2	4.4	11.4	5.9	NA	NA
2016	1,380	694	575	102	6.1	4.3	11.6	NA	NA	NA
2017	1,355	696	536	115	6.1	4.4	10.8	NA	NA	NA

1. Infant deaths based on race of decedent, live births based on race of mother.

GRAPH F-3: RESIDENT INFANT DEATH RATES PER 1,000 LIVE BIRTHS, BY RACE, FLORIDA AND UNITED STATES, 2007-2017

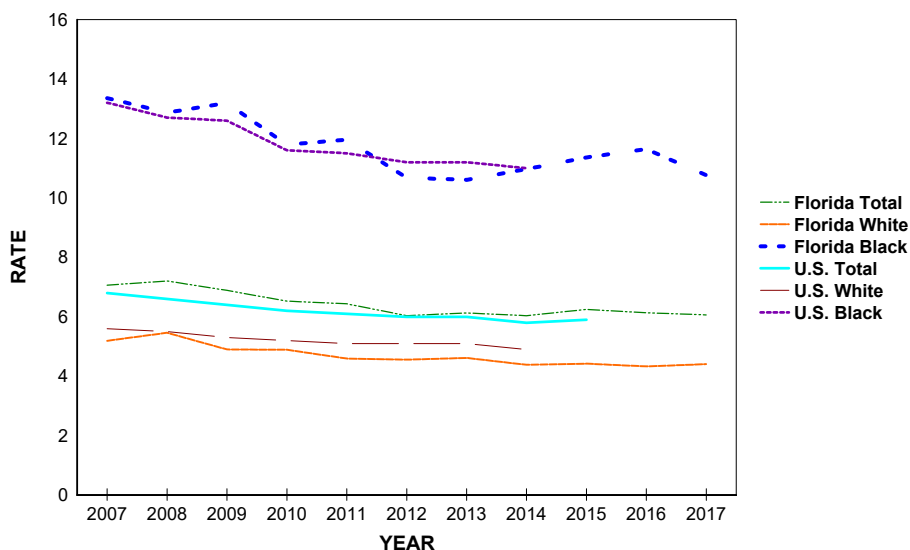


TABLE F-1: RESIDENT AND RECORDED FETAL DEATHS (OF 20 OR MORE WEEKS GESTATION) AND RATES PER 1,000 LIVE BIRTHS AND FETAL DEATHS, BY RACE OF MOTHER, BY COUNTY, FLORIDA, 2017

	RESIDENT FETAL DEATHS					RATES		
	NUMBERS					TOTAL	WHITE	BLACK
	TOTAL	WHITE	BLACK	OTHER	UNK			
FLORIDA	1553	823	627	83	20	6.9	5.2	12.4
ALACHUA	18	7	11	0	0	6.3	4.2	12.3
BAKER	2	0	0	2	0	6.3	0.0	0.0
BAY	18	11	6	1	0	7.7	6.3	17.3
BRADFORD	3	3	0	0	0	10.5	13.4	0.0
BREVARD	36	32	3	0	1	6.9	7.9	3.9
BROWARD	200	62	121	12	5	8.9	5.0	14.1
CALHOUN	2	2	0	0	0	15.7	17.2	0.0
CHARLOTTE	1	1	0	0	0	0.9	1.1	0.0
CITRUS	12	12	0	0	0	10.7	11.7	0.0
CLAY	14	10	3	1	0	6.3	5.7	9.7
COLLIER	21	13	5	3	0	6.6	5.0	11.4
COLUMBIA	6	3	3	0	0	7.5	4.8	19.2
MIAMI-DADE	211	107	93	8	3	6.6	4.4	14.5
DESOTO	5	5	0	0	0	12.8	14.7	0.0
DIXIE	1	1	0	0	0	7.1	8.1	0.0
DUVAL	96	34	59	2	1	7.2	4.7	12.4
ESCAMBIA	26	8	14	4	0	6.5	3.3	11.4
FLAGLER	2	1	1	0	0	2.5	1.5	9.3
FRANKLIN	3	2	1	0	0	25.6	19.8	83.3
GADSDEN	7	3	4	0	0	12.4	14.9	11.3
GILCHRIST	0	0	0	0	0	0.0	0.0	0.0
GLADES	1	1	0	0	0	16.1	19.6	0.0
GULF	1	1	0	0	0	8.1	9.6	0.0
HAMILTON	1	1	0	0	0	6.2	9.9	0.0
HARDEE	2	1	1	0	0	5.6	3.2	38.5
HENDRY	1	0	1	0	0	1.7	0.0	13.9
HERNANDO	6	6	0	0	0	3.9	4.5	0.0
HIGHLANDS	7	2	5	0	0	7.8	2.9	33.1
HILLSBOROUGH	106	56	44	6	0	6.0	4.5	11.3
HOLMES	1	0	0	1	0	4.4	0.0	0.0
INDIAN RIVER	7	5	2	0	0	5.5	6.0	8.6
JACKSON	1	1	0	0	0	1.9	2.9	0.0
JEFFERSON	4	1	2	1	0	27.4	11.9	33.9
LAFAYETTE	0	0	0	0	0	0.0	0.0	0.0
LAKE	27	16	7	4	0	8.2	6.2	14.1
LEE	53	32	15	5	1	7.9	5.8	15.0
LEON	14	3	10	1	0	4.5	1.9	7.2
LEVY	2	1	1	0	0	4.8	2.9	20.0
LIBERTY	1	1	0	0	0	11.5	12.5	0.0
MADISON	3	1	2	0	0	16.9	10.3	25.3
MANATEE	22	13	8	0	1	6.3	4.9	17.9
MARION	16	10	6	0	0	4.6	3.8	8.8
MARTIN	7	4	3	0	0	5.5	4.1	32.6
MONROE	7	5	2	0	0	9.5	8.7	16.7
NASSAU	4	4	0	0	0	4.8	5.3	0.0
OKALOOSA	27	11	11	5	0	10.0	5.1	39.7
OKEECHOBEE	5	3	1	1	0	9.2	6.3	33.3
ORANGE	119	59	51	9	0	7.0	5.4	11.3
OSCEOLA	29	21	4	3	1	6.6	5.9	9.2
PALM BEACH	96	42	47	5	2	6.3	4.3	10.8
PASCO	47	35	9	1	2	9.1	7.8	22.1
PINELLAS	55	41	12	2	0	6.6	6.9	8.0
POLK	55	36	19	0	0	7.0	6.1	12.0
PUTNAM	10	6	4	0	0	11.7	10.0	18.9
SAINT JOHNS	11	8	2	0	1	5.1	4.4	12.7
SAINT LUCIE	13	8	4	0	1	4.3	4.0	4.9
SANTA ROSA	6	5	1	0	0	3.1	2.9	11.0
SARASOTA	20	15	4	1	0	7.0	6.3	15.5
SEMINOLE	25	12	8	5	0	5.2	3.4	10.5
SUMTER	3	2	1	0	0	6.5	5.3	12.5
SUWANNEE	5	3	2	0	0	11.6	8.6	33.9
TAYLOR	1	1	0	0	0	4.9	6.3	0.0
UNION	2	1	1	0	0	14.2	8.3	52.6
VOLUSIA	30	18	11	0	1	6.0	4.6	13.2
WAKULLA	4	4	0	0	0	12.5	14.1	0.0
WALTON	9	8	1	0	0	11.5	11.2	25.6
WASHINGTON	3	2	1	0	0	11.9	10.4	24.4

TABLE F-1 (Cont.): RESIDENT AND RECORDED FETAL DEATHS (OF 20 OR MORE WEEKS GESTATION) AND RATES PER 1,000 LIVE BIRTHS AND FETAL DEATHS, BY RACE OF MOTHER, BY COUNTY, FLORIDA, 2017

	RECORDED FETAL DEATHS					RATES		
	NUMBERS					TOTAL	WHITE	BLACK
	TOTAL	WHITE	BLACK	OTHER	UNK			
FLORIDA	1590	845	634	87	24	7.1	5.3	12.6
ALACHUA	43	26	17	0	0	7.1	6.1	12.3
BAKER	0	0	0	0	0	0.0	0.0	0.0
BAY	26	16	8	2	0	9.0	7.3	19.0
BRADFORD	0	0	0	0	0	0.0	0.0	0.0
BREVARD	27	24	2	0	1	5.4	6.2	2.8
BROWARD	214	63	133	13	5	8.8	4.7	14.2
CALHOUN	0	0	0	0	0	0.0	0.0	----
CHARLOTTE	3	3	0	0	0	3.0	3.6	0.0
CITRUS	10	9	1	0	0	11.6	11.4	31.3
CLAY	20	9	8	2	1	7.7	4.9	13.6
COLLIER	21	12	5	4	0	6.1	4.3	11.7
COLUMBIA	4	1	3	0	0	6.5	2.4	16.9
MIAMI-DADE	201	110	80	8	3	6.9	4.9	14.9
DESOTO	4	4	0	0	0	14.9	16.8	0.0
DIXIE	0	0	0	0	0	0.0	0.0	----
DUVAL	104	38	59	4	3	7.0	4.3	12.8
ESCAMBIA	36	15	16	5	0	6.2	3.7	12.0
FLAGLER	0	0	0	0	0	0.0	0.0	0.0
FRANKLIN	0	0	0	0	0	0.0	----	0.0
GADSDEN	0	0	0	0	0	0.0	0.0	----
GILCHRIST	0	0	0	0	0	0.0	0.0	----
GLADES	0	0	0	0	0	----	----	----
GULF	0	0	0	0	0	----	----	----
HAMILTON	0	0	0	0	0	----	----	----
HARDEE	0	0	0	0	0	0.0	0.0	----
HENDRY	1	0	1	0	0	142.9	0.0	500.0
HERNANDO	14	14	0	0	0	8.1	9.3	0.0
HIGHLANDS	7	3	4	0	0	6.1	3.2	24.7
HILLSBOROUGH	146	88	49	8	1	7.0	5.9	11.1
HOLMES	0	0	0	0	0	----	----	----
INDIAN RIVER	8	6	2	0	0	7.5	9.1	10.3
JACKSON	3	2	1	0	0	7.2	7.3	8.5
JEFFERSON	1	0	1	0	0	1,000.0	----	1,000.0
LAFAYETTE	0	0	0	0	0	0.0	0.0	----
LAKE	16	10	5	1	0	6.1	5.0	10.9
LEE	52	33	13	5	1	7.6	5.8	12.8
LEON	33	14	17	2	0	6.9	5.4	8.6
LEVY	0	0	0	0	0	0.0	0.0	0.0
LIBERTY	0	0	0	0	0	----	----	----
MADISON	0	0	0	0	0	0.0	0.0	----
MANATEE	14	9	5	0	0	5.6	4.9	16.6
MARION	11	8	3	0	0	4.4	4.3	6.1
MARTIN	9	6	3	0	0	9.9	9.4	38.0
MONROE	3	1	2	0	0	6.4	2.9	22.0
NASSAU	3	3	0	0	0	5.5	6.5	0.0
OKALOOSA	22	9	10	3	0	10.0	5.1	43.7
OKEECHOBEE	1	1	0	0	0	166.7	200.0	0.0
ORANGE	168	90	61	16	1	7.4	5.8	11.6
OSCEOLA	38	28	7	3	0	8.2	7.7	14.8
PALM BEACH	107	47	53	5	2	6.1	4.1	10.9
PASCO	27	18	7	0	2	11.5	8.9	39.3
PINELLAS	60	44	14	2	0	6.4	6.4	8.9
POLK	34	18	16	0	0	6.1	4.3	14.5
PUTNAM	5	2	3	0	0	18.4	11.4	33.3
SAINT JOHNS	7	5	1	0	1	4.4	4.0	4.7
SAINT LUCIE	14	8	4	1	1	4.3	3.5	5.1
SANTA ROSA	3	3	0	0	0	8.0	9.1	0.0
SARASOTA	23	16	6	1	0	6.1	5.1	15.1
SEMINOLE	15	10	4	1	0	4.7	4.4	6.8
SUMTER	0	0	0	0	0	----	----	----
SUWANNEE	0	0	0	0	0	0.0	0.0	----
TAYLOR	0	0	0	0	0	0.0	0.0	----
UNION	0	0	0	0	0	0.0	0.0	0.0
VOLUSIA	24	13	9	0	2	6.0	4.2	12.7
WAKULLA	0	0	0	0	0	----	----	----
WALTON	8	6	1	1	0	6.4	5.3	14.7
WASHINGTON	0	0	0	0	0	----	----	----

---- Indicates that no fetal deaths nor live births occurred for the race group in the county, therefore a rate could not be calculated.

TABLE F-2: RESIDENT FETAL DEATHS AND RATE PER 1,000 LIVE BIRTHS AND FETAL DEATHS BY HISPANIC OR HAITIAN ORIGIN OF MOTHER, BY COUNTY, FLORIDA, 2017

	NUMBERS									RATE
	HISPANIC ORIGIN									TOTAL HISPANIC
	TOTAL	TOTAL HISPANIC	MEXICAN	PUERTO RICAN	CUBAN	OTHER/UNK HISPANIC	HAITIAN	NON-HISPANIC/ NON-HAITIAN	UNK	
FLORIDA	1,553	366	64	100	59	143	122	996	69	5.5
ALACHUA	18	1	1	0	0	0	0	17	0	4.2
BAKER	2	0	0	0	0	0	0	2	0	0.0
BAY	18	1	1	0	0	0	0	15	2	5.2
BRADFORD	3	0	0	0	0	0	0	3	0	0.0
BREVARD	36	3	0	2	0	1	0	30	3	4.3
BROWARD	200	37	2	8	5	22	37	103	23	5.1
CALHOUN	2	0	0	0	0	0	0	2	0	0.0
CHARLOTTE	1	0	0	0	0	0	0	1	0	0.0
CITRUS	12	1	0	1	0	0	0	11	0	12.0
CLAY	14	2	0	2	0	0	0	11	1	10.3
COLLIER	21	7	1	0	1	5	3	10	1	4.6
COLUMBIA	6	0	0	0	0	0	0	6	0	0.0
MIAMI-DADE	211	98	5	6	39	48	29	72	12	4.9
DESOTO	5	4	4	0	0	0	0	1	0	23.7
DIXIE	1	0	0	0	0	0	0	1	0	0.0
DUVAL	96	12	2	5	0	5	0	81	3	7.5
ESCAMBIA	26	0	0	0	0	0	0	25	1	0.0
FLAGLER	2	0	0	0	0	0	0	2	0	0.0
FRANKLIN	3	0	0	0	0	0	0	3	0	0.0
GADSDEN	7	0	0	0	0	0	0	7	0	0.0
GILCHRIST	0	0	0	0	0	0	0	0	0	0.0
GLADES	1	0	0	0	0	0	0	1	0	0.0
GULF	1	0	0	0	0	0	0	0	1	0.0
HAMILTON	1	0	0	0	0	0	0	1	0	0.0
HARDEE	2	1	1	0	0	0	0	1	0	5.2
HENDRY	1	0	0	0	0	0	0	1	0	0.0
HERNANDO	6	1	0	0	1	0	0	5	0	3.9
HIGHLANDS	7	1	0	1	0	0	0	5	1	4.0
HILLSBOROUGH	106	28	7	5	6	10	3	73	2	4.9
HOLMES	1	0	0	0	0	0	0	1	0	0.0
INDIAN RIVER	7	2	2	0	0	0	1	4	0	7.6
JACKSON	1	0	0	0	0	0	0	1	0	0.0
JEFFERSON	4	0	0	0	0	0	0	4	0	0.0
LAFAYETTE	0	0	0	0	0	0	0	0	0	0.0
LAKE	27	3	1	2	0	0	0	22	2	4.6
LEE	53	13	4	4	3	2	5	34	1	5.7
LEON	14	1	0	0	0	1	0	12	1	6.0
LEVY	2	0	0	0	0	0	0	2	0	0.0
LIBERTY	1	0	0	0	0	0	0	1	0	0.0
MADISON	3	0	0	0	0	0	0	3	0	0.0
MANATEE	22	7	5	0	0	2	1	13	1	7.3
MARION	16	2	1	0	0	1	0	13	1	3.6
MARTIN	7	1	0	0	0	1	0	6	0	2.4
MONROE	7	3	0	0	1	2	1	3	0	12.8
NASSAU	4	0	0	0	0	0	0	4	0	0.0
OKALOOSA	27	0	0	0	0	0	0	27	0	0.0
OKEECHOBEE	5	2	1	0	0	1	0	3	0	10.6
ORANGE	119	43	2	24	1	16	9	61	6	7.1
OSCEOLA	29	19	2	11	1	5	0	8	2	7.4
PALM BEACH	96	19	2	3	0	14	29	47	1	4.0
PASCO	47	12	2	8	0	2	1	32	2	12.0
PINELLAS	55	6	3	2	0	1	0	49	0	5.3
POLK	55	16	4	10	1	1	2	37	0	7.2
PUTNAM	10	1	0	1	0	0	0	9	0	8.8
SAINT JOHNS	11	1	0	0	0	1	0	10	0	7.1
SAINT LUCIE	13	2	2	0	0	0	0	10	1	2.8
SANTA ROSA	6	0	0	0	0	0	0	6	0	0.0
SARASOTA	20	1	1	0	0	0	1	18	0	2.6
SEMINOLE	25	5	0	3	0	2	0	20	0	4.3
SUMTER	3	1	1	0	0	0	0	2	0	15.9
SUWANNEE	5	0	0	0	0	0	0	5	0	0.0
TAYLOR	1	0	0	0	0	0	0	1	0	0.0
UNION	2	0	0	0	0	0	0	2	0	0.0
VOLUSIA	30	7	5	2	0	0	0	22	1	7.8
WAKULLA	4	0	0	0	0	0	0	4	0	0.0
WALTON	9	2	2	0	0	0	0	7	0	20.0
WASHINGTON	3	0	0	0	0	0	0	3	0	0.0

TABLE F-3: RESIDENT FETAL DEATHS BY AGE OF MOTHER, BY COUNTY, FLORIDA, 2017

	TOTAL	AGE OF MOTHER													
		<13	13	14	15	16	17	18	19	20-24	25-29	30-34	35-44	45+	UNK
FLORIDA	1,553	0	0	2	2	8	16	31	52	275	378	406	346	9	28
ALACHUA	18	0	0	0	0	0	0	1	0	4	4	7	2	0	0
BAKER	2	0	0	0	0	0	0	0	0	0	1	0	1	0	0
BAY	18	0	0	0	0	0	0	0	0	3	6	7	2	0	0
BRADFORD	3	0	0	0	0	0	0	0	0	1	2	0	0	0	0
BREVARD	36	0	0	0	1	0	0	0	0	5	7	13	8	0	2
BROWARD	200	0	0	0	0	0	1	3	3	23	44	60	58	1	7
CALHOUN	2	0	0	0	0	0	0	0	0	0	0	1	1	0	0
CHARLOTTE	1	0	0	0	0	0	0	0	0	0	0	0	1	0	0
CITRUS	12	0	0	0	0	0	0	0	2	1	5	3	1	0	0
CLAY	14	0	0	0	0	0	1	0	1	2	4	3	3	0	0
COLLIER	21	0	0	0	0	0	0	0	1	2	7	5	4	2	0
COLUMBIA	6	0	0	0	0	0	0	0	1	2	1	2	0	0	0
MIAMI-DADE	211	0	0	0	1	1	2	2	10	35	39	60	45	6	10
DESOTO	5	0	0	0	0	0	0	0	0	0	0	4	1	0	0
DIXIE	1	0	0	0	0	0	0	0	0	1	0	0	0	0	0
DUVAL	96	0	0	1	0	0	0	2	4	22	27	22	16	0	2
ESCAMBIA	26	0	0	0	0	0	0	0	1	5	8	10	2	0	0
FLAGLER	2	0	0	0	0	0	0	0	0	0	2	0	0	0	0
FRANKLIN	3	0	0	0	0	0	0	0	0	0	2	0	1	0	0
GADSDEN	7	0	0	0	0	0	0	0	0	2	4	0	1	0	0
GILCHRIST	0	0	0	0	0	0	0	0	0	0	0	0	0	0	0
GLADES	1	0	0	0	0	0	0	0	0	0	1	0	0	0	0
GULF	1	0	0	0	0	0	0	0	0	0	0	1	0	0	0
HAMILTON	1	0	0	0	0	0	0	0	0	0	0	0	1	0	0
HARDEE	2	0	0	0	0	0	0	0	0	1	0	0	1	0	0
HENDRY	1	0	0	0	0	0	0	1	0	0	0	0	0	0	0
HERNANDO	6	0	0	0	0	0	0	0	2	2	1	1	0	0	0
HIGHLANDS	7	0	0	0	0	0	0	0	1	1	0	2	3	0	0
HILLSBOROUGH	106	0	0	0	0	1	3	2	4	20	21	31	24	0	0
HOLMES	1	0	0	0	0	0	0	0	0	0	1	0	0	0	0
INDIAN RIVER	7	0	0	0	0	0	0	0	0	1	3	2	1	0	0
JACKSON	1	0	0	0	0	0	0	0	0	1	0	0	0	0	0
JEFFERSON	4	0	0	0	0	0	0	0	0	1	2	1	0	0	0
LAFAYETTE	0	0	0	0	0	0	0	0	0	0	0	0	0	0	0
LAKE	27	0	0	0	0	0	0	0	0	7	8	3	8	0	1
LEE	53	0	0	0	0	1	2	0	1	9	13	14	13	0	0
LEON	14	0	0	0	0	0	0	1	1	3	4	0	5	0	0
LEVY	2	0	0	0	0	0	0	0	0	1	1	0	0	0	0
LIBERTY	1	0	0	0	0	0	0	0	0	0	1	0	0	0	0
MADISON	3	0	0	0	0	0	0	0	0	1	2	0	0	0	0
MANATEE	22	0	0	0	0	1	1	0	1	3	3	6	7	0	0
MARION	16	0	0	0	0	0	0	0	1	2	4	1	8	0	0
MARTIN	7	0	0	0	0	0	0	1	0	2	2	1	1	0	0
MONROE	7	0	0	0	0	0	1	0	0	1	0	2	1	0	2
NASSAU	4	0	0	0	0	0	0	0	2	1	0	1	0	0	0
OKALOOSA	27	0	0	0	0	0	0	0	1	10	5	7	3	0	1
OKEECHOBEE	5	0	0	0	0	0	0	0	0	1	3	0	1	0	0
ORANGE	119	0	0	0	0	2	1	4	0	26	25	29	30	0	2
OSCEOLA	29	0	0	0	0	1	1	3	1	4	7	5	7	0	0
PALM BEACH	96	0	0	0	0	0	0	3	5	14	25	24	24	0	1
PASCO	47	0	0	0	0	0	0	3	2	5	14	15	8	0	0
PINELLAS	55	0	0	0	0	0	0	0	2	9	19	12	13	0	0
POLK	55	0	0	1	0	0	1	2	1	10	14	16	10	0	0
PUTNAM	10	0	0	0	0	0	0	1	0	3	4	1	1	0	0
SAINT JOHNS	11	0	0	0	0	0	0	0	0	2	4	3	2	0	0
SAINT LUCIE	13	0	0	0	0	0	1	0	0	4	1	4	3	0	0
SANTA ROSA	6	0	0	0	0	0	0	1	0	1	2	1	1	0	0
SARASOTA	20	0	0	0	0	1	0	1	1	3	7	5	2	0	0
SEMINOLE	25	0	0	0	0	0	0	0	0	4	5	7	9	0	0
SUMTER	3	0	0	0	0	0	0	0	0	2	0	1	0	0	0
SUWANNEE	5	0	0	0	0	0	0	0	0	2	1	1	1	0	0
TAYLOR	1	0	0	0	0	0	0	0	1	0	0	0	0	0	0
UNION	2	0	0	0	0	0	0	0	0	2	0	0	0	0	0
VOLUSIA	30	0	0	0	0	0	0	0	0	2	10	10	8	0	0
WAKULLA	4	0	0	0	0	0	0	0	0	3	1	0	0	0	0
WALTON	9	0	0	0	0	0	0	0	2	3	1	1	2	0	0
WASHINGTON	3	0	0	0	0	0	1	0	0	0	0	1	1	0	0

TABLE F-4: RESIDENT AND RECORDED NEONATAL DEATHS (UNDER 28 DAYS) AND RATES PER 1,000 LIVE BIRTHS, BY RACE, BY COUNTY, FLORIDA, 2017

	RESIDENT NEONATAL DEATHS					RATES*		
	NUMBERS					TOTAL	WHITE	BLACK
	TOTAL	WHITE	BLACK	OTHER	UNK			
FLORIDA	900	473	347	74	6	4.0	3.0	7.0
ALACHUA	18	6	10	2	0	6.4	3.6	11.4
BAKER	1	0	0	1	0	3.2	0.0	0.0
BAY	7	3	1	2	1	3.0	1.7	2.9
BRADFORD	4	3	0	1	0	14.2	13.6	0.0
BREVARD	11	10	0	1	0	2.1	2.5	0.0
BROWARD	71	19	47	3	2	3.2	1.5	5.6
CALHOUN	1	0	0	1	0	8.0	0.0	0.0
CHARLOTTE	6	6	0	0	0	5.7	6.6	0.0
CITRUS	2	2	0	0	0	1.8	2.0	0.0
CLAY	7	6	0	1	0	3.2	3.5	0.0
COLLIER	15	11	4	0	0	4.7	4.2	9.2
COLUMBIA	3	3	0	0	0	3.8	4.9	0.0
MIAMI-DADE	114	60	51	3	0	3.6	2.5	8.0
DESOTO	2	2	0	0	0	5.2	6.0	0.0
DIXIE	0	0	0	0	0	0.0	0.0	0.0
DUVAL	68	25	39	4	0	5.2	3.5	8.3
ESCAMBIA	20	9	9	2	0	5.1	3.7	7.4
FLAGLER	7	5	0	2	0	8.6	7.6	0.0
FRANKLIN	1	1	0	0	0	8.8	10.1	0.0
GADSDEN	3	0	3	0	0	5.4	0.0	8.6
GILCHRIST	0	0	0	0	0	0.0	0.0	0.0
GLADES	0	0	0	0	0	0.0	0.0	0.0
GULF	1	0	1	0	0	8.1	0.0	76.9
HAMILTON	0	0	0	0	0	0.0	0.0	0.0
HARDEE	3	3	0	0	0	8.5	9.6	0.0
HENDRY	4	4	0	0	0	6.9	8.1	0.0
HERNANDO	9	7	1	1	0	5.8	5.2	9.3
HIGHLANDS	5	1	3	0	1	5.6	1.4	20.5
HILLSBOROUGH	81	36	36	9	0	4.7	2.9	9.4
HOLMES	0	0	0	0	0	0.0	0.0	0.0
INDIAN RIVER	7	5	0	2	0	5.5	6.0	0.0
JACKSON	1	1	0	0	0	2.0	2.9	0.0
JEFFERSON	1	0	1	0	0	7.0	0.0	17.5
LAFAYETTE	0	0	0	0	0	0.0	0.0	0.0
LAKE	18	10	5	3	0	5.5	3.9	10.2
LEE	24	17	5	2	0	3.6	3.1	5.1
LEON	14	4	6	4	0	4.5	2.5	4.4
LEVY	7	6	1	0	0	17.0	17.3	20.4
LIBERTY	0	0	0	0	0	0.0	0.0	0.0
MADISON	1	0	0	1	0	5.7	0.0	0.0
MANATEE	10	5	5	0	0	2.9	1.9	11.4
MARION	16	11	4	1	0	4.6	4.1	5.9
MARTIN	3	1	0	0	2	2.4	1.0	0.0
MONROE	3	3	0	0	0	4.1	5.3	0.0
NASSAU	7	7	0	0	0	8.4	9.3	0.0
OKALOOSA	5	5	0	0	0	1.9	2.3	0.0
OKEECHOBEE	4	4	0	0	0	7.4	8.4	0.0
ORANGE	88	29	51	8	0	5.2	2.7	11.4
OSCEOLA	11	9	2	0	0	2.5	2.5	4.7
PALM BEACH	44	20	20	4	0	2.9	2.1	4.7
PASCO	27	15	5	7	0	5.3	3.4	12.6
PINELLAS	31	21	10	0	0	3.8	3.6	6.7
POLK	33	21	10	2	0	4.2	3.6	6.4
PUTNAM	3	1	2	0	0	3.6	1.7	9.6
SAINT JOHNS	8	5	2	1	0	3.7	2.8	12.9
SAINT LUCIE	3	1	1	1	0	1.0	0.5	1.2
SANTA ROSA	7	7	0	0	0	3.6	4.1	0.0
SARASOTA	6	3	2	1	0	2.1	1.3	7.9
SEMINOLE	20	14	3	3	0	4.2	4.0	4.0
SUMTER	5	2	3	0	0	10.8	5.4	38.0
SUWANNEE	2	2	0	0	0	4.7	5.8	0.0
TAYLOR	0	0	0	0	0	0.0	0.0	0.0
UNION	1	1	0	0	0	7.2	8.3	0.0
VOLUSIA	21	16	4	1	0	4.2	4.1	4.9
WAKULLA	0	0	0	0	0	0.0	0.0	0.0
WALTON	3	3	0	0	0	3.9	4.2	0.0
WASHINGTON	2	2	0	0	0	8.0	10.5	0.0

*Rates based on neonatal deaths by race of decedent, live births by race of mother.

---- Indicates that no neonatal deaths nor live births occurred for the race group in the county, therefore a rate could not be calculated.

TABLE F-4 (Cont.): RESIDENT AND RECORDED NEONATAL DEATHS (UNDER 28 DAYS) AND RATES PER 1,000 LIVE BIRTHS, BY RACE, BY COUNTY, FLORIDA, 2017

	RECORDED NEONATAL DEATHS					RATES*		
	NUMBERS					TOTAL	WHITE	BLACK
	TOTAL	WHITE	BLACK	OTHER	UNK			
FLORIDA	911	474	357	74	6	4.1	3.0	7.2
ALACHUA	64	39	20	5	0	10.6	9.2	14.7
BAKER	0	0	0	0	0	0.0	0.0	0.0
BAY	10	4	3	2	1	3.5	1.8	7.3
BRADFORD	1	1	0	0	0	500.0	1,000.0	0.0
BREVARD	7	7	0	0	0	1.4	1.8	0.0
BROWARD	82	23	52	5	2	3.4	1.7	5.6
CALHOUN	0	0	0	0	0	0.0	0.0	----
CHARLOTTE	4	4	0	0	0	4.0	4.8	0.0
CITRUS	2	2	0	0	0	2.3	2.6	0.0
CLAY	6	3	2	1	0	2.3	1.6	3.4
COLLIER	9	6	3	0	0	2.6	2.1	7.1
COLUMBIA	1	1	0	0	0	1.6	2.4	0.0
MIAMI-DADE	126	68	56	2	0	4.4	3.0	10.6
DESOTO	0	0	0	0	0	0.0	0.0	0.0
DIXIE	0	0	0	0	0	0.0	0.0	----
DUVAL	79	35	38	6	0	5.4	4.0	8.3
ESCAMBIA	33	18	12	3	0	5.8	4.5	9.1
FLAGLER	0	0	0	0	0	0.0	0.0	0.0
FRANKLIN	1	1	0	0	0	1,000.0	----	0.0
GADSDEN	0	0	0	0	0	0.0	0.0	----
GILCHRIST	0	0	0	0	0	0.0	0.0	----
GLADES	0	0	0	0	0	----	----	----
GULF	0	0	0	0	0	----	----	----
HAMILTON	0	0	0	0	0	----	----	----
HARDEE	1	1	0	0	0	333.3	333.3	----
HENDRY	0	0	0	0	0	0.0	0.0	0.0
HERNANDO	1	1	0	0	0	0.6	0.7	0.0
HIGHLANDS	3	1	1	0	1	2.6	1.1	6.3
HILLSBOROUGH	120	63	45	12	0	5.8	4.3	10.3
HOLMES	0	0	0	0	0	----	----	----
INDIAN RIVER	2	1	0	1	0	1.9	1.5	0.0
JACKSON	3	2	0	1	0	7.2	7.4	0.0
JEFFERSON	0	0	0	0	0	----	----	----
LAFAYETTE	0	0	0	0	0	0.0	0.0	----
LAKE	5	3	2	0	0	1.9	1.5	4.4
LEE	26	19	5	2	0	3.8	3.4	5.0
LEON	13	4	6	3	0	2.7	1.6	3.1
LEVY	0	0	0	0	0	0.0	0.0	0.0
LIBERTY	0	0	0	0	0	----	----	----
MADISON	0	0	0	0	0	0.0	0.0	----
MANATEE	3	1	2	0	0	1.2	0.6	6.8
MARION	2	2	0	0	0	0.8	1.1	0.0
MARTIN	2	0	0	0	2	2.2	0.0	0.0
MONROE	0	0	0	0	0	0.0	0.0	0.0
NASSAU	2	2	0	0	0	3.7	4.3	0.0
OKALOOSA	1	1	0	0	0	0.5	0.6	0.0
OKEECHOBEE	0	0	0	0	0	0.0	0.0	0.0
ORANGE	161	79	68	14	0	7.1	5.1	13.1
OSCEOLA	3	2	1	0	0	0.7	0.6	2.1
PALM BEACH	38	18	14	6	0	2.2	1.6	2.9
PASCO	4	3	0	1	0	1.7	1.5	0.0
PINELLAS	45	30	11	4	0	4.8	4.4	7.0
POLK	13	8	4	1	0	2.3	1.9	3.7
PUTNAM	1	0	1	0	0	3.7	0.0	11.5
SAINT JOHNS	6	2	2	2	0	3.8	1.6	9.5
SAINT LUCIE	3	2	1	0	0	0.9	0.9	1.3
SANTA ROSA	2	2	0	0	0	5.3	6.1	0.0
SARASOTA	9	4	4	1	0	2.4	1.3	10.2
SEMINOLE	9	5	2	2	0	2.9	2.2	3.4
SUMTER	0	0	0	0	0	----	----	----
SUWANNEE	0	0	0	0	0	0.0	0.0	----
TAYLOR	0	0	0	0	0	0.0	0.0	----
UNION	0	0	0	0	0	0.0	0.0	0.0
VOLUSIA	6	4	2	0	0	1.5	1.3	2.8
WAKULLA	0	0	0	0	0	----	----	----
WALTON	2	2	0	0	0	1.6	1.8	0.0
WASHINGTON	0	0	0	0	0	----	----	----

*Rates based on neonatal deaths by race of decedent, live births by race of mother.

---- Indicates that no neonatal deaths nor live births occurred for the race group in the county, therefore a rate could not be calculated.

TABLE F-5: RESIDENT AND RECORDED INFANT DEATHS (UNDER 1 YEAR) AND RATES PER 1,000 LIVE BIRTHS, BY RACE, BY COUNTY, FLORIDA, 2017

	RESIDENT INFANT DEATHS					RATES*		
	NUMBERS							
	TOTAL	WHITE	BLACK	OTHER	UNK	TOTAL	WHITE	BLACK
FLORIDA	1355	696	536	115	8	6.1	4.4	10.8
ALACHUA	22	6	10	6	0	7.8	3.6	11.4
BAKER	2	1	0	1	0	6.4	3.8	0.0
BAY	13	4	6	2	1	5.6	2.3	17.6
BRADFORD	5	4	0	1	0	17.7	18.1	0.0
BREVARD	27	20	3	4	0	5.2	5.0	3.9
BROWARD	109	31	71	5	2	4.9	2.5	8.4
CALHOUN	2	1	0	1	0	16.0	8.8	0.0
CHARLOTTE	9	9	0	0	0	8.5	9.9	0.0
CITRUS	7	6	0	1	0	6.3	5.9	0.0
CLAY	10	9	0	1	0	4.6	5.2	0.0
COLLIER	19	13	6	0	0	6.0	5.0	13.9
COLUMBIA	8	7	1	0	0	10.0	11.4	6.5
MIAMI-DADE	162	85	73	4	0	5.1	3.5	11.5
DESOTO	4	3	1	0	0	10.4	8.9	21.7
DIXIE	2	1	1	0	0	14.4	8.2	76.9
DUVAL	106	35	64	6	1	8.0	4.9	13.6
ESCAMBIA	30	13	14	3	0	7.6	5.4	11.5
FLAGLER	7	5	0	2	0	8.6	7.6	0.0
FRANKLIN	1	1	0	0	0	8.8	10.1	0.0
GADSDEN	4	0	4	0	0	7.2	0.0	11.4
GILCHRIST	0	0	0	0	0	0.0	0.0	0.0
GLADES	0	0	0	0	0	0.0	0.0	0.0
GULF	2	0	1	1	0	16.3	0.0	76.9
HAMILTON	0	0	0	0	0	0.0	0.0	0.0
HARDEE	3	3	0	0	0	8.5	9.6	0.0
HENDRY	5	5	0	0	0	8.7	10.1	0.0
HERNANDO	17	13	2	2	0	11.0	9.7	18.5
HIGHLANDS	9	2	5	1	1	10.2	2.9	34.2
HILLSBOROUGH	114	52	50	12	0	6.5	4.2	13.0
HOLMES	1	1	0	0	0	4.5	4.8	0.0
INDIAN RIVER	9	7	0	2	0	7.1	8.5	0.0
JACKSON	1	1	0	0	0	2.0	2.9	0.0
JEFFERSON	1	0	1	0	0	7.0	0.0	17.5
LAFAYETTE	0	0	0	0	0	0.0	0.0	0.0
LAKE	23	13	5	5	0	7.0	5.0	10.2
LEE	35	25	8	2	0	5.2	4.6	8.1
LEON	21	4	13	4	0	6.7	2.5	9.5
LEVY	8	7	1	0	0	19.5	20.2	20.4
LIBERTY	0	0	0	0	0	0.0	0.0	0.0
MADISON	1	0	0	1	0	5.7	0.0	0.0
MANATEE	17	9	8	0	0	4.9	3.4	18.2
MARION	27	16	7	4	0	7.7	6.0	10.4
MARTIN	7	5	0	0	2	5.5	5.2	0.0
MONROE	4	3	0	0	1	5.5	5.3	0.0
NASSAU	9	9	0	0	0	10.7	11.9	0.0
OKALOOSA	12	10	2	0	0	4.5	4.6	7.5
OKEECHOBEE	4	4	0	0	0	7.4	8.4	0.0
ORANGE	121	41	69	11	0	7.2	3.8	15.5
OSCEOLA	17	13	3	1	0	3.9	3.7	7.0
PALM BEACH	67	37	26	4	0	4.5	3.8	6.0
PASCO	29	16	5	8	0	5.6	3.6	12.6
PINELLAS	49	29	17	3	0	6.0	4.9	11.4
POLK	61	32	26	3	0	7.8	5.4	16.6
PUTNAM	7	4	3	0	0	8.3	6.7	14.4
SAINT JOHNS	10	7	2	1	0	4.7	3.9	12.9
SAINT LUCIE	14	4	6	4	0	4.6	2.0	7.3
SANTA ROSA	8	7	1	0	0	4.2	4.1	11.1
SARASOTA	15	9	5	1	0	5.3	3.8	19.7
SEMINOLE	32	19	6	7	0	6.7	5.4	7.9
SUMTER	6	3	3	0	0	13.0	8.1	38.0
SUWANNEE	5	5	0	0	0	11.8	14.4	0.0
TAYLOR	0	0	0	0	0	0.0	0.0	0.0
UNION	1	1	0	0	0	7.2	8.3	0.0
VOLUSIA	29	21	7	1	0	5.8	5.4	8.5
WAKULLA	0	0	0	0	0	0.0	0.0	0.0
WALTON	3	3	0	0	0	3.9	4.2	0.0
WASHINGTON	2	2	0	0	0	8.0	10.5	0.0

*Rates based on infant deaths by race of decedent, live births by race of mother.

---- Indicates that no neonatal deaths nor live births occurred for the race group in the county, therefore a rate could not be calculated.

TABLE F-5 (Cont.): RESIDENT AND RECORDED INFANT DEATHS (UNDER 1 YEAR) AND RATES PER 1,000 LIVE BIRTHS, BY RACE, BY COUNTY, FLORIDA, 2017

	RECORDED INFANT DEATHS					RATES*		
	NUMBERS							
	TOTAL	WHITE	BLACK	OTHER	UNK	TOTAL	WHITE	BLACK
FLORIDA	1369	698	545	118	8	6.1	4.4	10.9
ALACHUA	82	46	24	12	0	13.6	10.8	17.6
BAKER	1	1	0	0	0	500.0	1,000.0	0.0
BAY	15	5	7	2	1	5.2	2.3	16.9
BRADFORD	1	1	0	0	0	500.0	1,000.0	0.0
BREVARD	19	14	3	2	0	3.8	3.6	4.3
BROWARD	128	38	80	8	2	5.3	2.9	8.7
CALHOUN	1	1	0	0	0	1,000.0	1,000.0	----
CHARLOTTE	4	4	0	0	0	4.0	4.8	0.0
CITRUS	6	5	0	1	0	7.0	6.4	0.0
CLAY	11	7	3	1	0	4.3	3.8	5.2
COLLIER	11	7	4	0	0	3.2	2.5	9.4
COLUMBIA	4	3	1	0	0	6.5	7.1	5.7
MIAMI-DADE	187	102	82	2	1	6.5	4.5	15.5
DESOTO	0	0	0	0	0	0.0	0.0	0.0
DIXIE	2	1	1	0	0	2,000.0	1,000.0	----
DUVAL	121	49	62	9	1	8.2	5.6	13.6
ESCAMBIA	45	23	17	5	0	7.9	5.7	13.0
FLAGLER	0	0	0	0	0	0.0	0.0	0.0
FRANKLIN	1	1	0	0	0	1,000.0	----	0.0
GADSDEN	0	0	0	0	0	0.0	0.0	----
GILCHRIST	0	0	0	0	0	0.0	0.0	----
GLADES	0	0	0	0	0	----	----	----
GULF	0	0	0	0	0	----	----	----
HAMILTON	0	0	0	0	0	----	----	----
HARDEE	1	1	0	0	0	333.3	333.3	----
HENDRY	0	0	0	0	0	0.0	0.0	0.0
HERNANDO	5	4	1	0	0	2.9	2.7	9.9
HIGHLANDS	8	2	4	1	1	7.0	2.1	25.3
HILLSBOROUGH	160	81	64	15	0	7.8	5.5	14.7
HOLMES	1	1	0	0	0	----	----	----
INDIAN RIVER	3	2	0	1	0	2.8	3.1	0.0
JACKSON	3	2	0	1	0	7.2	7.4	0.0
JEFFERSON	0	0	0	0	0	----	----	----
LAFAYETTE	0	0	0	0	0	0.0	0.0	----
LAKE	9	6	2	1	0	3.5	3.0	4.4
LEE	36	26	8	2	0	5.3	4.6	8.0
LEON	21	4	14	3	0	4.4	1.6	7.1
LEVY	0	0	0	0	0	0.0	0.0	0.0
LIBERTY	0	0	0	0	0	----	----	----
MADISON	0	0	0	0	0	0.0	0.0	----
MANATEE	6	3	3	0	0	2.4	1.7	10.1
MARION	11	7	3	1	0	4.4	3.7	6.1
MARTIN	5	3	0	0	2	5.5	4.8	0.0
MONROE	0	0	0	0	0	0.0	0.0	0.0
NASSAU	2	2	0	0	0	3.7	4.3	0.0
OKALOOSA	5	4	1	0	0	2.3	2.3	4.6
OKEECHOBEE	0	0	0	0	0	0.0	0.0	0.0
ORANGE	214	103	89	22	0	9.5	6.7	17.2
OSCEOLA	8	6	2	0	0	1.7	1.7	4.3
PALM BEACH	54	30	16	8	0	3.1	2.6	3.3
PASCO	6	4	0	2	0	2.6	2.0	0.0
PINELLAS	75	47	20	8	0	8.1	6.9	12.8
POLK	33	17	13	3	0	5.9	4.1	12.0
PUTNAM	1	0	1	0	0	3.7	0.0	11.5
SAINT JOHNS	8	4	2	2	0	5.1	3.2	9.5
SAINT LUCIE	7	2	4	1	0	2.2	0.9	5.1
SANTA ROSA	2	2	0	0	0	5.3	6.1	0.0
SARASOTA	13	7	5	1	0	3.5	2.2	12.8
SEMINOLE	17	8	5	4	0	5.4	3.5	8.5
SUMTER	0	0	0	0	0	----	----	----
SUWANNEE	3	3	0	0	0	600.0	600.0	----
TAYLOR	0	0	0	0	0	0.0	0.0	----
UNION	0	0	0	0	0	0.0	0.0	0.0
VOLUSIA	11	7	4	0	0	2.8	2.3	5.7
WAKULLA	0	0	0	0	0	----	----	----
WALTON	2	2	0	0	0	1.6	1.8	0.0
WASHINGTON	0	0	0	0	0	----	----	----

*Rates based on infant deaths by race of decedent, live births by race of mother.

---- Indicates that no neonatal deaths nor live births occurred for the race group in the county, therefore a rate could not be calculated.

TABLE F-6: RESIDENT INFANT DEATHS AND RATE PER 1,000 LIVE BIRTHS BY HISPANIC OR HAITIAN ORIGIN, BY COUNTY, FLORIDA, 2017

	NUMBERS										RATE
	HISPANIC ORIGIN										
	TOTAL	PUERTO RICAN			OTHER/UNK		NON-HISPANIC/ NON-HAITIAN		UNK	TOTAL HISPANIC	
FLORIDA	1,355	350	79	103	55	113	81	883	41	5.2	
ALACHUA	22	2	0	2	0	0	0	20	0	8.4	
BAKER	2	0	0	0	0	0	0	2	0	0.0	
BAY	13	0	0	0	0	0	0	11	2	0.0	
BRADFORD	5	0	0	0	0	0	0	5	0	0.0	
BREVARD	27	3	0	1	0	2	0	23	1	4.3	
BROWARD	109	23	2	7	1	13	19	61	6	3.2	
CALHOUN	2	0	0	0	0	0	0	2	0	0.0	
CHARLOTTE	9	2	0	0	2	0	0	7	0	15.9	
CITRUS	7	2	1	1	0	0	0	5	0	24.4	
CLAY	10	0	0	0	0	0	0	9	1	0.0	
COLLIER	19	9	2	0	1	6	3	5	2	6.0	
COLUMBIA	8	1	0	1	0	0	0	7	0	17.2	
MIAMI-DADE	162	85	6	6	34	39	16	53	8	4.3	
DESOTO	4	2	2	0	0	0	0	2	0	12.1	
DIXIE	2	0	0	0	0	0	0	2	0	0.0	
DUVAL	106	11	2	7	1	1	1	90	4	6.9	
ESCAMBIA	30	3	2	0	0	1	0	27	0	11.2	
FLAGLER	7	2	0	1	0	1	0	5	0	20.2	
FRANKLIN	1	0	0	0	0	0	0	1	0	0.0	
GADSDEN	4	0	0	0	0	0	0	4	0	0.0	
GILCHRIST	0	0	0	0	0	0	0	0	0	0.0	
GLADES	0	0	0	0	0	0	0	0	0	0.0	
GULF	2	0	0	0	0	0	0	2	0	0.0	
HAMILTON	0	0	0	0	0	0	0	0	0	0.0	
HARDEE	3	2	2	0	0	0	0	0	1	10.5	
HENDRY	5	4	3	0	0	1	0	1	0	11.9	
HERNANDO	17	4	0	3	1	0	0	13	0	15.7	
HIGHLANDS	9	1	0	1	0	0	0	7	1	4.0	
HILLSBOROUGH	114	35	16	9	5	5	4	75	0	6.2	
HOLMES	1	0	0	0	0	0	0	1	0	0.0	
INDIAN RIVER	9	3	2	1	0	0	0	6	0	11.5	
JACKSON	1	0	0	0	0	0	0	1	0	0.0	
JEFFERSON	1	0	0	0	0	0	0	1	0	0.0	
LAFAYETTE	0	0	0	0	0	0	0	0	0	0.0	
LAKE	23	7	1	4	0	2	0	16	0	10.7	
LEE	35	14	5	4	2	3	2	19	0	6.2	
LEON	21	2	0	0	0	2	0	19	0	12.0	
LEVY	8	1	1	0	0	0	0	7	0	27.8	
LIBERTY	0	0	0	0	0	0	0	0	0	0.0	
MADISON	1	0	0	0	0	0	0	1	0	0.0	
MANATEE	17	7	6	0	1	0	1	9	0	7.4	
MARION	27	7	1	4	1	1	0	20	0	12.6	
MARTIN	7	1	0	0	0	1	0	5	1	2.4	
MONROE	4	2	1	0	0	1	0	1	1	8.6	
NASSAU	9	0	0	0	0	0	0	9	0	0.0	
OKALOOSA	12	0	0	0	0	0	0	12	0	0.0	
ORKEECHOBEE	4	3	1	2	0	0	0	1	0	16.1	
ORANGE	121	33	5	17	0	11	19	63	6	5.5	
OSCEOLA	17	12	1	9	0	2	1	4	0	4.7	
PALM BEACH	67	22	3	2	4	13	11	31	3	4.6	
PASCO	29	9	2	4	1	2	0	20	0	9.1	
PINELLAS	49	6	1	4	0	1	0	43	0	5.4	
POLK	61	10	5	2	1	2	3	47	1	4.6	
PUTNAM	7	1	1	0	0	0	0	6	0	8.8	
SAINT JOHNS	10	4	1	2	0	1	0	6	0	28.8	
SAINT LUCIE	14	3	1	2	0	0	1	10	0	4.2	
SANTA ROSA	8	0	0	0	0	0	0	8	0	0.0	
SARASOTA	15	1	1	0	0	0	0	14	0	2.6	
SEMINOLE	32	7	1	4	0	2	0	24	1	6.1	
SUMTER	6	0	0	0	0	0	0	6	0	0.0	
SUWANNEE	5	0	0	0	0	0	0	4	1	0.0	
TAYLOR	0	0	0	0	0	0	0	0	0	0.0	
UNION	1	0	0	0	0	0	0	1	0	0.0	
VOLUSIA	29	4	1	3	0	0	0	24	1	4.5	
WAKULLA	0	0	0	0	0	0	0	0	0	0.0	
WALTON	3	0	0	0	0	0	0	3	0	0.0	
WASHINGTON	2	0	0	0	0	0	0	2	0	0.0	

**TABLE F-7: RESIDENT INFANT, NEONATAL AND POST-NEONATAL DEATHS FROM SELECTED CAUSES
BY RACE, FLORIDA, 2017**

	TOTAL			POST NEO- NATAL	WHITE			POST NEO- NATAL
	NEONATAL		INFANT		NEONATAL		INFANT	
	<1 DAY	1-27 DAYS			<1 DAY	1-27 DAYS		
TOTAL	1,355	496	404	455	696	247	226	223
Intestinal Infectious Disease	0	0	0	0	0	0	0	0
Diarrhea & Gastroenteritis--Infectious Origin	11	0	0	11	6	0	0	6
Tuberculosis	0	0	0	0	0	0	0	0
Tetanus	0	0	0	0	0	0	0	0
Diphtheria	0	0	0	0	0	0	0	0
Whooping Cough	0	0	0	0	0	0	0	0
Meningococcal Infection	0	0	0	0	0	0	0	0
Septicemia	18	0	0	18	5	0	0	5
Congenital Syphilis	0	0	0	0	0	0	0	0
Gonococcal Infection	0	0	0	0	0	0	0	0
Acute Poliomyelitis	0	0	0	0	0	0	0	0
Varicella (Chicken Pox)	0	0	0	0	0	0	0	0
Measles	0	0	0	0	0	0	0	0
HIV Disease	0	0	0	0	0	0	0	0
Mumps	0	0	0	0	0	0	0	0
Other & Unspec Viral Diseases	6	0	1	5	4	0	1	3
Candidiasis	0	0	0	0	0	0	0	0
Malaria	0	0	0	0	0	0	0	0
Pneumocystosis	0	0	0	0	0	0	0	0
Other & Unspecified Infectious & Parasitic Diseases	2	1	0	1	1	0	0	1
Hodgkins Disease & Non-Hodgkins Lymphomas	0	0	0	0	0	0	0	0
Leukemia	0	0	0	0	0	0	0	0
Other & Unspecified Malignant Neoplasm	2	0	0	2	1	0	0	1
In Situ/Benign/Malignant Neoplasms Uncert/Unk Behavior	2	0	2	0	2	0	2	0
Anemias	0	0	0	0	0	0	0	0
Blood, Blood-Forming, Hemorrhagic Diseases	6	0	2	4	2	0	1	1
Disorders Involving Immune Mechanism	1	0	0	1	1	0	0	1
Short Stature	0	0	0	0	0	0	0	0
Nutritional Deficiencies	0	0	0	0	0	0	0	0
Cystic Fibrosis	0	0	0	0	0	0	0	0
Fluid/Electrolyte/Acid-Base/Volume Depletion Disorders	5	0	1	4	4	0	1	3
Other Endocrine, Nutritional, Metabolic Diseases	7	0	2	5	5	0	2	3
Meningitis	1	0	0	1	1	0	0	1
Infantile Spinal Muscular Atrophy, Type 1 (Werdnig-Hoffman)	0	0	0	0	0	0	0	0
Infantile Cerebral Palsy	0	0	0	0	0	0	0	0
Anoxic Brain Damage	1	0	0	1	1	0	0	1
Other Nervous System Diseases	7	0	3	4	3	0	2	1
Ear & Mastoid Process Diseases	0	0	0	0	0	0	0	0
Pulmonary Heart/Circulation Diseases	3	0	1	2	1	0	1	0
Pericarditis, Endocarditis, Myocarditis	0	0	0	0	0	0	0	0
Cardiomyopathy	6	0	2	4	1	0	0	1
Cardiac Arrest	0	0	0	0	0	0	0	0
Cerebrovascular Diseases	6	0	0	6	2	0	0	2
Other Circulatory System Diseases	14	0	3	11	6	0	2	4
Acute Upper Respiratory Infections	0	0	0	0	0	0	0	0
Influenza	0	0	0	0	0	0	0	0
Pneumonia	6	0	0	6	2	0	0	2

TABLE F-7 (Cont.): RESIDENT INFANT, NEONATAL AND POST-NEONATAL DEATHS FROM SELECTED CAUSES, BY RACE, FLORIDA, 2017

	TOTAL			POST NEO- NATAL	WHITE			POST NEO- NATAL
	NEONATAL		INFANT		NEONATAL		INFANT	
	<1 DAY	1-27 DAYS			<1 DAY	1-27 DAYS		
Acute Bronchitis & Acute Bronchiolitis	0	0	0	0	0	0	0	0
Bronchitis, Chronic & Unspecified	0	0	0	0	0	0	0	0
Asthma	0	0	0	0	0	0	0	0
Pneumonitis Due to Solids & Liquids	0	0	0	0	0	0	0	0
Other & Unspecified Respiratory System Diseases	11	0	0	11	5	0	0	5
Gastritis, Duodenitis, Noninfective Enteritis/Colitis	2	0	1	1	2	0	1	1
Hernia Abdom Cavity & Intestinal Obstruct W/O Hernia	0	0	0	0	0	0	0	0
Other & Unspec Digestive System Disease	7	0	5	2	4	0	2	2
Renal Failure & Other Kidney Disorders	7	0	4	3	3	0	1	2
Other & Unspec Genitourinary System Dis	3	1	1	1	1	0	1	0
PERINATAL PERIOD CONDITIONS	670	388	255	27	330	177	139	14
Maternal Hypertensive Disorders	4	4	0	0	1	1	0	0
Maternal Conditions Unrelated Present Pregnancy	3	2	1	0	1	0	1	0
Incompetent Cervix	27	26	1	0	12	12	0	0
Premature Rupture of Membranes	37	35	2	0	14	14	0	0
Multiple Pregnancy	8	7	1	0	4	3	1	0
Maternal Complications of Pregnancy	10	10	0	0	4	4	0	0
Placenta Complications	29	24	5	0	14	10	4	0
Cord Complications	0	0	0	0	0	0	0	0
Chorioamnionitis	30	27	3	0	15	13	2	0
Other & Unspecified Membrane Abnormalities	0	0	0	0	0	0	0	0
Other Complications of Labor & Delivery	1	1	0	0	1	1	0	0
Noxious Influences Via Placenta or Breast Milk	7	7	0	0	2	2	0	0
Slow Fetal Growth & Fetal Malnutrition	7	1	6	0	5	0	5	0
Extreme Low Birth Weight or Extreme Immaturity	152	127	21	4	77	64	11	2
Other Low Birth Weight or Preterm	60	53	3	4	27	22	3	2
Long Gestation & High Birth Weight	0	0	0	0	0	0	0	0
Birth Trauma	1	0	1	0	1	0	1	0
Intrauterine Hypoxia	18	3	15	0	7	0	7	0
Birth Asphyxia	8	1	7	0	4	0	4	0
Respiratory Distress	27	10	17	0	14	5	9	0
Congenital Pneumonia	1	0	1	0	1	0	1	0
Neonatal Aspiration Syndromes	1	0	1	0	1	0	1	0
Interstitial Emphysema & Related Conditions	4	2	0	2	2	1	0	1
Pulmonary Hemorrhage	6	0	6	0	2	0	2	0
Chronic Respiratory Disease	7	0	0	7	4	0	0	4
Atelectasis	16	9	7	0	7	4	3	0
Other Respiratory Conditions	4	1	1	2	4	1	1	2
Bacterial Sepsis	50	9	40	1	28	6	21	1
Omphalitis With or Without Hemorrhage	0	0	0	0	0	0	0	0
All Other Infections	8	2	5	1	4	1	3	0
Neonatal Hemorrhage	26	0	26	0	16	0	16	0
Hemorrhagic Disease of Newborn	0	0	0	0	0	0	0	0
Hemolytic Dis Due to Isoimmunization/Perinat Jaundice	1	0	1	0	1	0	1	0
Hematological Disorders	3	0	3	0	3	0	3	0
Diabetes Mellitus, Maternal or Neonatal	1	0	1	0	1	0	1	0
Necrotizing Enterocolitis	20	0	19	1	7	0	7	0
Hydrops Fetalis Not Due To Hemolytic Dis	8	3	4	1	7	3	4	0

TABLE F-7 (Cont.): RESIDENT INFANT, NEONATAL AND POST-NEONATAL DEATHS FROM SELECTED CAUSES, BY RACE, FLORIDA, 2017

	TOTAL			POST NEO- NATAL	WHITE			POST NEO- NATAL
	NEONATAL		INFANT		NEONATAL		INFANT	
	<1 DAY	1-27 DAYS			<1 DAY	1-27 DAYS		
Other Perinatal Conditions	85	24	57	4	39	10	27	2
CONGENITAL / CHROMOSOMAL ANOMALIES	268	104	96	68	159	68	54	37
Anencephaly & Similar Anomalies	16	12	3	1	10	8	1	1
Congenital Hydrocephalus	4	1	0	3	1	0	0	1
Spina Bifida	2	1	1	0	1	0	1	0
Other Cong Malf Nervous System	18	8	5	5	9	5	2	2
Congenital Malf of Heart	53	9	19	25	32	5	14	13
Other Congenital Malf of Circulatory Sys	7	1	4	2	6	1	3	2
Congenital Malf of Respiratory Sys	23	10	11	2	14	5	7	2
Congenital Anomalies of Digestive Sys	2	1	1	0	1	0	1	0
Congenital Malf of Genitourinary Sys	30	15	12	3	16	8	6	2
Congenital Malf of Musculoskeletal Sys	30	15	13	2	19	13	5	1
Downs Syndrome	4	0	1	3	2	0	0	2
Edwards Syndrome	31	9	13	9	19	6	7	6
Patau Syndrome	15	4	6	5	7	3	3	1
Other Congenital Malf	28	17	5	6	19	14	2	3
Other Chromosomal Abnorm	5	1	2	2	3	0	2	1
Sudden Infant Death Syndrome	61	0	3	58	27	0	3	24
Symptoms, Signs, Abn Clinical/Lab Findings	65	2	10	53	39	2	5	32
All Other Diseases	1	0	0	1	0	0	0	0
Unint Inj: Motor Vehicle	5	0	0	5	3	0	0	3
Unint Inj: Other & Unspecified Transport	0	0	0	0	0	0	0	0
Unint Inj: Falls	0	0	0	0	0	0	0	0
Unint Inj: Firearms Discharge	1	0	1	0	0	0	0	0
Unint Inj: Drowning & Submersion	6	0	0	6	2	0	0	2
Unint Inj: Suffocation & Strangulation in Bed	108	0	10	98	57	0	7	50
Unint Inj: Other Suffocation & Strangulation	5	0	0	5	2	0	0	2
Unint Inj: Inhale/Ingest--Respiratory Tract Obstruction	7	0	0	7	2	0	0	2
Unint Inj: Smoke, Fire, Flames Exposure	1	0	0	1	1	0	0	1
Unint Inj: Poisoning & Noxious Substance Exposure	0	0	0	0	0	0	0	0
Unint Inj: Other & Unspecified	1	0	0	1	1	0	0	1
Homicide: Hanging, Strangulation, Suffocation	0	0	0	0	0	0	0	0
Homicide: Firearms Discharge	0	0	0	0	0	0	0	0
Homicide: Neglect, Abandonment, Maltreatment	4	0	1	3	2	0	1	1
Homicide: Other & Unspecified Means	12	0	0	12	5	0	0	5
Medical & Surgical Care Complications	2	0	0	2	1	0	0	1
Other External Causes	4	0	0	4	2	0	0	2

ICD-10 codes associated with each cause of death group are presented in Appendix 2.

TABLE F-7 (Cont.): RESIDENT INFANT, NEONATAL AND POST-NEONATAL DEATHS FROM SELECTED CAUSES, BY RACE, FLORIDA, 2017

	BLACK			POST NEO- NATAL	OTHER			POST NEO- NATAL
	NEONATAL		INFANT		NEONATAL		INFANT	
	<1 DAY	1-27 DAYS			<1 DAY	1-27 DAYS		
TOTAL	536	198	149	189	115	49	25	41
Intestinal Infectious Disease	0	0	0	0	0	0	0	0
Diarrhea & Gastroenteritis--Infectious Origin	4	0	0	4	1	0	0	1
Tuberculosis	0	0	0	0	0	0	0	0
Tetanus	0	0	0	0	0	0	0	0
Diphtheria	0	0	0	0	0	0	0	0
Whooping Cough	0	0	0	0	0	0	0	0
Meningococcal Infection	0	0	0	0	0	0	0	0
Septicemia	12	0	0	12	1	0	0	1
Congenital Syphilis	0	0	0	0	0	0	0	0
Gonococcal Infection	0	0	0	0	0	0	0	0
Acute Poliomyelitis	0	0	0	0	0	0	0	0
Varicella (Chicken Pox)	0	0	0	0	0	0	0	0
Measles	0	0	0	0	0	0	0	0
HIV Disease	0	0	0	0	0	0	0	0
Mumps	0	0	0	0	0	0	0	0
Other & Unspec Viral Diseases	2	0	0	2	0	0	0	0
Candidiasis	0	0	0	0	0	0	0	0
Malaria	0	0	0	0	0	0	0	0
Pneumocystosis	0	0	0	0	0	0	0	0
Other & Unspecified Infectious & Parasitic Diseases	1	1	0	0	0	0	0	0
Hodgkins Disease & Non-Hodgkins Lymphomas	0	0	0	0	0	0	0	0
Leukemia	0	0	0	0	0	0	0	0
Other & Unspecified Malignant Neoplasm	1	0	0	1	0	0	0	0
In Situ/Benign/Malignant Neoplasms Uncert/Unk Behavior	0	0	0	0	0	0	0	0
Anemias	0	0	0	0	0	0	0	0
Blood, Blood-Forming, Hemorrhagic Diseases	4	0	1	3	0	0	0	0
Disorders Involving Immune Mechanism	0	0	0	0	0	0	0	0
Short Stature	0	0	0	0	0	0	0	0
Nutritional Deficiencies	0	0	0	0	0	0	0	0
Cystic Fibrosis	0	0	0	0	0	0	0	0
Fluid/Electrolyte/Acid-Base/Volume Depletion Disorders	1	0	0	1	0	0	0	0
Other Endocrine, Nutritional, Metabolic Diseases	2	0	0	2	0	0	0	0
Meningitis	0	0	0	0	0	0	0	0
Infantile Spinal Muscular Atrophy, Type 1 (Werdnig-Hoffman)	0	0	0	0	0	0	0	0
Infantile Cerebral Palsy	0	0	0	0	0	0	0	0
Anoxic Brain Damage	0	0	0	0	0	0	0	0
Other Nervous System Diseases	4	0	1	3	0	0	0	0
Ear & Mastoid Process Diseases	0	0	0	0	0	0	0	0
Pulmonary Heart/Circulation Diseases	1	0	0	1	1	0	0	1
Pericarditis, Endocarditis, Myocarditis	0	0	0	0	0	0	0	0
Cardiomyopathy	5	0	2	3	0	0	0	0
Cardiac Arrest	0	0	0	0	0	0	0	0
Cerebrovascular Diseases	3	0	0	3	1	0	0	1
Other Circulatory System Diseases	6	0	1	5	2	0	0	2
Acute Upper Respiratory Infections	0	0	0	0	0	0	0	0
Influenza	0	0	0	0	0	0	0	0

TABLE F-7 (Cont.): RESIDENT INFANT, NEONATAL AND POST-NEONATAL DEATHS FROM SELECTED CAUSES, BY RACE, FLORIDA, 2017

	BLACK			POST NEO- NATAL	OTHER			POST NEO- NATAL
	NEONATAL		INFANT		NEONATAL		INFANT	
	<1 DAY	1-27 DAYS			<1 DAY	1-27 DAYS		
Pneumonia	2	0	0	2	2	0	0	2
Acute Bronchitis & Acute Bronchiolitis	0	0	0	0	0	0	0	0
Bronchitis, Chronic & Unspecified	0	0	0	0	0	0	0	0
Asthma	0	0	0	0	0	0	0	0
Pneumonitis Due to Solids & Liquids	0	0	0	0	0	0	0	0
Other & Unspecified Respiratory System Diseases	6	0	0	6	0	0	0	0
Gastritis, Duodenitis, Noninfective Enteritis/Colitis	0	0	0	0	0	0	0	0
Hernia Abdom Cavity & Intestinal Obstruct W/O Hernia	0	0	0	0	0	0	0	0
Other & Unspec Digestive System Disease	3	0	3	0	0	0	0	0
Renal Failure & Other Kidney Disorders	4	0	3	1	0	0	0	0
Other & Unspec Genitourinary System Dis	2	1	0	1	0	0	0	0
PERINATAL PERIOD CONDITIONS	270	167	94	9	64	42	19	3
Maternal Hypertensive Disorders	3	3	0	0	0	0	0	0
Maternal Conditions Unrelated Present Pregnancy	2	2	0	0	0	0	0	0
Incompetent Cervix	10	10	0	0	5	4	1	0
Premature Rupture of Membranes	18	16	2	0	5	5	0	0
Multiple Pregnancy	4	4	0	0	0	0	0	0
Maternal Complications of Pregnancy	6	6	0	0	0	0	0	0
Placenta Complications	8	7	1	0	7	7	0	0
Cord Complications	0	0	0	0	0	0	0	0
Chorioamnionitis	12	11	1	0	3	3	0	0
Other & Unspecified Membrane Abnormalities	0	0	0	0	0	0	0	0
Other Complications of Labor & Delivery	0	0	0	0	0	0	0	0
Noxious Influences Via Placenta or Breast Milk	5	5	0	0	0	0	0	0
Slow Fetal Growth & Fetal Malnutrition	2	1	1	0	0	0	0	0
Extreme Low Birth Weight or Extreme Immaturity	59	49	9	1	12	12	0	0
Other Low Birth Weight or Preterm	28	26	0	2	5	5	0	0
Long Gestation & High Birth Weight	0	0	0	0	0	0	0	0
Birth Trauma	0	0	0	0	0	0	0	0
Intrauterine Hypoxia	10	3	7	0	1	0	1	0
Birth Asphyxia	4	1	3	0	0	0	0	0
Respiratory Distress	12	5	7	0	1	0	1	0
Congenital Pneumonia	0	0	0	0	0	0	0	0
Neonatal Aspiration Syndromes	0	0	0	0	0	0	0	0
Interstitial Emphysema & Related Conditions	2	1	0	1	0	0	0	0
Pulmonary Hemorrhage	4	0	4	0	0	0	0	0
Chronic Respiratory Disease	2	0	0	2	1	0	0	1
Atelectasis	7	4	3	0	2	1	1	0
Other Respiratory Conditions	0	0	0	0	0	0	0	0
Bacterial Sepsis	14	1	13	0	7	2	5	0
Omphalitis With or Without Hemorrhage	0	0	0	0	0	0	0	0
All Other Infections	2	1	1	0	2	0	1	1
Neonatal Hemorrhage	8	0	8	0	2	0	2	0
Hemorrhagic Disease of Newborn	0	0	0	0	0	0	0	0
Hemolytic Dis Due to Isoimmunization/Perinat Jaundice	0	0	0	0	0	0	0	0
Hematological Disorders	0	0	0	0	0	0	0	0
Diabetes Mellitus, Maternal or Neonatal	0	0	0	0	0	0	0	0
Necrotizing Enterocolitis	10	0	10	0	3	0	2	1

TABLE F-7 (Cont.): RESIDENT INFANT, NEONATAL AND POST-NEONATAL DEATHS FROM SELECTED CAUSES, BY RACE, FLORIDA, 2017

	BLACK			POST NEO- NATAL	OTHER			POST NEO- NATAL
	NEONATAL		INFANT		NEONATAL		INFANT	
	<1 DAY	1-27 DAYS			<1 DAY	1-27 DAYS		
Hydrops Fetalis Not Due To Hemolytic Dis	1	0	0	1	0	0	0	0
Other Perinatal Conditions	37	11	24	2	8	3	5	0
CONGENITAL / CHROMOSOMAL ANOMALIES	91	29	36	26	18	7	6	5
Anencephaly & Similar Anomalies	5	3	2	0	1	1	0	0
Congenital Hydrocephalus	2	1	0	1	1	0	0	1
Spina Bifida	1	1	0	0	0	0	0	0
Other Cong Malf Nervous System	8	2	3	3	1	1	0	0
Congenital Malf of Heart	17	4	4	9	4	0	1	3
Other Congenital Malf of Circulatory Sys	1	0	1	0	0	0	0	0
Congenital Malf of Respiratory Sys	6	3	3	0	3	2	1	0
Congenital Anomalies of Digestive Sys	1	1	0	0	0	0	0	0
Congenital Malf of Genitourinary Sys	11	5	6	0	3	2	0	1
Congenital Malf of Musculoskeletal Sys	10	2	7	1	1	0	1	0
Downs Syndrome	2	0	1	1	0	0	0	0
Edwards Syndrome	9	3	3	3	3	0	3	0
Patau Syndrome	8	1	3	4	0	0	0	0
Other Congenital Malf	8	2	3	3	1	1	0	0
Other Chromosomal Abnorm	2	1	0	1	0	0	0	0
Sudden Infant Death Syndrome	29	0	0	29	5	0	0	5
Symptoms, Signs, Abn Clinical/Lab Findings	21	0	4	17	4	0	0	4
All Other Diseases	1	0	0	1	0	0	0	0
Unint Inj: Motor Vehicle	2	0	0	2	0	0	0	0
Unint Inj: Other & Unspecified Transport	0	0	0	0	0	0	0	0
Unint Inj: Falls	0	0	0	0	0	0	0	0
Unint Inj: Firearms Discharge	1	0	1	0	0	0	0	0
Unint Inj: Drowning & Submersion	2	0	0	2	2	0	0	2
Unint Inj: Suffocation & Strangulation in Bed	41	0	3	38	9	0	0	9
Unint Inj: Other Suffocation & Strangulation	2	0	0	2	1	0	0	1
Unint Inj: Inhale/Ingest--Respiratory Tract Obstruction	5	0	0	5	0	0	0	0
Unint Inj: Smoke, Fire, Flames Exposure	0	0	0	0	0	0	0	0
Unint Inj: Poisoning & Noxious Substance Exposure	0	0	0	0	0	0	0	0
Unint Inj: Other & Unspecified	0	0	0	0	0	0	0	0
Homicide: Hanging, Strangulation, Suffocation	0	0	0	0	0	0	0	0
Homicide: Firearms Discharge	0	0	0	0	0	0	0	0
Homicide: Neglect, Abandonment, Maltreatment	2	0	0	2	0	0	0	0
Homicide: Other & Unspecified Means	4	0	0	4	3	0	0	3
Medical & Surgical Care Complications	1	0	0	1	0	0	0	0
Other External Causes	1	0	0	1	1	0	0	1

ICD-10 codes associated with each cause of death group are presented in Appendix 2.