

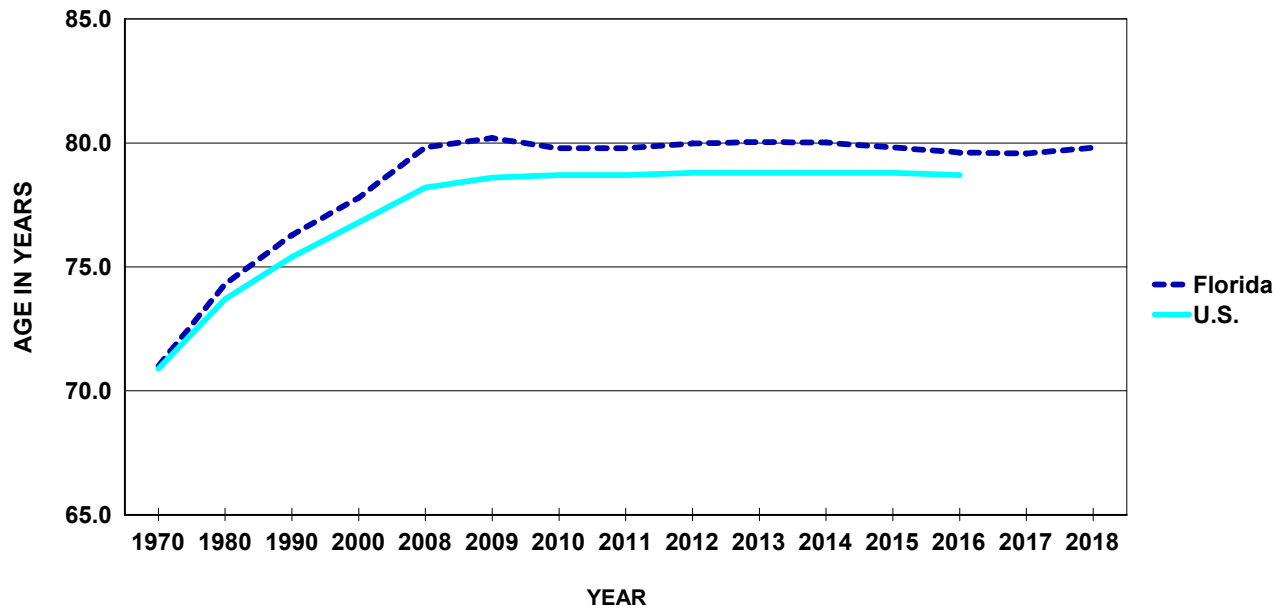
# Population

**CHART P-1: YEARS OF LIFE EXPECTANCY AT BIRTH, BY RACE, ETHNICITY AND GENDER, FOR FLORIDA RESIDENTS AND UNITED STATES TOTAL, CENSUS YEARS 1970-2000 AND 2008-2018**

YEAR	FLORIDA							UNITED STATES			
	TOTAL	WHITE <sup>1</sup>		BLACK <sup>1</sup>		HISPANIC <sup>2</sup>		TOTAL	WHITE <sup>1</sup>	BLACK <sup>1</sup>	HISPANIC <sup>2</sup>
		MALE	FEMALE	MALE	FEMALE	MALE	FEMALE				
1970	71.0	68.4	76.8	58.9	68.4	NA	NA	70.9	71.1	NA	NA
1980	74.3	71.2	79.4	63.2	72.8	NA	NA	73.7	74.4	68.0	NA
1990	76.3	73.5	81.1	64.4	73.8	NA	NA	75.4	76.1	69.1	NA
2000	77.8	75.5	81.5	69.6	75.7	NA	NA	76.8	77.3	71.8	NA
2008	79.8	77.2	83.1	73.2	79.6	79.9	85.9	78.2	78.5	74.3	80.8
2009	80.2	77.6	83.4	73.8	79.7	80.3	86.5	78.6	78.8	74.7	81.1
2010	79.8	77.4	82.9	74.3	79.8	81.1	86.5	78.7	78.9	75.1	81.2
2011	79.8	77.4	82.9	74.2	79.9	80.3	85.8	78.7	79.0	75.3	81.4
2012	80.0	77.7	82.9	74.5	80.5	80.5	85.6	78.8	79.1	75.5	81.6
2013	80.0	77.8	83.0	74.7	80.6	80.9	85.7	78.8	79.1	75.5	81.6
2014	80.0	77.6	83.0	75.1	80.8	80.5	86.1	78.8	79.0	75.6	81.8
2015	79.8	77.4	83.0	74.6	80.8	80.3	86.1	78.8	NA	NA	NA
2016	79.6	77.1	82.7	74.7	80.4	80.1	86.0	78.7	NA	NA	NA
2017	79.6	77.0	82.7	74.5	80.9	80.3	85.9	NA	NA	NA	NA
2018	79.8	77.4	82.8	74.7	80.7	80.8	86.6	NA	NA	NA	NA

1. Regardless of ethnicity.  
2. Regardless of race

**GRAPH P-1: YEARS OF LIFE EXPECTANCY AT BIRTH, FLORIDA AND UNITED STATES, CENSUS YEARS 1970-2000 AND 2008-2018**

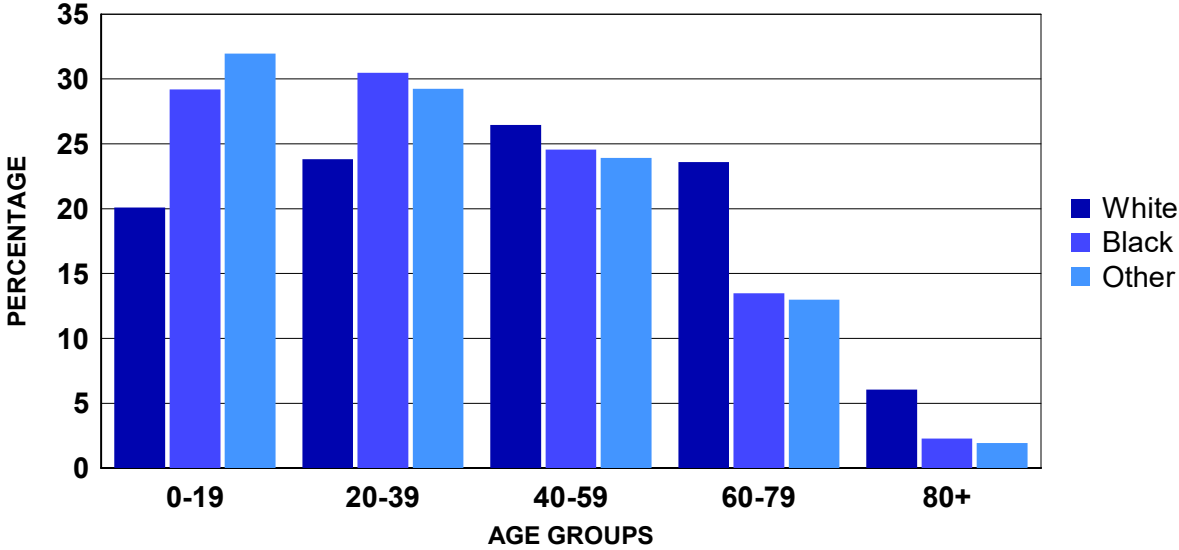


**CHART P-2: NATURAL INCREASE\* IN POPULATION,  
BY RACE, FLORIDA 2008-2018**

YEAR	TOTAL	WHITE	BLACK	OTHER
2008	60,944	17,521	33,076	9,870
2009	51,537	9,996	32,220	8,714
2010	42,010	1,891	30,938	8,243
2011	40,381	171	30,470	9,210
2012	37,105	-3,177	30,121	9,578
2013	35,180	-3,947	29,305	9,029
2014	34,867	-4,483	29,163	9,256
2015	32,785	-5,563	28,145	9,242
2016	27,782	-10,602	27,312	9,783
2017	20,226	-17,934	26,987	10,185
2018	16,047	-19,664	25,166	9,996

\*Resident Live Births minus Resident Deaths.

**GRAPH P-2: PERCENT DISTRIBUTION OF RACE-SPECIFIC POPULATION  
BY AGE GROUPS, FLORIDA, 2018**



**CHART P-3: RESIDENT MIDYEAR POPULATION ESTIMATES, BY AGE, RACE AND GENDER, FLORIDA, 2018**

AGE GROUP	TOTAL	WHITE			BLACK			OTHER		
		TOTAL	MALE	FEMALE	TOTAL	MALE	FEMALE	TOTAL	MALE	FEMALE
<b>TOTAL</b>	<b>20,957,705</b>	<b>16,219,736</b>	<b>7,965,761</b>	<b>8,253,975</b>	<b>3,549,464</b>	<b>1,709,720</b>	<b>1,839,744</b>	<b>1,188,505</b>	<b>568,812</b>	<b>619,693</b>
<1 <sup>1</sup>	216,673	154,642	79,442	75,200	47,817	24,175	23,642	14,214	7,291	6,923
1-4 <sup>2</sup>	921,248	630,576	323,406	307,170	206,151	104,798	101,353	84,521	43,054	41,467
5-9	1,150,878	790,257	404,264	385,993	260,904	132,100	128,804	99,717	50,719	48,998
10-14	1,180,476	828,504	424,792	403,712	257,524	130,488	127,036	94,448	47,702	46,746
15-19	1,202,971	852,323	437,874	414,449	263,846	134,113	129,733	86,802	43,495	43,307
20-24	1,269,099	900,757	463,862	436,895	279,737	142,153	137,584	88,605	44,359	44,246
25-29	1,422,495	1,028,760	527,867	500,893	301,990	150,676	151,314	91,745	46,013	45,732
30-34	1,321,189	979,008	501,550	477,458	257,183	124,997	132,186	84,998	40,522	44,476
35-39	1,280,609	955,348	483,150	472,198	243,179	116,154	127,025	82,082	38,281	43,801
40-44	1,237,176	937,175	470,198	466,977	221,323	103,921	117,402	78,678	36,360	42,318
45-49	1,347,356	1,052,050	525,726	526,324	219,612	103,466	116,146	75,694	35,091	40,603
50-54	1,418,340	1,129,607	556,693	572,914	220,365	104,126	116,239	68,368	31,404	36,964
55-59	1,445,806	1,173,644	567,093	606,551	210,589	97,950	112,639	61,573	27,404	34,169
60-64	1,346,058	1,112,010	521,078	590,932	179,175	80,958	98,217	54,873	23,866	31,007
65-69	1,252,201	1,069,327	498,044	571,283	137,462	61,016	76,446	45,412	19,598	25,814
70-74	1,081,705	952,609	444,963	507,646	96,352	41,903	54,449	32,744	14,681	18,063
75-79	777,582	690,863	318,809	372,054	65,600	27,689	37,911	21,119	9,564	11,555
80-84	533,041	477,701	215,117	262,584	42,630	16,572	26,058	12,710	5,591	7,119
85+	552,802	504,575	201,833	302,742	38,025	12,465	25,560	10,202	3,817	6,385

Source: The Florida Legislature, Office of Economic and Demographic Research, July 1 estimates or births and infant deaths from the Bureau of Vital Statistics.

1. The <1 age group is number of births minus infant deaths obtained when in-state births and infant deaths were finalized plus the number of out-of-state births minus infant deaths from the previous calendar year. When the estimate of individuals <1 in a county exceeds the 0-4 population estimate from the Office of Economic and Demographic Research for the county, then the county's total 0-4 population estimate is reallocated based on the proportion of individuals <1 in each race, ethnic, gender group in relation to the total number who are <1 in the county. A final adjustment may have been made to the <1 estimate to ensure that the sum of the <1, 1, 2, 3, and 4 age groups total to the county's 0-4 population estimate.

2. The 1-4 age group for each county is the Office of Economic and Demographic Research 0-4 age group estimate minus the <1 age group estimate described in the previous footnote. A final adjustment may have been made to the 1-4 estimate to ensure that the sum of the <1, 1, 2, 3, and 4 age groups total to the county's 0-4 population estimate.

**CHART P-4: RESIDENT MIDYEAR POPULATION ESTIMATES, BY RACE AND GENDER, FLORIDA,  
CENSUS YEARS 1970-1990 AND 1999-2018**

YEAR	TOTAL	WHITE			BLACK			OTHER		
		TOTAL	MALE	FEMALE	TOTAL	MALE	FEMALE	TOTAL	MALE	FEMALE
1970	6,789,438	5,719,343	2,762,779	2,956,564	1,041,651	498,695	542,956	28,444	14,092	14,352
1980	9,840,317	8,389,968	4,031,868	4,358,100	1,366,808	649,110	717,698	83,541	39,070	44,471
1990	13,029,114	11,040,436	5,358,366	5,682,070	1,790,653	854,838	935,815	198,025	94,610	103,415
1999	15,679,606	12,903,840	6,313,637	6,590,203	2,412,203	1,160,236	1,251,967	363,563	173,549	190,014
2000	16,074,896	13,200,518	6,461,066	6,739,452	2,487,562	1,196,463	1,291,099	386,816	186,108	200,708
2001	16,384,860	13,308,708	6,517,402	6,791,306	2,506,652	1,203,991	1,302,661	569,500	274,650	294,850
2002	16,718,033	13,530,669	6,628,652	6,902,017	2,577,689	1,238,065	1,339,624	609,675	294,751	314,924
2003	17,074,368	13,771,781	6,751,592	7,020,189	2,650,445	1,273,337	1,377,108	652,142	313,870	338,272
2004	17,476,489	14,047,501	6,893,166	7,154,335	2,732,636	1,312,932	1,419,704	696,352	334,256	362,096
2005	17,876,663	14,314,124	7,027,973	7,286,151	2,818,056	1,353,355	1,464,701	744,483	357,294	387,189
2006	18,237,596	14,539,520	7,142,191	7,397,329	2,904,545	1,395,616	1,508,929	793,531	381,434	412,097
2007	18,500,958	14,695,237	7,223,143	7,472,094	2,970,749	1,428,525	1,542,224	834,972	400,760	434,212
2008	18,636,837	14,747,636	7,244,354	7,503,282	3,019,761	1,452,221	1,567,540	869,440	416,260	453,180
2009	18,711,844	14,762,048	7,248,318	7,513,730	3,049,814	1,466,943	1,582,871	899,982	431,386	468,596
2010	18,820,278	14,815,082	7,276,743	7,538,339	3,083,154	1,483,295	1,599,859	922,042	442,190	479,852
2011	18,941,742	14,910,321	7,321,404	7,588,917	3,106,365	1,494,849	1,611,516	925,056	442,904	482,152
2012	19,118,938	14,997,292	7,364,269	7,633,023	3,165,062	1,524,688	1,640,374	956,584	457,994	498,590
2013	19,314,396	15,106,653	7,418,152	7,688,501	3,219,386	1,549,521	1,669,865	988,357	473,154	515,203
2014	19,579,871	15,278,924	7,504,007	7,774,917	3,278,527	1,578,356	1,700,171	1,022,420	489,472	532,948
2015	19,897,762	15,492,935	7,608,260	7,884,675	3,344,939	1,610,114	1,734,825	1,059,888	507,150	552,738
2016	20,231,092	15,722,428	7,719,778	8,002,650	3,408,734	1,641,187	1,767,547	1,099,930	526,199	573,731
2017	20,555,728	15,944,707	7,826,179	8,118,528	3,470,100	1,670,734	1,799,366	1,140,921	546,006	594,915
2018	20,957,705	16,219,736	7,965,761	8,253,975	3,549,464	1,709,720	1,839,744	1,188,505	568,812	619,693

Source: The Florida Legislature, Office of Economic and Demographic Research

**CHART P-5: RESIDENT MIDYEAR POPULATION ESTIMATES, BY AGE GROUPS, FLORIDA,  
CENSUS YEARS 1970-1990 AND 1999-2018**

YEAR	AGE GROUP											
	TOTAL	<1 <sup>1</sup>	1-4 <sup>2</sup>	5-14	15-24	25-34	35-44	45-54	55-64	65-74	75-84	85+
1970	6,789,438	112,627	388,547	1,248,728	1,073,293	761,761	746,867	761,987	706,262	646,681	285,116	57,569
1980	9,840,317	129,893	448,565	1,310,351	1,630,632	1,438,555	1,051,361	994,915	1,131,187	1,067,585	517,689	119,584
1990	13,029,114	197,234	687,549	1,577,347	1,679,321	2,125,870	1,830,009	1,291,371	1,266,366	1,372,242	792,709	209,096
1999	15,679,606	195,521	737,786	2,057,884	1,893,078	2,071,054	2,445,284	1,995,809	1,508,272	1,445,428	1,006,711	322,779
2000	16,074,896	202,607	752,066	2,094,766	1,961,818	2,086,402	2,488,959	2,090,243	1,579,582	1,455,587	1,029,871	332,995
2001	16,384,860	204,733	787,332	2,110,339	2,040,630	2,083,035	2,478,306	2,163,930	1,665,444	1,463,755	1,048,642	338,714
2002	16,718,033	204,486	781,008	2,120,022	2,086,329	2,071,620	2,490,536	2,267,322	1,758,361	1,489,751	1,085,544	363,054
2003	17,074,368	211,257	808,356	2,171,906	2,140,399	2,120,794	2,541,604	2,304,679	1,790,311	1,517,846	1,103,047	364,169
2004	17,476,489	220,922	840,464	2,223,491	2,291,411	2,114,627	2,515,128	2,419,314	1,925,093	1,433,804	1,071,348	420,887
2005	17,876,663	226,176	848,666	2,271,019	2,323,896	2,169,191	2,559,269	2,488,666	1,976,581	1,460,734	1,142,811	409,654
2006	18,237,596	236,579	857,820	2,296,310	2,366,202	2,221,896	2,544,341	2,551,058	2,067,667	1,513,436	1,149,747	432,540
2007	18,500,958	237,193	871,978	2,313,360	2,401,336	2,259,101	2,525,432	2,601,729	2,142,955	1,546,842	1,150,763	450,269
2008	18,636,837	230,660	905,284	2,306,432	2,410,214	2,272,113	2,481,650	2,627,769	2,198,837	1,565,961	1,148,391	489,526
2009	18,711,844	220,233	923,983	2,294,240	2,415,671	2,281,287	2,433,459	2,652,212	2,253,825	1,584,274	1,141,403	511,257
2010	18,820,278	224,098	834,824	2,202,794	2,437,270	2,272,695	2,421,253	2,744,741	2,368,230	1,760,445	1,114,335	439,593
2011	18,941,742	210,081	866,725	2,221,303	2,473,323	2,312,891	2,437,668	2,758,848	2,364,888	1,748,471	1,106,676	440,868
2012	19,118,938	209,568	864,252	2,220,419	2,483,701	2,358,439	2,412,827	2,761,736	2,440,747	1,781,802	1,118,070	467,377
2013	19,314,396	211,853	861,000	2,230,250	2,483,104	2,405,697	2,403,414	2,745,448	2,460,721	1,892,949	1,133,537	486,423
2014	19,579,871	217,037	856,486	2,247,663	2,490,275	2,462,027	2,410,595	2,737,635	2,508,083	1,987,603	1,156,350	506,117
2015	19,897,762	221,333	868,873	2,260,954	2,487,272	2,532,191	2,424,296	2,736,706	2,572,268	2,082,092	1,187,221	524,556
2016	20,231,092	220,904	889,872	2,272,126	2,474,982	2,608,186	2,443,227	2,742,649	2,645,654	2,175,153	1,218,261	540,078
2017	20,555,728	219,916	904,104	2,292,076	2,458,358	2,679,629	2,460,078	2,749,785	2,717,927	2,266,620	1,254,557	552,678
2018	20,957,705	216,673	921,248	2,331,354	2,472,070	2,743,684	2,517,785	2,765,696	2,791,864	2,333,906	1,310,623	552,802

Source: The Florida Legislature, Office of Economic and Demographic Research, July 1 estimates or births and infant deaths from the Bureau of Vital Statistics.  
 1. The <1 age group is number of births minus infant deaths obtained when in-state births and infant deaths were finalized plus the number of out-of-state births minus infant deaths from the previous calendar year. When the estimate of individuals <1 in a county exceeds the 0-4 population estimate from the Office of Economic and Demographic Research for the county, then the county's total 0-4 population estimate is reallocated based on the proportion of individuals <1 in each race, ethnic, gender group in relation to the total number who are <1 in the county. A final adjustment may have been made to the <1 estimate to ensure that the sum of the <1, 1, 2, 3, and 4 age groups total to the county's 0-4 population estimate.  
 2. The 1-4 age group for each county is the Office of Economic and Demographic Research 0-4 age group estimate minus the <1 age group estimate described in the previous footnote. A final adjustment may have been made to the 1-4 estimate to ensure that the sum of the <1, 1, 2, 3, and 4 age groups total to the county's 0-4 population estimate.

TABLE P-1: RESIDENT MIDYEAR POPULATION ESTIMATES, BY RACE, ETHNICITY AND COUNTY, FLORIDA, 2018

	TOTAL	RACE			ETHNICITY	
		WHITE	BLACK	OTHER	NON-HISPANIC	HISPANIC
FLORIDA	20,957,705	16,219,736	3,549,464	1,188,505	15,564,588	5,393,117
ALACHUA	263,753	184,669	54,359	24,725	237,776	25,977
BAKER	27,488	22,874	3,819	795	26,780	708
BAY	182,218	149,529	20,877	11,812	170,201	12,017
BRADFORD	28,083	21,794	5,407	882	26,943	1,140
BREVARD	584,050	487,122	62,544	34,384	523,349	60,701
BROWARD	1,903,210	1,208,680	569,029	125,501	1,338,868	564,342
CALHOUN	15,315	12,596	2,022	697	14,420	895
CHARLOTTE	175,413	158,595	10,633	6,185	162,836	12,577
CITRUS	145,164	135,267	4,478	5,419	136,896	8,268
CLAY	213,565	173,321	25,212	15,032	192,433	21,132
COLLIER	367,471	328,252	27,216	12,003	265,439	102,032
COLUMBIA	69,566	54,363	12,610	2,593	65,229	4,337
MIAMI-DADE	2,804,160	2,203,398	511,172	89,590	880,974	1,923,186
DESOTO	35,940	30,125	4,624	1,191	24,891	11,049
DIXIE	16,767	14,698	1,632	437	16,040	727
DUVAL	954,454	582,289	290,928	81,237	862,293	92,161
ESCAMBIA	317,051	218,746	73,591	24,714	299,155	17,896
FLAGLER	108,481	91,050	11,813	5,618	97,133	11,348
FRANKLIN	12,360	10,303	1,652	405	11,710	650
GADSDEN	48,173	20,044	26,934	1,195	43,194	4,979
GILCHRIST	17,578	16,098	933	547	16,531	1,047
GLADES	13,193	10,412	1,819	962	10,454	2,739
GULF	16,235	12,951	2,795	489	15,500	735
HAMILTON	14,706	9,282	4,869	555	13,298	1,408
HARDEE	27,436	24,265	2,026	1,145	15,434	12,002
HENDRY	39,682	32,939	4,946	1,797	18,569	21,113
HERNANDO	185,421	167,085	10,881	7,455	160,737	24,684
HIGHLANDS	103,317	88,247	10,928	4,142	82,861	20,456
HILLSBOROUGH	1,419,285	1,057,746	252,715	108,824	1,013,426	405,859
HOLMES	20,404	18,184	1,390	830	19,827	577
INDIAN RIVER	152,079	132,264	14,382	5,433	133,070	19,009
JACKSON	50,689	35,170	13,606	1,913	48,270	2,419
JEFFERSON	14,725	9,224	5,127	374	14,143	582
LAFAYETTE	8,367	6,967	1,173	227	7,284	1,083
LAKE	342,356	286,688	38,141	17,527	289,560	52,796
LEE	721,053	626,546	65,339	29,168	568,078	152,975
LEON	290,223	180,121	91,847	18,255	271,533	18,690
LEVY	41,550	36,220	3,951	1,379	38,115	3,435
LIBERTY	8,781	6,825	1,675	281	8,206	575
MADISON	19,420	11,525	7,390	505	18,346	1,074
MANATEE	381,071	328,558	35,065	17,448	319,045	62,026
MARION	355,325	292,265	47,711	15,349	308,535	46,790
MARTIN	155,705	140,746	8,726	6,233	134,273	21,432
MONROE	76,534	68,293	5,305	2,936	57,771	18,763
NASSAU	83,125	75,428	5,055	2,642	79,639	3,486
OKALOOSA	198,409	161,593	20,220	16,596	180,112	18,297
OKEECHOBEE	41,492	36,125	3,688	1,679	30,997	10,495
ORANGE	1,370,447	932,625	311,994	125,828	939,994	430,453
OSCEOLA	360,426	286,471	49,332	24,623	166,837	193,589
PALM BEACH	1,442,281	1,082,282	282,771	77,228	1,120,539	321,742
PASCO	518,639	458,395	31,974	28,270	440,222	78,417
PINELLAS	971,022	802,700	107,430	60,892	877,042	93,980
POLK	681,691	539,054	109,338	33,299	529,645	152,046
PUTNAM	73,422	59,063	11,967	2,392	65,963	7,459
SAINT JOHNS	241,545	215,047	13,266	13,232	224,822	16,723
SAINT LUCIE	304,743	226,754	63,121	14,868	246,775	57,968
SANTA ROSA	175,552	153,005	11,292	11,255	165,823	9,729
SARASOTA	415,896	381,015	19,830	15,051	377,908	37,988
SEMINOLE	463,627	368,123	59,032	36,472	364,611	99,016
SUMTER	125,779	113,443	9,395	2,941	118,639	7,140
SUWANNEE	45,123	37,760	6,032	1,331	40,973	4,150
TAYLOR	22,258	17,010	4,408	840	21,314	944
UNION	15,966	11,772	3,737	457	15,070	896
VOLUSIA	532,926	447,680	60,506	24,740	459,128	73,798
WAKULLA	32,350	26,851	4,351	1,148	31,164	1,186
WALTON	67,926	60,835	3,669	3,422	63,660	4,266
WASHINGTON	25,243	20,369	3,764	1,110	24,285	958

