

Fetal and Infant Deaths

CHART F-1: RESIDENT FETAL DEATHS AND RATES PER 1,000 LIVE BIRTHS AND FETAL DEATHS, BY RACE*, FLORIDA AND UNITED STATES, CENSUS YEARS 1970-2000 AND 2009-2019

YEAR	NUMBER OF FETAL DEATHS - FL				RATES PER 1,000 - FL			RATES - U.S.		
	TOTAL	WHITE	BLACK	OTHER	TOTAL	WHITE	BLACK	TOTAL	WHITE	BLACK
1970	1,708	1,034	608	7	14.6	11.8	21.6	14.0	12.3	23.2
1980	1,356	848	476	15	10.2	8.6	14.2	9.1	8.1	14.7
1990	1,811	1,071	695	25	9.0	7.1	14.8	7.5	6.4	13.3
2000	1,675	954	667	37	8.1	6.3	13.9	6.6	5.6	12.4
2009	1,569	904	592	63	7.0	5.6	11.6	6.0	NA	NA
2010	1,551	822	645	79	7.2	5.3	12.9	6.0	NA	NA
2011	1,558	832	641	76	7.3	5.4	13.0	6.1	NA	NA
2012	1,530	822	626	77	7.1	5.4	12.6	6.1	NA	NA
2013	1,533	869	579	81	7.1	5.6	11.7	6.0	NA	NA
2014	1,576	893	587	90	7.1	5.7	11.8	NA	NA	NA
2015	1,541	831	620	83	6.8	5.1	12.5	NA	NA	NA
2016	1,548	828	612	94	6.8	5.1	12.2	NA	NA	NA
2017	1,553	823	627	83	6.9	5.2	12.4	NA	NA	NA
2018	1,495	826	554	83	6.7	5.2	11.3	NA	NA	NA
2019	1,515	814	559	102	6.8	5.2	11.5	NA	NA	NA

*Fetal deaths and live births based on the race of the mother.

GRAPH F-1: RESIDENT FETAL DEATH RATES PER 1,000 LIVE BIRTHS AND FETAL DEATHS, BY RACE OF MOTHER, FLORIDA, 2009-2019

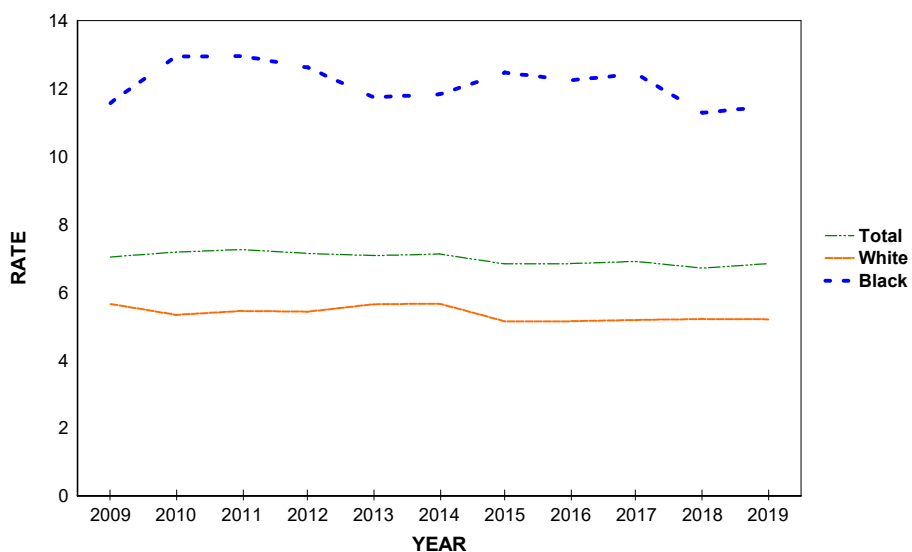


CHART F-2: RESIDENT NEONATAL DEATHS AND RATES PER 1,000 LIVE BIRTHS, BY RACE, FLORIDA AND UNITED STATES, CENSUS YEARS 1970-2000 AND 2009-2019

YEAR	NUMBER OF NEONATAL DEATHS - FL ¹				RATES - FL ¹			RATES - U.S.		
	TOTAL	WHITE	BLACK	OTHER	TOTAL	WHITE	BLACK	TOTAL	WHITE	BLACK
1970	1,847	1,198	636	11	16.0	13.8	23.1	15.1	13.8	22.8
1980	1,282	791	487	3	9.7	8.1	14.7	8.5	7.4	14.6
1990	1,227	742	476	8	6.2	5.0	10.3	5.9	4.8	11.6
2000	925	526	384	13	4.5	3.5	8.1	4.6	3.8	9.4
2009	996	513	438	42	4.5	3.2	8.7	4.2	3.5	8.2
2010	929	497	385	46	4.3	3.2	7.8	4.1	3.5	7.5
2011	915	465	401	46	4.3	3.1	8.2	4.1	3.5	7.5
2012	826	457	321	47	3.9	3.0	6.6	4.0	3.5	7.3
2013	859	458	341	57	4.0	3.0	7.0	4.0	3.5	7.4
2014	893	463	363	62	4.1	2.9	7.4	3.9	3.4	7.3
2015	984	499	394	84	4.4	3.1	8.0	3.9	NA	NA
2016	929	469	384	69	4.1	2.9	7.8	3.9	NA	NA
2017	900	473	347	74	4.0	3.0	7.0	3.8	NA	NA
2018	892	467	352	67	4.0	3.0	7.2	NA	NA	NA
2019	924	479	358	76	4.2	3.1	7.4	NA	NA	NA

1. Neonatal deaths based on race of decedent, live births based on race of mother.

GRAPH F-2: RESIDENT NEONATAL DEATH RATES PER 1,000 LIVE BIRTHS, BY RACE, FLORIDA AND UNITED STATES, 2009-2019

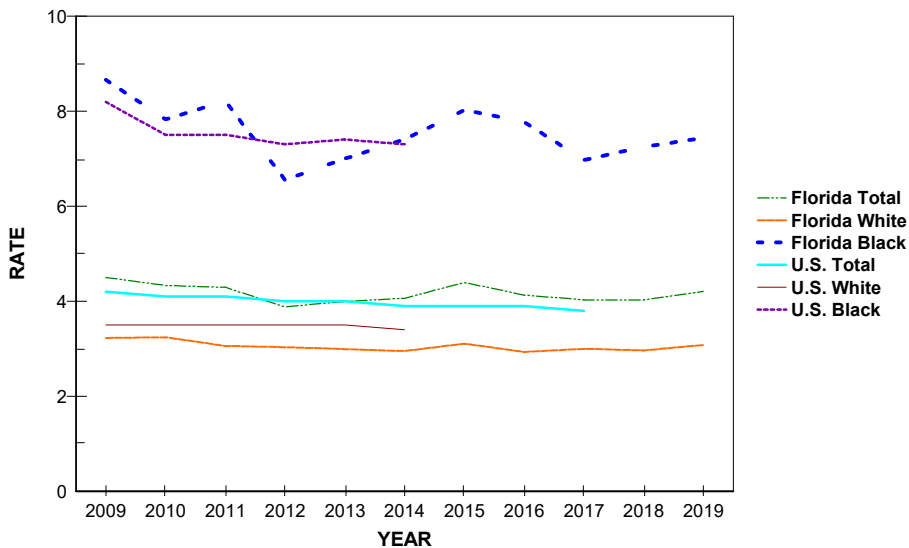


CHART F-3: RESIDENT INFANT DEATHS AND RATES PER 1,000 LIVE BIRTHS, BY RACE, FLORIDA AND UNITED STATES, CENSUS YEARS 1970-2000 AND 2009-2019

YEAR	NUMBER OF INFANT DEATHS - FL ¹				RATES - FL ¹			RATE - U.S.		
	TOTAL	WHITE	BLACK	OTHER	TOTAL	WHITE	BLACK	TOTAL	WHITE	BLACK
1970	2,469	1,538	918	11	21.4	17.7	33.3	20.0	17.8	32.7
1980	1,918	1,137	774	6	14.6	11.7	23.4	12.6	10.9	22.1
1990	1,912	1,123	775	12	9.6	7.5	16.7	9.2	7.6	18.0
2000	1,423	810	594	17	7.0	5.4	12.6	6.9	5.7	14.1
2009	1,525	780	667	75	6.9	4.9	13.2	6.4	5.3	12.6
2010	1,400	750	580	69	6.5	4.9	11.8	6.2	5.2	11.6
2011	1,372	698	584	86	6.4	4.6	12.0	6.1	5.1	11.5
2012	1,285	687	523	73	6.0	4.6	10.7	6.0	5.1	11.2
2013	1,318	707	517	90	6.1	4.6	10.6	6.0	5.1	11.2
2014	1,327	688	538	95	6.0	4.4	11.0	5.8	4.9	11.0
2015	1,400	711	558	124	6.2	4.4	11.4	5.9	NA	NA
2016	1,380	694	575	102	6.1	4.3	11.6	5.9	NA	NA
2017	1,355	696	536	115	6.1	4.4	10.8	5.8	NA	NA
2018	1,334	677	547	103	6.0	4.3	11.3	NA	NA	NA
2019	1,328	682	524	110	6.0	4.4	10.9	NA	NA	NA

1. Infant deaths based on race of decedent, live births based on race of mother.

GRAPH F-3: RESIDENT INFANT DEATH RATES PER 1,000 LIVE BIRTHS, BY RACE, FLORIDA AND UNITED STATES, 2009-2019

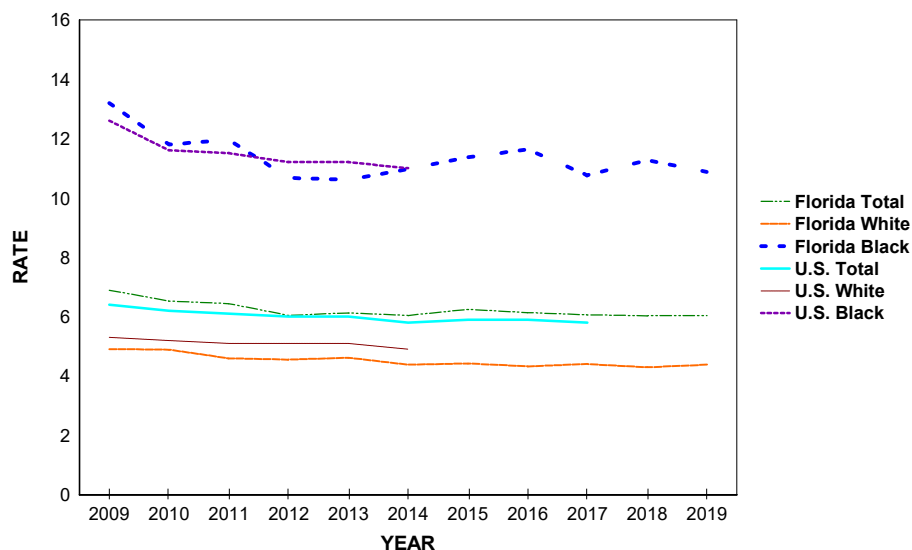


TABLE F-1: RESIDENT AND RECORDED FETAL DEATHS (OF 20 OR MORE WEEKS GESTATION) AND RATES PER 1,000 LIVE BIRTHS AND FETAL DEATHS, BY RACE OF MOTHER, BY COUNTY, FLORIDA, 2019

	RESIDENT FETAL DEATHS					RATES		
	NUMBERS					TOTAL	WHITE	BLACK
	TOTAL	WHITE	BLACK	OTHER	UNK			
FLORIDA	1515	814	559	102	40	6.8	5.2	11.5
ALACHUA	22	6	12	4	0	8.1	3.8	14.6
BAKER	3	2	1	0	0	8.2	6.5	23.8
BAY	13	9	4	0	0	6.5	6.3	12.6
BRADFORD	0	0	0	0	0	0.0	0.0	0.0
BREVARD	31	19	9	3	0	5.9	4.7	11.2
BROWARD	162	50	78	16	18	7.4	4.1	9.7
CALHOUN	0	0	0	0	0	0.0	0.0	0.0
CHARLOTTE	4	4	0	0	0	4.2	4.8	0.0
CITRUS	7	5	1	1	0	6.8	5.4	23.3
CLAY	17	11	4	1	1	7.5	6.2	12.4
COLLIER	15	12	3	0	0	4.8	4.7	8.0
COLUMBIA	7	4	3	0	0	9.0	7.0	18.1
MIAMI-DADE	202	89	92	18	3	6.6	3.7	16.4
DESOTO	5	5	0	0	0	12.3	15.2	0.0
DIXIE	2	2	0	0	0	12.0	13.4	0.0
DUVAL	97	38	52	4	3	7.4	5.4	11.0
ESCAMBIA	27	10	12	4	1	6.9	4.2	10.0
FLAGLER	4	3	1	0	0	4.7	4.5	8.6
FRANKLIN	1	1	0	0	0	9.7	10.5	0.0
GADSDEN	6	2	3	1	0	11.8	11.2	9.3
GILCHRIST	2	2	0	0	0	9.4	10.1	0.0
GLADES	2	1	1	0	0	35.7	23.8	90.9
GULF	0	0	0	0	0	0.0	0.0	0.0
HAMILTON	1	0	1	0	0	6.0	0.0	16.1
HARDEE	0	0	0	0	0	0.0	0.0	0.0
HENDRY	4	1	2	1	0	6.5	1.9	23.3
HERNANDO	15	13	1	1	0	9.5	9.4	9.6
HIGHLANDS	10	8	2	0	0	11.8	11.9	14.4
HILLSBOROUGH	110	65	34	9	2	6.4	5.5	9.0
HOLMES	0	0	0	0	0	0.0	0.0	0.0
INDIAN RIVER	4	2	1	0	1	3.2	2.1	4.7
JACKSON	6	3	3	0	0	12.6	9.0	25.0
JEFFERSON	3	1	2	0	0	25.0	15.4	37.0
LAFAYETTE	0	0	0	0	0	0.0	0.0	0.0
LAKE	11	7	3	1	0	3.2	2.6	5.8
LEE	42	21	17	4	0	6.0	3.7	15.8
LEON	9	4	4	1	0	3.0	2.6	3.1
LEVY	3	2	1	0	0	6.8	5.5	17.5
LIBERTY	0	0	0	0	0	0.0	0.0	0.0
MADISON	4	1	3	0	0	17.9	7.9	32.3
MANATEE	24	19	5	0	0	6.8	7.2	10.3
MARION	37	24	9	2	2	10.3	8.8	12.7
MARTIN	4	4	0	0	0	3.3	4.3	0.0
MONROE	5	3	0	1	1	7.6	5.5	0.0
NASSAU	5	4	1	0	0	5.9	5.2	20.4
OKALOOSA	16	14	2	0	0	5.9	6.5	6.4
OKEECHOBEE	2	0	1	1	0	4.0	0.0	37.0
ORANGE	124	65	52	4	3	7.4	6.0	12.3
OSCEOLA	30	23	4	2	1	6.7	6.4	7.8
PALM BEACH	97	46	43	7	1	6.5	4.8	10.0
PASCO	29	20	6	1	2	5.7	4.6	14.7
PINELLAS	55	30	21	4	0	6.9	5.3	14.0
POLK	63	35	25	3	0	7.6	5.7	14.7
PUTNAM	14	11	3	0	0	17.0	18.3	15.7
SAINT JOHNS	10	8	1	1	0	4.5	4.3	6.7
SAINT LUCIE	24	10	13	1	0	7.7	4.9	14.0
SANTA ROSA	11	8	2	1	0	5.6	4.7	17.7
SARASOTA	13	12	1	0	0	4.5	4.9	4.1
SEMINOLE	39	26	10	2	1	8.3	7.8	13.2
SUMTER	5	4	1	0	0	10.8	11.1	12.3
SUWANNEE	4	4	0	0	0	8.9	10.7	0.0
TAYLOR	0	0	0	0	0	0.0	0.0	0.0
UNION	2	1	1	0	0	12.9	7.8	43.5
VOLUSIA	33	24	7	2	0	6.8	6.4	8.5
WAKULLA	4	4	0	0	0	12.9	14.4	0.0
WALTON	9	8	0	1	0	10.3	10.4	0.0
WASHINGTON	5	4	1	0	0	17.0	15.9	33.3

TABLE F-1 (Cont.): RESIDENT AND RECORDED FETAL DEATHS (OF 20 OR MORE WEEKS GESTATION) AND RATES PER 1,000 LIVE BIRTHS AND FETAL DEATHS, BY RACE OF MOTHER, BY COUNTY, FLORIDA, 2019

	RECORDED FETAL DEATHS					RATES		
	NUMBERS					TOTAL	WHITE	BLACK
	TOTAL	WHITE	BLACK	OTHER	UNK			
FLORIDA	1557	836	569	103	49	7.0	5.3	11.7
ALACHUA	54	26	23	5	0	8.8	6.0	17.3
BAKER	0	0	0	0	0	0.0	0.0	----
BAY	21	15	6	0	0	8.5	8.3	15.5
BRADFORD	0	0	0	0	0	0.0	0.0	----
BREVARD	26	16	8	2	0	5.2	4.1	10.4
BROWARD	190	65	89	16	20	8.0	5.0	9.9
CALHOUN	0	0	0	0	0	----	----	----
CHARLOTTE	5	5	0	0	0	5.5	6.6	0.0
CITRUS	7	5	1	1	0	9.4	7.4	43.5
CLAY	20	13	5	0	2	7.9	7.3	8.2
COLLIER	17	13	3	0	1	4.9	4.5	7.9
COLUMBIA	5	4	1	0	0	8.7	10.1	6.5
MIAMI-DADE	190	85	84	17	4	6.9	3.8	18.9
DESOTO	0	0	0	0	0	0.0	0.0	----
DIXIE	0	0	0	0	0	0.0	0.0	----
DUVAL	114	49	56	6	3	7.6	5.4	12.2
ESCAMBIA	44	25	12	5	2	7.6	6.1	9.2
FLAGLER	0	0	0	0	0	0.0	0.0	0.0
FRANKLIN	0	0	0	0	0	0.0	0.0	----
GADSDEN	0	0	0	0	0	0.0	0.0	0.0
GILCHRIST	0	0	0	0	0	----	----	----
GLADES	0	0	0	0	0	----	----	----
GULF	0	0	0	0	0	0.0	0.0	----
HAMILTON	0	0	0	0	0	0.0	----	0.0
HARDEE	0	0	0	0	0	----	----	----
HENDRY	1	1	0	0	0	142.9	166.7	----
HERNANDO	13	11	1	1	0	7.0	6.7	8.9
HIGHLANDS	7	6	1	0	0	6.8	7.1	7.1
HILLSBOROUGH	135	84	38	11	2	6.9	6.1	9.1
HOLMES	0	0	0	0	0	0.0	0.0	----
INDIAN RIVER	4	2	1	0	1	3.8	2.6	5.3
JACKSON	3	1	2	0	0	8.1	3.8	26.0
JEFFERSON	0	0	0	0	0	0.0	----	0.0
LAFAYETTE	0	0	0	0	0	----	----	----
LAKE	10	5	2	1	2	3.9	2.6	4.5
LEE	47	24	19	4	0	6.6	4.1	17.5
LEON	27	13	12	2	0	5.9	5.2	6.4
LEVY	0	0	0	0	0	0.0	0.0	0.0
LIBERTY	0	0	0	0	0	----	----	----
MADISON	1	1	0	0	0	125.0	166.7	0.0
MANATEE	17	14	3	0	0	7.3	8.2	10.5
MARION	25	19	5	1	0	9.7	9.9	9.1
MARTIN	3	1	1	1	0	4.9	2.4	18.2
MONROE	3	3	0	0	0	6.8	8.8	0.0
NASSAU	0	0	0	0	0	0.0	0.0	0.0
OKALOOSA	15	12	2	1	0	7.3	7.7	8.5
OKEECHOBEE	0	0	0	0	0	0.0	0.0	----
ORANGE	168	98	57	8	5	7.5	6.4	11.7
OSCEOLA	33	26	5	2	0	7.0	7.0	8.7
PALM BEACH	110	50	48	10	2	6.3	4.4	10.0
PASCO	18	13	4	0	1	6.6	5.8	17.4
PINELLAS	64	35	24	4	1	7.1	5.4	15.5
POLK	43	19	23	1	0	6.8	4.1	17.9
PUTNAM	3	3	0	0	0	10.7	16.0	0.0
SAINT JOHNS	7	7	0	0	0	4.5	5.5	0.0
SAINT LUCIE	24	12	11	1	0	7.0	5.1	12.3
SANTA ROSA	2	0	2	0	0	5.0	0.0	50.0
SARASOTA	21	17	2	0	2	5.0	4.8	4.6
SEMINOLE	26	14	10	2	0	7.5	5.7	14.9
SUMTER	0	0	0	0	0	0.0	0.0	----
SUWANNEE	0	0	0	0	0	0.0	0.0	----
TAYLOR	0	0	0	0	0	0.0	0.0	0.0
UNION	0	0	0	0	0	0.0	0.0	----
VOLUSIA	29	19	8	1	1	7.4	6.4	11.4
WAKULLA	0	0	0	0	0	0.0	0.0	----
WALTON	5	5	0	0	0	3.6	4.1	0.0
WASHINGTON	0	0	0	0	0	0.0	0.0	----

---- Indicates that no fetal deaths nor live births occurred for the race group in the county, therefore a rate could not be calculated.

TABLE F-2: RESIDENT FETAL DEATHS AND RATE PER 1,000 LIVE BIRTHS AND FETAL DEATHS BY HISPANIC OR HAITIAN ORIGIN OF MOTHER, BY COUNTY, FLORIDA, 2019

	NUMBERS									RATE	
	HISPANIC ORIGIN								NON-HISPANIC/ NON-HAITIAN	UNK	TOTAL HISPANIC
	TOTAL	TOTAL HISPANIC	MEXICAN	PUERTO RICAN	CUBAN	OTHER/UNK HISPANIC	HAITIAN				
FLORIDA	1,515	389	61	105	74	149	112	931	83	5.7	
ALACHUA	22	1	0	0	0	1	0	20	1	3.6	
BAKER	3	0	0	0	0	0	0	3	0	0.0	
BAY	13	1	0	1	0	0	0	12	0	5.0	
BRADFORD	0	0	0	0	0	0	0	0	0	0.0	
BREVARD	31	5	2	2	0	1	0	25	1	6.9	
BROWARD	162	37	1	9	4	23	24	82	19	5.2	
CALHOUN	0	0	0	0	0	0	0	0	0	0.0	
CHARLOTTE	4	0	0	0	0	0	0	4	0	0.0	
CITRUS	7	0	0	0	0	0	0	7	0	0.0	
CLAY	17	2	1	0	0	1	0	15	0	8.4	
COLLIER	15	9	4	0	3	2	1	5	0	5.7	
COLUMBIA	7	0	0	0	0	0	0	6	1	0.0	
MIAMI-DADE	202	92	2	2	40	48	32	69	9	4.7	
DESOTO	5	4	4	0	0	0	0	1	0	24.8	
DIXIE	2	0	0	0	0	0	0	2	0	0.0	
DUVAL	97	10	0	1	1	8	0	81	6	5.9	
ESCAMBIA	27	2	2	0	0	0	0	24	1	6.8	
FLAGLER	4	0	0	0	0	0	0	4	0	0.0	
FRANKLIN	1	0	0	0	0	0	0	1	0	0.0	
GADSDEN	6	3	2	0	0	1	0	3	0	34.5	
GILCHRIST	2	0	0	0	0	0	0	1	1	0.0	
GLADES	2	1	1	0	0	0	0	1	0	41.7	
GULF	0	0	0	0	0	0	0	0	0	0.0	
HAMILTON	1	1	0	0	0	1	0	0	0	33.3	
HARDEE	0	0	0	0	0	0	0	0	0	0.0	
HENDRY	4	1	0	0	0	1	0	2	1	3.0	
HERNANDO	15	6	0	4	2	0	0	9	0	20.5	
HIGHLANDS	10	3	0	0	2	1	0	7	0	12.6	
HILLSBOROUGH	110	38	8	16	8	6	5	65	2	6.7	
HOLMES	0	0	0	0	0	0	0	0	0	0.0	
INDIAN RIVER	4	0	0	0	0	0	0	4	0	0.0	
JACKSON	6	0	0	0	0	0	0	6	0	0.0	
JEFFERSON	3	0	0	0	0	0	0	3	0	0.0	
LAFAYETTE	0	0	0	0	0	0	0	0	0	0.0	
LAKE	11	2	0	2	0	0	1	7	1	2.7	
LEE	42	7	2	3	1	1	4	27	4	2.7	
LEON	9	3	0	1	0	2	0	6	0	12.8	
LEVY	3	0	0	0	0	0	0	3	0	0.0	
LIBERTY	0	0	0	0	0	0	0	0	0	0.0	
MADISON	4	0	0	0	0	0	0	3	1	0.0	
MANATEE	24	5	2	1	2	0	3	16	0	4.7	
MARION	37	8	1	3	0	4	0	28	1	13.4	
MARTIN	4	2	1	0	0	1	0	2	0	4.9	
MONROE	5	0	0	0	0	0	0	2	3	0.0	
NASSAU	5	0	0	0	0	0	0	5	0	0.0	
OKALOOSA	16	3	1	2	0	0	0	13	0	7.7	
OKEECHOBEE	2	1	0	0	0	1	0	1	0	5.3	
ORANGE	124	37	4	17	2	14	16	54	17	5.9	
OSCEOLA	30	13	0	8	1	4	0	14	3	4.9	
PALM BEACH	97	29	3	4	5	17	18	47	3	6.2	
PASCO	29	5	1	4	0	0	0	22	2	4.9	
PINELLAS	55	10	3	2	2	3	0	45	0	9.1	
POLK	63	20	5	11	1	3	1	40	2	7.8	
PUTNAM	14	3	1	2	0	0	0	11	0	23.3	
SAINT JOHNS	10	1	0	0	0	1	0	9	0	6.3	
SAINT LUCIE	24	5	4	1	0	0	5	14	0	6.1	
SANTA ROSA	11	0	0	0	0	0	0	11	0	0.0	
SARASOTA	13	0	0	0	0	0	0	12	1	0.0	
SEMINOLE	39	8	2	5	0	1	2	26	3	7.0	
SUMTER	5	0	0	0	0	0	0	5	0	0.0	
SUWANNEE	4	1	1	0	0	0	0	3	0	16.9	
TAYLOR	0	0	0	0	0	0	0	0	0	0.0	
UNION	2	0	0	0	0	0	0	2	0	0.0	
VOLUSIA	33	7	1	4	0	2	0	26	0	7.4	
WAKULLA	4	0	0	0	0	0	0	4	0	0.0	
WALTON	9	2	1	0	0	1	0	7	0	18.3	
WASHINGTON	5	1	1	0	0	0	0	4	0	71.4	

TABLE F-3: RESIDENT FETAL DEATHS BY AGE OF MOTHER, BY COUNTY, FLORIDA, 2019

	TOTAL	AGE OF MOTHER													
		<13	13	14	15	16	17	18	19	20-24	25-29	30-34	35-44	45+	UNK
FLORIDA	1,515	0	0	3	4	7	9	25	43	280	380	374	366	5	19
ALACHUA	22	0	0	1	0	0	0	0	0	3	9	6	3	0	0
BAKER	3	0	0	0	1	1	0	0	0	0	1	0	0	0	0
BAY	13	0	0	0	0	0	0	1	0	0	5	4	3	0	0
BRADFORD	0	0	0	0	0	0	0	0	0	0	0	0	0	0	0
BREVARD	31	0	0	0	0	0	0	0	1	6	7	9	7	0	1
BROWARD	162	0	0	0	0	1	0	2	2	25	32	50	46	0	4
CALHOUN	0	0	0	0	0	0	0	0	0	0	0	0	0	0	0
CHARLOTTE	4	0	0	0	0	0	0	0	0	0	2	1	1	0	0
CITRUS	7	0	0	0	0	0	0	0	0	2	0	3	2	0	0
CLAY	17	0	0	0	0	0	0	2	1	2	3	5	4	0	0
COLLIER	15	0	0	0	0	0	0	2	0	1	6	3	3	0	0
COLUMBIA	7	0	0	0	0	0	0	0	0	3	3	1	0	0	0
MIAMI-DADE	202	0	0	0	0	0	2	3	3	28	46	41	67	4	8
DESOTO	5	0	0	0	0	0	0	0	0	1	0	2	2	0	0
DIXIE	2	0	0	0	0	0	0	0	0	0	1	1	0	0	0
DUVAL	97	0	0	1	0	1	0	3	4	18	26	21	21	0	2
ESCAMBIA	27	0	0	0	0	0	1	0	0	9	7	3	7	0	0
FLAGLER	4	0	0	0	0	0	0	0	0	0	1	1	2	0	0
FRANKLIN	1	0	0	0	0	0	0	0	0	1	0	0	0	0	0
GADSDEN	6	0	0	0	0	0	0	0	0	2	1	2	0	0	1
GILCHRIST	2	0	0	1	0	0	0	0	0	0	1	0	0	0	0
GLADES	2	0	0	0	0	0	0	0	0	0	1	0	1	0	0
GULF	0	0	0	0	0	0	0	0	0	0	0	0	0	0	0
HAMILTON	1	0	0	0	0	0	0	0	0	0	1	0	0	0	0
HARDEE	0	0	0	0	0	0	0	0	0	0	0	0	0	0	0
HENDRY	4	0	0	0	0	0	0	0	0	0	1	2	1	0	0
HERNANDO	15	0	0	0	0	0	0	1	0	1	8	3	2	0	0
HIGHLANDS	10	0	0	0	0	0	0	0	0	1	6	0	3	0	0
HILLSBOROUGH	110	0	0	0	1	1	1	0	4	19	35	30	19	0	0
HOLMES	0	0	0	0	0	0	0	0	0	0	0	0	0	0	0
INDIAN RIVER	4	0	0	0	0	0	0	0	0	0	2	1	1	0	0
JACKSON	6	0	0	0	0	0	0	1	0	0	2	1	2	0	0
JEFFERSON	3	0	0	0	0	0	0	0	0	0	2	1	0	0	0
LAFAYETTE	0	0	0	0	0	0	0	0	0	0	0	0	0	0	0
LAKE	11	0	0	0	0	0	0	0	0	1	6	1	2	0	1
LEE	42	0	0	0	0	1	1	0	2	12	7	13	6	0	0
LEON	9	0	0	0	0	0	0	0	0	4	1	4	0	0	0
LEVY	3	0	0	0	0	0	0	0	0	1	0	1	1	0	0
LIBERTY	0	0	0	0	0	0	0	0	0	0	0	0	0	0	0
MADISON	4	0	0	0	0	0	0	0	1	0	2	0	1	0	0
MANATEE	24	0	0	0	0	0	1	0	1	4	8	6	4	0	0
MARION	37	0	0	0	2	0	0	0	2	13	8	8	4	0	0
MARTIN	4	0	0	0	0	0	0	0	0	3	0	1	0	0	0
MONROE	5	0	0	0	0	0	0	0	0	1	1	1	2	0	0
NASSAU	5	0	0	0	0	0	0	0	0	0	1	3	1	0	0
OKALOOSA	16	0	0	0	0	0	0	0	0	4	1	5	6	0	0
OKEECHOBEE	2	0	0	0	0	0	0	0	0	0	0	1	1	0	0
ORANGE	124	0	0	0	0	0	1	1	4	28	28	27	34	1	0
OSCEOLA	30	0	0	0	0	0	1	0	2	7	6	9	4	0	1
PALM BEACH	97	0	0	0	0	1	0	3	3	15	19	29	26	0	1
PASCO	29	0	0	0	0	0	0	0	1	4	8	12	4	0	0
PINELLAS	55	0	0	0	0	0	0	1	3	13	14	12	12	0	0
POLK	63	0	0	0	0	0	0	0	4	16	9	14	20	0	0
PUTNAM	14	0	0	0	0	0	0	1	1	4	1	3	4	0	0
SAINT JOHNS	10	0	0	0	0	0	0	0	0	0	1	3	6	0	0
SAINT LUCIE	24	0	0	0	0	1	0	1	1	2	4	8	7	0	0
SANTA ROSA	11	0	0	0	0	0	0	0	0	2	7	1	1	0	0
SARASOTA	13	0	0	0	0	0	0	0	0	3	5	2	3	0	0
SEMINOLE	39	0	0	0	0	0	0	1	0	6	12	9	11	0	0
SUMTER	5	0	0	0	0	0	0	0	1	1	1	2	0	0	0
SUWANNEE	4	0	0	0	0	0	0	0	0	0	1	1	2	0	0
TAYLOR	0	0	0	0	0	0	0	0	0	0	0	0	0	0	0
UNION	2	0	0	0	0	0	0	0	0	0	0	1	1	0	0
VOLUSIA	33	0	0	0	0	0	0	1	2	8	11	6	5	0	0
WAKULLA	4	0	0	0	0	0	0	0	0	1	3	0	0	0	0
WALTON	9	0	0	0	0	0	1	0	0	3	4	0	1	0	0
WASHINGTON	5	0	0	0	0	0	0	1	0	2	2	0	0	0	0

TABLE F-4: RESIDENT AND RECORDED NEONATAL DEATHS (UNDER 28 DAYS) AND RATES PER 1,000 LIVE BIRTHS, BY RACE, BY COUNTY, FLORIDA, 2019

	RESIDENT NEONATAL DEATHS					RATES*		
	NUMBERS					TOTAL	WHITE	BLACK
	TOTAL	WHITE	BLACK	OTHER	UNK			
FLORIDA	924	479	358	76	11	4.2	3.1	7.4
ALACHUA	18	4	11	3	0	6.7	2.5	13.6
BAKER	1	1	0	0	0	2.8	3.3	0.0
BAY	12	9	1	2	0	6.0	6.4	3.2
BRADFORD	1	1	0	0	0	3.5	4.4	0.0
BREVARD	25	14	8	3	0	4.8	3.5	10.0
BROWARD	81	24	50	6	1	3.7	2.0	6.3
CALHOUN	1	1	0	0	0	8.5	10.0	0.0
CHARLOTTE	1	0	1	0	0	1.1	0.0	14.1
CITRUS	5	3	0	2	0	4.9	3.2	0.0
CLAY	10	7	1	1	1	4.5	4.0	3.1
COLLIER	9	4	1	4	0	2.9	1.6	2.7
COLUMBIA	11	6	4	1	0	14.3	10.5	24.5
MIAMI-DADE	97	59	34	3	1	3.2	2.5	6.2
DESOTO	1	1	0	0	0	2.5	3.1	0.0
DIXIE	0	0	0	0	0	0.0	0.0	0.0
DUVAL	71	24	44	2	1	5.4	3.4	9.4
ESCAMBIA	16	13	3	0	0	4.1	5.5	2.5
FLAGLER	2	1	1	0	0	2.4	1.5	8.7
FRANKLIN	1	0	0	1	0	9.8	0.0	0.0
GADSDEN	5	1	4	0	0	10.0	5.7	12.5
GILCHRIST	3	2	1	0	0	14.3	10.2	100.0
GLADES	1	1	0	0	0	18.5	24.4	0.0
GULF	0	0	0	0	0	0.0	0.0	0.0
HAMILTON	0	0	0	0	0	0.0	0.0	0.0
HARDEE	0	0	0	0	0	0.0	0.0	0.0
HENDRY	1	0	1	0	0	1.6	0.0	11.9
HERNANDO	6	3	3	0	0	3.8	2.2	29.1
HIGHLANDS	7	5	1	1	0	8.3	7.5	7.3
HILLSBOROUGH	89	47	33	9	0	5.2	4.0	8.8
HOLMES	1	1	0	0	0	4.9	5.6	0.0
INDIAN RIVER	5	1	4	0	0	4.0	1.1	18.9
JACKSON	6	4	2	0	0	12.7	12.2	17.1
JEFFERSON	0	0	0	0	0	0.0	0.0	0.0
LAFAYETTE	0	0	0	0	0	0.0	0.0	0.0
LAKE	19	14	4	1	0	5.5	5.3	7.7
LEE	33	22	8	2	1	4.8	3.9	7.6
LEON	11	1	7	3	0	3.7	0.6	5.5
LEVY	1	1	0	0	0	2.3	2.8	0.0
LIBERTY	0	0	0	0	0	0.0	0.0	0.0
MADISON	2	1	1	0	0	9.1	8.0	11.1
MANATEE	12	10	2	0	0	3.4	3.8	4.2
MARION	9	4	5	0	0	2.5	1.5	7.2
MARTIN	3	2	0	0	1	2.5	2.2	0.0
MONROE	1	1	0	0	0	1.5	1.9	0.0
NASSAU	4	4	0	0	0	4.7	5.3	0.0
OKALOOSA	8	6	2	0	0	3.0	2.8	6.5
OKEECHOBEE	2	1	1	0	0	4.0	2.2	38.5
ORANGE	75	35	29	8	3	4.5	3.2	7.0
OSCEOLA	17	12	5	0	0	3.8	3.3	9.9
PALM BEACH	54	20	27	6	1	3.7	2.1	6.3
PASCO	17	10	5	2	0	3.3	2.3	12.5
PINELLAS	26	12	10	4	0	3.3	2.1	6.8
POLK	42	27	13	2	0	5.1	4.5	7.8
PUTNAM	7	2	4	0	1	8.7	3.4	21.3
SAINT JOHNS	7	3	4	0	0	3.2	1.6	27.0
SAINT LUCIE	10	6	4	0	0	3.2	2.9	4.4
SANTA ROSA	9	8	1	0	0	4.6	4.7	9.0
SARASOTA	9	6	2	1	0	3.1	2.4	8.2
SEMINOLE	23	12	8	3	0	4.9	3.6	10.7
SUMTER	6	3	2	1	0	13.0	8.4	25.0
SUWANNEE	1	0	0	1	0	2.2	0.0	0.0
TAYLOR	2	0	2	0	0	8.4	0.0	32.3
UNION	2	2	0	0	0	13.1	15.6	0.0
VOLUSIA	18	10	4	4	0	3.7	2.7	4.9
WAKULLA	1	1	0	0	0	3.3	3.7	0.0
WALTON	2	2	0	0	0	2.3	2.6	0.0
WASHINGTON	4	4	0	0	0	13.8	16.1	0.0

*Rates based on neonatal deaths by race of decedent, live births by race of mother.

---- Indicates that no neonatal deaths nor live births occurred for the race group in the county, therefore a rate could not be calculated.

TABLE F-4 (Cont.): RESIDENT AND RECORDED NEONATAL DEATHS (UNDER 28 DAYS) AND RATES PER 1,000 LIVE BIRTHS, BY RACE, BY COUNTY, FLORIDA, 2019

	RECORDED NEONATAL DEATHS					RATES*		
	NUMBERS					TOTAL	WHITE	BLACK
	TOTAL	WHITE	BLACK	OTHER	UNK			
FLORIDA	950	495	366	78	11	4.3	3.2	7.6
ALACHUA	54	22	26	5	1	8.9	5.1	19.9
BAKER	0	0	0	0	0	0.0	0.0	----
BAY	21	15	3	3	0	8.5	8.4	7.9
BRADFORD	0	0	0	0	0	0.0	0.0	----
BREVARD	14	7	6	1	0	2.8	1.8	7.9
BROWARD	99	34	56	8	1	4.2	2.6	6.3
CALHOUN	0	0	0	0	0	----	----	----
CHARLOTTE	1	0	1	0	0	1.1	0.0	10.4
CITRUS	2	2	0	0	0	2.7	3.0	0.0
CLAY	7	1	4	1	1	2.8	0.6	6.6
COLLIER	4	1	1	2	0	1.2	0.4	2.7
COLUMBIA	4	2	0	2	0	7.0	5.1	0.0
MIAMI-DADE	99	63	32	4	0	3.6	2.8	7.3
DESOTO	0	0	0	0	0	0.0	0.0	----
DIXIE	0	0	0	0	0	0.0	0.0	----
DUVAL	81	37	42	1	1	5.4	4.1	9.3
ESCAMBIA	33	24	9	0	0	5.7	5.9	6.9
FLAGLER	0	0	0	0	0	0.0	0.0	0.0
FRANKLIN	0	0	0	0	0	0.0	0.0	----
GADSDEN	0	0	0	0	0	0.0	0.0	0.0
GILCHRIST	0	0	0	0	0	----	----	----
GLADES	0	0	0	0	0	----	----	----
GULF	0	0	0	0	0	0.0	0.0	----
HAMILTON	0	0	0	0	0	0.0	----	0.0
HARDEE	0	0	0	0	0	----	----	----
HENDRY	0	0	0	0	0	0.0	0.0	----
HERNANDO	4	2	2	0	0	2.2	1.2	18.0
HIGHLANDS	4	4	0	0	0	3.9	4.8	0.0
HILLSBOROUGH	111	60	38	13	0	5.7	4.4	9.2
HOLMES	0	0	0	0	0	0.0	0.0	----
INDIAN RIVER	1	1	0	0	0	1.0	1.3	0.0
JACKSON	0	0	0	0	0	0.0	0.0	0.0
JEFFERSON	0	0	0	0	0	0.0	----	0.0
LAFAYETTE	0	0	0	0	0	----	----	----
LAKE	5	1	3	1	0	2.0	0.5	6.7
LEE	35	24	8	2	1	5.0	4.2	7.5
LEON	18	5	10	3	0	4.0	2.0	5.4
LEVY	0	0	0	0	0	0.0	0.0	0.0
LIBERTY	0	0	0	0	0	----	----	----
MADISON	0	0	0	0	0	0.0	0.0	0.0
MANATEE	4	3	1	0	0	1.7	1.8	3.5
MARION	3	1	2	0	0	1.2	0.5	3.7
MARTIN	2	1	1	0	0	3.3	2.4	18.5
MONROE	1	1	0	0	0	2.3	2.9	0.0
NASSAU	1	1	0	0	0	2.7	3.2	0.0
OKALOOSA	2	1	1	0	0	1.0	0.6	4.3
OKEECHOBEE	0	0	0	0	0	0.0	0.0	----
ORANGE	171	99	49	20	3	7.7	6.5	10.2
OSCEOLA	4	3	1	0	0	0.9	0.8	1.8
PALM BEACH	59	21	31	5	2	3.4	1.9	6.5
PASCO	6	4	1	1	0	2.2	1.8	4.4
PINELLAS	37	19	14	4	0	4.2	2.9	9.2
POLK	20	11	8	1	0	3.2	2.4	6.3
PUTNAM	1	1	0	0	0	3.6	5.4	0.0
SAINT JOHN'S	5	2	3	0	0	3.2	1.6	16.0
SAINT LUCIE	11	6	5	0	0	3.2	2.5	5.7
SANTA ROSA	0	0	0	0	0	0.0	0.0	0.0
SARASOTA	9	8	1	0	0	2.2	2.3	2.3
SEMINOLE	8	3	4	0	1	2.3	1.2	6.1
SUMTER	0	0	0	0	0	0.0	0.0	----
SUWANNEE	0	0	0	0	0	0.0	0.0	----
TAYLOR	0	0	0	0	0	0.0	0.0	0.0
UNION	0	0	0	0	0	0.0	0.0	----
VOLUSIA	6	2	3	1	0	1.6	0.7	4.3
WAKULLA	0	0	0	0	0	0.0	0.0	----
WALTON	3	3	0	0	0	2.2	2.5	0.0
WASHINGTON	0	0	0	0	0	0.0	0.0	----

*Rates based on neonatal deaths by race of decedent, live births by race of mother.

---- Indicates that no neonatal deaths nor live births occurred for the race group in the county, therefore a rate could not be calculated.

TABLE F-5: RESIDENT AND RECORDED INFANT DEATHS (UNDER 1 YEAR) AND RATES PER 1,000 LIVE BIRTHS, BY RACE, BY COUNTY, FLORIDA, 2019

	RESIDENT INFANT DEATHS					RATES*		
	NUMBERS							
	TOTAL	WHITE	BLACK	OTHER	UNK	TOTAL	WHITE	BLACK
FLORIDA	1328	682	524	110	12	6.0	4.4	10.9
ALACHUA	27	11	11	5	0	10.0	7.0	13.6
BAKER	4	2	1	1	0	11.0	6.5	24.4
BAY	15	10	1	4	0	7.5	7.1	3.2
BRADFORD	2	2	0	0	0	7.0	8.9	0.0
BREVARD	29	16	10	3	0	5.6	4.0	12.5
BROWARD	114	29	72	12	1	5.2	2.4	9.1
CALHOUN	1	1	0	0	0	8.5	10.0	0.0
CHARLOTTE	5	1	3	1	0	5.3	1.2	42.3
CITRUS	8	6	0	2	0	7.8	6.5	0.0
CLAY	15	10	3	1	1	6.7	5.7	9.4
COLLIER	12	6	2	4	0	3.8	2.3	5.4
COLUMBIA	13	7	5	1	0	16.9	12.3	30.7
MIAMI-DADE	142	83	52	6	1	4.7	3.5	9.4
DESOTO	2	2	0	0	0	5.0	6.2	0.0
DIXIE	0	0	0	0	0	0.0	0.0	0.0
DUVAL	103	36	62	4	1	7.9	5.1	13.2
ESCAMBIA	31	18	10	3	0	8.0	7.6	8.4
FLAGLER	3	2	1	0	0	3.6	3.0	8.7
FRANKLIN	1	0	0	1	0	9.8	0.0	0.0
GADSDEN	5	1	4	0	0	10.0	5.7	12.5
GILCHRIST	3	2	1	0	0	14.3	10.2	100.0
GLADES	1	1	0	0	0	18.5	24.4	0.0
GULF	0	0	0	0	0	0.0	0.0	0.0
HAMILTON	0	0	0	0	0	0.0	0.0	0.0
HARDEE	3	2	1	0	0	8.9	6.5	55.6
HENDRY	2	1	1	0	0	3.3	1.9	11.9
HERNANDO	10	5	3	2	0	6.4	3.6	29.1
HIGHLANDS	7	5	1	1	0	8.3	7.5	7.3
HILLSBOROUGH	113	61	43	9	0	6.6	5.2	11.5
HOLMES	2	2	0	0	0	9.8	11.2	0.0
INDIAN RIVER	7	2	5	0	0	5.6	2.1	23.6
JACKSON	8	5	3	0	0	17.0	15.2	25.6
JEFFERSON	0	0	0	0	0	0.0	0.0	0.0
LAFAYETTE	0	0	0	0	0	0.0	0.0	0.0
LAKE	29	18	9	2	0	8.5	6.8	17.4
LEE	44	28	13	2	1	6.4	5.0	12.3
LEON	25	6	16	3	0	8.4	3.9	12.5
LEVY	2	2	0	0	0	4.6	5.5	0.0
LIBERTY	1	1	0	0	0	12.5	14.5	0.0
MADISON	3	1	2	0	0	13.7	8.0	22.2
MANATEE	18	12	6	0	0	5.2	4.6	12.5
MARION	24	15	8	1	0	6.8	5.5	11.5
MARTIN	6	4	0	0	2	5.0	4.3	0.0
MONROE	1	1	0	0	0	1.5	1.9	0.0
NASSAU	4	4	0	0	0	4.7	5.3	0.0
OKALOOSA	14	9	4	1	0	5.2	4.2	12.9
OKEECHOBEE	4	3	1	0	0	8.1	6.7	38.5
ORANGE	96	41	41	11	3	5.8	3.8	9.9
OSCEOLA	21	15	6	0	0	4.7	4.2	11.8
PALM BEACH	69	26	36	6	1	4.7	2.7	8.4
PASCO	26	15	8	3	0	5.1	3.5	20.0
PINELLAS	43	23	14	6	0	5.4	4.1	9.5
POLK	55	34	18	3	0	6.7	5.6	10.8
PUTNAM	10	2	7	0	1	12.4	3.4	37.2
SAINT JOHNS	10	5	5	0	0	4.5	2.7	33.8
SAINT LUCIE	19	10	9	0	0	6.1	4.9	9.8
SANTA ROSA	15	14	1	0	0	7.7	8.2	9.0
SARASOTA	13	10	2	1	0	4.5	4.1	8.2
SEMINOLE	32	16	13	3	0	6.9	4.8	17.4
SUMTER	8	4	3	1	0	17.4	11.2	37.5
SUWANNEE	2	1	0	1	0	4.5	2.7	0.0
TAYLOR	2	0	2	0	0	8.4	0.0	32.3
UNION	3	2	0	1	0	19.6	15.6	0.0
VOLUSIA	26	18	4	4	0	5.4	4.9	4.9
WAKULLA	4	4	0	0	0	13.0	14.7	0.0
WALTON	6	5	1	0	0	7.0	6.6	21.3
WASHINGTON	5	4	0	1	0	17.3	16.1	0.0

*Rates based on infant deaths by race of decedent, live births by race of mother.

---- Indicates that no neonatal deaths nor live births occurred for the race group in the county, therefore a rate could not be calculated.

TABLE F-5 (Cont.): RESIDENT AND RECORDED INFANT DEATHS (UNDER 1 YEAR) AND RATES PER 1,000 LIVE BIRTHS, BY RACE, BY COUNTY, FLORIDA, 2019

	RECORDED INFANT DEATHS NUMBERS					RATES*		
	TOTAL	WHITE	BLACK	OTHER	UNK	TOTAL	WHITE	BLACK
FLORIDA	1367	703	537	115	12	6.2	4.5	11.1
ALACHUA	81	42	31	7	1	13.4	9.7	23.7
BAKER	3	2	0	1	0	600.0	400.0	----
BAY	27	17	3	7	0	11.0	9.5	7.9
BRADFORD	1	0	1	0	0	333.3	0.0	----
BREVARD	17	9	7	1	0	3.4	2.3	9.2
BROWARD	136	43	77	15	1	5.8	3.3	8.7
CALHOUN	1	1	0	0	0	----	----	----
CHARLOTTE	2	0	2	0	0	2.2	0.0	20.8
CITRUS	4	4	0	0	0	5.4	5.9	0.0
CLAY	8	2	4	1	1	3.2	1.1	6.6
COLLIER	7	3	2	2	0	2.0	1.1	5.3
COLUMBIA	6	3	1	2	0	10.5	7.7	6.5
MIAMI-DADE	149	88	54	7	0	5.4	4.0	12.4
DESOTO	1	1	0	0	0	142.9	200.0	----
DIXIE	0	0	0	0	0	0.0	0.0	----
DUVAL	121	52	64	4	1	8.1	5.8	14.1
ESCAMBIA	54	33	18	3	0	9.3	8.2	13.9
FLAGLER	0	0	0	0	0	0.0	0.0	0.0
FRANKLIN	0	0	0	0	0	0.0	0.0	----
GADSDEN	0	0	0	0	0	0.0	0.0	0.0
GILCHRIST	0	0	0	0	0	----	----	----
GLADES	0	0	0	0	0	----	----	----
GULF	0	0	0	0	0	0.0	0.0	----
HAMILTON	0	0	0	0	0	0.0	----	0.0
HARDEE	1	1	0	0	0	----	----	----
HENDRY	1	1	0	0	0	166.7	200.0	----
HERNANDO	7	3	2	2	0	3.8	1.8	18.0
HIGHLANDS	4	4	0	0	0	3.9	4.8	0.0
HILLSBOROUGH	146	80	51	15	0	7.5	5.9	12.4
HOLMES	1	1	0	0	0	1,000.0	1,000.0	----
INDIAN RIVER	3	2	1	0	0	2.9	2.6	5.4
JACKSON	1	1	0	0	0	2.7	3.8	0.0
JEFFERSON	0	0	0	0	0	0.0	----	0.0
LAFAYETTE	0	0	0	0	0	----	----	----
LAKE	9	2	6	1	0	3.5	1.1	13.4
LEE	43	27	13	2	1	6.1	4.7	12.2
LEON	29	9	17	3	0	6.4	3.6	9.1
LEVY	0	0	0	0	0	0.0	0.0	0.0
LIBERTY	0	0	0	0	0	----	----	----
MADISON	1	0	1	0	0	142.9	0.0	500.0
MANATEE	8	5	3	0	0	3.5	2.9	10.6
MARION	9	6	3	0	0	3.5	3.1	5.5
MARTIN	3	2	1	0	0	5.0	4.9	18.5
MONROE	1	1	0	0	0	2.3	2.9	0.0
NASSAU	1	1	0	0	0	2.7	3.2	0.0
OKALOOSA	7	3	3	1	0	3.4	1.9	12.8
OKEECHOBEE	1	1	0	0	0	200.0	250.0	----
ORANGE	210	116	68	23	3	9.5	7.6	14.1
OSCEOLA	9	6	3	0	0	1.9	1.6	5.3
PALM BEACH	72	26	39	5	2	4.2	2.3	8.2
PASCO	12	7	4	1	0	4.4	3.2	17.7
PINELLAS	60	32	21	7	0	6.7	4.9	13.7
POLK	28	16	10	2	0	4.4	3.4	7.9
PUTNAM	4	2	2	0	0	14.4	10.8	23.8
SAINT JOHNS	5	2	3	0	0	3.2	1.6	16.0
SAINT LUCIE	19	9	9	0	1	5.6	3.8	10.2
SANTA ROSA	2	2	0	0	0	5.0	6.1	0.0
SARASOTA	10	9	1	0	0	2.4	2.6	2.3
SEMINOLE	16	8	7	0	1	4.6	3.3	10.6
SUMTER	2	1	1	0	0	2,000.0	1,000.0	----
SUWANNEE	1	1	0	0	0	55.6	62.5	----
TAYLOR	0	0	0	0	0	0.0	0.0	0.0
UNION	1	0	0	1	0	250.0	0.0	----
VOLUSIA	12	8	3	1	0	3.1	2.7	4.3
WAKULLA	2	2	0	0	0	400.0	500.0	----
WALTON	7	6	1	0	0	5.1	4.9	9.9
WASHINGTON	1	0	0	1	0	500.0	0.0	----

*Rates based on infant deaths by race of decedent, live births by race of mother.

---- Indicates that no neonatal deaths nor live births occurred for the race group in the county, therefore a rate could not be calculated.

TABLE F-6: RESIDENT INFANT DEATHS AND RATE PER 1,000 LIVE BIRTHS BY HISPANIC OR HAITIAN ORIGIN, BY COUNTY, FLORIDA, 2019

	NUMBERS									RATE
	HISPANIC ORIGIN									
	TOTAL	PUERTO RICAN			OTHER/UNK		NON-HISPANIC/ NON-HAITIAN		TOTAL HISPANIC	
	TOTAL HISPANIC	MEXICAN	RICAN	CUBAN	HISPANIC	HAITIAN		UNK		
FLORIDA	1,328	332	41	87	55	149	82	873	41	4.9
ALACHUA	27	2	0	0	0	2	0	25	0	7.2
BAKER	4	0	0	0	0	0	0	4	0	0.0
BAY	15	1	0	0	0	1	0	14	0	5.0
BRADFORD	2	0	0	0	0	0	0	2	0	0.0
BREVARD	29	6	0	3	1	2	2	20	1	8.3
BROWARD	114	20	0	4	2	14	24	66	4	2.8
CALHOUN	1	0	0	0	0	0	0	1	0	0.0
CHARLOTTE	5	1	0	0	0	1	1	3	0	8.8
CITRUS	8	1	0	0	0	1	0	7	0	11.9
CLAY	15	0	0	0	0	0	0	14	1	0.0
COLLIER	12	3	0	0	0	3	2	7	0	1.9
COLUMBIA	13	0	0	0	0	0	0	13	0	0.0
MIAMI-DADE	142	82	3	7	30	42	16	38	6	4.2
DESOTO	2	1	1	0	0	0	0	1	0	6.4
DIXIE	0	0	0	0	0	0	0	0	0	0.0
DUVAL	103	14	2	4	0	8	1	83	5	8.3
ESCAMBIA	31	0	0	0	0	0	0	31	0	0.0
FLAGLER	3	1	1	0	0	0	0	2	0	9.3
FRANKLIN	1	0	0	0	0	0	0	1	0	0.0
GADSDEN	5	0	0	0	0	0	0	5	0	0.0
GILCHRIST	3	0	0	0	0	0	0	3	0	0.0
GLADES	1	0	0	0	0	0	0	1	0	0.0
GULF	0	0	0	0	0	0	0	0	0	0.0
HAMILTON	0	0	0	0	0	0	0	0	0	0.0
HARDEE	3	2	2	0	0	0	0	1	0	10.4
HENDRY	2	0	0	0	0	0	0	2	0	0.0
HERNANDO	10	2	0	0	1	1	0	8	0	7.0
HIGHLANDS	7	1	0	1	0	0	0	5	1	4.2
HILLSBOROUGH	113	44	12	9	12	11	2	67	0	7.8
HOLMES	2	0	0	0	0	0	0	2	0	0.0
INDIAN RIVER	7	0	0	0	0	0	1	6	0	0.0
JACKSON	8	1	0	1	0	0	0	7	0	38.5
JEFFERSON	0	0	0	0	0	0	0	0	0	0.0
LAFAYETTE	0	0	0	0	0	0	0	0	0	0.0
LAKE	29	8	2	3	0	3	1	19	1	11.0
LEE	44	12	4	3	0	5	2	28	2	4.6
LEON	25	1	0	0	0	1	1	23	0	4.3
LEVY	2	0	0	0	0	0	0	2	0	0.0
LIBERTY	1	0	0	0	0	0	0	1	0	0.0
MADISON	3	0	0	0	0	0	0	3	0	0.0
MANATEE	18	6	2	3	0	1	1	10	1	5.7
MARION	24	7	2	3	1	1	0	16	1	11.9
MARTIN	6	1	0	0	0	1	1	3	1	2.5
MONROE	1	1	0	0	0	1	0	0	0	4.9
NASSAU	4	0	0	0	0	0	0	4	0	0.0
OKALOOSA	14	2	1	0	0	1	0	12	0	5.2
ORKEECHOBEE	4	2	2	0	0	0	0	2	0	10.6
ORANGE	96	24	1	9	2	12	10	53	9	3.9
OSCEOLA	21	13	0	7	0	6	1	6	1	4.9
PALM BEACH	69	19	1	2	1	15	10	37	3	4.1
PASCO	26	7	0	5	1	1	2	17	0	6.9
PINELLAS	43	7	1	2	0	4	0	36	0	6.4
POLK	55	20	1	12	2	5	3	32	0	7.9
PUTNAM	10	0	0	0	0	0	0	9	1	0.0
SAINT JOHNS	10	0	0	0	0	0	0	10	0	0.0
SAINT LUCIE	19	4	1	0	0	3	0	15	0	4.9
SANTA ROSA	15	0	0	0	0	0	0	15	0	0.0
SARASOTA	13	4	1	0	2	1	0	9	0	10.8
SEMINOLE	32	8	0	6	0	2	1	20	3	7.0
SUMTER	8	2	0	2	0	0	0	6	0	31.3
SUWANNEE	2	0	0	0	0	0	0	2	0	0.0
TAYLOR	2	0	0	0	0	0	0	2	0	0.0
UNION	3	0	0	0	0	0	0	3	0	0.0
VOLUSIA	26	1	0	1	0	0	0	25	0	1.1
WAKULLA	4	1	1	0	0	0	0	3	0	83.3
WALTON	6	0	0	0	0	0	0	6	0	0.0
WASHINGTON	5	0	0	0	0	0	0	5	0	0.0

**TABLE F-7: RESIDENT INFANT, NEONATAL AND POST-NEONATAL DEATHS FROM SELECTED CAUSES
BY RACE, FLORIDA, 2019**

	TOTAL			POST NEO- NATAL	WHITE			POST NEO- NATAL
	NEONATAL		INFANT		NEONATAL		INFANT	
	<1 DAY	1-27 DAYS			<1 DAY	1-27 DAYS		
TOTAL	1,328	478	446	404	682	235	244	203
Intestinal Infectious Disease	1	0	1	0	1	0	1	0
Diarrhea & Gastroenteritis--Infectious Origin	15	0	0	15	4	0	0	4
Tuberculosis	0	0	0	0	0	0	0	0
Tetanus	0	0	0	0	0	0	0	0
Diphtheria	0	0	0	0	0	0	0	0
Whooping Cough	0	0	0	0	0	0	0	0
Meningococcal Infection	0	0	0	0	0	0	0	0
Septicemia	11	0	0	11	2	0	0	2
Congenital Syphilis	0	0	0	0	0	0	0	0
Gonococcal Infection	0	0	0	0	0	0	0	0
Acute Poliomyelitis	0	0	0	0	0	0	0	0
Varicella (Chicken Pox)	0	0	0	0	0	0	0	0
Measles	0	0	0	0	0	0	0	0
HIV Disease	0	0	0	0	0	0	0	0
Mumps	0	0	0	0	0	0	0	0
Other & Unspec Viral Diseases	5	0	1	4	4	0	1	3
Candidiasis	0	0	0	0	0	0	0	0
Malaria	0	0	0	0	0	0	0	0
Pneumocystosis	0	0	0	0	0	0	0	0
Other & Unspecified Infectious & Parasitic Diseases	3	0	1	2	1	0	0	1
Hodgkins Disease & Non-Hodgkins Lymphomas	0	0	0	0	0	0	0	0
Leukemia	0	0	0	0	0	0	0	0
Other & Unspecified Malignant Neoplasm	1	0	0	1	1	0	0	1
In Situ/Benign/Malignant Neoplasms Uncert/Unk Behavior	4	0	1	3	2	0	1	1
Anemias	1	0	0	1	0	0	0	0
Blood, Blood-Forming, Hemorrhagic Diseases	7	0	5	2	2	0	2	0
Disorders Involving Immune Mechanism	0	0	0	0	0	0	0	0
Short Stature	1	1	0	0	0	0	0	0
Nutritional Deficiencies	1	0	0	1	1	0	0	1
Cystic Fibrosis	0	0	0	0	0	0	0	0
Fluid/Electrolyte/Acid-Base/Volume Depletion Disorders	5	0	1	4	1	0	0	1
Other Endocrine, Nutritional, Metabolic Diseases	5	0	1	4	1	0	0	1
Meningitis	1	0	1	0	0	0	0	0
Infantile Spinal Muscular Atrophy, Type 1 (Werdnig-Hoffman)	0	0	0	0	0	0	0	0
Infantile Cerebral Palsy	1	0	0	1	0	0	0	0
Anoxic Brain Damage	1	0	0	1	0	0	0	0
Other Nervous System Diseases	9	0	3	6	6	0	2	4
Ear & Mastoid Process Diseases	1	0	0	1	1	0	0	1
Pulmonary Heart/Circulation Diseases	7	0	1	6	3	0	1	2
Pericarditis, Endocarditis, Myocarditis	0	0	0	0	0	0	0	0
Cardiomyopathy	5	1	1	3	3	0	0	3
Cardiac Arrest	1	0	0	1	1	0	0	1
Cerebrovascular Diseases	6	0	1	5	3	0	1	2
Other Circulatory System Diseases	11	1	1	9	3	0	1	2
Acute Upper Respiratory Infections	0	0	0	0	0	0	0	0
Influenza	2	0	0	2	2	0	0	2
Pneumonia	9	0	0	9	3	0	0	3

TABLE F-7 (Cont.): RESIDENT INFANT, NEONATAL AND POST-NEONATAL DEATHS FROM SELECTED CAUSES, BY RACE, FLORIDA, 2019

	TOTAL			POST NEO- NATAL	WHITE			POST NEO- NATAL
	NEONATAL		INFANT		NEONATAL		INFANT	
	<1 DAY	1-27 DAYS			<1 DAY	1-27 DAYS		
Acute Bronchitis & Acute Bronchiolitis	2	0	0	2	0	0	0	0
Bronchitis, Chronic & Unspecified	0	0	0	0	0	0	0	0
Asthma	0	0	0	0	0	0	0	0
Pneumonitis Due to Solids & Liquids	1	0	0	1	0	0	0	0
Other & Unspecified Respiratory System Diseases	11	0	1	10	4	0	0	4
Gastritis, Duodenitis, Noninfective Enteritis/Colitis	3	0	2	1	3	0	2	1
Hernia Abdom Cavity & Intestinal Obstruct W/O Hernia	1	0	0	1	1	0	0	1
Other & Unspec Digestive System Disease	5	2	1	2	3	0	1	2
Renal Failure & Other Kidney Disorders	3	0	2	1	1	0	0	1
Other & Unspec Genitourinary System Dis	0	0	0	0	0	0	0	0
PERINATAL PERIOD CONDITIONS	704	377	302	25	336	166	157	13
Maternal Hypertensive Disorders	5	3	2	0	3	2	1	0
Maternal Conditions Unrelated Present Pregnancy	4	2	2	0	3	2	1	0
Incompetent Cervix	35	30	5	0	12	12	0	0
Premature Rupture of Membranes	49	41	8	0	25	21	4	0
Multiple Pregnancy	0	0	0	0	0	0	0	0
Maternal Complications of Pregnancy	12	12	0	0	6	6	0	0
Placenta Complications	18	13	5	0	5	4	1	0
Cord Complications	2	1	1	0	2	1	1	0
Chorioamnionitis	31	28	3	0	13	12	1	0
Other & Unspecified Membrane Abnormalities	0	0	0	0	0	0	0	0
Other Complications of Labor & Delivery	14	12	2	0	9	7	2	0
Noxious Influences Via Placenta or Breast Milk	1	1	0	0	0	0	0	0
Slow Fetal Growth & Fetal Malnutrition	15	5	8	2	6	0	4	2
Extreme Low Birth Weight or Extreme Immaturity	160	133	24	3	66	52	13	1
Other Low Birth Weight or Preterm	46	40	6	0	17	14	3	0
Long Gestation & High Birth Weight	0	0	0	0	0	0	0	0
Birth Trauma	0	0	0	0	0	0	0	0
Intrauterine Hypoxia	15	4	11	0	9	3	6	0
Birth Asphyxia	5	1	4	0	2	1	1	0
Respiratory Distress	33	4	25	4	15	3	10	2
Congenital Pneumonia	5	0	5	0	1	0	1	0
Neonatal Aspiration Syndromes	4	2	1	1	2	1	0	1
Interstitial Emphysema & Related Conditions	4	2	1	1	4	2	1	1
Pulmonary Hemorrhage	7	0	7	0	1	0	1	0
Chronic Respiratory Disease	5	0	0	5	3	0	0	3
Atelectasis	15	6	7	2	8	3	5	0
Other Respiratory Conditions	5	1	4	0	3	1	2	0
Bacterial Sepsis	51	5	45	1	29	3	25	1
Omphalitis With or Without Hemorrhage	0	0	0	0	0	0	0	0
All Other Infections	14	3	11	0	8	2	6	0
Neonatal Hemorrhage	29	3	26	0	18	2	16	0
Hemorrhagic Disease of Newborn	0	0	0	0	0	0	0	0
Hemolytic Dis Due to Isoimmunization/Perinat Jaundice	2	0	2	0	1	0	1	0
Hematological Disorders	3	0	2	1	1	0	0	1
Diabetes Mellitus, Maternal or Neonatal	0	0	0	0	0	0	0	0
Necrotizing Enterocolitis	25	0	25	0	12	0	12	0
Hydrops Fetalis Not Due To Hemolytic Dis	10	5	4	1	7	4	3	0

TABLE F-7 (Cont.): RESIDENT INFANT, NEONATAL AND POST-NEONATAL DEATHS FROM SELECTED CAUSES, BY RACE, FLORIDA, 2019

	TOTAL			POST NEO- NATAL	WHITE			POST NEO- NATAL
	NEONATAL		INFANT		NEONATAL		INFANT	
	<1 DAY	1-27 DAYS			<1 DAY	1-27 DAYS		
Other Perinatal Conditions	80	20	56	4	45	8	36	1
CONGENITAL / CHROMOSOMAL ANOMALIES	250	91	91	68	170	68	59	43
Anencephaly & Similar Anomalies	23	17	5	1	18	13	4	1
Congenital Hydrocephalus	2	0	0	2	2	0	0	2
Spina Bifida	0	0	0	0	0	0	0	0
Other Cong Malf Nervous System	14	3	6	5	13	3	5	5
Congenital Malf of Heart	65	7	30	28	40	4	21	15
Other Congenital Malf of Circulatory Sys	4	0	1	3	2	0	1	1
Congenital Malf of Respiratory Sys	9	5	2	2	4	3	1	0
Congenital Anomalies of Digestive Sys	4	0	1	3	3	0	1	2
Congenital Malf of Genitourinary Sys	29	19	9	1	23	17	5	1
Congenital Malf of Musculoskeletal Sys	30	15	12	3	22	13	6	3
Downs Syndrome	3	1	0	2	2	0	0	2
Edwards Syndrome	26	10	7	9	16	7	4	5
Pataus Syndrome	15	2	11	2	8	1	7	0
Other Congenital Malf	21	11	4	6	13	6	2	5
Other Chromosomal Abnorm	5	1	3	1	4	1	2	1
Sudden Infant Death Syndrome	60	1	6	53	26	0	4	22
Symptoms, Signs, Abn Clinical/Lab Findings	61	2	6	53	37	1	4	32
All Other Diseases	2	1	0	1	0	0	0	0
Unint Inj: Motor Vehicle	8	0	1	7	5	0	1	4
Unint Inj: Other & Unspecified Transport	0	0	0	0	0	0	0	0
Unint Inj: Falls	0	0	0	0	0	0	0	0
Unint Inj: Firearms Discharge	2	1	1	0	1	0	1	0
Unint Inj: Drowning & Submersion	3	0	0	3	2	0	0	2
Unint Inj: Suffocation & Strangulation in Bed	67	0	11	56	27	0	4	23
Unint Inj: Other Suffocation & Strangulation	5	0	0	5	5	0	0	5
Unint Inj: Inhale/Ingest--Respiratory Tract Obstruction	1	0	0	1	0	0	0	0
Unint Inj: Smoke, Fire, Flames Exposure	0	0	0	0	0	0	0	0
Unint Inj: Poisoning & Noxious Substance Exposure	1	0	0	1	1	0	0	1
Unint Inj: Other & Unspecified	2	0	1	1	0	0	0	0
Homicide: Hanging, Strangulation, Suffocation	1	0	0	1	0	0	0	0
Homicide: Firearms Discharge	0	0	0	0	0	0	0	0
Homicide: Neglect, Abandonment, Maltreatment	3	0	1	2	3	0	1	2
Homicide: Other & Unspecified Means	10	0	0	10	7	0	0	7
Medical & Surgical Care Complications	3	0	1	2	1	0	0	1
Other External Causes	5	0	0	5	4	0	0	4

ICD-10 codes associated with each cause of death group are presented in Appendix 2.

TABLE F-7 (Cont.): RESIDENT INFANT, NEONATAL AND POST-NEONATAL DEATHS FROM SELECTED CAUSES, BY RACE, FLORIDA, 2019

	BLACK			POST NEO- NATAL	OTHER			POST NEO- NATAL
	NEONATAL		INFANT		NEONATAL		INFANT	
	<1 DAY	1-27 DAYS			<1 DAY	1-27 DAYS		
TOTAL	524	208	150	166	110	30	46	34
Intestinal Infectious Disease	0	0	0	0	0	0	0	0
Diarrhea & Gastroenteritis--Infectious Origin	9	0	0	9	2	0	0	2
Tuberculosis	0	0	0	0	0	0	0	0
Tetanus	0	0	0	0	0	0	0	0
Diphtheria	0	0	0	0	0	0	0	0
Whooping Cough	0	0	0	0	0	0	0	0
Meningococcal Infection	0	0	0	0	0	0	0	0
Septicemia	9	0	0	9	0	0	0	0
Congenital Syphilis	0	0	0	0	0	0	0	0
Gonococcal Infection	0	0	0	0	0	0	0	0
Acute Poliomyelitis	0	0	0	0	0	0	0	0
Varicella (Chicken Pox)	0	0	0	0	0	0	0	0
Measles	0	0	0	0	0	0	0	0
HIV Disease	0	0	0	0	0	0	0	0
Mumps	0	0	0	0	0	0	0	0
Other & Unspec Viral Diseases	1	0	0	1	0	0	0	0
Candidiasis	0	0	0	0	0	0	0	0
Malaria	0	0	0	0	0	0	0	0
Pneumocystosis	0	0	0	0	0	0	0	0
Other & Unspecified Infectious & Parasitic Diseases	2	0	1	1	0	0	0	0
Hodgkins Disease & Non-Hodgkins Lymphomas	0	0	0	0	0	0	0	0
Leukemia	0	0	0	0	0	0	0	0
Other & Unspecified Malignant Neoplasm	0	0	0	0	0	0	0	0
In Situ/Benign/Malignant Neoplasms Uncert/Unk Behavior	2	0	0	2	0	0	0	0
Anemias	1	0	0	1	0	0	0	0
Blood, Blood-Forming, Hemorrhagic Diseases	1	0	1	0	4	0	2	2
Disorders Involving Immune Mechanism	0	0	0	0	0	0	0	0
Short Stature	0	0	0	0	0	0	0	0
Nutritional Deficiencies	0	0	0	0	0	0	0	0
Cystic Fibrosis	0	0	0	0	0	0	0	0
Fluid/Electrolyte/Acid-Base/Volume Depletion Disorders	4	0	1	3	0	0	0	0
Other Endocrine, Nutritional, Metabolic Diseases	3	0	1	2	1	0	0	1
Meningitis	0	0	0	0	1	0	1	0
Infantile Spinal Muscular Atrophy, Type 1 (Werdnig-Hoffman)	0	0	0	0	0	0	0	0
Infantile Cerebral Palsy	1	0	0	1	0	0	0	0
Anoxic Brain Damage	1	0	0	1	0	0	0	0
Other Nervous System Diseases	2	0	1	1	1	0	0	1
Ear & Mastoid Process Diseases	0	0	0	0	0	0	0	0
Pulmonary Heart/Circulation Diseases	4	0	0	4	0	0	0	0
Pericarditis, Endocarditis, Myocarditis	0	0	0	0	0	0	0	0
Cardiomyopathy	2	1	1	0	0	0	0	0
Cardiac Arrest	0	0	0	0	0	0	0	0
Cerebrovascular Diseases	2	0	0	2	1	0	0	1
Other Circulatory System Diseases	8	1	0	7	0	0	0	0
Acute Upper Respiratory Infections	0	0	0	0	0	0	0	0
Influenza	0	0	0	0	0	0	0	0

TABLE F-7 (Cont.): RESIDENT INFANT, NEONATAL AND POST-NEONATAL DEATHS FROM SELECTED CAUSES, BY RACE, FLORIDA, 2019

	BLACK			POST NEO- NATAL	OTHER			POST NEO- NATAL
	NEONATAL		INFANT		NEONATAL		INFANT	
	<1 DAY	1-27 DAYS			<1 DAY	1-27 DAYS		
Pneumonia	4	0	0	4	2	0	0	2
Acute Bronchitis & Acute Bronchiolitis	2	0	0	2	0	0	0	0
Bronchitis, Chronic & Unspecified	0	0	0	0	0	0	0	0
Asthma	0	0	0	0	0	0	0	0
Pneumonitis Due to Solids & Liquids	1	0	0	1	0	0	0	0
Other & Unspecified Respiratory System Diseases	7	0	1	6	0	0	0	0
Gastritis, Duodenitis, Noninfective Enteritis/Colitis	0	0	0	0	0	0	0	0
Hernia Abdom Cavity & Intestinal Obstruct W/O Hernia	0	0	0	0	0	0	0	0
Other & Unspec Digestive System Disease	2	2	0	0	0	0	0	0
Renal Failure & Other Kidney Disorders	2	0	2	0	0	0	0	0
Other & Unspec Genitourinary System Dis	0	0	0	0	0	0	0	0
PERINATAL PERIOD CONDITIONS	302	184	106	12	60	24	36	0
Maternal Hypertensive Disorders	2	1	1	0	0	0	0	0
Maternal Conditions Unrelated Present Pregnancy	1	0	1	0	0	0	0	0
Incompetent Cervix	19	17	2	0	4	1	3	0
Premature Rupture of Membranes	20	18	2	0	4	2	2	0
Multiple Pregnancy	0	0	0	0	0	0	0	0
Maternal Complications of Pregnancy	6	6	0	0	0	0	0	0
Placenta Complications	8	7	1	0	5	2	3	0
Cord Complications	0	0	0	0	0	0	0	0
Chorioamnionitis	14	12	2	0	3	3	0	0
Other & Unspecified Membrane Abnormalities	0	0	0	0	0	0	0	0
Other Complications of Labor & Delivery	4	4	0	0	1	1	0	0
Noxious Influences Via Placenta or Breast Milk	1	1	0	0	0	0	0	0
Slow Fetal Growth & Fetal Malnutrition	8	5	3	0	1	0	1	0
Extreme Low Birth Weight or Extreme Immaturity	81	70	9	2	12	10	2	0
Other Low Birth Weight or Preterm	24	21	3	0	4	4	0	0
Long Gestation & High Birth Weight	0	0	0	0	0	0	0	0
Birth Trauma	0	0	0	0	0	0	0	0
Intrauterine Hypoxia	4	1	3	0	2	0	2	0
Birth Asphyxia	2	0	2	0	1	0	1	0
Respiratory Distress	13	1	10	2	5	0	5	0
Congenital Pneumonia	4	0	4	0	0	0	0	0
Neonatal Aspiration Syndromes	2	1	1	0	0	0	0	0
Interstitial Emphysema & Related Conditions	0	0	0	0	0	0	0	0
Pulmonary Hemorrhage	4	0	4	0	2	0	2	0
Chronic Respiratory Disease	2	0	0	2	0	0	0	0
Atelectasis	7	3	2	2	0	0	0	0
Other Respiratory Conditions	1	0	1	0	1	0	1	0
Bacterial Sepsis	17	2	15	0	5	0	5	0
Omphalitis With or Without Hemorrhage	0	0	0	0	0	0	0	0
All Other Infections	5	1	4	0	1	0	1	0
Neonatal Hemorrhage	7	1	6	0	2	0	2	0
Hemorrhagic Disease of Newborn	0	0	0	0	0	0	0	0
Hemolytic Dis Due to Isoimmunization/Perinat Jaundice	1	0	1	0	0	0	0	0
Hematological Disorders	2	0	2	0	0	0	0	0
Diabetes Mellitus, Maternal or Neonatal	0	0	0	0	0	0	0	0
Necrotizing Enterocolitis	9	0	9	0	3	0	3	0

TABLE F-7 (Cont.): RESIDENT INFANT, NEONATAL AND POST-NEONATAL DEATHS FROM SELECTED CAUSES, BY RACE, FLORIDA, 2019

	BLACK			POST NEO- NATAL	OTHER			POST NEO- NATAL
	NEONATAL		INFANT		NEONATAL		INFANT	
	<1 DAY	1-27 DAYS			<1 DAY	1-27 DAYS		
Hydrops Fetalis Not Due To Hemolytic Dis	3	1	1	1	0	0	0	0
Other Perinatal Conditions	31	11	17	3	4	1	3	0
CONGENITAL / CHROMOSOMAL ANOMALIES	64	16	26	22	13	6	4	3
Anencephaly & Similar Anomalies	4	4	0	0	1	0	1	0
Congenital Hydrocephalus	0	0	0	0	0	0	0	0
Spina Bifida	0	0	0	0	0	0	0	0
Other Cong Malf Nervous System	1	0	1	0	0	0	0	0
Congenital Malf of Heart	23	3	8	12	2	0	1	1
Other Congenital Malf of Circulatory Sys	2	0	0	2	0	0	0	0
Congenital Malf of Respiratory Sys	2	1	0	1	3	1	1	1
Congenital Anomalies of Digestive Sys	0	0	0	0	1	0	0	1
Congenital Malf of Genitourinary Sys	4	1	3	0	2	1	1	0
Congenital Malf of Musculoskeletal Sys	6	1	5	0	1	1	0	0
Downs Syndrome	1	1	0	0	0	0	0	0
Edwards Syndrome	9	2	3	4	1	1	0	0
Patau Syndrome	5	0	3	2	1	1	0	0
Other Congenital Malf	6	3	2	1	1	1	0	0
Other Chromosomal Abnorm	1	0	1	0	0	0	0	0
Sudden Infant Death Syndrome	28	1	2	25	6	0	0	6
Symptoms, Signs, Abn Clinical/Lab Findings	17	1	1	15	6	0	1	5
All Other Diseases	2	1	0	1	0	0	0	0
Unint Inj: Motor Vehicle	3	0	0	3	0	0	0	0
Unint Inj: Other & Unspecified Transport	0	0	0	0	0	0	0	0
Unint Inj: Falls	0	0	0	0	0	0	0	0
Unint Inj: Firearms Discharge	1	1	0	0	0	0	0	0
Unint Inj: Drowning & Submersion	1	0	0	1	0	0	0	0
Unint Inj: Suffocation & Strangulation in Bed	28	0	4	24	11	0	2	9
Unint Inj: Other Suffocation & Strangulation	0	0	0	0	0	0	0	0
Unint Inj: Inhale/Ingest--Respiratory Tract Obstruction	1	0	0	1	0	0	0	0
Unint Inj: Smoke, Fire, Flames Exposure	0	0	0	0	0	0	0	0
Unint Inj: Poisoning & Noxious Substance Exposure	0	0	0	0	0	0	0	0
Unint Inj: Other & Unspecified	2	0	1	1	0	0	0	0
Homicide: Hanging, Strangulation, Suffocation	0	0	0	0	1	0	0	1
Homicide: Firearms Discharge	0	0	0	0	0	0	0	0
Homicide: Neglect, Abandonment, Maltreatment	0	0	0	0	0	0	0	0
Homicide: Other & Unspecified Means	2	0	0	2	1	0	0	1
Medical & Surgical Care Complications	2	0	1	1	0	0	0	0
Other External Causes	1	0	0	1	0	0	0	0

ICD-10 codes associated with each cause of death group are presented in Appendix 2.

